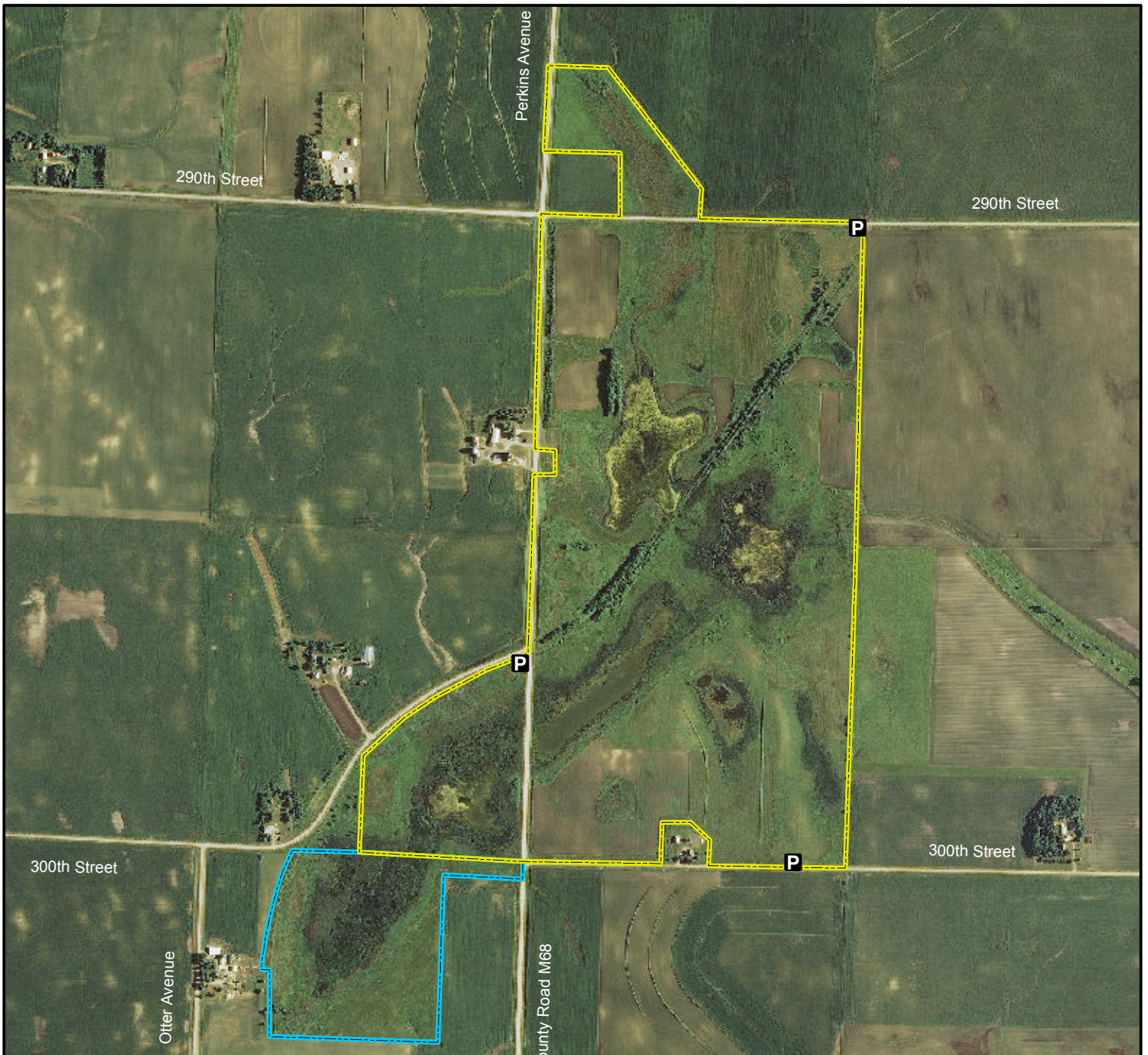




Tomahawk Marsh Wildlife Management Area



Legend

State Areas open to hunting

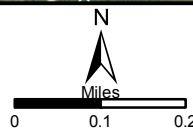
 WMA Boundary

 WPA Boundary

 Parking Lot

2013 Aerial Photography

Map Creation Date: 8/2014



Acres: 428

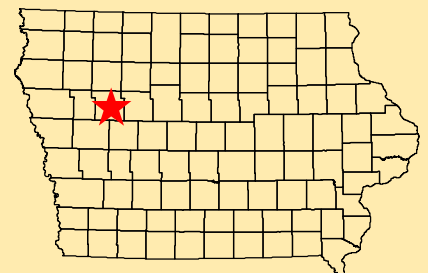
Habitat: 1/2 Marsh, 1/2 Upland

Species: Pheasant, Waterfowl, Dove

Contact: Clint Maddix
Blackhawk Wildlife Unit
712-657-2639

Restrictions: Non-Toxic Shot

Sac County, Iowa
T-87N, R-36W, Sections 4,8-9,17



Directions: 2 miles W of Sac City
on Hwy 20,
4 miles S on M68.

Every effort has been made to accurately depict the boundaries on this map. However, users should rely on boundary signs actually located in this area to ensure they do not trespass on private property.