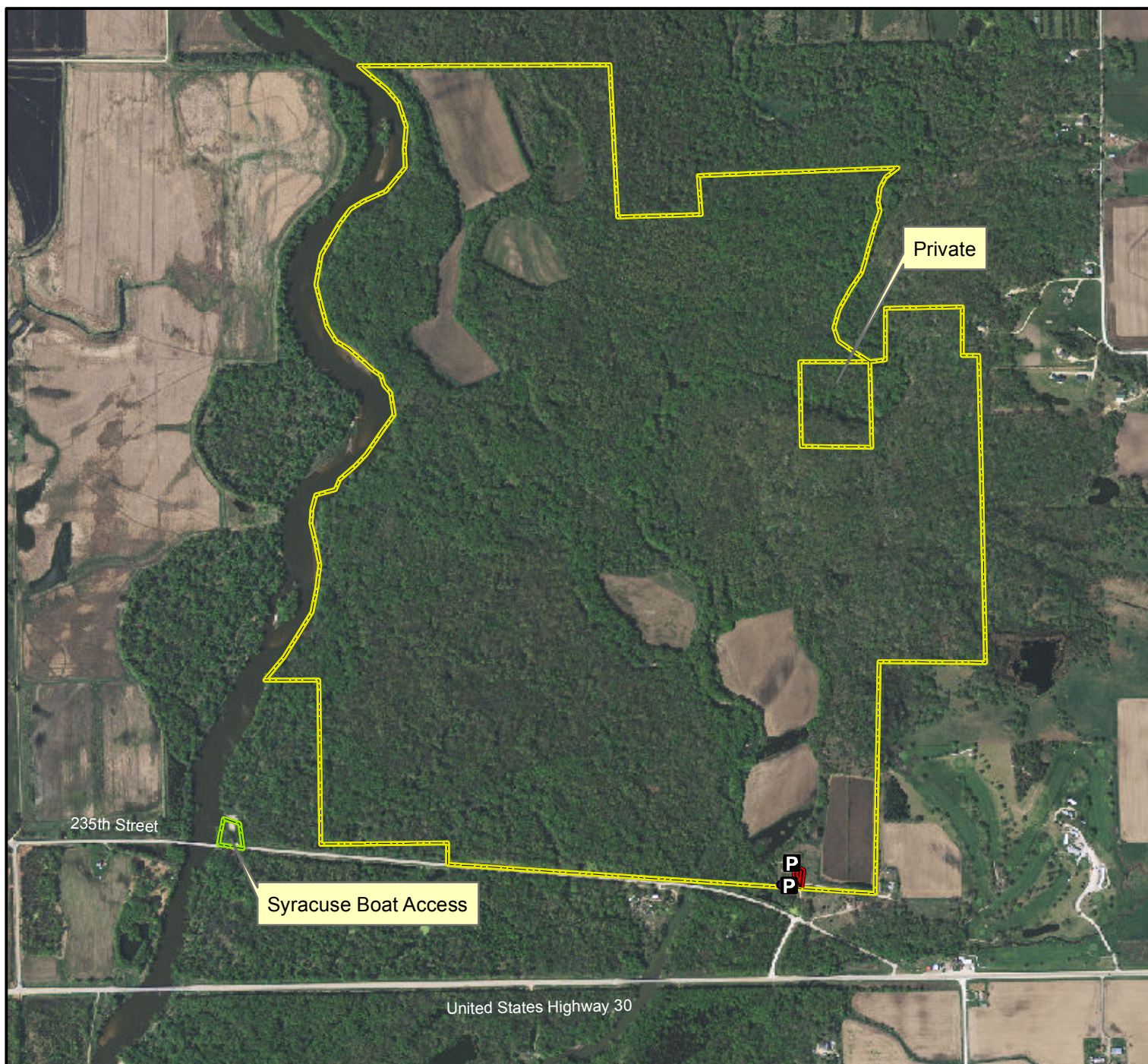


Syracuse Wildlife Management Area



Legend	
	State Areas open to hunting
	WMA Boundary
	Parking Lot
	Access Road
	Other Public Land
2010 Aerial Photography	

Map Creation Date: 8/2012

N

Miles

0 0.1 0.2

Acres: 709

Habitat: 3/4 Timber, 1/4 Upland

Species: Deer, Turkey, Dove
Squirrel, Waterfowl

Contact: Curt Kemmerer
Maquoketa Wildlife Unit
563-357-2035

Clinton County, Iowa
T-81N, R-01E,
Sections 1-2,11-12

Directions: 1 mile W of Calamus on Hwy 30, 0.25 mile N on 154th Ave.

Every effort has been made to accurately depict the boundaries on this map. However, users should rely on boundary signs actually located in this area to ensure they do not trespass on private property.