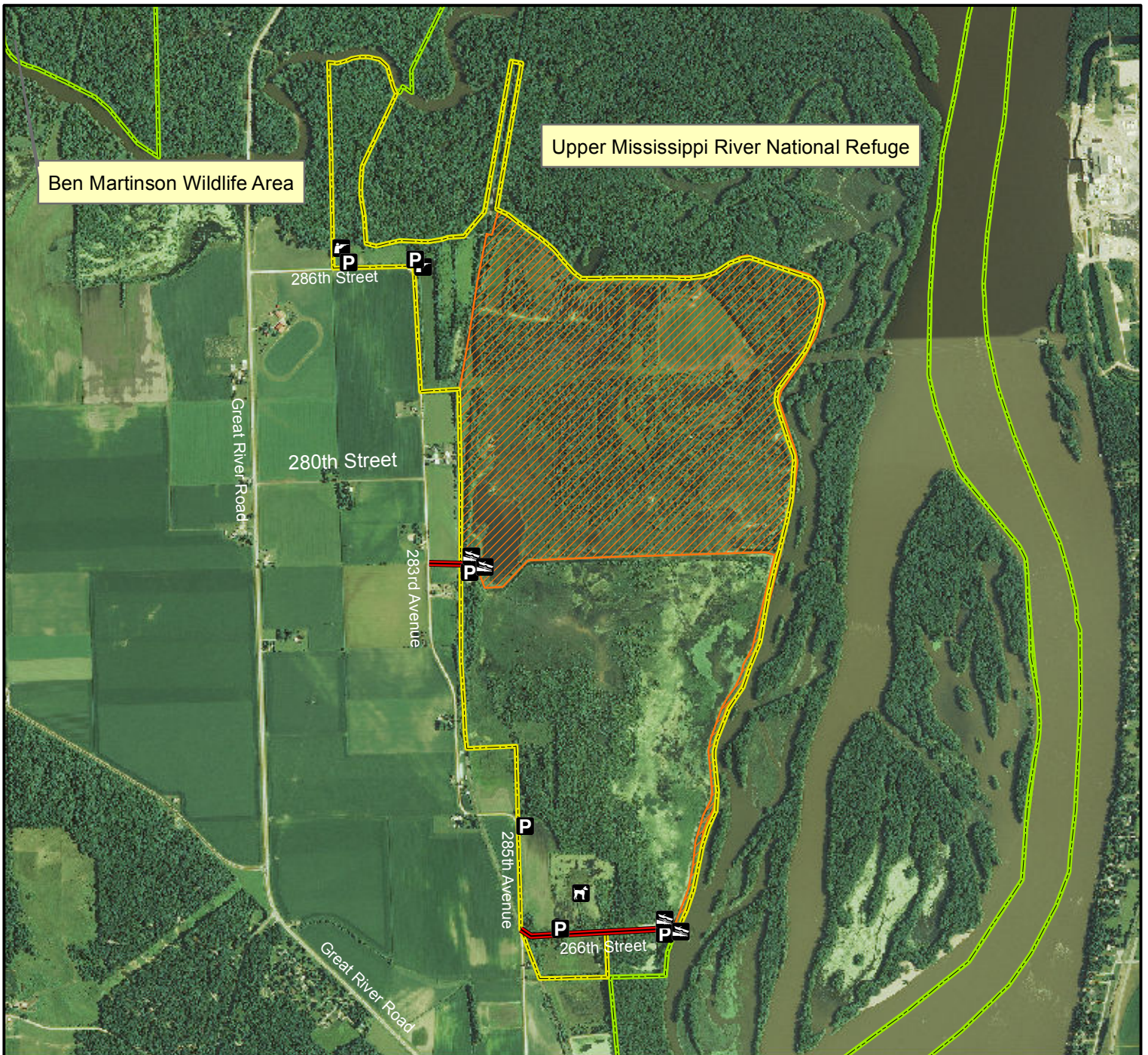



# Princeton Wildlife Management Area




**Legend** Map Creation Date: 8/2014

- State Areas open to hunting
- WMA Boundary
- Refuge
- Parking Lot
- Boat Ramp
- Dog Trial Area
- Shooting Range
- Access Road
- Other Public Land


2013 Aerial Photography





Miles

0 0.1 0.2



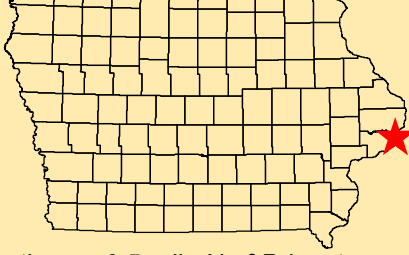
Acres: 1,187

Habitat: 3/4 Wetland, 1/4 Timber

Species: Deer, Turkey, Squirrel, Waterfowl, Dove

Contact: Curt Kemmerer  
Maquoketa Wildlife Unit  
563-357-2035

Scott County, Iowa  
T-80N, R-05E,  
Sections 14,23-26,35-36



*Directions: 0.5 mile N of Princeton on Hwy 67, 1 mile N on 285th Ave, E on 266th St.*

*Every effort has been made to accurately depict the boundaries on this map. However, users should rely on boundary signs actually located in this area to ensure they do not trespass on private property.*