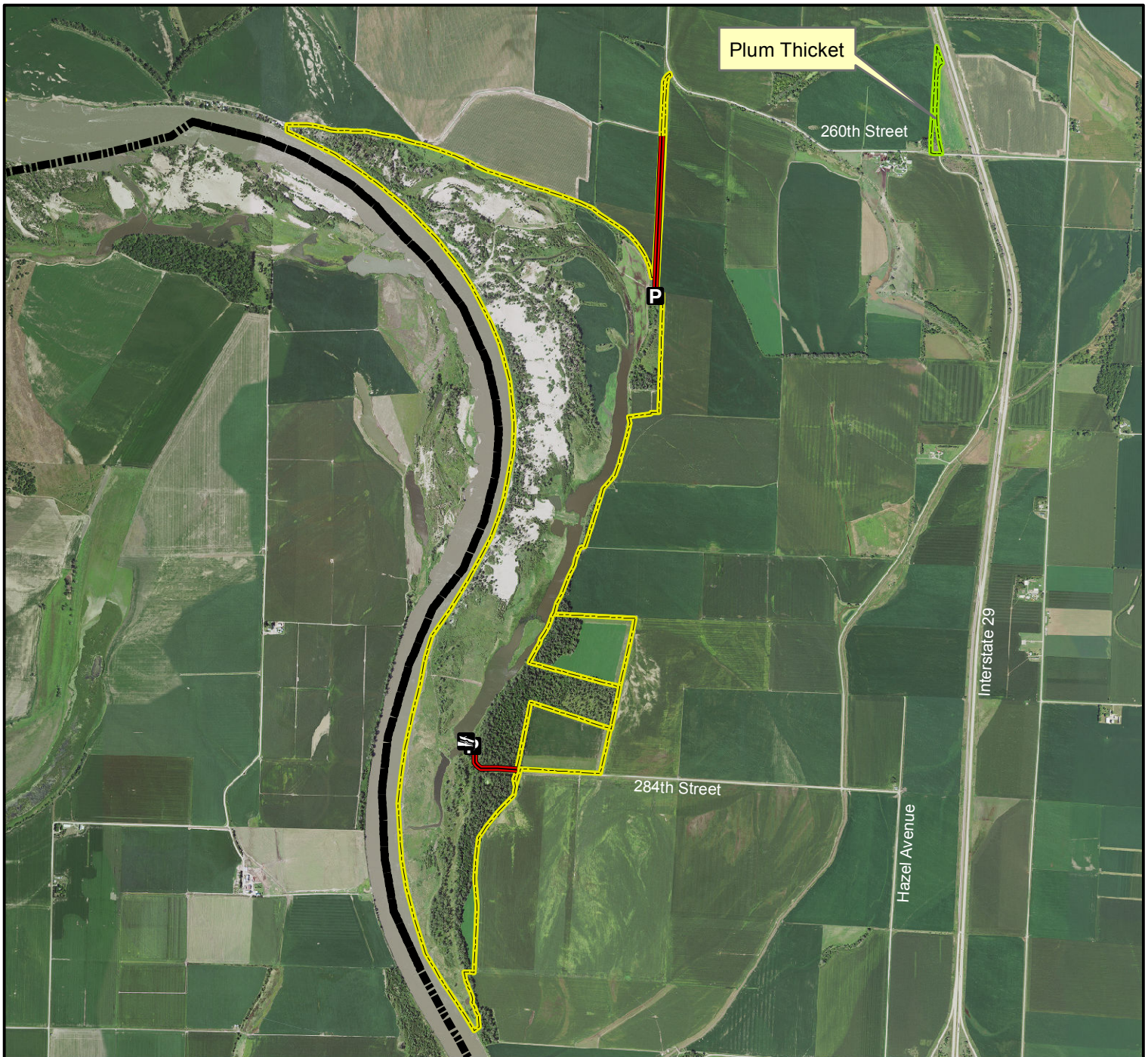


# Louisville Bend Wildlife Management Area





**Legend**

- State Areas open to hunting
- WMA Boundary
- Parking Lot
- State boundary
- Boat Ramp
- Access Road
- Other Public Land

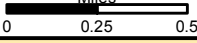
2017 Aerial Photography


Map Creation Date: 1/2018





Miles





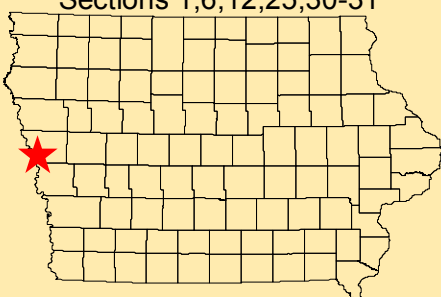
Acres: 995

Habitat: 1/2 Marsh, 1/4 Timber,  
1/4 Upland

Species: Deer, Turkey, Squirrel  
Pheasant, Rabbit,  
Waterfowl, Dove

Contact: Doug Chafa  
Missouri River Wildlife Unit  
712-420-2437

Monona County, Iowa  
T-82&83N, R-45&46W,  
Sections 1,6,12,25,30-31



*Directions: W of I-29 Blencoe exit,  
1 mile N on Hazel Ave,  
1.5 miles W on 284th St.*

Every effort has been made to accurately depict the boundaries on this map. However, users should rely on boundary signs actually located in this area to ensure they do not trespass on private property.