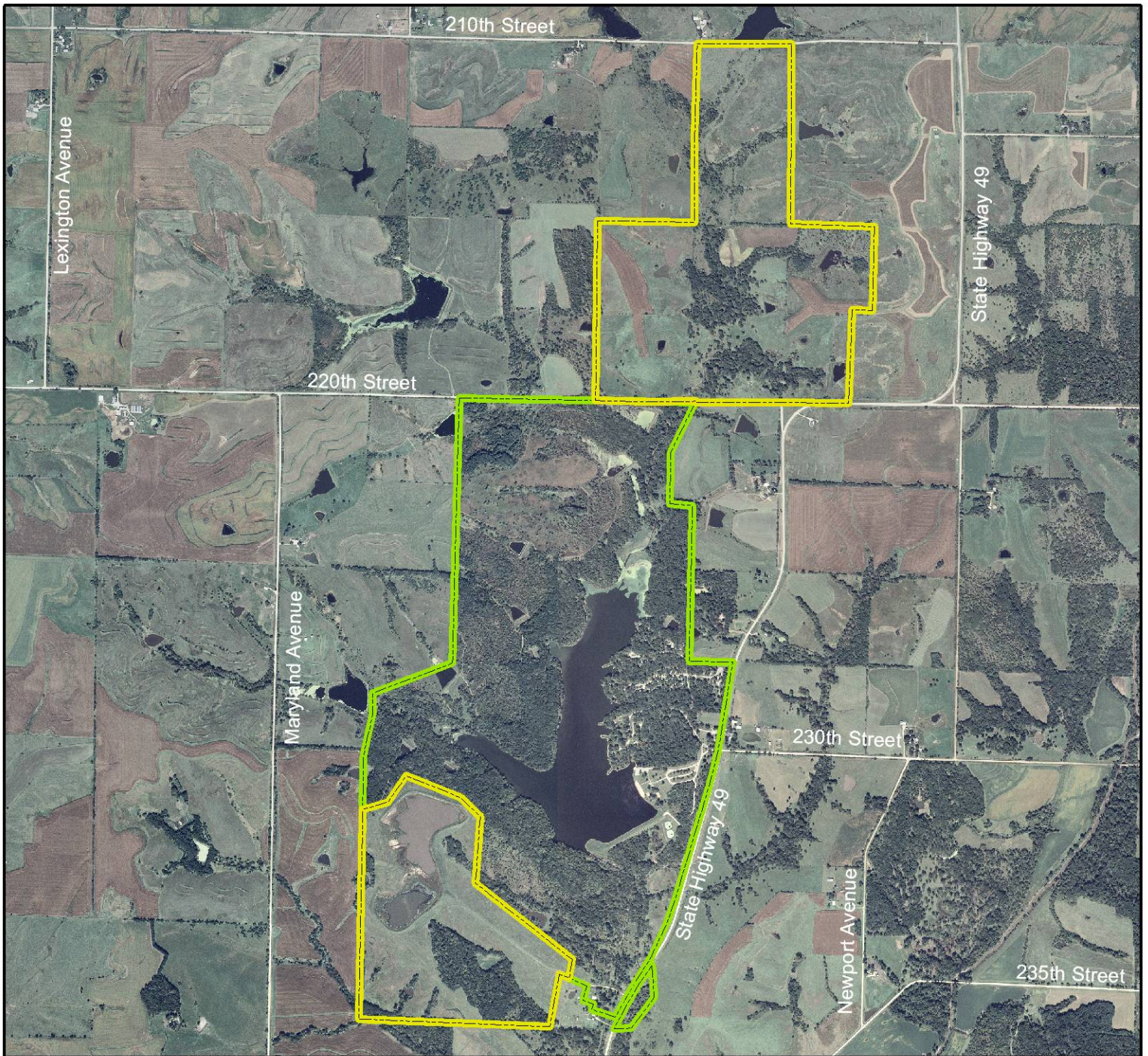




Lake of Three Fires State Park



Legend

-  State Areas open to hunting
 -  Areas with no hunting allowed
- 2006 Aerial Photography

Map Creation Date: 10/2008



N

0 0.25 0.5 Miles



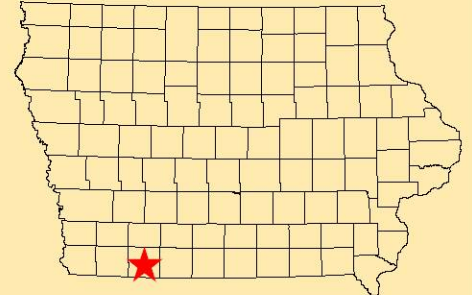
Acres: 492

Habitat: 2/3 Timber, 1/3 Woodland,
1/3 Crop

Species: D,T,R,S,W

Contact: Park Office
712-523-2700

Taylor County, Iowa
T-68N, R-33&34W,
Sections 1,6-7,12-13,31-32



Directions: S end 2 miles N of Bedford on
Hwy 49. N end 4 miles N

Every effort has been made to accurately depict the boundaries on this map. However, users should rely on boundary signs actually located in this area to ensure they do not trespass on private property.