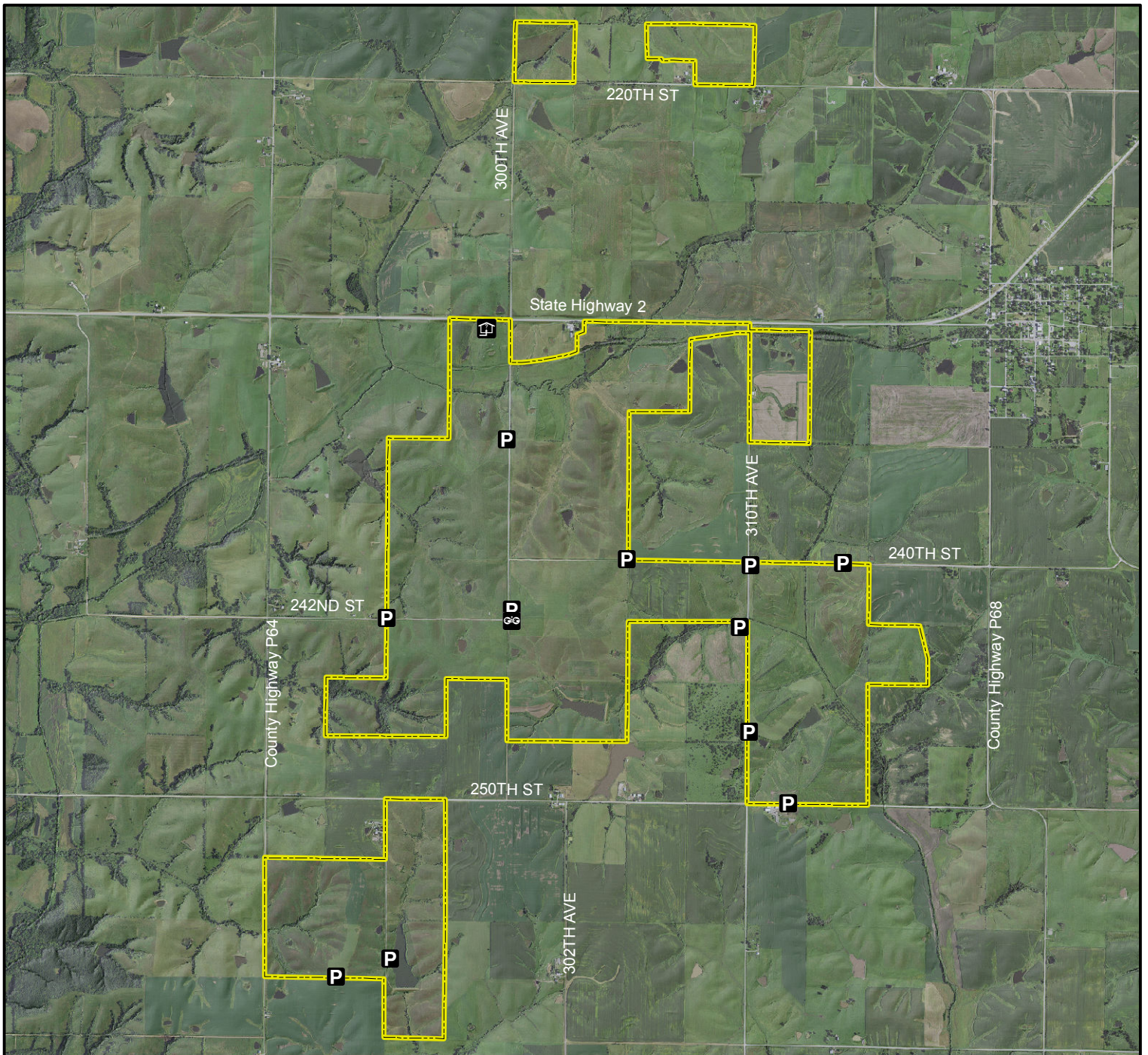


# Kellerton Wildlife Management Area





**Legend**

- State Areas open to hunting
- WMA Boundary
- Unit Headquarters
- Parking Lot
- Viewing Platform

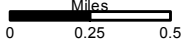
2015 Aerial Photography


Map Creation Date: 8/2017





Miles





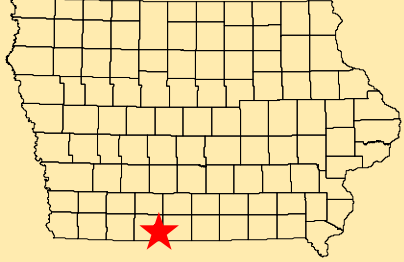
Acres: 1,979

Habitat: Upland

Species: Deer, Pheasant, Dove

Contact: Chad Paup  
Grand River Wildlife Unit  
515-238-5708

Ringgold County, Iowa  
T-68/69N, R-28W,  
Sections 8-10,16-17,20,33



*Directions: 2 miles W of Kellerton on Hwy 2, 1 mile S on gravel.*

*Every effort has been made to accurately depict the boundaries on this map. However, users should rely on boundary signs actually located in this area to ensure they do not trespass on private property.*