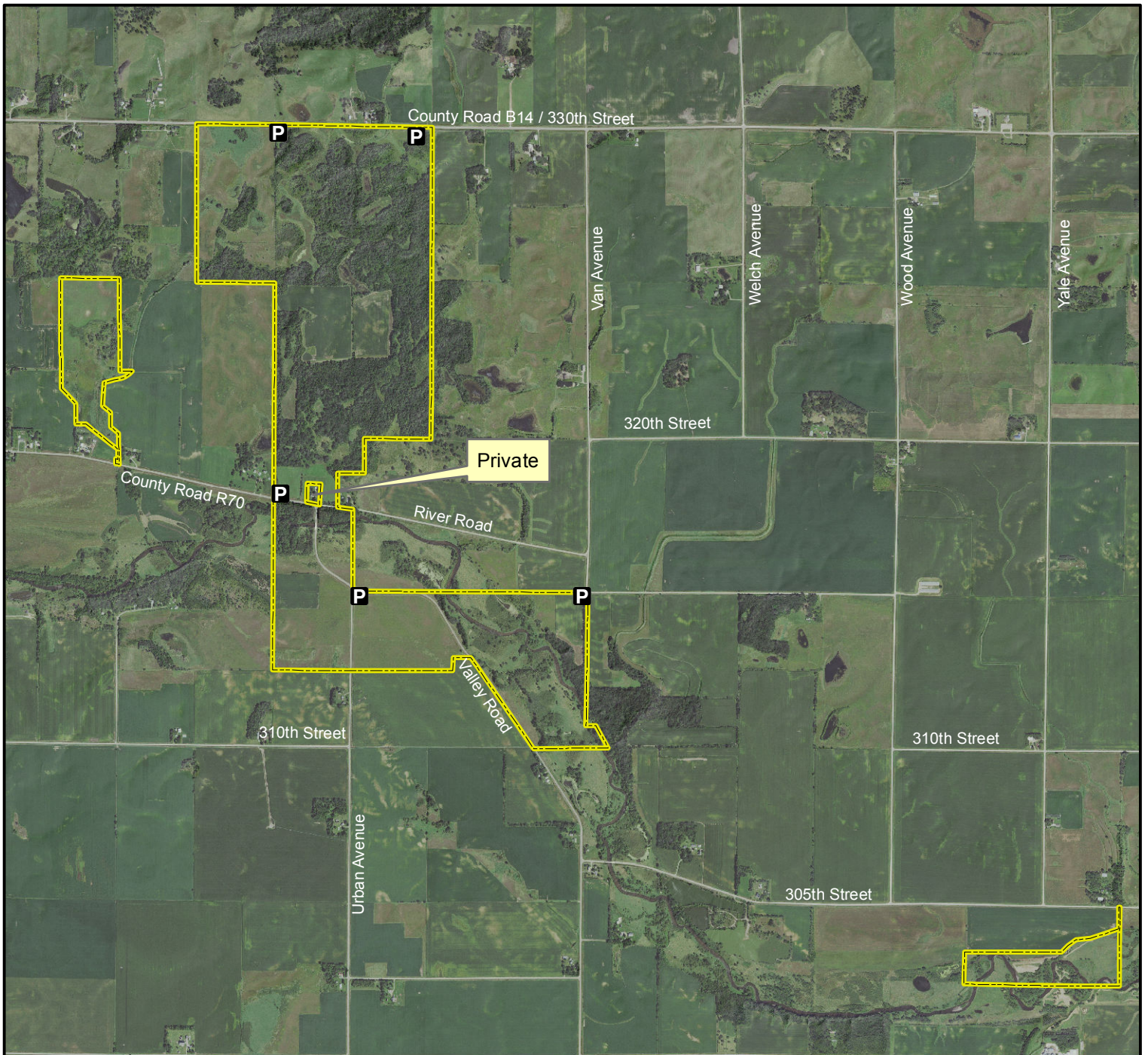


Gabrielson Wildlife Management Area



Legend

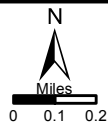
State Areas open to hunting

 WMA Boundary

 Parking Lot

2015 Aerial Photography

Map Creation Date: 3/2017



Acres: 786

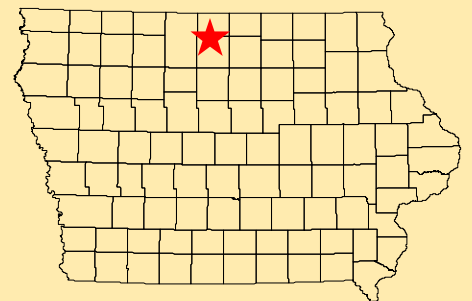
Habitat: 2/3 Marsh Timber,
1/3 Upland

Species: Deer, Turkey, Pheasant,
Waterfowl

Contact: TJ Herrick
Clear Lake Wildlife Unit
641-829-3285

Restrictions: Non-Toxic Shot

Hancock County, Iowa
T-97N, R-23W, Sections 8-9, 15-16, 23-24



Directions: 3.5 miles E of Forest City on
B14.

Every effort has been made to accurately depict the boundaries on this map. However, users should rely on boundary signs actually located in this area to ensure they do not trespass on private property.