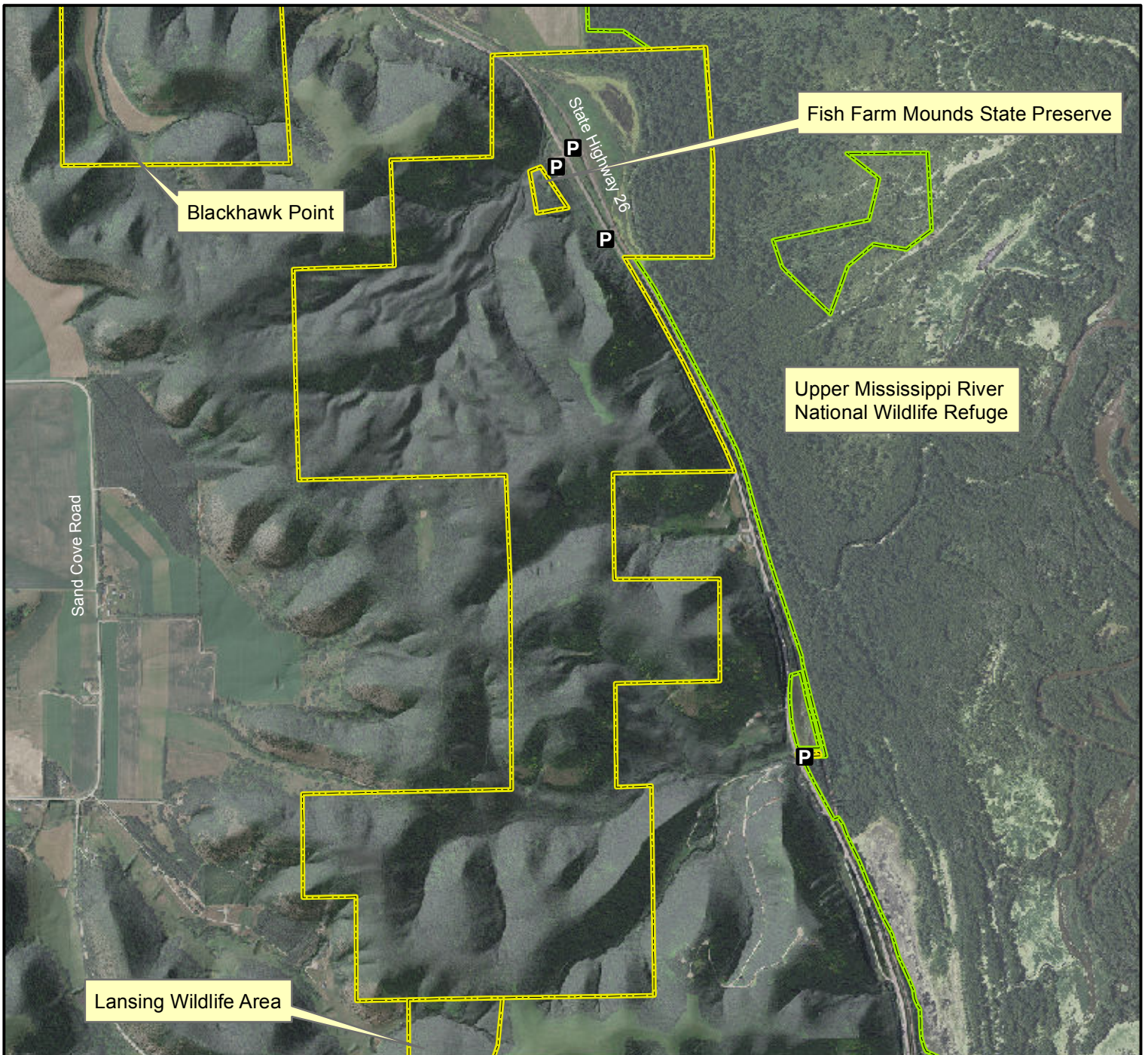


Fish Farm Mounds Wildlife Management Area



Legend

- State Areas open to hunting
- WMA Boundary
- Parking Lot
- Other Public Land
- 2011 Aerial Photography

Map Creation Date: 7/2013

Acres: 912

Habitat: Timber

Species: Deer, Turkey, Squirrel, Grouse, Waterfowl

Contact: Terry Haindfield
Upper Iowa Wildlife Unit
563-546-7960

Allamakee County, Iowa
T-100N, R-4W, Sections 23,26,35

Directions: 3 miles S of New Albin on Hwy 26.

Every effort has been made to accurately depict the boundaries on this map. However, users should rely on boundary signs actually located in this area to ensure they do not trespass on private property.