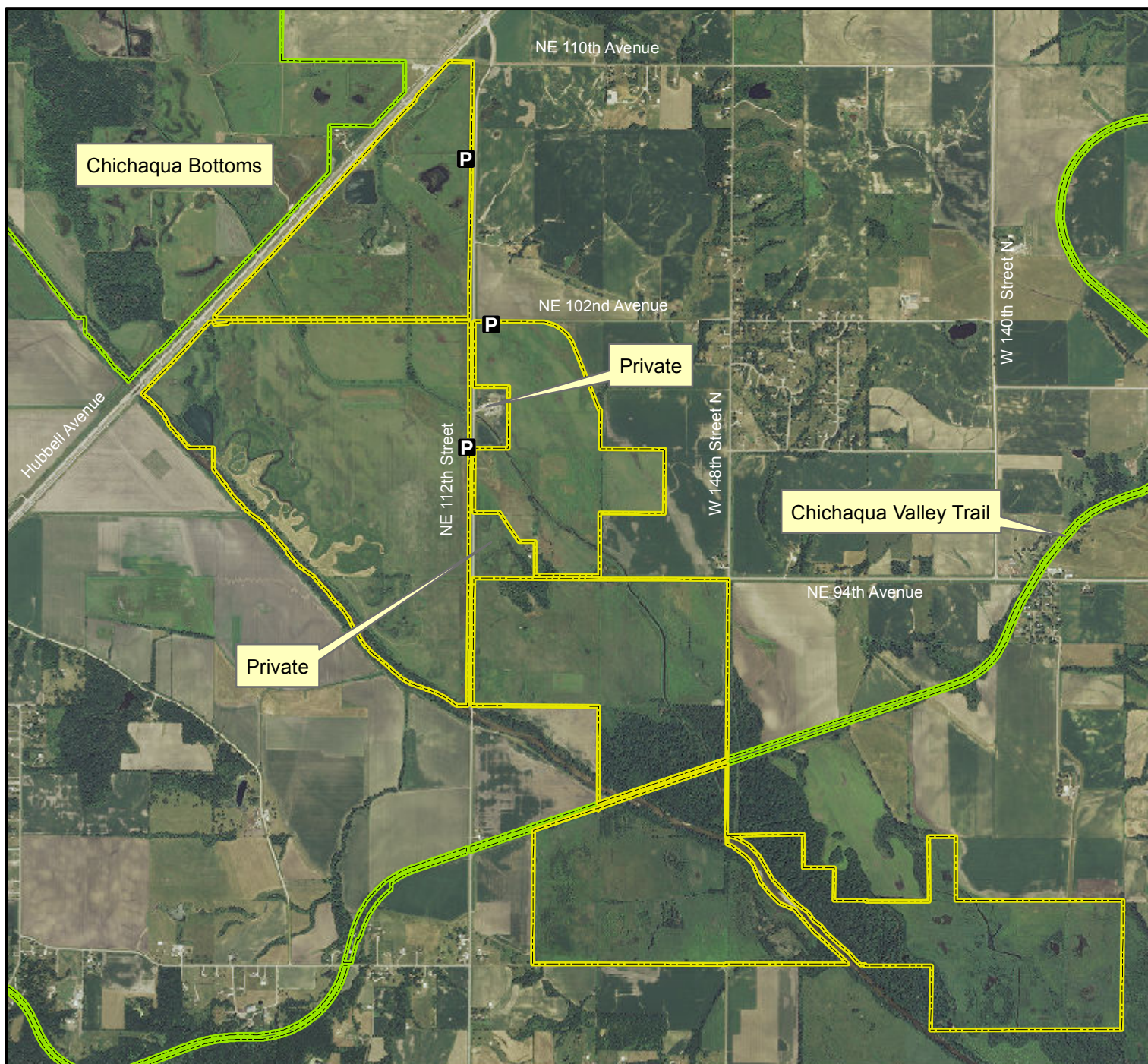


Chichaqua Wildlife Management Area



Legend

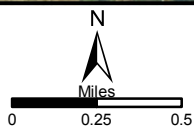
State Areas open to hunting

WMA Boundary

Parking Lot

Other Public Land
2013 Aerial Photography

Map Creation Date: 8/2014



Acres: 2,512

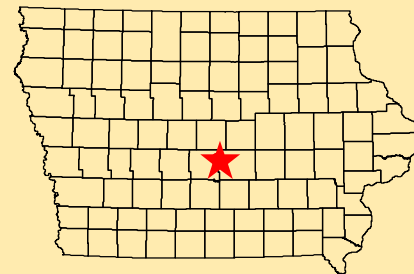
Habitat: Prairie Upland & Timber

Species: Deer, Turkey,
Pheasant, Waterfowl, Dove

Contact: Todd Gosselink
Red Rock Wildlife Unit
515-238-6936

Restrictions: Non-Toxic Shot

Polk & Jasper Counties, Iowa
T-80N, R-21&22W,
Sections 11,13-15,23-25,29-30



Directions: Skunk River Valley,
NE Polk Co.

Every effort has been made to accurately depict the boundaries on this map. However, users should rely on boundary signs actually located in this area to ensure they do not trespass on private property.