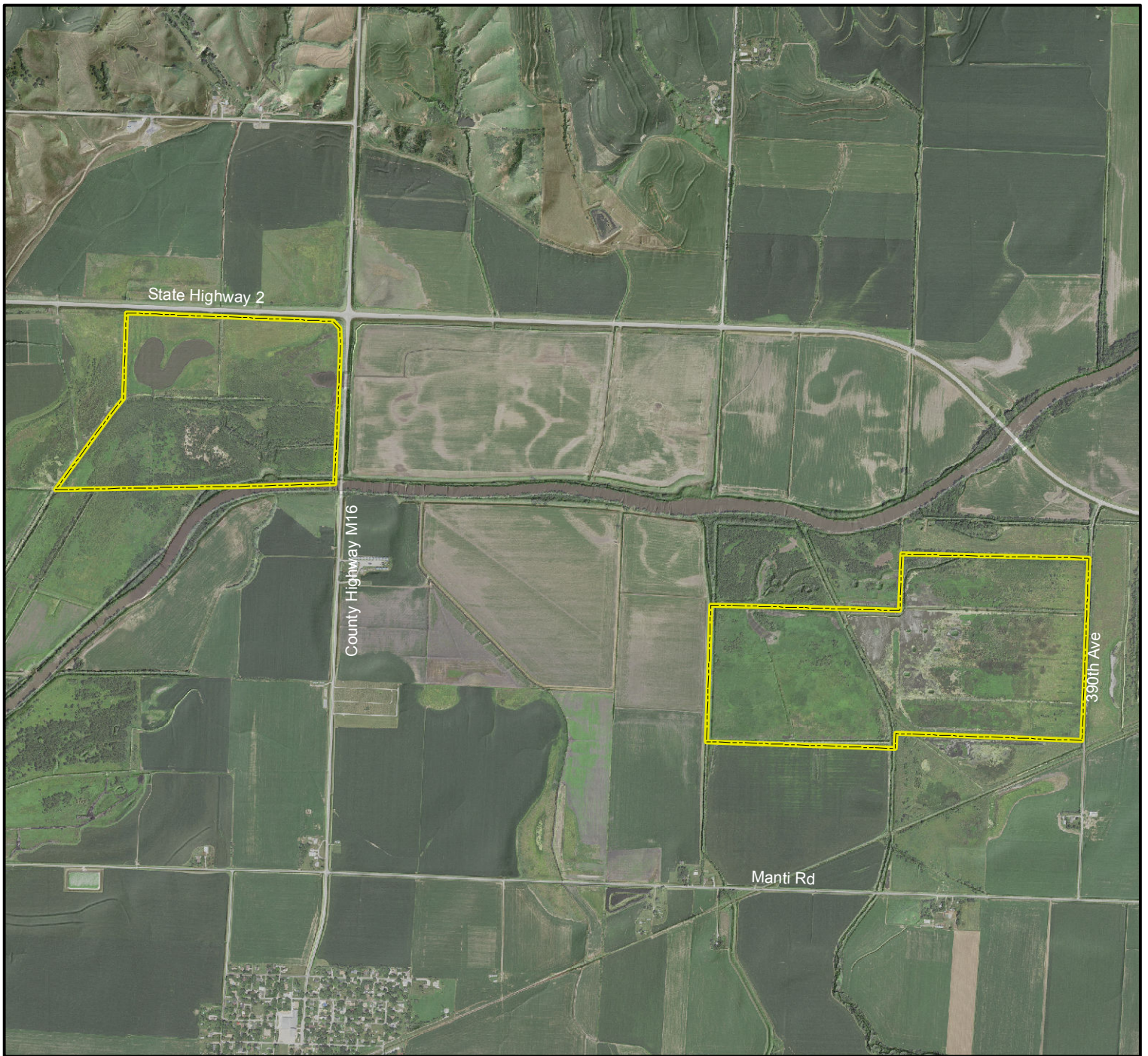






Botna Bottoms Wildlife Management Area



Legend

- State Areas open to hunting
-  WMA Boundary
- 2017 Aerial Photography

Map Creation Date: 9/2018

Miles
0 0.25 0.5

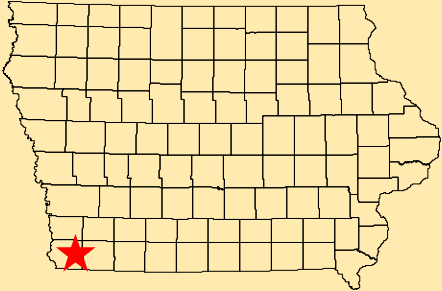
Acres: 441

Habitat: 45% Bottomland Forest, 35% Wetland, 20% Grassland

Species: Deer, Turkey, Pheasant, Waterfowl

Contact: Matt Dollison
Nishnabotna Wildlife Unit
712-350-0147

Fremont County, Iowa
T-69N, R-40W, Section 30 & 33



Directions: SW of intersection of Hwy 2 and M16, 0.25 mile S of Hwy 2 on 390th Ave

Every effort has been made to accurately depict the boundaries on this map. However, users should rely on boundary signs actually located in this area to ensure they do not trespass on private property.