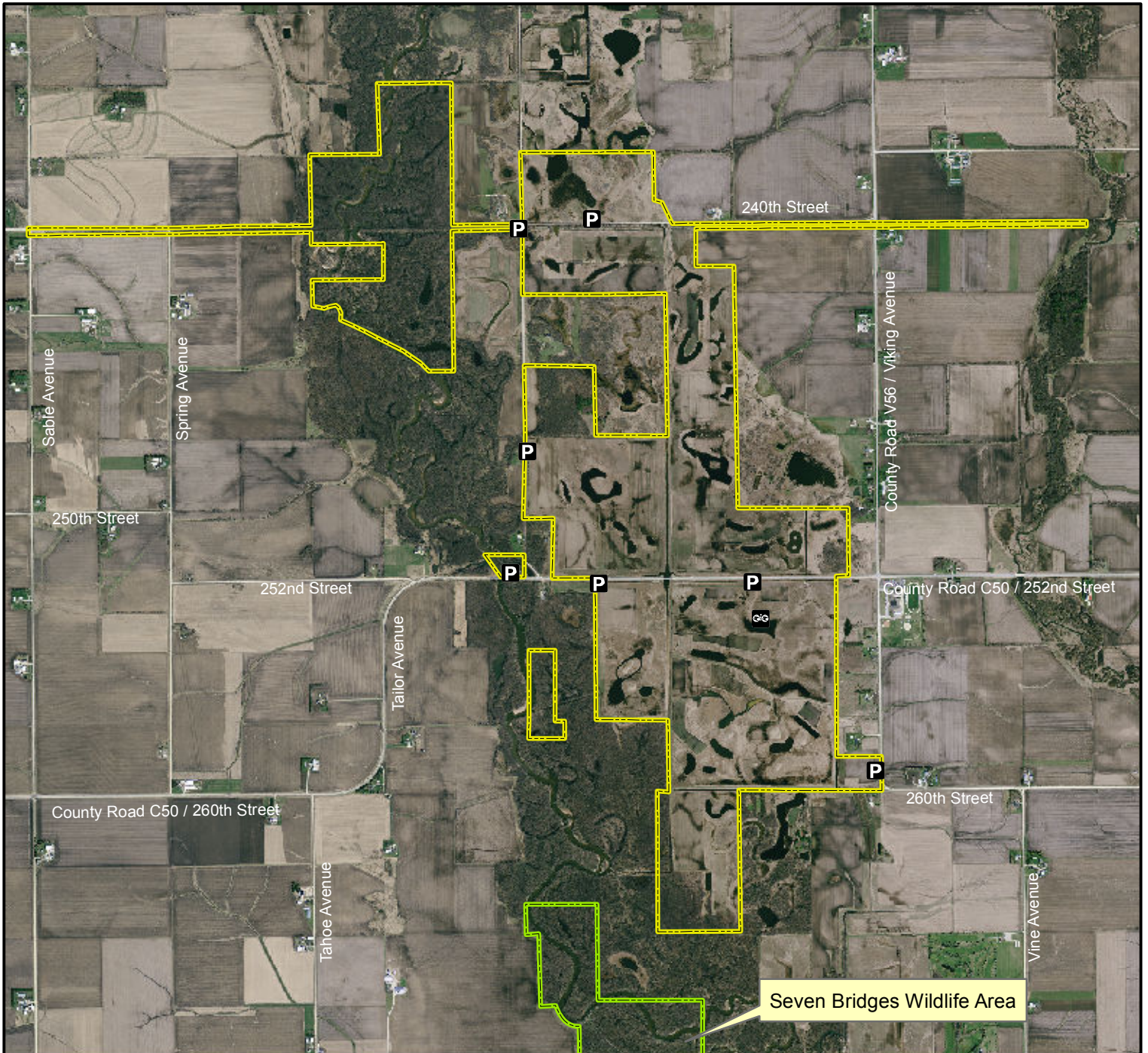


Aldo Leopold Wildlife Management Area



Legend

- State Areas open to hunting
- WMA Boundary
- Parking Lot
- Scenic Overlook
- Other Public Land
- 2010 Aerial Photography

Map Creation Date: 9/2012

Acres: 1,356

Habitat: Marsh, Upland

Species: Deer, Pheasant, Waterfowl, Dove

Contact: Jason Auel
Cedar-Wapsi Wildlife Unit
319-213-2815

Bremer County, Iowa
T-91N, R-11W,
Sections 8,15-18,20-21,28

Directions: 3 miles E of Readlyn on Hwy 3,
2.25 miles S on Timber Rd,
0.5 mile E on 252nd St.

Every effort has been made to accurately depict the boundaries on this map. However, users should rely on boundary signs actually located in this area to ensure they do not trespass on private property.