

Iowa Ozone Monitoring Locations and Design Values for Ozone 2023-2025

A design value is a tool that can be used to understand pollution levels at a specific location. A design value may be set for any pollutant. The U.S. EPA's official definition is explained this way: "a design value is the mathematically determined pollutant concentration at a particular site that must be reduced to, or maintained at or below the National Ambient Air Quality Standard to assume attainment." The design value number tells us how a particular site or area compares with the National Ambient Air Quality Standards (NAAQS).

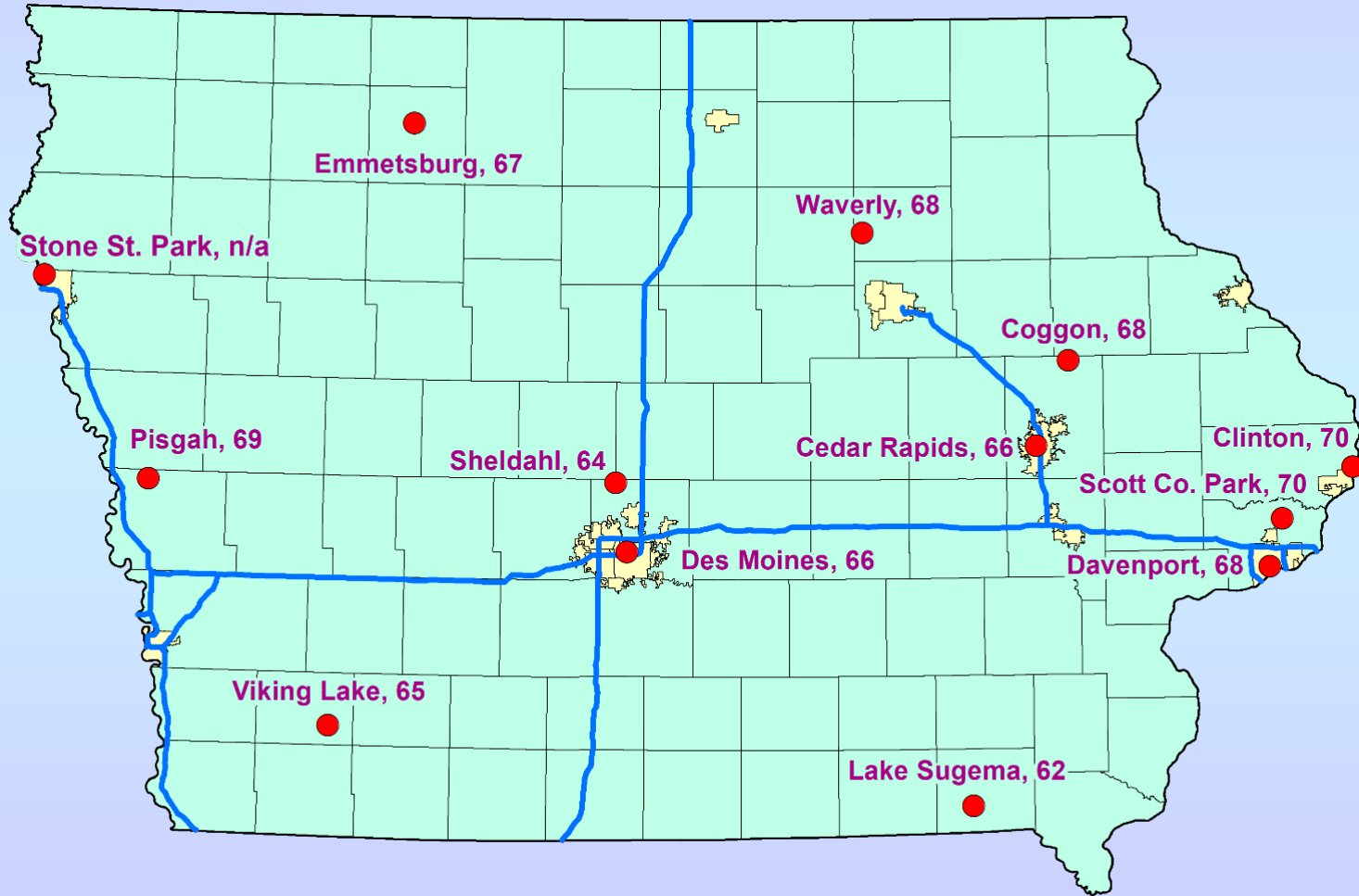
Iowa ozone monitor location and information is detailed on the following pages. The EPA design value for 8-hour ozone is equal to the average of the 4th highest annual daily maximum 8-hour value for the most recent three years. EPA promulgated new lower ozone standards on October 1, 2015 and that standard is still in effect. A monitoring site must have a design value less than 71 parts per billion to be considered "in attainment" with the ozone NAAQS. All monitoring sites in Iowa are in attainment with the 8-hour ozone NAAQS. Additional information on the ozone standard is available here: [Ozone National Ambient Air Quality Standards](#).

Iowa Ozone Monitors (2025)

AQS Site ID	Site Name	Location	County
19-017-0011	Waverly, Airport	Waverly	Bremer
19-045-0021	Clinton, Rainbow Park	Clinton	Clinton
19-085-0007	Pisgah, Forestry Office	Pisgah	Harrison
19-113-0033	Coggon Elementary School	Coggon	Linn
19-113-0040	Cedar Rapids, Public Health	Cedar Rapids	Linn
19-137-0002	Viking Lake State Park	Red Oak	Montgomery
19-147-1002	Emmetsburg, Iowa Lakes CC	Emmetsburg	Palo Alto
19-153-0030	Des Moines, Health Dept.	Des Moines	Polk
19-153-1579	Sheldahl	Sheldahl	Polk
19-163-0014	Scott County Park	Davenport	Scott
19-163-0015	Davenport, Jefferson School	Davenport	Scott
19-177-0006	Lake Sugema	Lake Sugema	Van Buren
19-193-0022	**Stone State Park	Sioux City	Woodbury
**The Stone State Park Monitor began operating in 2024			

Iowa Ozone Design Values: 2023-2025

Values in ppb, values greater than 70 exceed the standard



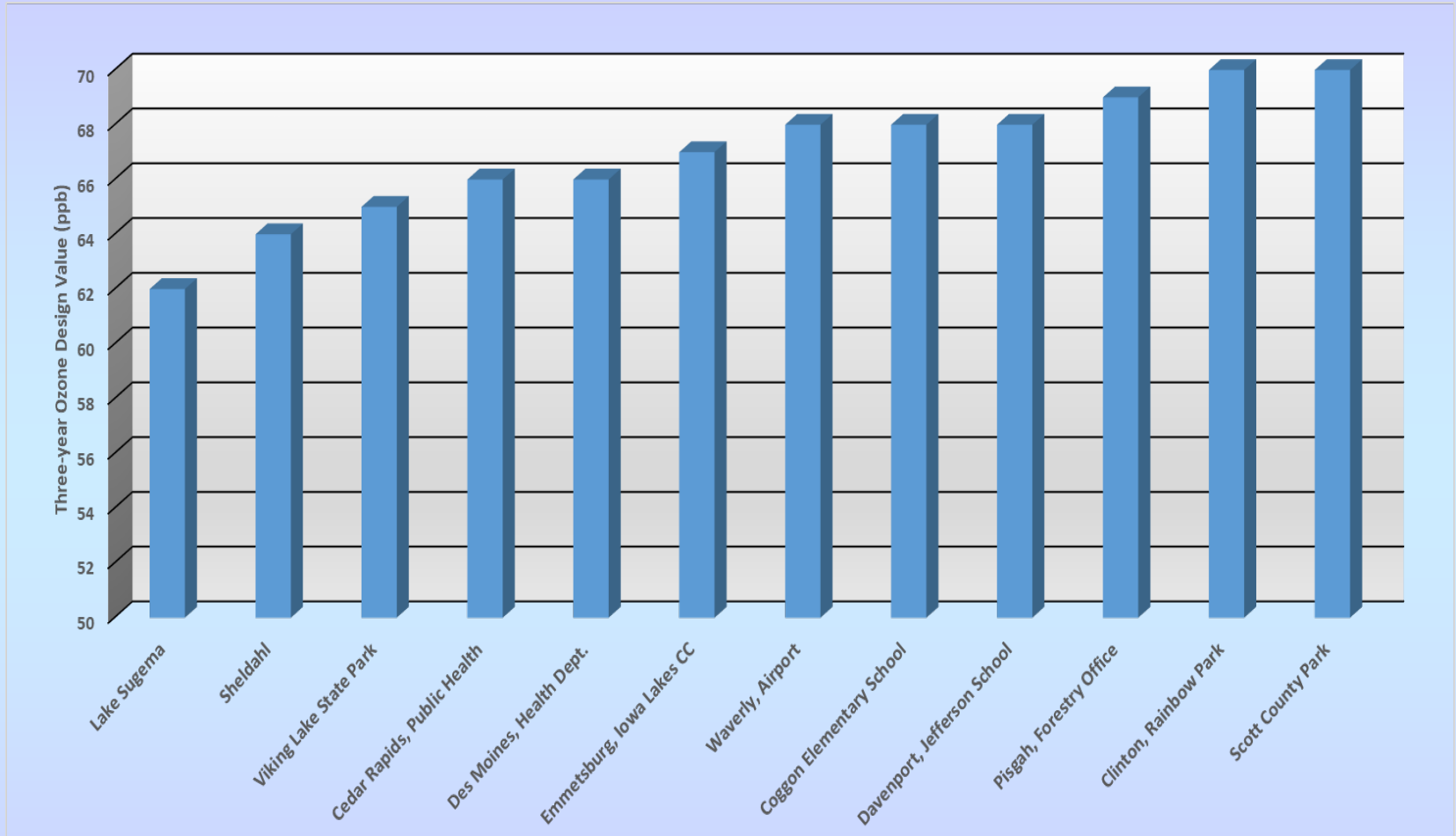
Iowa Ozone Design Values 2025**

County	City	EPA Site Id	Year	4th Highest Daily Maximum 8hr Ozone Concentration (ppb)	3-year Average (ppb) of 4th Highest	Years Averaged
Bremer	Waverly	19-017-0011	2023	78	68	2023-2025
			2024	60		
			2025	67		
Clinton	Clinton	19-045-0021	2023	78	70	2023-2025
			2024	63		
			2025	69		
Harrison	Pisgah	19-085-0007	2023	77	69	2023-2025
			2024	64		
			2025	67		
Linn	Coggon	19-113-0033	2023	78	68	2023-2025
			2024	59		
			2025	67		
Linn	Cedar Rapids	19-113-0040	2023	80	66	2023-2025
			2024	58		
			2025	62		
Montgomery	Red Oak (Viking Lake)	19-137-0002	2023	72	65	2023-2025
			2024	58		
			2025	65		

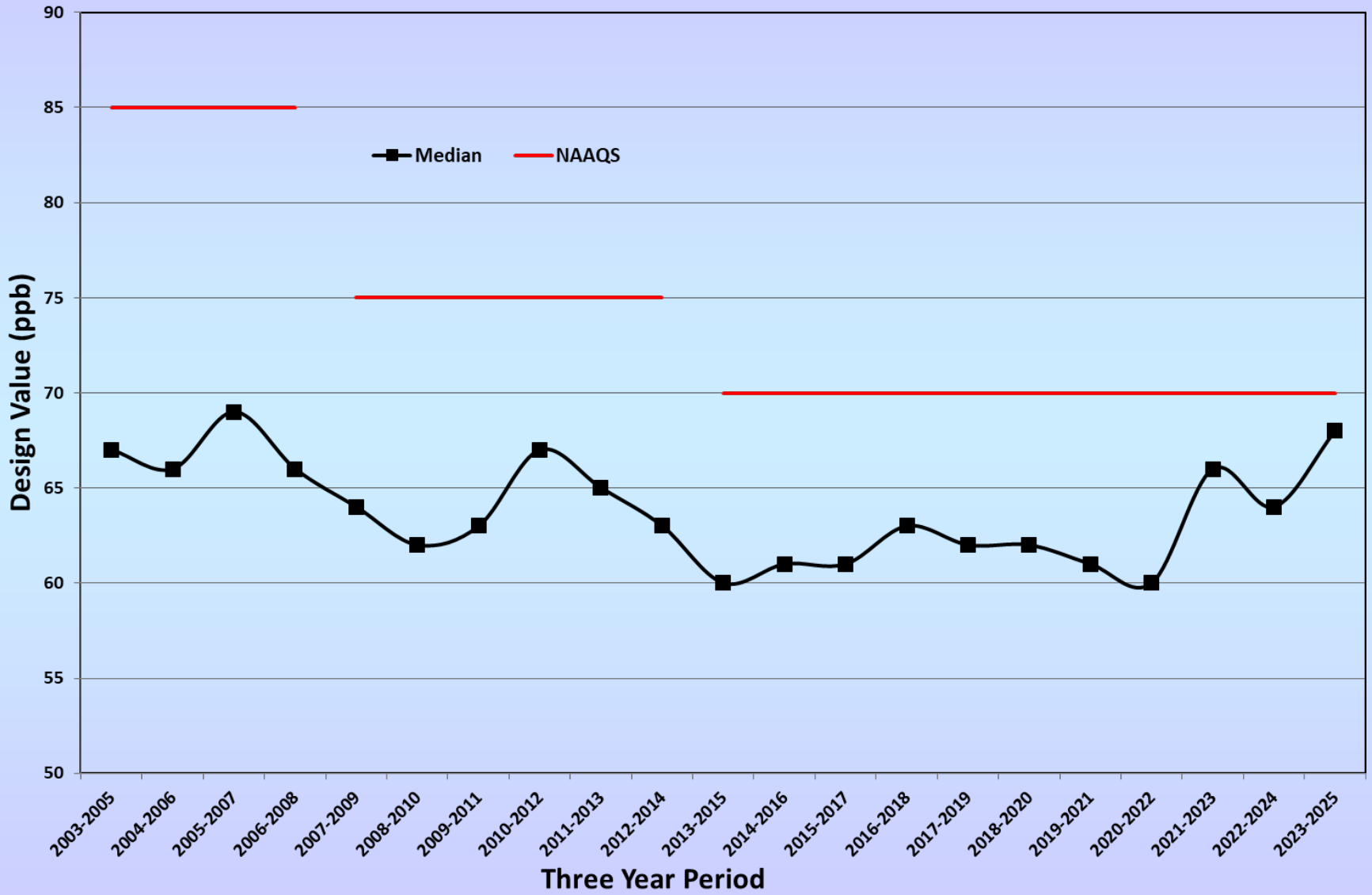
Iowa Ozone Design Values 2025** Continued

County	City	EPA Site Id	Year	4th Highest Daily Maximum 8hr Ozone Concentration (ppb)	3-year Average (ppb) of 4th Highest	Years Averaged
Palo Alto	Emmetsburg	19-147-1002	2023	75	67	2023-2025
			2024	60		
			2025	68		
Polk	Des Moines	19-153-0030	2023	77	66	2023-2025
			2024	59		
			2025	64		
Polk	Sheldahl	19-153-1579	2023	72	64	2023-2025
			2024	59		
			2025	63		
Scott	Davenport	19-163-0014	2023	80	70	2023-2025
			2024	61		
			2025	69		
Scott	Davenport	19-163-0015	2023	76	68	2023-2025
			2024	62		
			2025	67		
Van Buren	Keosauqua (Lake Sugema)	19-177-0006	2023	68	62	2023-2025
			2024	60		
			2025	60		
(Three Year Averages Greater Than 70 ppb Indicate Non-Attainment with the NAAQS)						
**Values considered preliminary until EPA verifies the statistics in summer, 2026						

Iowa Ozone Design Values Chart: 2023-2025



Median Ozone Design Values in Iowa Ozone Monitoring Network



Web Resources

Iowa Real-time Data Reporting :

In Polk County:

<https://www.polkcountyiowa.gov/public-works/air-quality/air-quality-monitoring/current-aqi-real-time-data/>

In Linn County:

<https://www.linncountyiowa.gov/1431/Ambient-Air-Monitoring>

Outside Polk and Linn Counties:

<https://www.shl.uiowa.edu/env/ambient/data.xml>

Design Values for All Pollutants Nationwide:

<https://www.epa.gov/air-trends/air-quality-design-values>

Real-time Ozone and Particulate Maps:

<https://www.airnow.gov/>

Historical Air Pollution Data for Iowa and Other States:

<https://www.epa.gov/outdoor-air-quality-data>