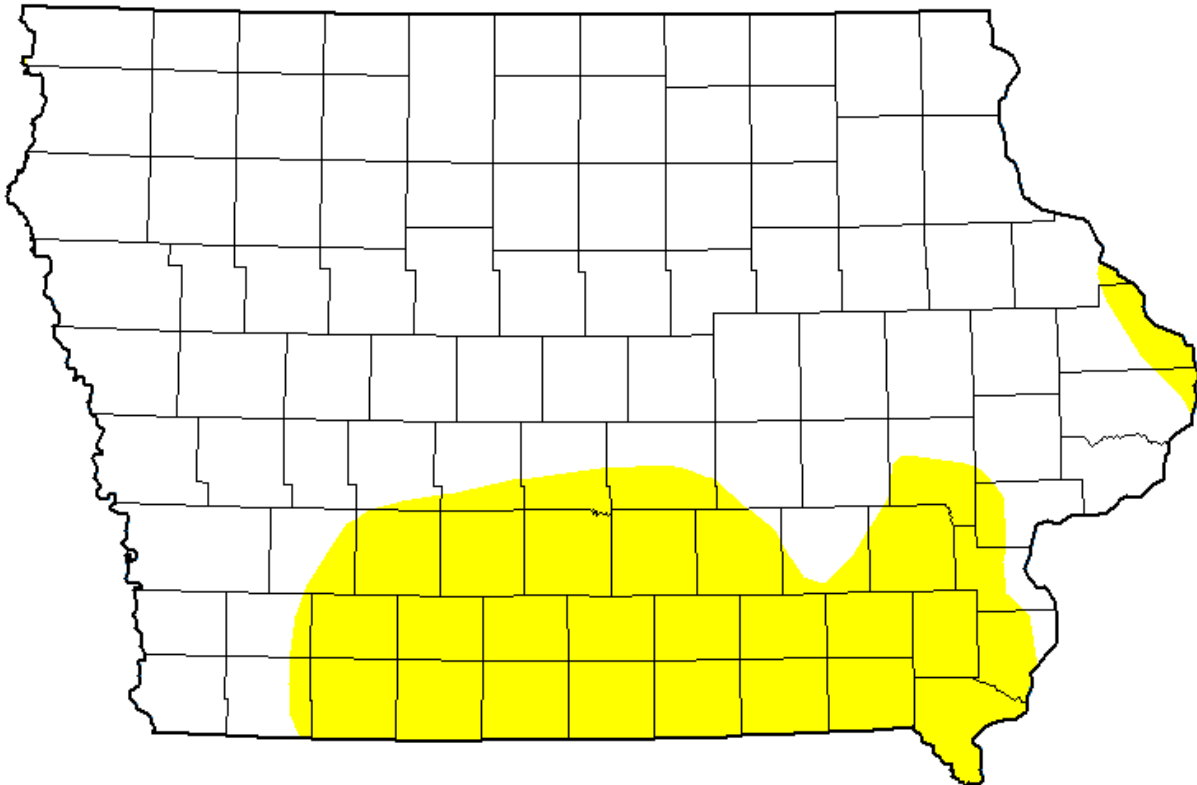


General Use Field Evaluation

NPDES Facility and Permit Number	Twin View Heights Homeowners Assoc. PWS (5200329)
NPDES Outfall Latitude, Longitude (Decimal Degrees)	41.81029, -91.57380
Water Body Name	Unnamed Tributary to Coralville Lake
Segment Description	Mouth to Twin View Heights Homeowners Assoc. PWS outfall
Segment Length (ft)	867
Segment Start (Downstream) Latitude, Longitude (Decimal Degrees)	41.81004, -91.57675
Segment End (Upstream) Latitude, Longitude (Decimal Degrees)	41.81029, -91.57380
Number of Sites	2
County Name(s)	Johnson
Field Work Date(s)	9/19/2025

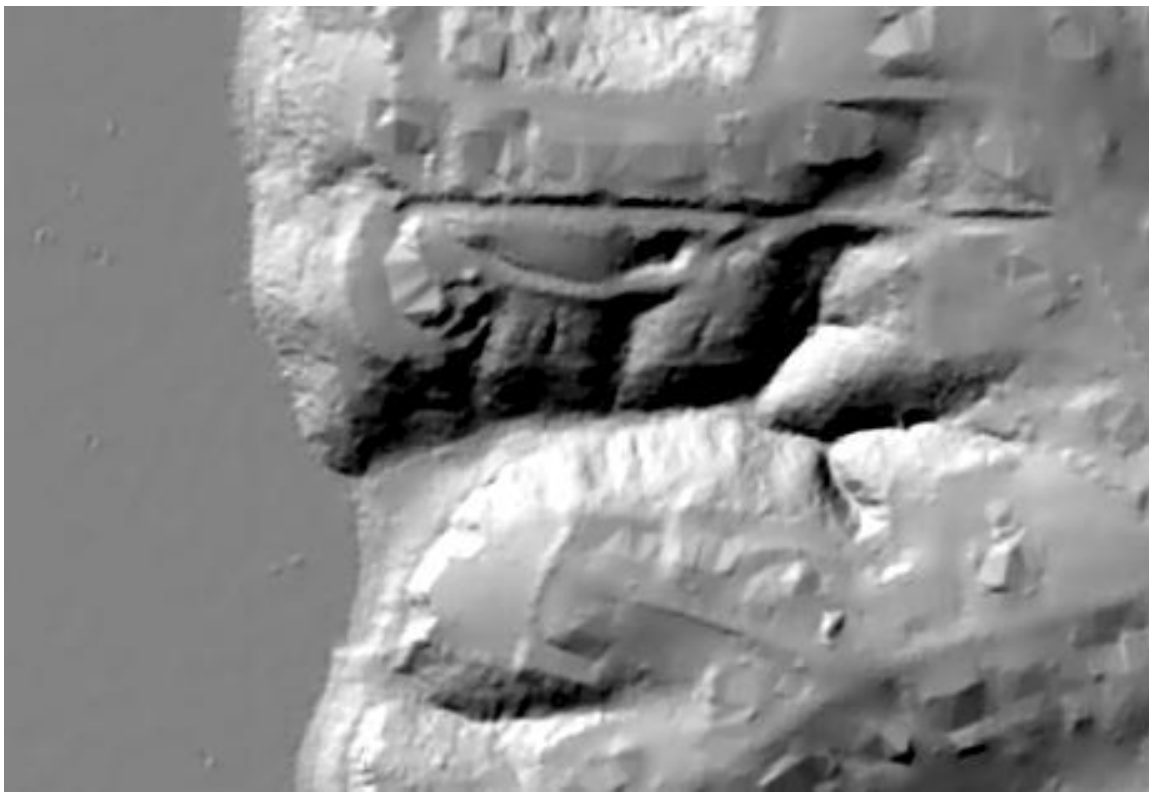
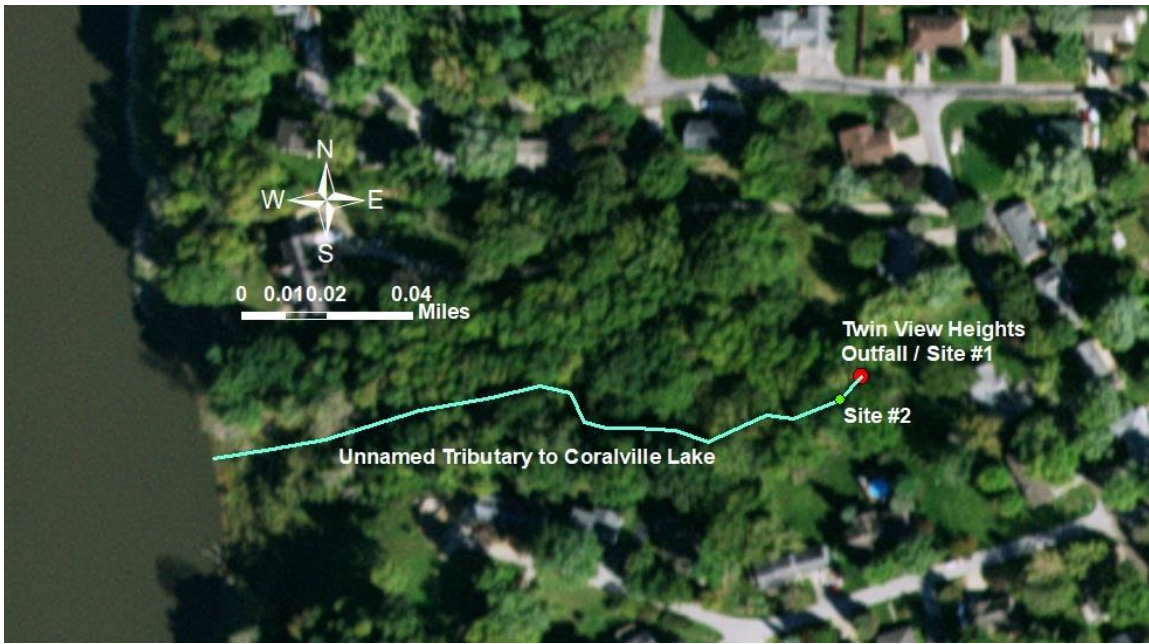
Flow

Gauge	At USGS Gage # 05453100 Iowa River at Marengo, Iowa
Description	USGS stream gage data for the area indicated stream flows were above normal at the time of assessment.
U.S. Drought Monitor Intensity	None



Drought monitor at the time the fieldwork was conducted.

Attachments: Site Photos and Map



Site # 1

Description/location	41.81029, -91.57380 Outfall
Water conditions	None
Average/max depths	None
Aquatic life present	None
Unusual conditions	None
Channel description	Wet and filled with branches and leaf litter. Sharp drop off into the Coralville reservoir.
Physical barriers/objects of significance	None
Human activity/evidence of recreation	None



Figure 1. Site #1. Outfall.

Site # 2

Description/location	41.81021, -91.57390
Water conditions	None
Average/max depths	None
Aquatic life present	None
Unusual conditions	None
Channel description	Wet and filled with branches and leaf litter. Sharp drop off into the Coralville reservoir.
Physical barriers/objects of significance	None
Human activity/evidence of recreation	None



Figure 2. Site #2. Upstream.



Figure 3. Site #2. Downstream.