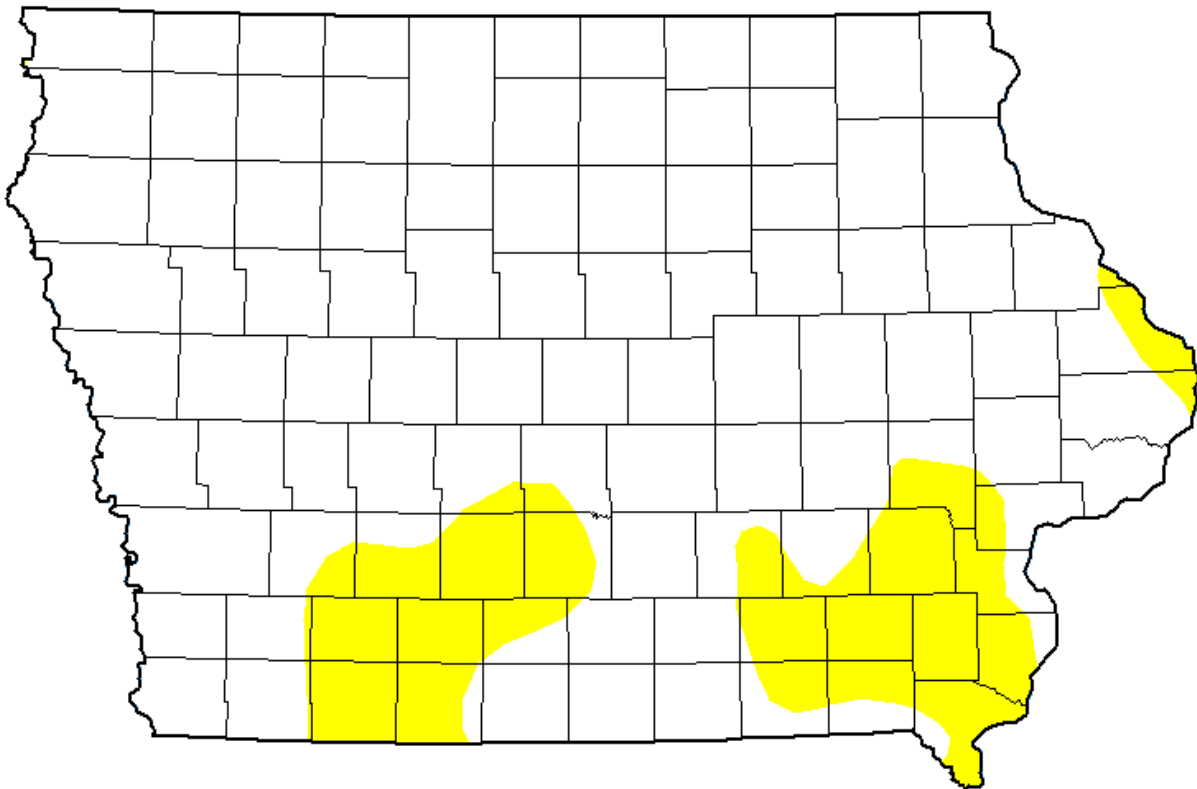


General Use Field Evaluation

NPDES Facility and Permit Number	Granada Gardens Mobile Home Park (3100605)
NPDES Outfall Latitude, Longitude (Decimal Degrees)	42.56528, -90.72278
Water Body Name	Unnamed Tributary to Little Maquoketa River
Segment Description	Mouth to Granada Gardens MHP outfall
Segment Length (ft)	2350
Segment Start (Downstream) Latitude, Longitude (Decimal Degrees)	42.56354, -90.71721
Segment End (Upstream) Latitude, Longitude (Decimal Degrees)	42.56527, -90.72277
Number of Sites	2
County Name(s)	Dubuque
Field Work Date(s)	9/24/2025

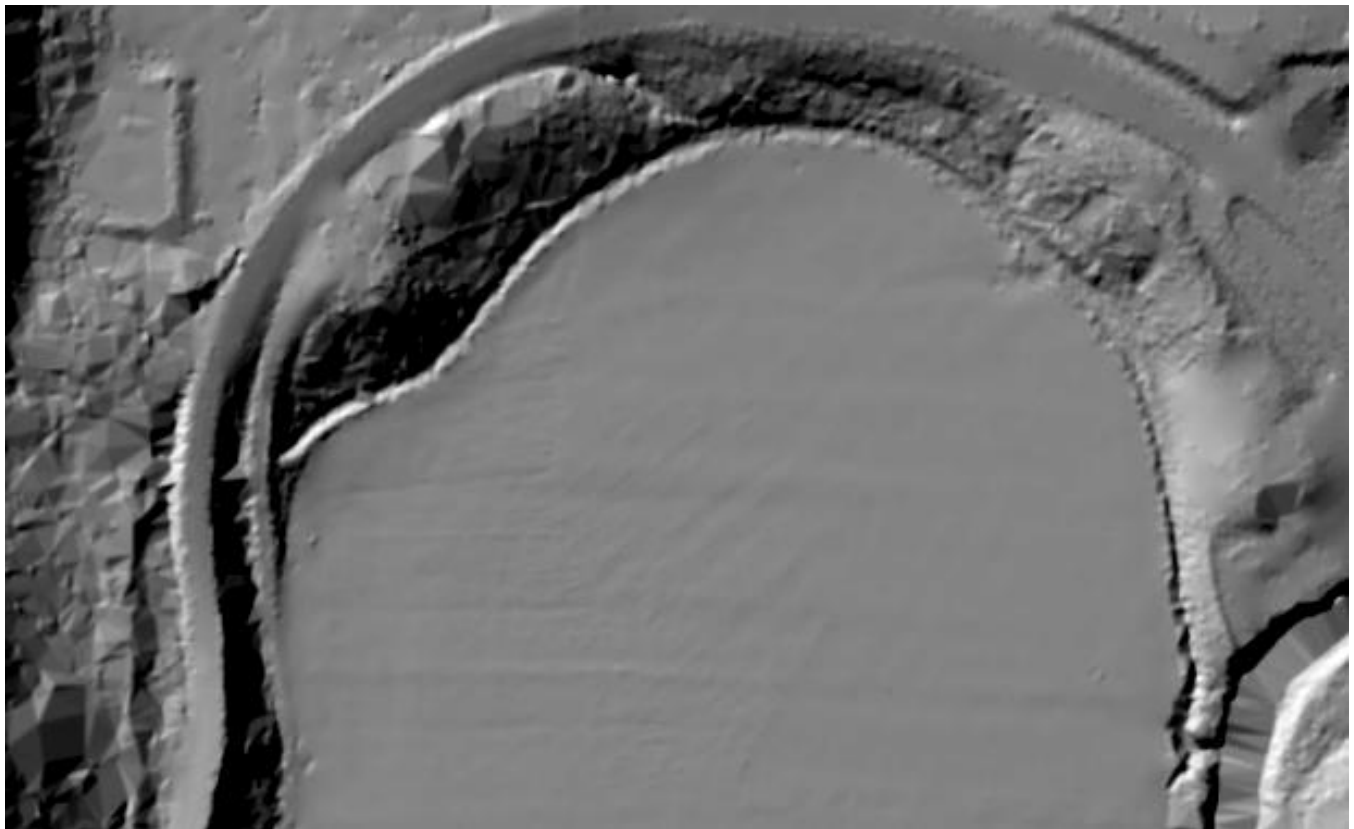
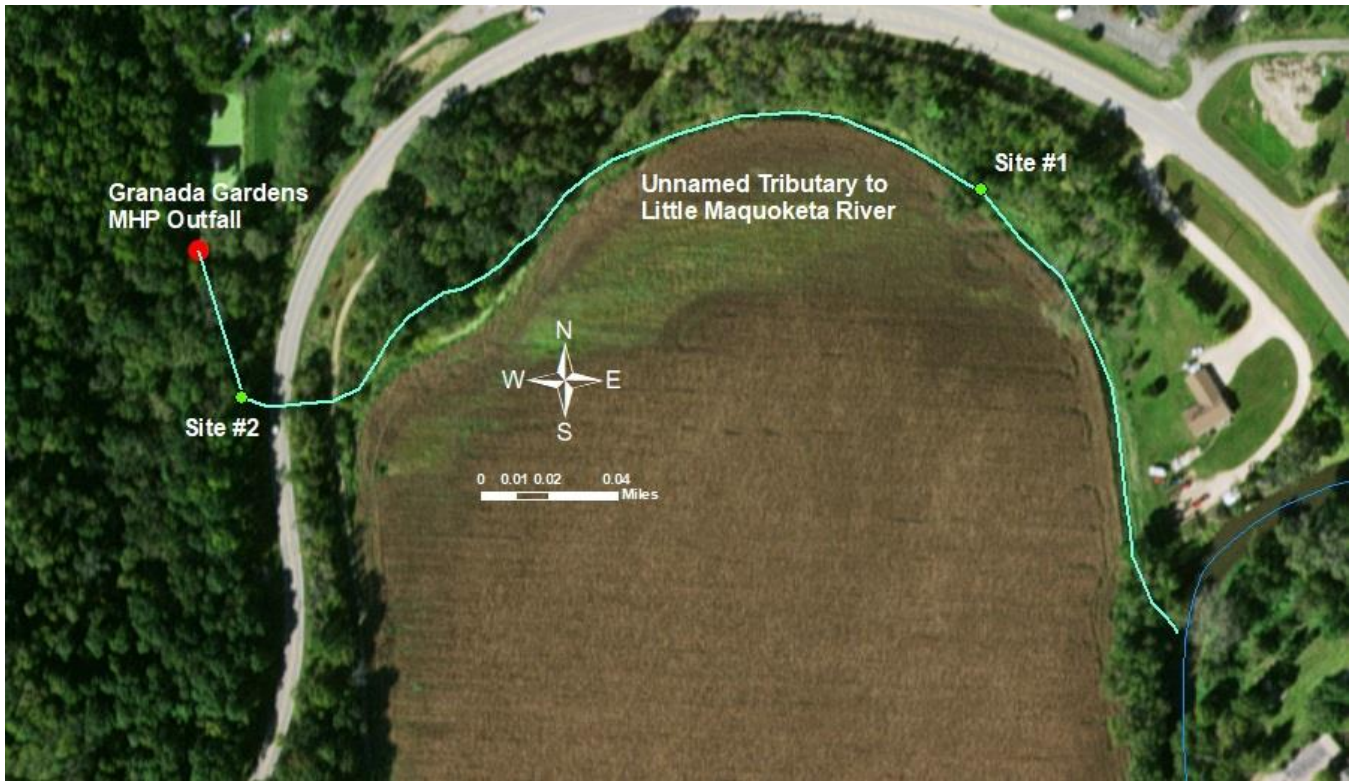
Flow

Gauge	At USGS Gage # 05413500 Grant River at Burton, WI
Description	USGS stream gage data for the area indicated stream flows above normal at the time of assessment.
U.S. Drought Monitor Intensity	None



Drought monitor at the time the fieldwork was conducted.

Attachments: Site Photos and Map



Site # 1

Description/location	Downstream site 42.56543, -90.71828
Water conditions	None
Average/max depths	None
Aquatic life present	None
Unusual conditions	None
Channel description	Dry, sandy stream bed.
Physical barriers/objects of significance	None
Human activity/evidence of recreation	None



Figure 1. Site #1 looking upstream.



Figure 2. Site #1 looking downstream.

Site # 2

Description/location	42.56465, -90.72255
Water conditions	Small pool
Average/max depths	Not measured
Aquatic life present	None
Unusual conditions	None
Channel description	Small pool of water near the culvert. Water did not flow out of it.
Physical barriers/objects of significance	The segment goes under a highway through a box culvert.
Human activity/evidence of recreation	None



Figure 3. Site #2 looking upstream.



Figure 4. Site #2 looking downstream.