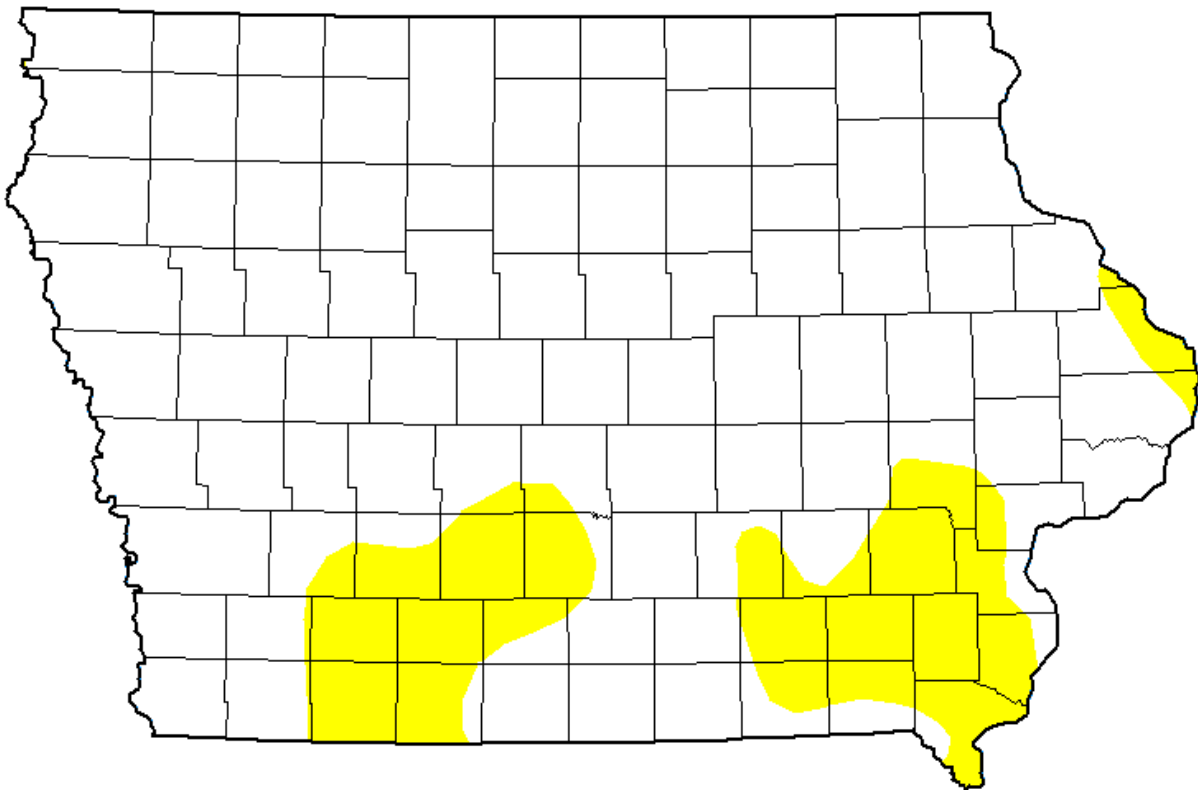


## General Use Field Evaluation

NPDES Facility and Permit Number	Floris, City of (Wapello Rural Water Assn.) (2622000)
NPDES Outfall Latitude, Longitude (Decimal Degrees)	40.87049, -92.34041
Water Body Name	Unnamed Tributary to Soap Creek
Segment Description	Mouth to Site #2
Segment Length (ft)	955
Segment Start (Downstream) Latitude, Longitude (Decimal Degrees)	40.87117, -92.34182
Segment End (Upstream) Latitude, Longitude (Decimal Degrees)	40.86967, -92.33957
Number of Sites	2
County Name(s)	Davis
Field Work Date(s)	9/25/2025

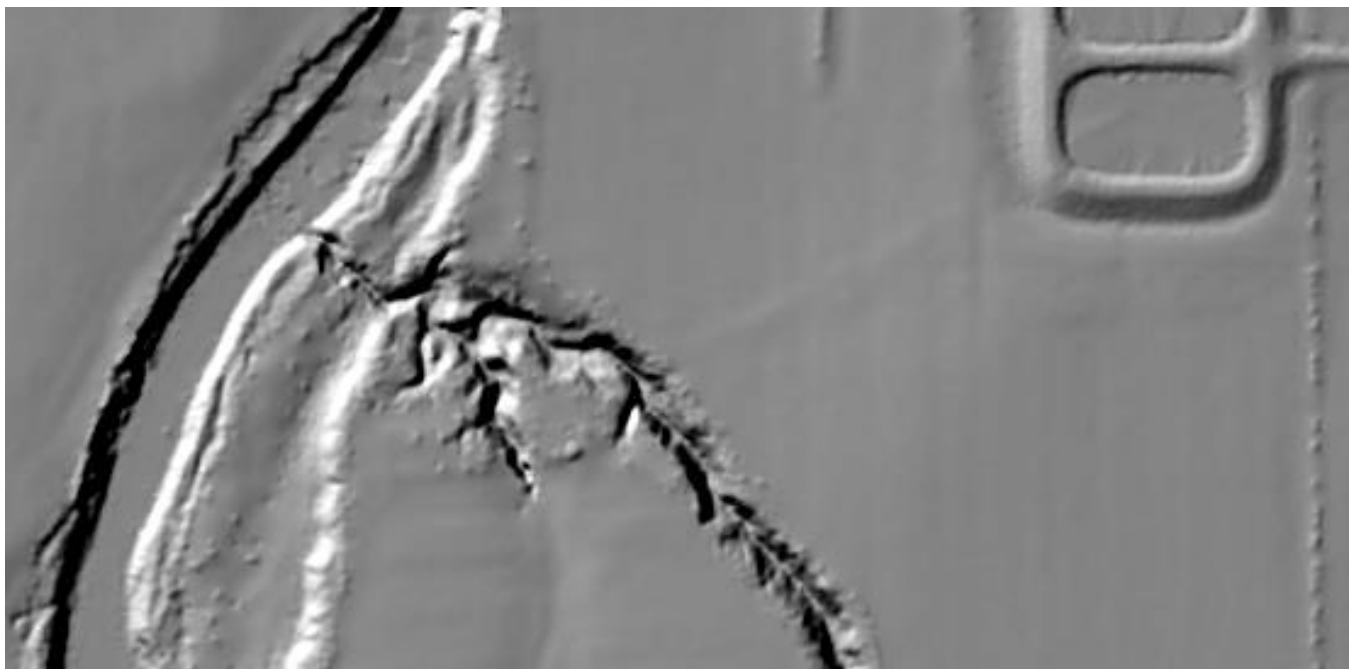
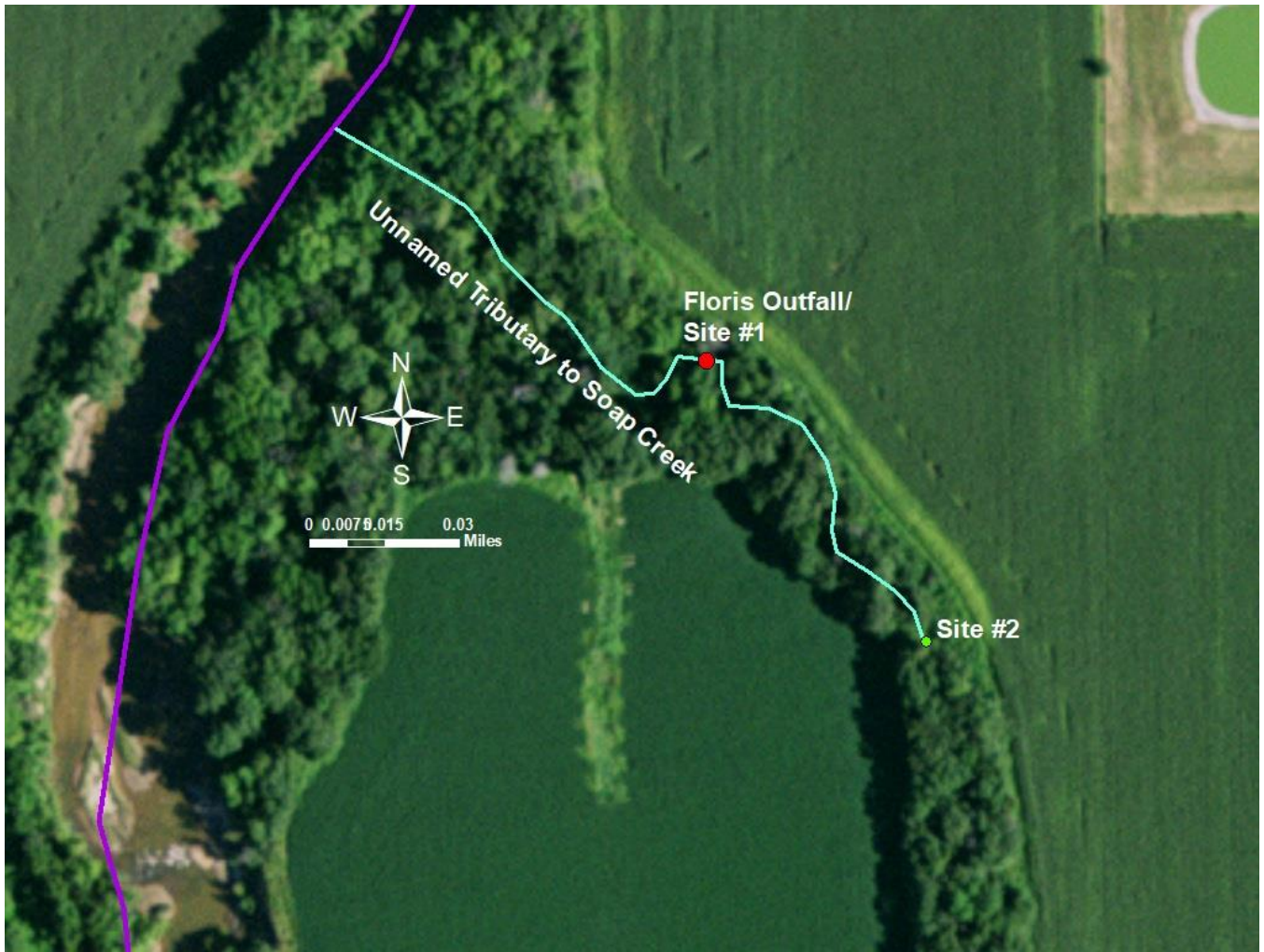
### Flow

Gauge	At USGS Gage # 05490500 Des Moines River at Keosauqua, Iowa
Description	USGS stream gage data for the area indicated stream flows were normal at the time of assessment.
U.S. Drought Monitor Intensity	D0 (Abnormally Dry)



Drought monitor at the time the fieldwork was conducted.

Attachments: Site Photos and Map



### Site # 1

<b>Description/location</b>	Outfall 40.87049, -92.34041
<b>Water conditions</b>	Small trickle
<b>Average/max depths</b>	<2 inches
<b>Aquatic life present</b>	None observed
<b>Unusual conditions</b>	None
<b>Channel description</b>	Steep ravine
<b>Physical barriers/objects of significance</b>	None
<b>Human activity/evidence of recreation</b>	None



Figure 1. Site #1. Facility's outfall into Unnamed Tributary.



**Figure 2. Site #1 looking upstream.**



**Figure 3. Site #1 looking downstream.**

### Site # 2

<b>Description/location</b>	Upstream site. 40.86967, -92.33957
<b>Water conditions</b>	Small trickle
<b>Average/max depths</b>	<2 inches
<b>Aquatic life present</b>	None observed
<b>Unusual conditions</b>	None
<b>Channel description</b>	Steep ravine
<b>Physical barriers/objects of significance</b>	None
<b>Human activity/evidence of recreation</b>	None



Figure 4. Site #2 looking upstream.



**Figure 5. Site #2 looking downstream.**