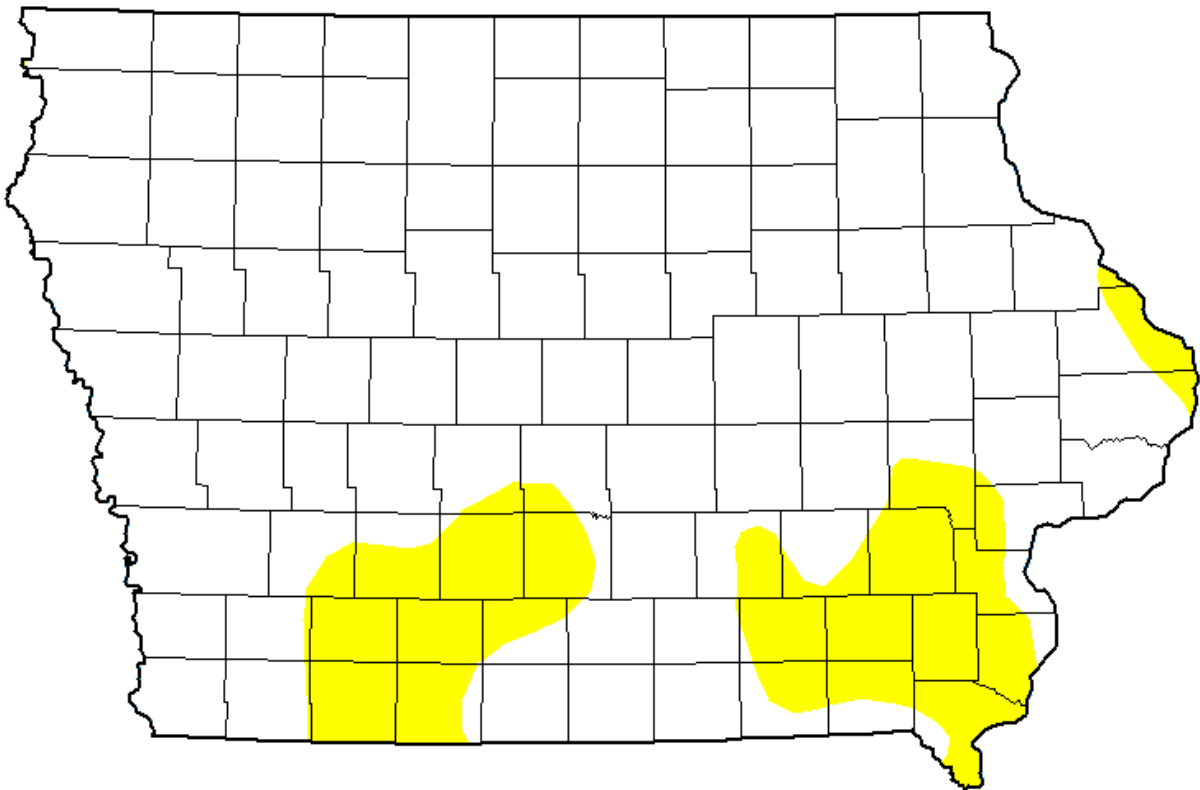


General Use Field Evaluation

NPDES Facility and Permit Number	Iowa DOT Rest Area #34 I35 Lamoni (2700902)
NPDES Outfall Latitude, Longitude (Decimal Degrees)	40.65928, -93.85714
Water Body Name	Unnamed Tributary to Grand River
Segment Description	Mouth to Iowa DOT Rest Area #34 I35 Lamoni outfall
Segment Length (ft)	136
Segment Start (Downstream) Latitude, Longitude (Decimal Degrees)	40.65927, -93.85714
Segment End (Upstream) Latitude, Longitude (Decimal Degrees)	40.65892, -93.85727
Number of Sites	2
County Name(s)	Decatur
Field Work Date(s)	9/25/2025

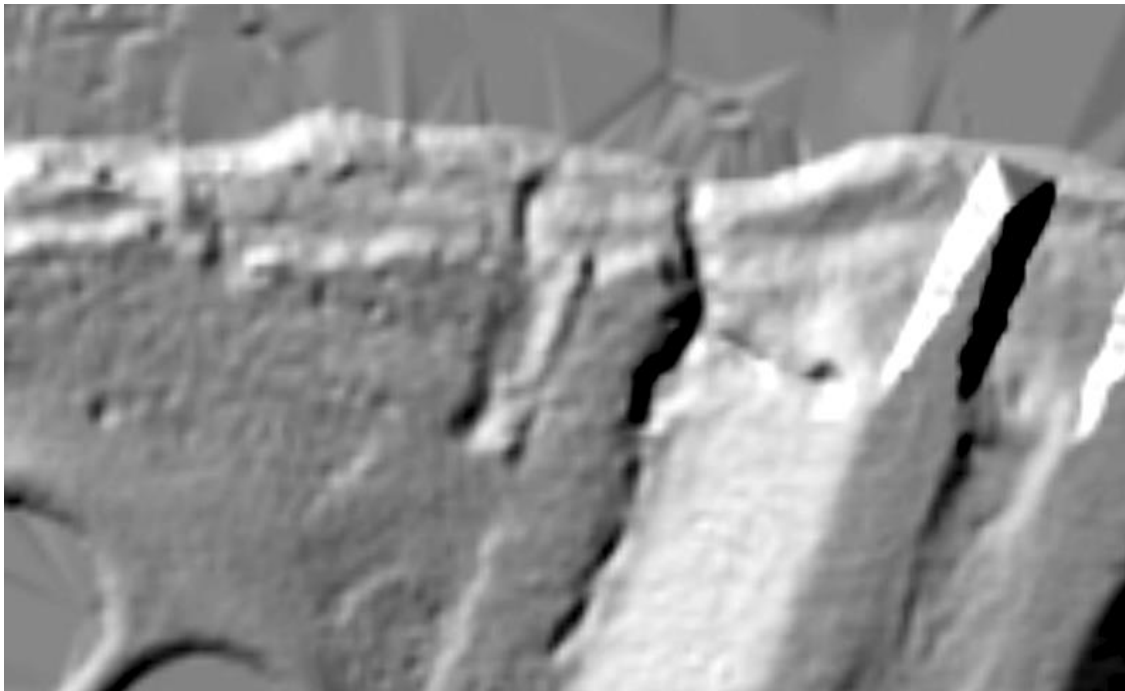
Flow

Gauge	At USGS Gage # 06898000 Thompson River at Davis City, Iowa
Description	USGS stream gage data for the area indicated stream flows were normal at the time of assessment.
U.S. Drought Monitor Intensity	None



Drought monitor at the time the fieldwork was conducted.

Attachments: Site Photos and Map



Site # 1

Description/location	40.65927, -93.85714
Water conditions	Very small amount of flow. All water present appeared to be discharged effluent.
Average/max depths	Not measured
Aquatic life present	None observed
Unusual conditions	None
Channel description	Small, manmade channel leading from outfall to receiving stream.
Physical barriers/objects of significance	None
Human activity/evidence of recreation	Not easily accessible to the public.



Figure 1. Site #1 showing the confluence of the segment being designated with the receiving stream.

Site # 2

Description/location	Outfall 40.65892, -93.85727
Water conditions	Very small amount of flow. All water present appeared to be discharged effluent.
Average/max depths	Not measured
Aquatic life present	None observed
Unusual conditions	None
Channel description	Small, manmade channel leading from outfall to receiving stream.
Physical barriers/objects of significance	None
Human activity/evidence of recreation	Not easily accessible to the public.



Figure 2. Site #2 looking upstream at the outfall.



Figure 3. Site #2 looking downstream from the outfall