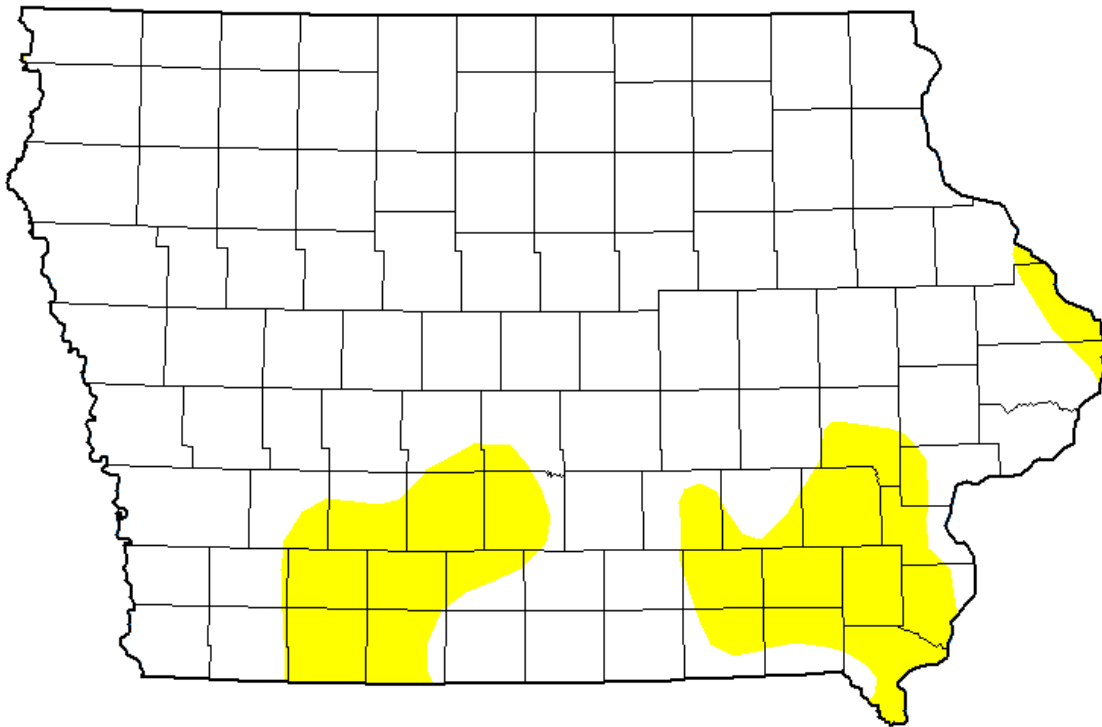


General Use Field Evaluation

NPDES Facility and Permit Number	Pilot Travel Centers #496 (1600201)
NPDES Outfall Latitude, Longitude (Decimal Degrees)	41.64515, -91.14809
Water Body Name	Unnamed Tributary to Cedar River
Segment Description	Mouth to Pilot Travel Centers #496 STP outfall
Segment Length (ft)	3,708
Segment Start (Downstream) Latitude, Longitude (Decimal Degrees)	41.64496, -91.13484
Segment End (Upstream) Latitude, Longitude (Decimal Degrees)	41.64515, -91.14809
Number of Sites	4
County Name(s)	Cedar
Field Work Date(s)	9/26/2025

Flow

Gauge	At USGS Gage # 05465000 Cedar River near Conesville, Iowa
Description	USGS stream gage data for the area indicated stream flows were above normal at the time of assessment.
U.S. Drought Monitor Intensity	None



Drought monitor at the time the fieldwork was conducted.

Attachments: Site Photos and Map

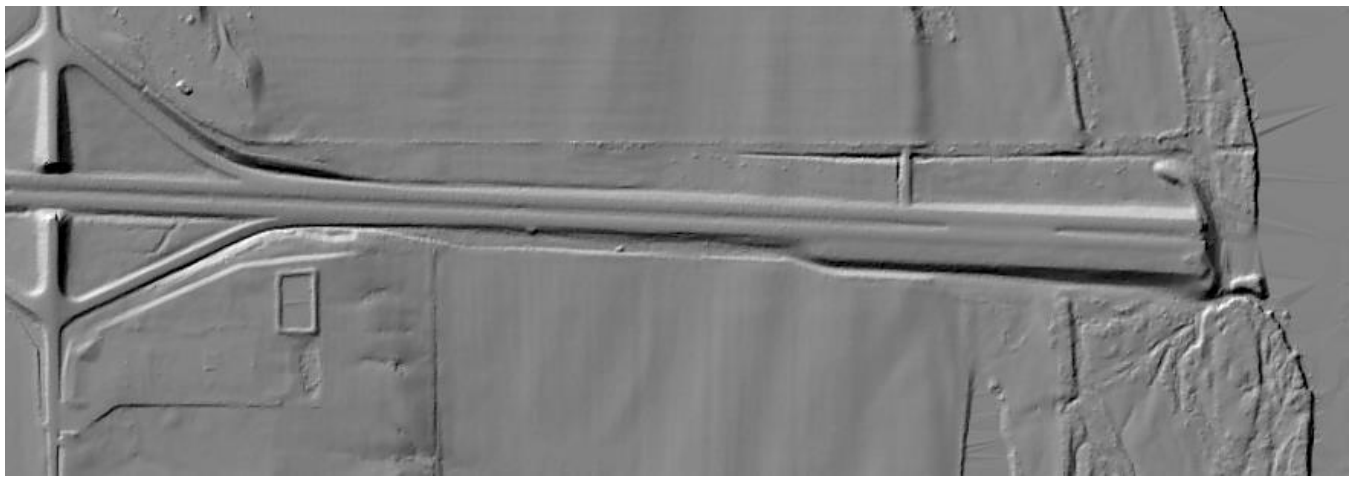




Figure 1. Outfall.



Figure 2. Outfall looking upstream from the outfall.



Figure 3. Outfall looking downstream from the outfall.

Site # 1

Description/location	41.64506, -91.13797
Water conditions	None
Average/max depths	None
Aquatic life present	None
Unusual conditions	None
Channel description	Manmade, roadside ditch. Dry, poorly defined channel. Overgrown with grass and willows.
Physical barriers/objects of significance	None
Human activity/evidence of recreation	None



Figure 4. Site #1 Looking upstream



Figure 5. Site #1 Looking downstream.

Site # 2

Description/location	41.64519, -91.13908
Water conditions	None
Average/max depths	None
Aquatic life present	None
Unusual conditions	None
Channel description	Manmade, roadside ditch. Dry, poorly defined channel. Overgrown with grass.
Physical barriers/objects of significance	None
Human activity/evidence of recreation	None



Figure 6. Site #2 Looking upstream.



Figure 7. Site #2 Looking downstream.

Site # 3

Description/location	41.64555, -91.14555
Water conditions	None
Average/max depths	None
Aquatic life present	None
Unusual conditions	None
Channel description	Manmade, roadside ditch. Dry, poorly defined channel. Overgrown with grass and willows.
Physical barriers/objects of significance	None
Human activity/evidence of recreation	None



Figure 8. Site #3 Looking upstream.



Figure 9. Site #3 Looking downstream.

Site # 4

Description/location	41.64563, -91.14800
Water conditions	None
Average/max depths	None
Aquatic life present	None
Unusual conditions	None
Channel description	Manmade, roadside ditch. Wet soil, with cattails growing. No visible channel.
Physical barriers/objects of significance	None
Human activity/evidence of recreation	None



Figure 10. Site #4 Looking upstream.



Figure 11. Site #4 Looking downstream.