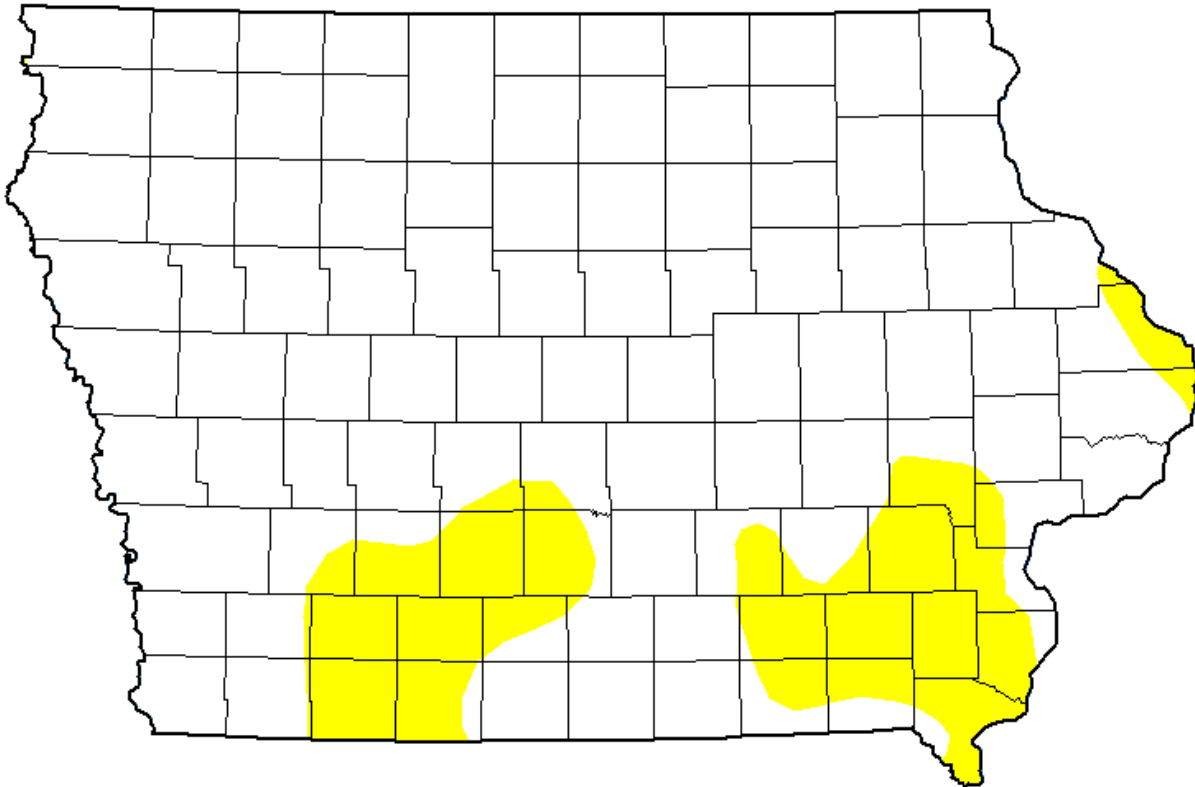


## General Use Field Evaluation

NPDES Facility and Permit Number	Bennett, City of WTP (1603000)
NPDES Outfall Latitude, Longitude (Decimal Degrees)	41.74113, -90.97612
Water Body Name	Unnamed Tributary to Bennett Creek
Segment Description	Mouth to Intersection of 4th and Cedar Street
Segment Length (ft)	2,300
Segment Start (Downstream) Latitude, Longitude (Decimal Degrees)	41.73500, -90.97683
Segment End (Upstream) Latitude, Longitude (Decimal Degrees)	41.74113, -90.97612
Number of Sites	2
County Name(s)	Cedar
Field Work Date(s)	9/26/2025

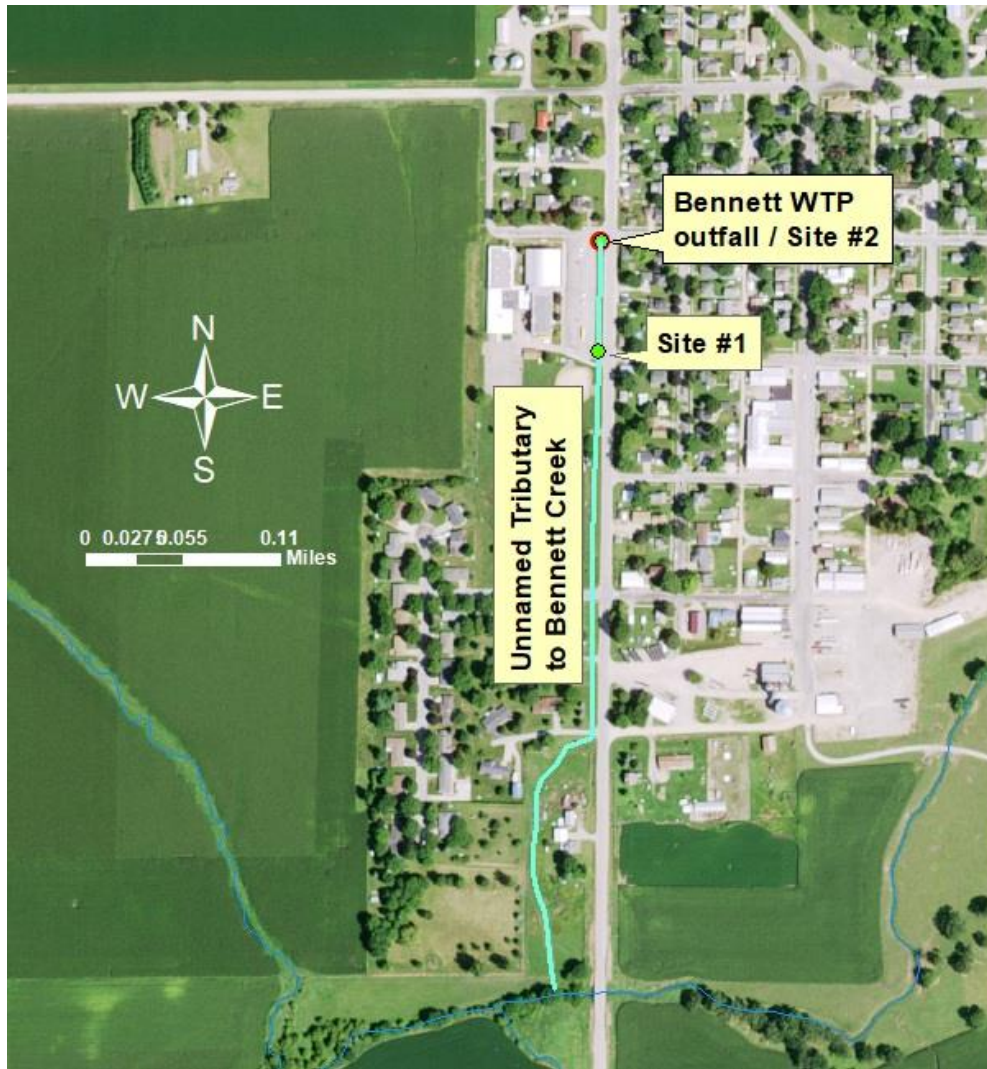
### Flow

Gauge	At USGS Gage # 05465000 Cedar River near Conesville, Iowa
Description	USGS stream gage data for the area indicated stream flows were above normal at the time of assessment.
U.S. Drought Monitor Intensity	None



Drought monitor at the time the fieldwork was conducted.

Attachments: Site Photos and Map



### Site # 1

<b>Description/location</b>	41.74021, -90.97619 Intersection of 3rd and Cedar Street
<b>Water conditions</b>	None
<b>Average/max depths</b>	None
<b>Aquatic life present</b>	None
<b>Unusual conditions</b>	None
<b>Channel description</b>	Dry drainage ditch.
<b>Physical barriers/objects of significance</b>	None
<b>Human activity/evidence of recreation</b>	The entire segment is located within the city limits, with the upper reach being in front of a school. However, there are no signs of aquatic recreation.



Figure 1. Site #1 looking upstream.



**Figure 2. Site #1 looking downstream.**

### Site # 2

<b>Description/location</b>	41.74113, -90.97612 Intersection of 4th and Cedar Street Outfall
<b>Water conditions</b>	None
<b>Average/max depths</b>	None
<b>Aquatic life present</b>	None
<b>Unusual conditions</b>	None
<b>Channel description</b>	Dry drainage ditch.
<b>Physical barriers/objects of significance</b>	None
<b>Human activity/evidence of recreation</b>	The entire segment is located within the city limits, with the upper reach being in front of a school. However, there are no signs of aquatic recreation.



Figure 3. Site #2 Looking upstream at the outfall.



**Figure 4. Site #2 Looking downstream from the outfall.**