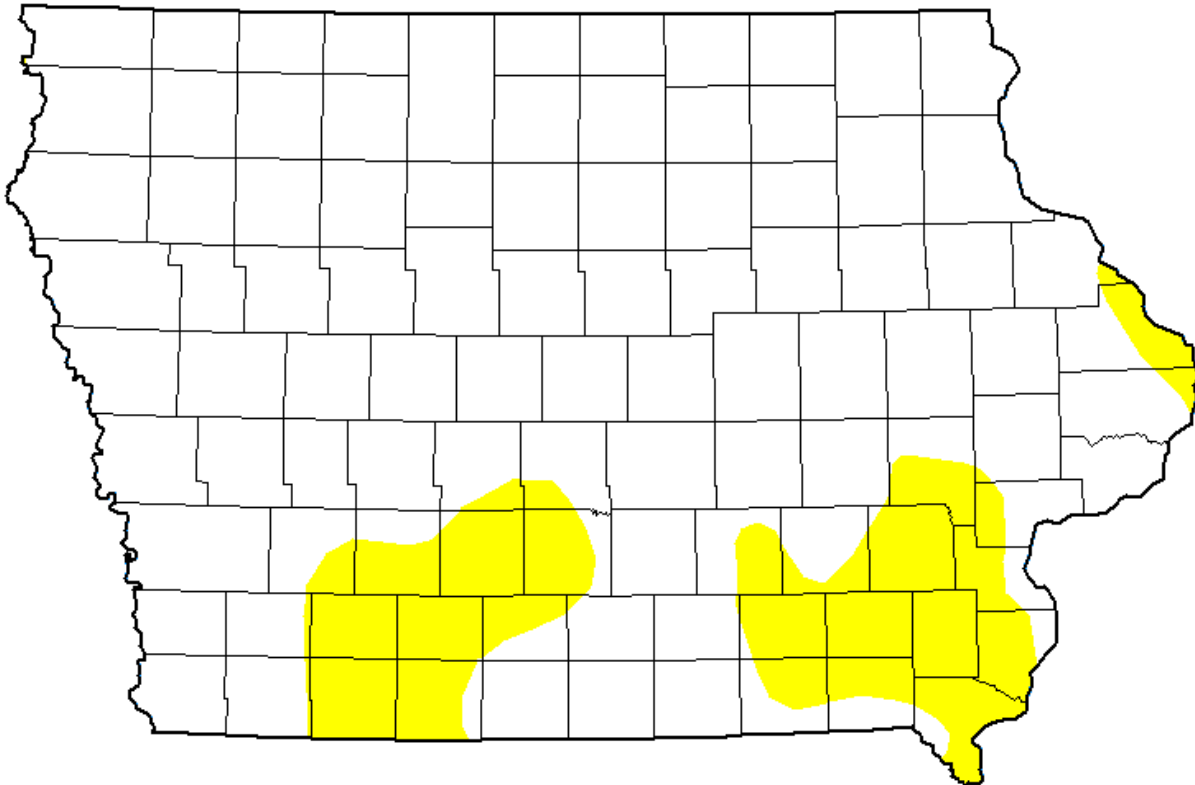


General Use Field Evaluation

NPDES Facility and Permit Number	Advanced Heat Treat Corporation - Waterloo (0790123)
NPDES Outfall Latitude, Longitude (Decimal Degrees)	42.53850, -92.35935
Water Body Name	Unnamed Tributary to Brinker Lake
Segment Description	Mouth to Advanced Heat Treat Corporation - Waterloo outfall
Segment Length (ft)	7463
Segment Start (Downstream) Latitude, Longitude (Decimal Degrees)	42.53079, -92.37844
Segment End (Upstream) Latitude, Longitude (Decimal Degrees)	42.53849, -92.35928
Number of Sites	4
County Name(s)	Black Hawk
Field Work Date(s)	9/24/2025

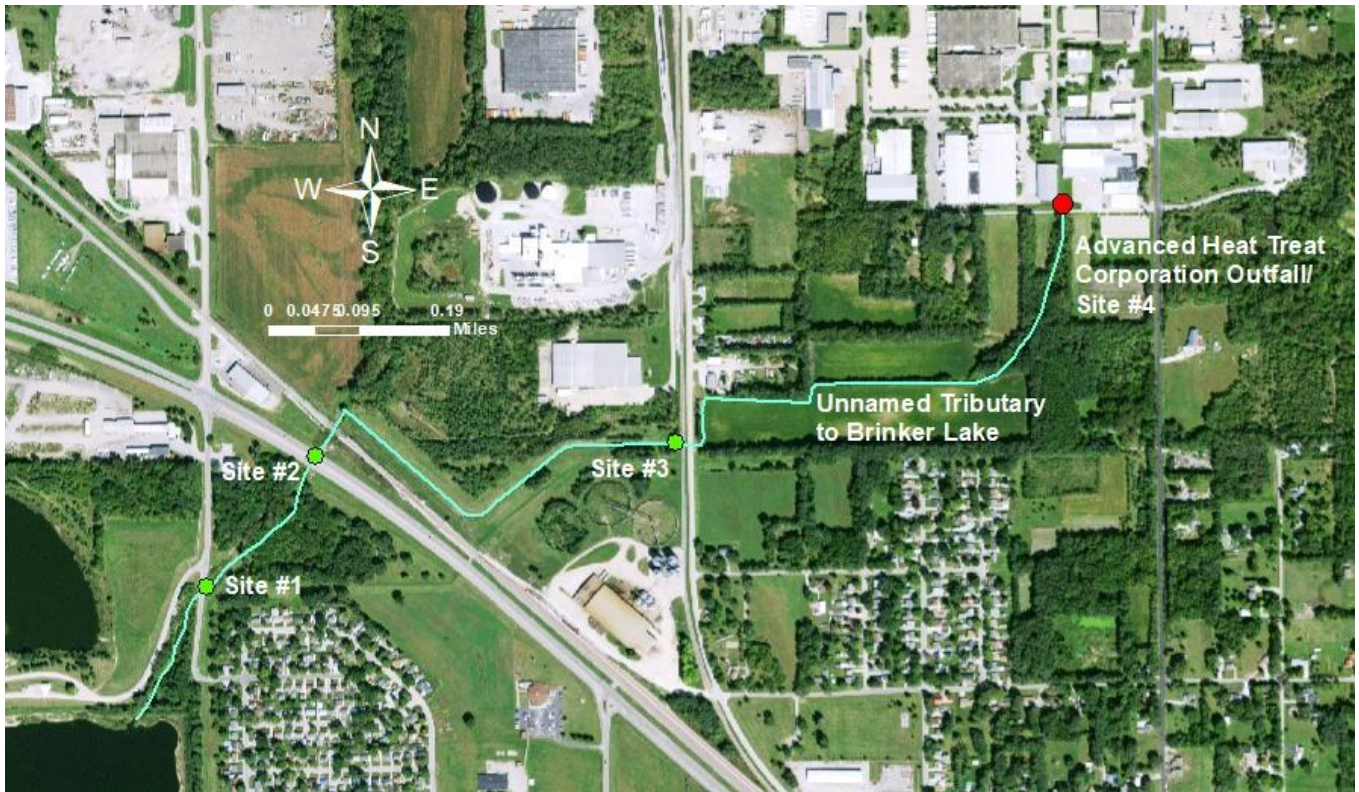
Flow

Gauge	At USGS Gage # 05463050 Cedar River at Cedar Falls, Iowa
Description	USGS stream gage data for the area indicated stream flows were normal at the time of assessment.
U.S. Drought Monitor Intensity	None



Drought monitor at the time the fieldwork was conducted.

Attachments: Site Photos and Map



Site # 1

Description/location	42.53273, -92.37700
Water conditions	Some stagnant pools with no flow.
Average/max depths	Not measured
Aquatic life present	None observed
Unusual conditions	None
Channel description	Large drainage ditch.
Physical barriers/objects of significance	None
Human activity/evidence of recreation	None observed



Figure 1. Site #1 looking upstream.



Figure 2. Site #1 looking downstream.

Site # 2

Description/location	42.53478, -92.37473
Water conditions	Some stagnant pools with no flow.
Average/max depths	Not measured
Aquatic life present	None observed
Unusual conditions	None
Channel description	Large drainage ditch.
Physical barriers/objects of significance	None
Human activity/evidence of recreation	None observed



Figure 3. Site #2 looking upstream.



Figure 4. Site #2 looking downstream.

Site # 3

Description/location	42.53491, -92.36732
Water conditions	Dry channel.
Average/max depths	Not measured
Aquatic life present	None observed
Unusual conditions	None
Channel description	Large drainage ditch.
Physical barriers/objects of significance	None
Human activity/evidence of recreation	None observed



Figure 5. Site #3 looking upstream.



Figure 6. Site #3 looking downstream.

Site # 4

Description/location	42.53850, -92.35935 Outfall
Water conditions	Cooling water was being discharged at the time of the visit.
Average/max depths	Not measured
Aquatic life present	None observed
Unusual conditions	None
Channel description	Large drainage ditch.
Physical barriers/objects of significance	None
Human activity/evidence of recreation	None observed



Figure 7. Site #4 looking upstream at outfall.



Figure 8. Site #4 looking downstream.