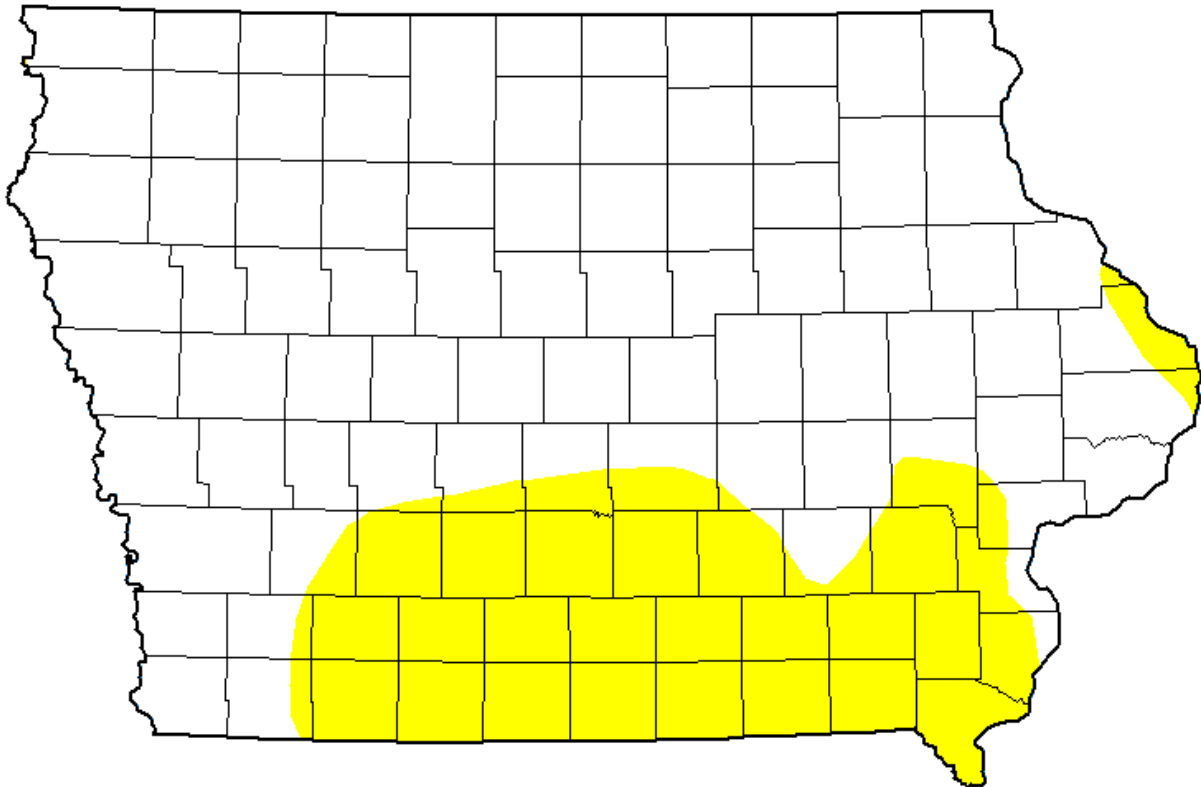


General Use Field Evaluation

NPDES Facility and Permit Number	Madrid, City of WTP (0848002)
NPDES Outfall Latitude, Longitude (Decimal Degrees)	41.87466, -93.85977
Water Body Name	Unnamed Tributary to Des Moines River
Segment Description	Mouth to headwaters
Segment Length (ft)	0.8 miles
Segment Start (Downstream) Latitude, Longitude (Decimal Degrees)	41.87496, -93.86501
Segment End (Upstream) Latitude, Longitude (Decimal Degrees)	41.87731, -93.85450
Number of Sites	2
County Name(s)	Boone
Field Work Date(s)	9/16/2025

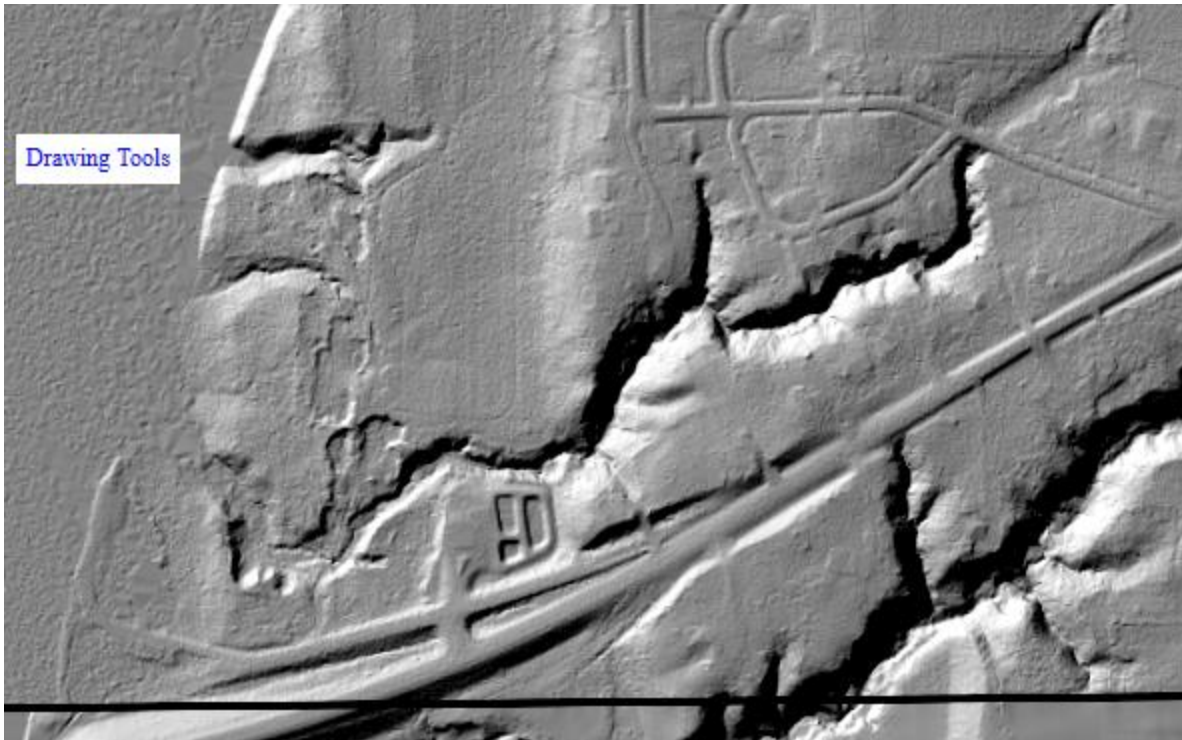
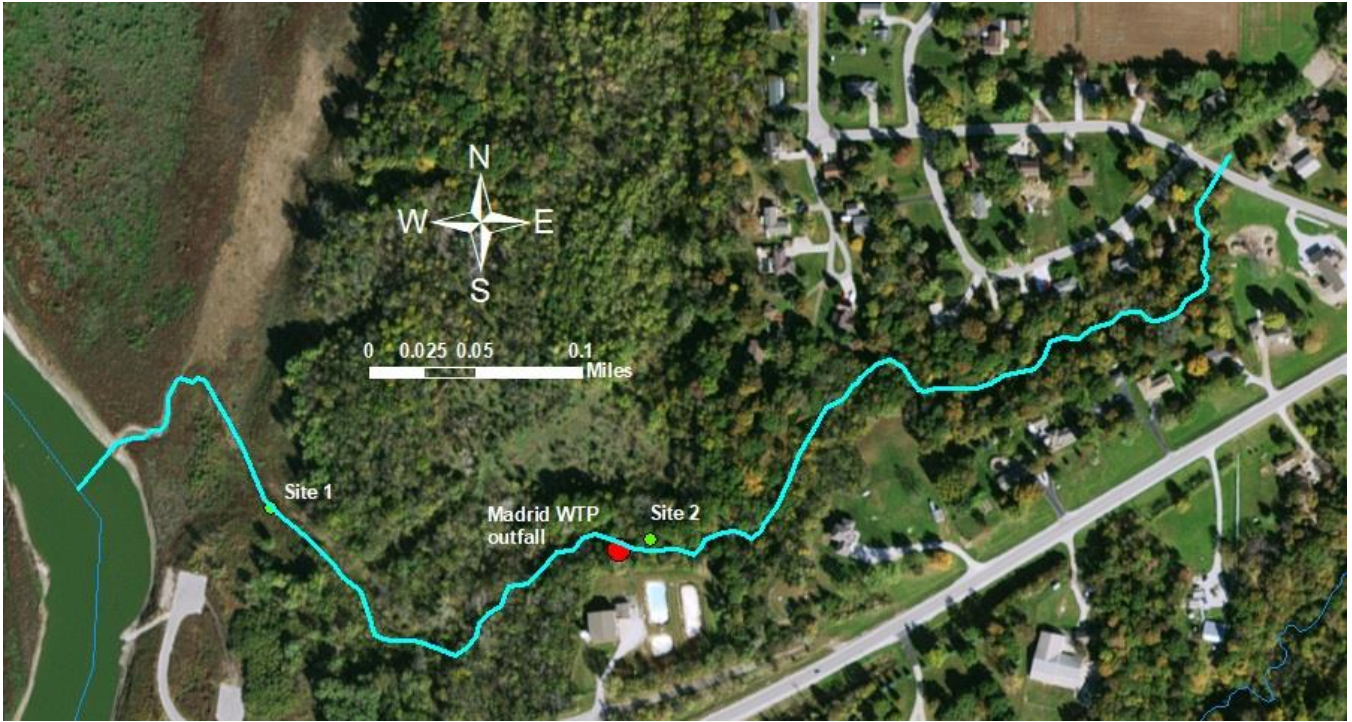
Flow

Gauge	At USGS Gage # 05481300 Des Moines River near Stratford, Iowa
Description	USGS stream gage data for the area indicated stream flows were normal at the time of assessment.
U.S. Drought Monitor Intensity	None



Drought monitor at the time the fieldwork was conducted.

Attachments: Site Photos and Map



Site # 1

Description/location	Downstream sampling site. 41.87485, -93.86324
Water conditions	None
Average/max depths	None
Aquatic life present	None
Unusual conditions	None
Channel description	Small channel with little flow, overgrown with grass. Sandy substrate.
Physical barriers/objects of significance	None
Human activity/evidence of recreation	None



Figure 1. Site 1 looking upstream.

Site # 2

Description/location	Discharge point and upstream sampling site. 41.87466, -93.85977
Water conditions	None
Average/max depths	None
Aquatic life present	None
Unusual conditions	None
Channel description	Small channel with little flow. Sandy substrate with some cobble.
Physical barriers/objects of significance	None
Human activity/evidence of recreation	None



Figure 2. Outfall.



Figure 3. Site 2 looking upstream.