

## Use Attainability Analysis

<b>1 Water Body Name</b>	Brush Creek
<b>2 Segment Description</b>	Mouth to confluence with unnamed tributary
<b>3 Segment Length (mi)</b>	3.0
<b>4 Drainage Area (sq. mi.)</b>	11.3
<b>5 Segment Start Latitude, Longitude (DD)</b>	40.65168, -92.77175
<b>6 Segment End Latitude, Longitude (DD)</b>	40.67810, -92.79481
<b>7 Route of Flow (Next Downstream Adopted Designated Use)</b>	Brush Creek (A3, proposed, BWW2, existing) to Pigeon Creek (A1, BWW2, pending) to Chariton River (A1, BWW1, HH)
<b>8 NPDES Facility and Permit Number (If Applicable)</b>	N/A - Field work was collected when reviewing the route of flow for Exline STP (0426001).
<b>9 Sample Site ID(s)</b>	1230-3
<b>10 Segment County Name(s)</b>	Appanoose
<b>11 Field Work Date(s)</b>	9/29/2015

### 12 Aquatic Life Use Attainability Analysis - Conclusion

<b>Recommended Highest Attainable Use: Aquatic Life Use</b>	N/A
---	-----

### 13 Recreational Use Attainability Analysis - Conclusion

<b>Recommended Highest Attainable Use: Recreational Use</b>	A3
<b>40 CFR 131.10(g)(2) (Flow)</b>	The natural low flow conditions and water levels of the stream segment prevent an A1 recreational use (see Site Observations Table). An A1 designation requires the ability for full body immersion. However, this stream segment is in close proximity to a population center/park. Therefore, the A3 recreational use is recommended.

### 14 Flow

Field Work Date	Description
9/29/2015	<a href="#">USGS stream gage data</a> for the area indicated stream flows were normal at the time of assessment.

### Use Attainability Analysis - Data

#### Site Observations

Use	Site parameter	Site ID #1230-3
AL/R	15 Latitude, Longitude (DD)	40.65409, -92.77244
AL/R	16 Average Depth (in)	2
AL/R	17 Maximum Depth (in)	13
AL/R	18 Stream Width (ft)	10.5
AL/R	19 Pools Observed?	Yes
AL only	20 Non-Game Fish Present and Counts (Species: Number)	N/A
	21 Game Fish Present and Counts (Species (Size Range): Number)	N/A
	22 Stream Habitat (See also: #29 Site Photos)	N/A
R only	23 Evidence of Use for Primary Contact Recreation? (Yes*/No)	No
	24 Evidence of Use by Children? (Yes*/No)	Local resident states children play in the creek.

Use	Site parameter	Site ID #1230-3
	<b>25 Evidence of Use for Secondary Contact Recreation? (Yes*/No)</b>	Wading/ walking, fishing/ seining/ minnow trapping (public comment)
<b>AL/R</b>	<b>26 Additional Description</b>	Most of the segment is in Sedan Bottoms Wildlife Management Area.

AL = Aquatic Life

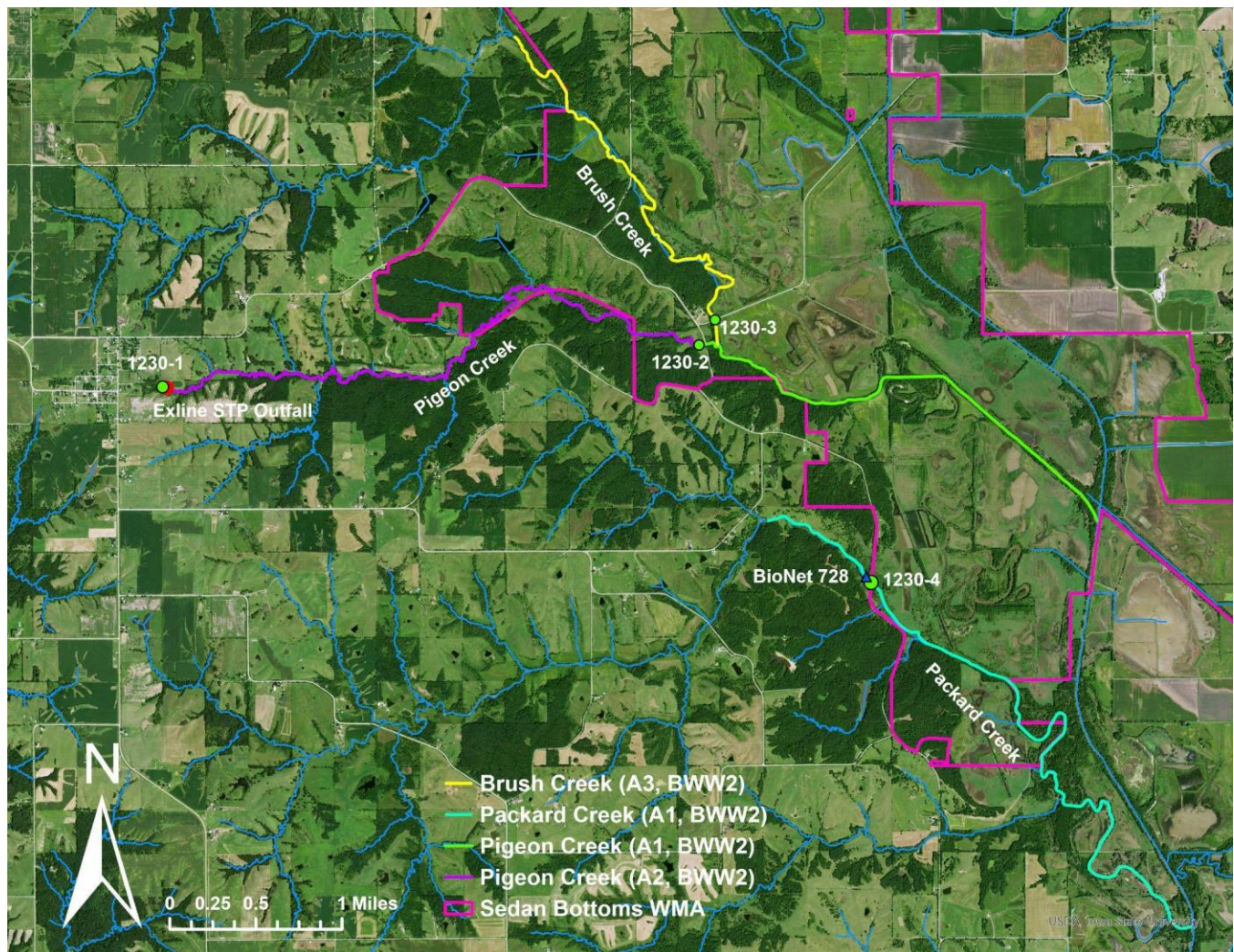
R = Recreation

\*If yes, elaborate.

## 27 Supplemental Data

Desktop review verified that the UAA field work is still valid.

## 28 Map of Segment, Outfall, and Site(s)





## 29 Site Photos



**Figure 1. 1230-3 Recreational use assessment midpoint looking upstream.**



**Figure 2. 1230-3 Recreational use assessment midpoint looking downstream.**





**Figure 3. 1230-3 Recreational use assessment upstream looking upstream.**



**Figure 4. 1230-3 Recreational use assessment upstream looking downstream.**





**Figure 5. 1230-3 Recreational use assessment downstream looking upstream.**



**Figure 6. 1230-3 Recreational use assessment downstream looking downstream.**



Figure 7. 1230-3 Sign.