

Use Attainability Analysis

1 Water Body Name	Middle Branch Blue Earth River
2 Segment Description	Iowa-Minnesota state line to confluence with Drainage Ditch Number 7
3 Segment Length (mi)	10.4
4 Drainage Area (sq. mi.)	88.2
5 Segment Start Latitude, Longitude (DD)	43.50011, -94.10688
6 Segment End Latitude, Longitude (DD)	43.40961, -94.04223
7 Route of Flow (Next Downstream Adopted Designated Use)	Middle Branch Blue Earth River (A2, proposed, BW2, existing)
8 NPDES Facility and Permit Number (If Applicable)	Buffalo Center, City of STP (9506001)
9 Sample Site ID(s)	1287-2, 1287-3
10 Segment County Name(s)	Kossuth
11 Field Work Date(s)	9/14/2017

12 Aquatic Life Use Attainability Analysis - Conclusion

Recommended Highest Attainable Use: Aquatic Life Use	N/A
---	-----

13 Recreational Use Attainability Analysis - Conclusion

Recommended Highest Attainable Use: Recreational Use	A2
40 CFR 131.10(g)(2) (Flow)	The natural low flow conditions and water levels of the stream segment prevent the attainment of an A1 recreational use (see Site Observations Table). An A1 designation requires the ability for full body immersion. Therefore, the highest attainable recreational use is A2.

14 Flow

Field Work Date	Description
9/14/2017	USGS stream gage data for the area indicated stream flows were normal at the time of assessment.

Use Attainability Analysis - Data

Site Observations

Use	Site parameter	Site ID # 1287-2
AL/R	15 Latitude, Longitude (DD)	43.41437, -94.07007
AL/R	16 Average Depth (in)	3
AL/R	17 Maximum Depth (in)	14.4
AL/R	18 Stream Width (ft)	17
AL/R	19 Pools Observed?	Yes
AL only	20 Non-Game Fish Present and Counts (Species: Number)	N/A
	21 Game Fish Present and Counts (Species (Size Range): Number)	N/A
	22 Stream Habitat (See also: #29 Site Photos)	N/A
R only	23 Evidence of Use for Primary Contact Recreation? (Yes*/No)	No
	24 Evidence of Use by Children? (Yes*/No)	No
	25 Evidence of Use for Secondary Contact Recreation? (Yes*/No)	No

Use	Site parameter	Site ID # 1287-2
AL/R	26 Additional Description	Few tires immediately downstream of the bridge.

Use	Site parameter	Site ID # 1287-3
AL/R	15 Latitude, Longitude (DD)	43.48787, -94.10785
AL/R	16 Average Depth (in)	3.5
AL/R	17 Maximum Depth (in)	13.2
AL/R	18 Stream Width (ft)	13
AL/R	19 Pools Observed?	Yes
AL only	20 Non-Game Fish Present and Counts (Species: Number)	N/A
	21 Game Fish Present and Counts (Species (Size Range): Number)	N/A
	22 Stream Habitat (See also: #29 Site Photos)	N/A
R only	23 Evidence of Use for Primary Contact Recreation? (Yes*/No)	No
	24 Evidence of Use by Children? (Yes*/No)	No
	25 Evidence of Use for Secondary Contact Recreation? (Yes*/No)	No
AL/R	26 Additional Description	Conservation easement signs stating no trespassing on both fields to the north of downstream.

AL = Aquatic Life

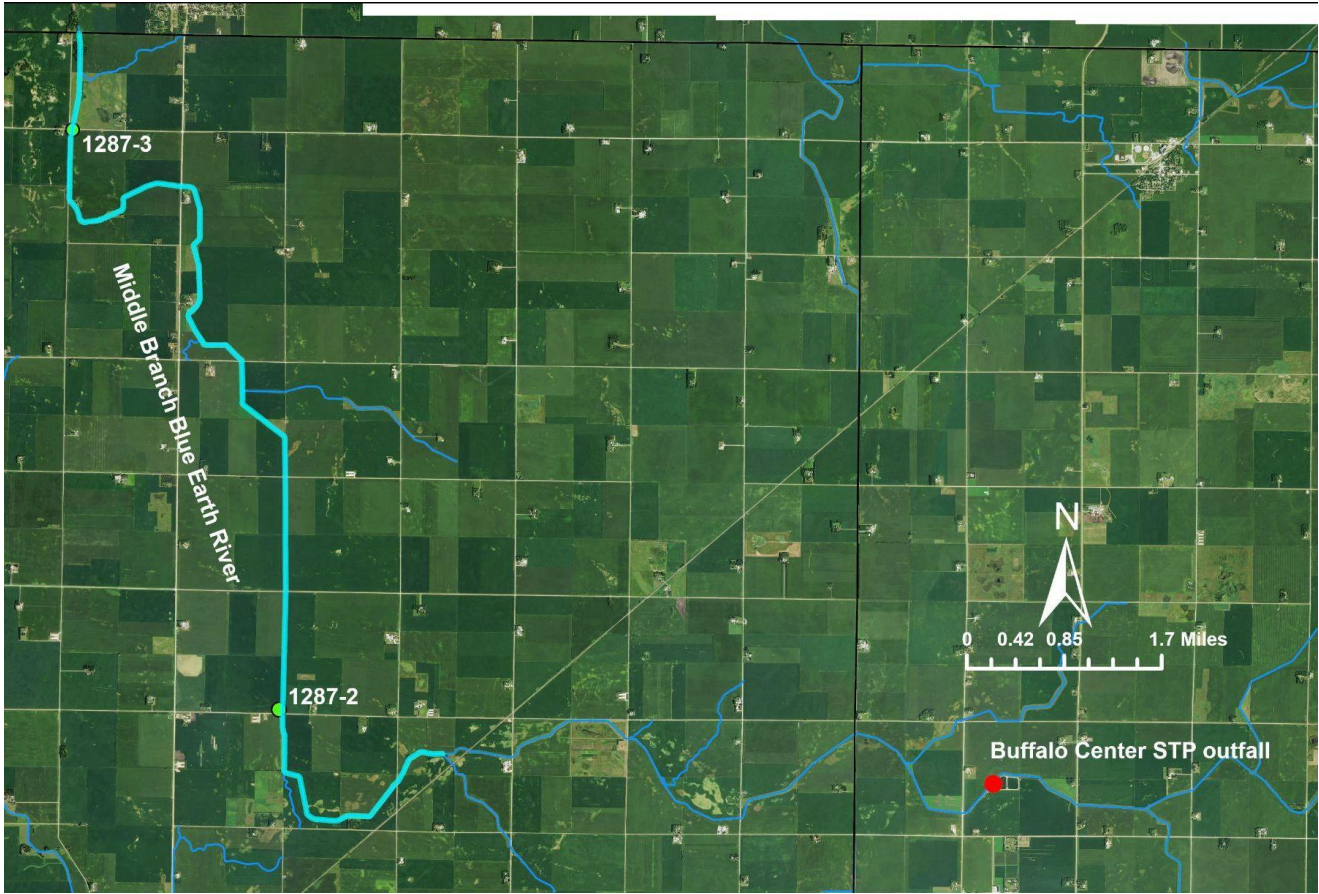
R = Recreation

*If yes, elaborate.

27 Supplemental Data

N/A

28 Map of Segment, Outfall, and Site(s)



29 Site Photos



Figure 1. 1287-2 Recreational use assessment midpoint looking upstream.



Figure 2. 1287-2 Recreational use assessment midpoint looking downstream.



Figure 3. 1287-2 Recreational use assessment upstream looking upstream.



Figure 4. 1287-2 Recreational use assessment upstream looking downstream.



Figure 5. 1287-2 Recreational use assessment downstream looking upstream.



Figure 6. 1287-2 Recreational use assessment downstream looking downstream.



Figure 7. 1287-3 Recreational use assessment midpoint looking upstream.



Figure 8. 1287-3 Recreational use assessment midpoint looking downstream.



Figure 9. 1287-3 Recreational use assessment upstream looking upstream.



Figure 10. 1287-3 Recreational use assessment upstream looking downstream.



Figure 11. 1287-3 Recreational use assessment downstream looking upstream.



Figure 12. 1287-3 Recreational use assessment downstream looking downstream.