

Use Attainability Analysis

1 Water Body Name	Ninemile Creek
2 Segment Description	Mouth to headwaters
3 Segment Length (mi)	15.7
4 Drainage Area (sq. mi.)	37.2
5 Segment Start Latitude, Longitude (DD)	41.24703, -94.27140
6 Segment End Latitude, Longitude (DD)	41.27553, -94.47427
7 Route of Flow (Next Downstream Adopted Designated Use)	Ninemile Creek (A2, BWW2, proposed) to Thompson River (Grand River) (A2, BWW2)
8 NPDES Facility and Permit Number (If Applicable)	Orient STP (SIRWA) (0160001)
9 Sample Site ID(s)	1236-4, 1236-5, 1236-6
10 Segment County Name(s)	Adair
11 Field Work Date(s)	7/6/2016

12 Aquatic Life Use Attainability Analysis - Conclusion

Recommended Highest Attainable Use: Aquatic Life Use	BWW2
40 CFR 131.10(g)(2) (Flow)	The natural low flow conditions of the stream segment are insufficient to create the habitat necessary to support a viable community of game fish. A lack of age ranges and diversity of game fish species indicates a non-reproducing population (see Site Observations Table). A BWW1 designation requires multiple species and age ranges to be viable. Therefore, the highest attainable aquatic life use for this stream segment is BWW2.
40 CFR 131.10(g)(5) (Physical Conditions)	Physical conditions related to the natural features of the water body are insufficient to support a viable community of game fish. Stream width (for 1236-4) and maximum depth (for 1236-5 and 1236-6) fall within the "consistently negative" game fish indicator responses (see Table 2 in Appendix I). A lack of age ranges and diversity of game fish species indicates a non-reproducing population (see Site Observations Table). A BWW1 designation requires multiple species and age ranges to be viable. Therefore, the highest attainable aquatic life use for this stream segment is BWW2.

13 Recreational Use Attainability Analysis - Conclusion

Recommended Highest Attainable Use: Recreational Use	A2
40 CFR 131.10(g)(2) (Flow)	The natural low flow conditions and water levels of the stream segment prevent the attainment of an A1 recreational use (see Site Observations Table). An A1 designation requires the ability for full body immersion. Therefore, the highest attainable recreational use is A2.

14 Flow

Field Work Date	Description
7/6/2016	USGS stream gage data for the area indicated stream flows were normal at the time of assessment.

Use Attainability Analysis - Data
Site Observations

Use	Site parameter	Site ID #1236-4
AL/R	15 Latitude, Longitude (DD)	41.25075, -94.39516
AL/R	16 Average Depth (in)	7.5
AL/R	17 Maximum Depth (in)	26
AL/R	18 Stream Width (ft)	10.5
AL/R	19 Pools Observed?	Yes
AL only	20 Non-Game Fish Present and Counts (Species: Number)	Bluntnose minnow: 8 Creek chub: 15 Fantail darter: 1 Fathead minnow: 26 Green sunfish: 12 Johnny darter: 2 Sand shiner: 18
	21 Game Fish Present and Counts (Species (Size Range): Number)	Bluegill: 2 Yellow bullhead: 1
	22 Stream Habitat (See also: #29 Site Photos)	Open agriculture drainageway. Not much debris. Overall poor habitat.
R only	23 Evidence of Use for Primary Contact Recreation? (Yes*/No)	No
	24 Evidence of Use by Children? (Yes*/No)	No
	25 Evidence of Use for Secondary Contact Recreation? (Yes*/No)	Rope under bridge. Probably for a minnow trap.
AL/R	26 Additional Description	N/A

Use	Site parameter	Site ID #1236-5
AL/R	15 Latitude, Longitude (DD)	41.24549, -94.33726
AL/R	16 Average Depth (in)	4
AL/R	17 Maximum Depth (in)	16
AL/R	18 Stream Width (ft)	12.5
AL/R	19 Pools Observed?	Yes
AL only	20 Non-Game Fish Present and Counts (Species: Number)	Not sampled
	21 Game Fish Present and Counts (Species (Size Range): Number)	Not sampled
	22 Stream Habitat (See also: #29 Site Photos)	Not sampled
R only	23 Evidence of Use for Primary Contact Recreation? (Yes*/No)	No
	24 Evidence of Use by Children? (Yes*/No)	No
	25 Evidence of Use for Secondary Contact Recreation? (Yes*/No)	No
AL/R	26 Additional Description	Nearby residence. Very difficult to access. Very steep banks. Remote area.

Use	Site parameter	Site ID #1236-6
AL/R	15 Latitude, Longitude (DD)	41.24682, -94.28482
AL/R	16 Average Depth (in)	6
AL/R	17 Maximum Depth (in)	12
AL/R	18 Stream Width (ft)	16.5
AL/R	19 Pools Observed?	No

Use	Site parameter	Site ID #1236-6
AL only	20 Non-Game Fish Present and Counts (Species: Number)	Bigmouth shiner: 13 Bluntnose minnow: 3 Creek chub: 7 Fantail darter: 2 Fathead minnow: 16 Green sunfish: 6 Sand shiner: 2 Suckermouth minnow: 2
	21 Game Fish Present and Counts (Species (Size Range): Number)	Bluegill: 1
	22 Stream Habitat (See also: #29 Site Photos)	Wide sandy bottom. Some shade.
R only	23 Evidence of Use for Primary Contact Recreation? (Yes*/No)	No
	24 Evidence of Use by Children? (Yes*/No)	No
	25 Evidence of Use for Secondary Contact Recreation? (Yes*/No)	No
AL/R	26 Additional Description	N/A

AL = Aquatic Life

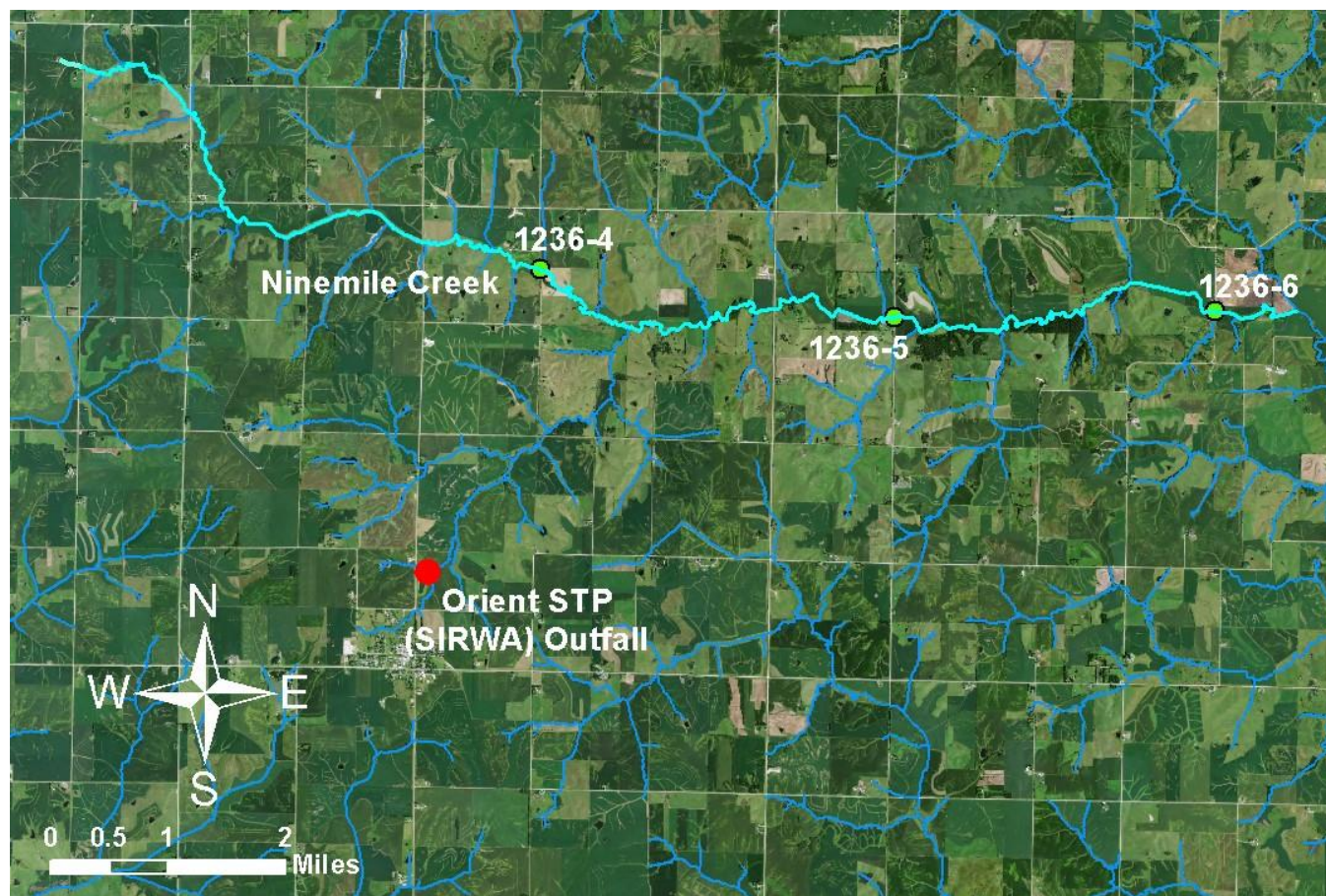
R = Recreation

*If yes, elaborate.

27 Supplemental Data

N/A

28 Map of Segment, Outfall, and Site(s)



29 Site Photos



Figure 1. 1236-4 Recreational use assessment midpoint looking upstream.



Figure 2. 1236-4 Recreational use assessment midpoint looking downstream.



Figure 3. 1236-4 Recreational use assessment upstream looking upstream.



Figure 4. 1236-4 Recreational use assessment upstream looking downstream.



Figure 5. 1236-4 Recreational use assessment downstream looking upstream.



Figure 6. 1236-4 Recreational use assessment downstream looking downstream.



Figure 7. 1236-4 Fantail darter.



Figure 8. 1236-4 No trespassing sign.



Figure 9. 1236-4 Start of aquatic assessment looking upstream.



Figure 10. 1236-4 Start of aquatic assessment looking downstream.



Figure 11. 1236-5 Recreational use assessment midpoint looking upstream.



Figure 12. 1236-5 Recreational use assessment midpoint looking downstream.



Figure 13. 1236-5 Recreational use assessment upstream looking upstream.



Figure 14. 1236-5 Recreational use assessment upstream looking downstream.



Figure 15. 1236-5 Recreational use assessment downstream looking upstream.



Figure 16. 1236-5 Recreational use assessment downstream looking downstream.



Figure 17. 1236-6 Recreational use assessment midpoint looking upstream.



Figure 18. 1236-6 Recreational use assessment midpoint looking downstream.



Figure 19. 1236-6 Recreational use assessment upstream looking upstream.



Figure 20. 1236-6 Recreational use assessment upstream looking downstream.



Figure 21. 1236-6 Recreational use assessment downstream looking upstream.



Figure 22. 1236-6 Recreational use assessment downstream looking downstream.

Appendix I.

c. Stream Flow and Habitat Data

Data analysis results for stream flow and habitat variables were similar to game fish indicator results. Stream width, average thalweg depth, maximum depth, and flow appear to be the characteristics that correlate the best with consistently positive game fish indicators. Stream flow and habitat dimensions (where available) were consistently larger for streams with watershed sizes exceeding 275 square miles. Habitat measurements are not available for the largest sample sites that were sampled by boat instead of the typical wading method.

Ranges of stream size, habitat and flow associated with varying levels of game fish indicator responses are listed in Table 2. These are general statewide values, which may assist in decision making related to the recommendation of warm water aquatic life use designations. In general terms, stream segments that have watershed area, flow and habitat characteristics in the green shaded boxes have a greater probability that game fish indicators will be consistently positive (i.e., consistent with Class B(WW-1)), while stream habitat and flow levels that equate to the red boxes are much less likely to support game fish populations (i.e., Class B(WW-2) or Class B(WW-3)). Stream segments that have a mixture of characteristics, mainly in the yellow range, may require consideration of the additional habitat features collected during the field assessment, to determine the appropriate aquatic life use designation.

Table 2. Generalized statewide ranges of stream habitat indicator levels and associated game fish indicator responses.

Game Fish Indicator Responses	Stream Watershed Area (sq.mi.)	Stream Flow (typical base flow - cfs)	Stream Width Average (ft)	Average Depth (ft)	Avg. Thalweg Depth (ft)	Maximum Depth (ft)
Consistently Positive	>275	>30	>65	>1.2	>2.2	>4.4
Mixed	25-275	0.8-30	11-65	0.2-1.2	0.8-2.2	1.8-4.4
Consistently Negative	<25	<0.8	<11	<0.2	<0.8	<1.8

Iowa uses U.S. EPA's Level IV Ecoregions as a template for wadeable stream biological condition assessment. Stream flow and habitat characteristics can vary from ecoregion to ecoregion. To provide additional insight into where the area of overlap exists between Class B(LR/WW-2) and Class B(WW/WW-1) streams, a query of Iowa's bioassessment database produced 476 habitat assessment records from which a summary of habitat characteristics was prepared (Table 3a-f) (see appendix for full spreadsheet). The summary is grouped by ecoregion and former designated uses in order to illustrate the extremes and ranges of overlap in habitat characteristics.