

Use Attainability Analysis

1 Water Body Name	West Branch Wapsinonoc Creek
2 Segment Description	Upstream of West Branch WWTP outfall to confluence with unnamed tributary
3 Segment Length (mi)	2.9
4 Drainage Area (sq. mi.)	8.36
5 Segment Start Latitude, Longitude (DD)	41.65683, -91.33111
6 Segment End Latitude, Longitude (DD)	41.68984, -91.34971
7 Route of Flow (Next Downstream Adopted Designated Use)	West Branch Wapsinonoc Creek (A3, BWW2, proposed to A2, BWW2, existing)
8 NPDES Facility and Permit Number (If Applicable)	West Branch Mobile Home (1600600)
9 Sample Site ID(s)	1286-1, 1286-2
10 Segment County Name(s)	Cedar
11 Field Work Date(s)	8/4/2016

12 Aquatic Life Use Attainability Analysis - Conclusion

Recommended Highest Attainable Use: Aquatic Life Use	BWW2
40 CFR 131.10(g)(2) (Flow)	The natural low flow conditions of the stream segment are insufficient to create the habitat necessary to support a viable community of game fish. A lack of age ranges and diversity of game fish species indicates a non-reproducing population (see Site Observations Table). A BWW1 designation requires multiple species and age ranges to be viable. Therefore, the highest attainable aquatic life use for this stream segment is BWW2.
40 CFR 131.10(g)(5) (Physical Conditions)	Physical conditions related to the natural features of the water body are insufficient to support a viable community of game fish. Drainage area, stream width (for 1286-2), and maximum depth (for 1286-2) fall within the “consistently negative” game fish indicator responses (see Table 2 in Appendix I). A lack of age ranges and diversity of game fish species indicates a non-reproducing population (see Site Observations Table). A BWW1 designation requires multiple species and age ranges to be viable. Therefore, the highest attainable aquatic life use for this stream segment is BWW2.

13 Recreational Use Attainability Analysis - Conclusion

Recommended Highest Attainable Use: Recreational Use	A3
40 CFR 131.10(g)(2) (Flow)	The natural low flow conditions and water levels of the stream segment prevent an A1 recreational use (see Site Observations Table). An A1 designation requires the ability for full body immersion. However, this stream segment is in close proximity to a population center/park. [In addition, there is evidence of children’s recreation by the stream (see Site Observations Table).] Therefore, the A3 recreational use is recommended.

14 Flow

Field Work Date	Description
8/4/2016	USGS stream gage 05464942 data for the area indicated stream flows were above normal at the time of assessment.

Use Attainability Analysis - Data

Site Observations

Use	Site parameter	Site ID #1286-1
AL/R	15 Latitude, Longitude (DD)	41.67965, -91.34544
AL/R	16 Average Depth (in)	6.5
AL/R	17 Maximum Depth (in)	36
AL/R	18 Stream Width (ft)	16
AL/R	19 Pools Observed?	Yes
AL only	20 Non-Game Fish Present and Counts (Species: Number)	Blacknose dace: 7 Bluntnose minnow: 11 Common shiner: 14 Creek chub: 9 Fantail darter: 1 Fathead minnow: 1 Green sunfish: 1 Johnny darter: 4
	21 Game Fish Present and Counts (Species (Size Range): Number)	None
	22 Stream Habitat (See also: #29 Site Photos)	Difficult fishing due to depth and murkiness, wide and murky, stream primarily a dredged-out drainage ditch, some overhanging grass, some shading, limited woody debris in water, mostly wide slow moving pool.
R only	23 Evidence of Use for Primary Contact Recreation? (Yes*/No)	No
	24 Evidence of Use by Children? (Yes*/No)	Yes
	25 Evidence of Use for Secondary Contact Recreation? (Yes*/No)	Yes
AL/R	26 Additional Description	A couple of foot paths to stream along the bridge; pieces of squirt gun; Hoover Nature Trail crosses at this location; park bench adjacent to trail nearby; fish looked to be in poor health, one fish with a black spot.

Use	Site parameter	Site ID #1286-2
AL/R	15 Latitude, Longitude (DD)	41.67136, -91.34323
AL/R	16 Average Depth (in)	7
AL/R	17 Maximum Depth (in)	17
AL/R	18 Stream Width (ft)	8
AL/R	19 Pools Observed?	Yes
AL only	20 Non-Game Fish Present and Counts (Species: Number)	Not sampled
	21 Game Fish Present and Counts (Species (Size Range): Number)	Not sampled
	22 Stream Habitat (See also: #29 Site Photos)	N/A

Use	Site parameter	Site ID #1286-2
R only	23 Evidence of Use for Primary Contact Recreation? (Yes*/No)	No
	24 Evidence of Use by Children? (Yes*/No)	No
	25 Evidence of Use for Secondary Contact Recreation? (Yes*/No)	No
AL/R	26 Additional Description	Wapsi Creek Park & the Hoover Nature Trail are adjacent to the creek.

AL = Aquatic Life

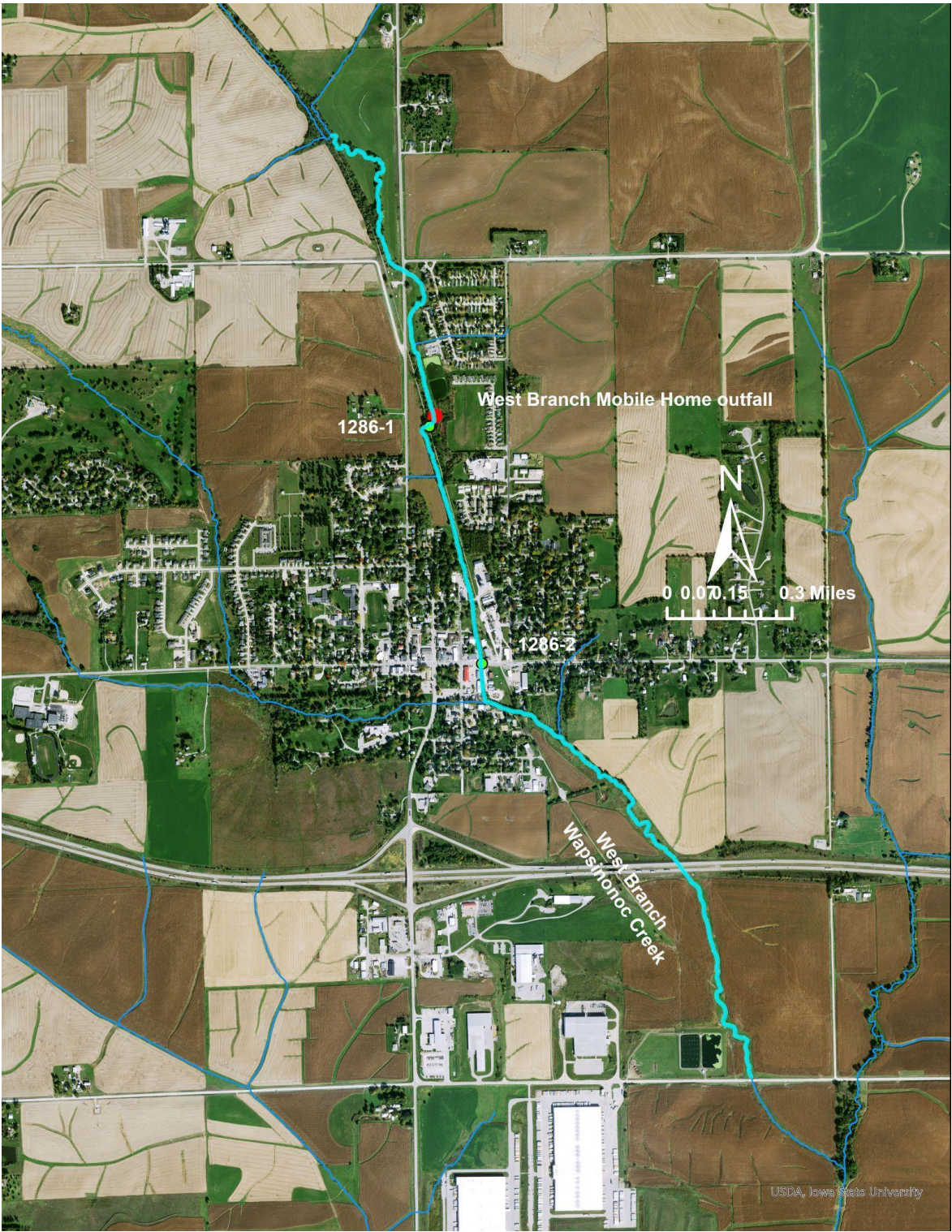
R = Recreation

*If yes, elaborate.

27 Supplemental Data

N/A

28 Map of Segment, Outfall, and Site(s)



29 Site Photos



Figure 1. 1286-1 Recreational use assessment upstream looking upstream.



Figure 2. 1286-1 Recreational use assessment upstream looking downstream.



Figure 3. 1286-1 Recreational use assessment downstream looking downstream.



Figure 4. 1286-1 Recreational use assessment downstream looking downstream.



Figure 5. 1286-1 Recreational use assessment midpoint looking upstream.



Figure 6. 1286-1 Recreational use assessment midpoint looking downstream.



Figure 7. 1286-1 Hoover Nature Trail sign adjacent to the stream.



Figure 8. 1286-1 Hoover Nature Trail sign adjacent to the stream.



Figure 9. 1286-1 Hoover Nature Trail bridge crossing.



Figure 10. 1286-1 Hoover Nature Trail bridge crossing.



Figure 11. 1286-1 Outfall.



Figure 12. 1286-1 Start of aquatic assessment looking upstream.



Figure 13. 1286-1 Start of aquatic assessment looking downstream.



Figure 14. 1286-1 End of aquatic assessment looking upstream.



Figure 15. 1286-1 End of aquatic assessment looking downstream.



Figure 16. 1286-2 Recreational use assessment upstream looking upstream.



Figure 17. 1286-2 Recreational use assessment upstream looking downstream.



Figure 18. 1286-2 Recreational use assessment midpoint looking upstream.



Figure 19. 1286-2 Recreational use assessment midpoint looking downstream.

Appendix I.

c. Stream Flow and Habitat Data

Data analysis results for stream flow and habitat variables were similar to game fish indicator results. Stream width, average thalweg depth, maximum depth, and flow appear to be the characteristics that correlate the best with consistently positive game fish indicators. Stream flow and habitat dimensions (where available) were consistently larger for streams with watershed sizes exceeding 275 square miles. Habitat measurements are not available for the largest sample sites that were sampled by boat instead of the typical wading method.

Ranges of stream size, habitat and flow associated with varying levels of game fish indicator responses are listed in Table 2. These are general statewide values, which may assist in decision making related to the recommendation of warm water aquatic life use designations. In general terms, stream segments that have watershed area, flow and habitat characteristics in the green shaded boxes have a greater probability that game fish indicators will be consistently positive (i.e., consistent with Class B(WW-1)), while stream habitat and flow levels that equate to the red boxes are much less likely to support game fish populations (i.e., Class B(WW-2) or Class B(WW-3)). Stream segments that have a mixture of characteristics, mainly in the yellow range, may require consideration of the additional habitat features collected during the field assessment, to determine the appropriate aquatic life use designation.

Table 2. Generalized statewide ranges of stream habitat indicator levels and associated game fish indicator responses.

Game Fish Indicator Responses	Stream Watershed Area (sq.mi.)	Stream Flow (typical base flow - cfs)	Stream Width Average (ft)	Average Depth (ft)	Avg. Thalweg Depth (ft)	Maximum Depth (ft)
Consistently Positive	>275	>30	>65	>1.2	>2.2	>4.4
Mixed	25-275	0.8-30	11-65	0.2-1.2	0.8-2.2	1.8-4.4
Consistently Negative	<25	<0.8	<11	<0.2	<0.8	<1.8

Iowa uses U.S. EPA's Level IV Ecoregions as a template for Wadeable Stream Biological Condition Assessment. Stream flow and habitat characteristics can vary from ecoregion to ecoregion. To provide additional insight into where the area of overlap exists between Class B(LR/WW-2) and Class B(WW/WW-1) streams, a query of Iowa's bioassessment database produced 476 habitat assessment records from which a summary of habitat characteristics was prepared (Table 3a-f) (see appendix for full spreadsheet). The summary is grouped by ecoregion and former designated uses in order to illustrate the extremes and ranges of overlap in habitat characteristics.