

Use Attainability Analysis

1 Water Body Name	Unnamed Tributary to Wolf Creek
2 Segment Description	Mouth to confluence with unnamed tributary
3 Segment Length (mi)	2.0
4 Drainage Area (sq. mi.)	5.71
5 Segment Start Latitude, Longitude (DD)	41.88812, -93.32185
6 Segment End Latitude, Longitude (DD)	41.90846, -93.31669
7 Route of Flow (Next Downstream Adopted Designated Use)	Unnamed Tributary (A3, BWW2, proposed) to Wolf Creek (A2, BWW2, pending to A1, BWW1, HH, pending) to Indian Creek (A1, BWW2)
8 NPDES Facility and Permit Number (If Applicable)	Collins, City of STP (8515001)
9 Sample Site ID(s)	1261-1, 1261-2
10 Segment County Name(s)	Story
11 Field Work Date(s)	7/23/2015

12 Aquatic Life Use Attainability Analysis - Conclusion

Recommended Highest Attainable Use: Aquatic Life Use	BWW2
40 CFR 131.10(g)(2) (Flow)	The natural low flow conditions of the stream segment are insufficient to create the habitat necessary to support a viable community of game fish. A lack of age ranges and diversity of game fish species indicates a non-reproducing population (see Site Observations Table). A BWW1 designation requires multiple species and age ranges to be viable. Therefore, the highest attainable aquatic life use for this stream segment is BWW2.
40 CFR 131.10(g)(5) (Physical Conditions)	Physical conditions related to the natural features of the water body are insufficient to support a viable community of game fish. Drainage area and stream width fall within the “consistently negative” game fish indicator responses (see Table 2 in Appendix I). A lack of age ranges and diversity of game fish species indicates a non-reproducing population (see Site Observations Table). A BWW1 designation requires multiple species and age ranges to be viable. Therefore, the highest attainable aquatic life use for this stream segment is BWW2.

13 Recreational Use Attainability Analysis - Conclusion

Recommended Highest Attainable Use: Recreational Use	A3
40 CFR 131.10(g)(2) (Flow)	The natural low flow conditions and water levels of the stream segment prevent an A1 recreational use (see Site Observations Table). An A1 designation requires the ability for full body immersion. However, this stream segment is in close proximity to a population center/park. Therefore, the A3 recreational use is recommended.

14 Flow

Field Work Date	Description
7/23/2015	Based on USGS StreamStats, the stream flow on Unnamed Tributary to Wolf Creek on this date was 2.68 cfs, which was within the 25th and 75th percentile flow value range (0.428 cfs - 3.065 cfs).

Use Attainability Analysis - Data
Site Observations

Use	Site parameter	Site ID #1261-1
AL/R	15 Latitude, Longitude (DD)	41.89833, -93.31831
AL/R	16 Average Depth (in)	12.5
AL/R	17 Maximum Depth (in)	30
AL/R	18 Stream Width (ft)	8.75
AL/R	19 Pools Observed?	Yes
AL only	20 Non-Game Fish Present and Counts (Species: Number)	Blacknose dace: 13 Central stoneroller: 1 Creek chub: 9 Fathead minnow: 5 Hornyhead chub: 2
	21 Game Fish Present and Counts (Species (Size Range): Number)	None
	22 Stream Habitat (See also: #29 Site Photos)	There is some detritus and trees for shade. A pool was caused by a beaver dam.
R only	23 Evidence of Use for Primary Contact Recreation? (Yes*/No)	No
	24 Evidence of Use by Children? (Yes*/No)	No
	25 Evidence of Use for Secondary Contact Recreation? (Yes*/No)	No
AL/R	26 Additional Description	Remote access.

Use	Site parameter	Site ID #1261-2
AL/R	15 Latitude, Longitude (DD)	41.89193, -93.32073
AL/R	16 Average Depth (in)	Not sampled
AL/R	17 Maximum Depth (in)	Not sampled
AL/R	18 Stream Width (ft)	Not sampled
AL/R	19 Pools Observed?	Not sampled
AL only	20 Non-Game Fish Present and Counts (Species: Number)	Not sampled
	21 Game Fish Present and Counts (Species (Size Range): Number)	Not sampled
	22 Stream Habitat (See also: #29 Site Photos)	N/A
R only	23 Evidence of Use for Primary Contact Recreation? (Yes*/No)	No
	24 Evidence of Use by Children? (Yes*/No)	No
	25 Evidence of Use for Secondary Contact Recreation? (Yes*/No)	No
AL/R	26 Additional Description	The grass was mowed adjacent to the stream on the south side, with an adjacent bike path. This site had similar flow to the upstream recreational site. This site overlaps with the Heart of Iowa Nature Trail (noted on map).

AL = Aquatic Life

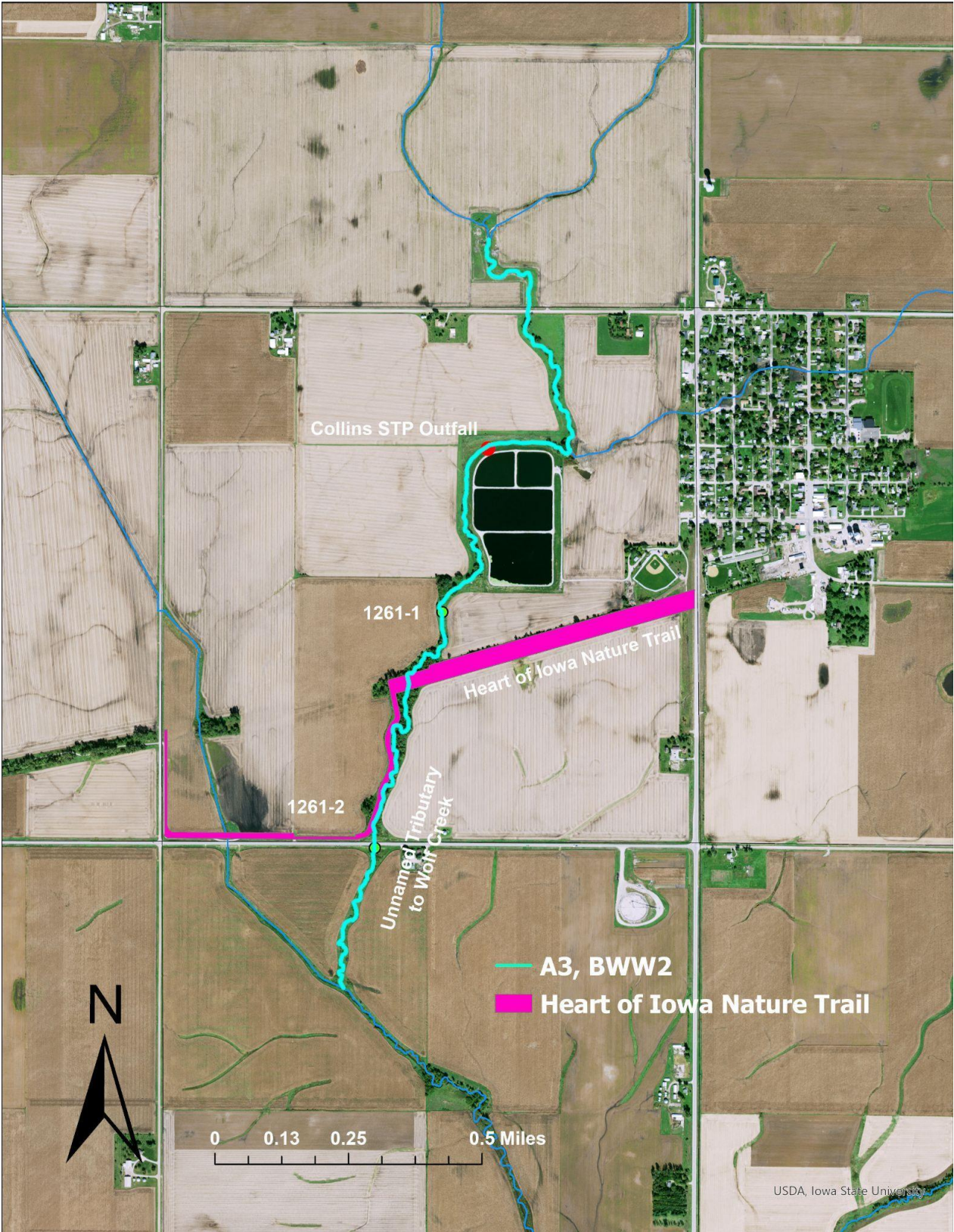
R = Recreation

*If yes, elaborate.

27 Supplemental Data

Desktop review verified that the UAA field work is still valid.

28 Maps of Segment, Outfall, and Site(s)



29 Site Photos



Figure 1. 1261-1 Recreational use assessment upstream looking upstream.



Figure 2. 1261-1 Recreational use assessment upstream looking downstream.



Figure 3. 1261-1 Recreational use assessment downstream looking upstream.



Figure 4. 1261-1 Recreational use assessment downstream looking downstream.



Figure 5. 1261-1 Beaver dam.



Figure 6. 1261-1 Start of aquatic use assessment looking upstream.



Figure 7. 1261-1 Start of aquatic use assessment looking downstream.



Figure 8. 1261-1 Large pool upstream.



Figure 9. 1261-1 Large pool downstream.



Figure 10. 1261-1 Hornyhead Chub.



Figure 11. 1261-2 Recreational use assessment midpoint looking upstream.



Figure 12. 1261-2 Recreational use assessment midpoint looking downstream.



Figure 13. 1261-2 Trail adjacent to the stream.

Appendix I.

c. Stream Flow and Habitat Data

Data analysis results for stream flow and habitat variables were similar to game fish indicator results. Stream width, average thalweg depth, maximum depth, and flow appear to be the characteristics that correlate the best with consistently positive game fish indicators. Stream flow and habitat dimensions (where available) were consistently larger for streams with watershed sizes exceeding 275 square miles. Habitat measurements are not available for the largest sample sites that were sampled by boat instead of the typical wading method.

Ranges of stream size, habitat and flow associated with varying levels of game fish indicator responses are listed in Table 2. These are general statewide values, which may assist in decision making related to the recommendation of warm water aquatic life use designations. In general terms, stream segments that have watershed area, flow and habitat characteristics in the green shaded boxes have a greater probability that game fish indicators will be consistently positive (i.e., consistent with Class B(WW-1)), while stream habitat and flow levels that equate to the red boxes are much less likely to support game fish populations (i.e., Class B(WW-2) or Class B(WW-3)). Stream segments that have a mixture of characteristics, mainly in the yellow range, may require consideration of the additional habitat features collected during the field assessment, to determine the appropriate aquatic life use designation.

Table 2. Generalized statewide ranges of stream habitat indicator levels and associated game fish indicator responses.

Game Fish Indicator Responses	Stream Watershed Area (sq.mi.)	Stream Flow (typical base flow - cfs)	Stream Width Average (ft)	Average Depth (ft)	Avg. Thalweg Depth (ft)	Maximum Depth (ft)
Consistently Positive	>275	>30	>65	>1.2	>2.2	>4.4
Mixed	25-275	0.8-30	11-65	0.2-1.2	0.8-2.2	1.8-4.4
Consistently Negative	<25	<0.8	<11	<0.2	<0.8	<1.8

Iowa uses U.S. EPA's Level IV Ecoregions as a template for wadeable stream biological condition assessment. Stream flow and habitat characteristics can vary from ecoregion to ecoregion. To provide additional insight into where the area of overlap exists between Class B(LR/WW-2) and Class B(WW/WW-1) streams, a query of Iowa's bioassessment database produced 476 habitat assessment records from which a summary of habitat characteristics was prepared (Table 3a-f) (see appendix for full spreadsheet). The summary is grouped by ecoregion and former designated uses in order to illustrate the extremes and ranges of overlap in habitat characteristics.