

Use Attainability Analysis

1 Water Body Name	Pigeon Creek
2 Segment Description	Mouth to confluence with North Pigeon Creek
3 Segment Length (mi)	8.4
4 Drainage Area (sq. mi.)	166
5 Segment Start Latitude, Longitude (DD)	41.31818, -95.88624
6 Segment End Latitude, Longitude (DD)	41.41525, -95.81893
7 Route of Flow (Next Downstream Adopted Designated Use)	Pigeon Creek (A1, proposed, BWW2, existing) to Missouri River (A1, BWW1, HH, C)
8 NPDES Facility and Permit Number (If Applicable)	Crescent, City of STP (7822001)
9 Sample Site ID(s)	1283-1, 1283-2
10 Segment County Name(s)	Pottawattamie
11 Field Work Date(s)	8/11/2016

12 Aquatic Life Use Attainability Analysis - Conclusion

Recommended Highest Attainable Use: Aquatic Life Use	N/A
---	-----

13 Recreational Use Attainability Analysis - Conclusion

Recommended Highest Attainable Use: Recreational Use	A1
Water levels and flow are sufficient to support full body immersion (see Site Observations Table). Therefore, the highest attainable recreational use for this stream segment is A1.	

14 Flow

Field Work Date	Description
8/11/2016	USGS stream gage data for the area indicated stream flows were elevated at the time of assessment. Flows were between 76th and 90th percentile.

Use Attainability Analysis - Data

Site Observations

Use	Site parameter	Site ID #1283-1
AL/R	15 Latitude, Longitude (DD)	41.40675, -95.83379
AL/R	16 Average Depth (in)	Not sampled
AL/R	17 Maximum Depth (in)	Not sampled
AL/R	18 Stream Width (ft)	Not sampled
AL/R	19 Pools Observed?	Yes
AL only	20 Non-Game Fish Present and Counts (Species: Number)	N/A
	21 Game Fish Present and Counts (Species (Size Range): Number)	N/A
	22 Stream Habitat (See also: #29 Site Photos)	Not sampled
R only	23 Evidence of Use for Primary Contact Recreation? (Yes*/No)	No
	24 Evidence of Use by Children? (Yes*/No)	No
	25 Evidence of Use for Secondary Contact Recreation? (Yes*/No)	No

Use	Site parameter	Site ID #1283-1
AL/R	26 Additional Description	Higher flow than normal possibly from recent rainfall. Channelized ditch, too deep to assess both up and down.

Use	Site parameter	Site ID #1283-2
AL/R	15 Latitude, Longitude (DD)	41.37649, -95.85816
AL/R	16 Average Depth (in)	Not sampled
AL/R	17 Maximum Depth (in)	>48
AL/R	18 Stream Width (ft)	Not sampled
AL/R	19 Pools Observed?	Yes
AL only	20 Non-Game Fish Present and Counts (Species: Number)	N/A
	21 Game Fish Present and Counts (Species (Size Range): Number)	N/A
	22 Stream Habitat (See also: #29 Site Photos)	Not sampled
R only	23 Evidence of Use for Primary Contact Recreation? (Yes*/No)	No
	24 Evidence of Use by Children? (Yes*/No)	No
	25 Evidence of Use for Secondary Contact Recreation? (Yes*/No)	No
AL/R	26 Additional Description	Too deep to assess (depth was greater than stadia rod).

AL = Aquatic Life

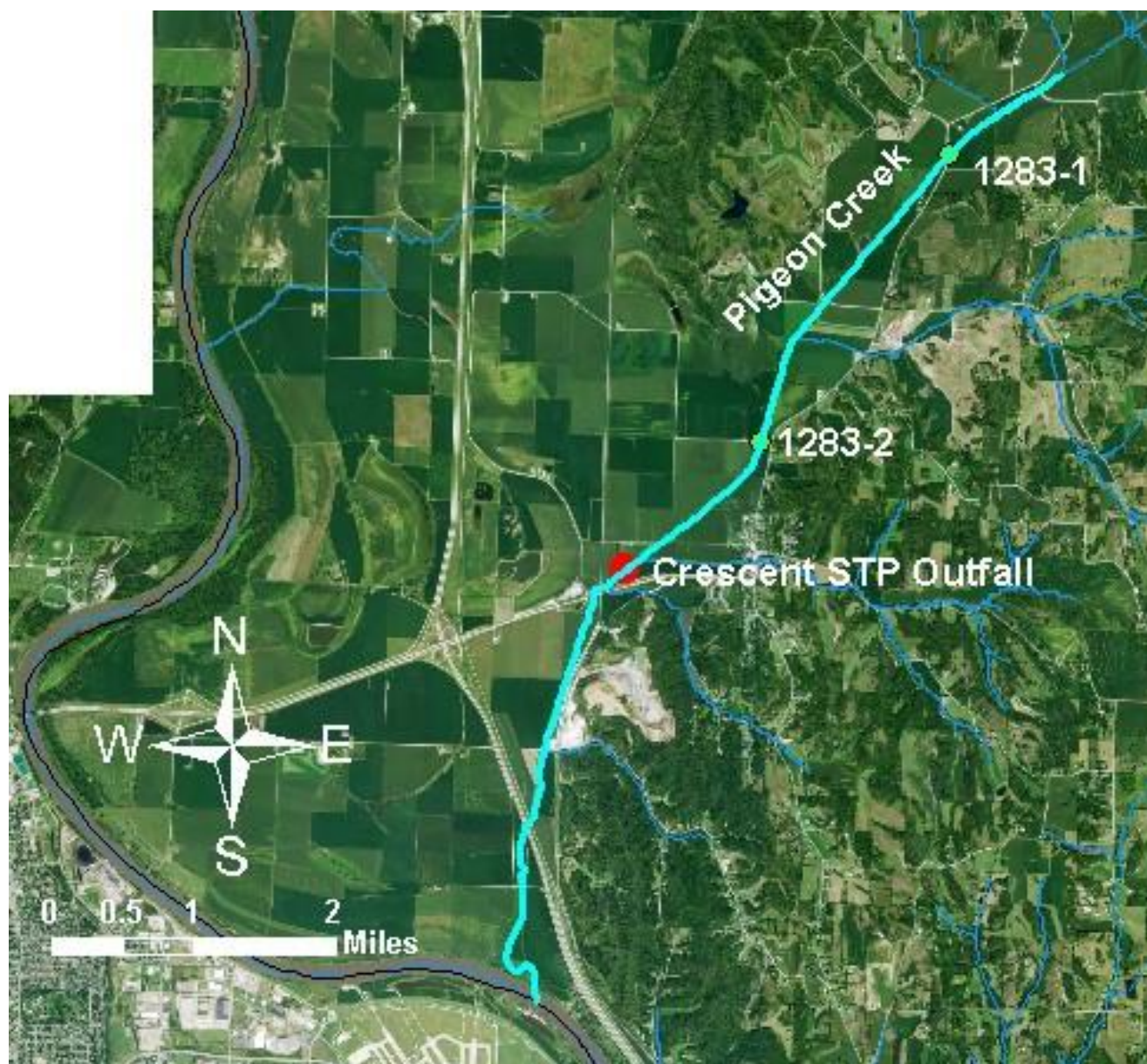
R = Recreation

*If yes, elaborate.

27 Supplemental Data

N/A

28 Map of Segment, Outfall, and Site(s)



29 Site Photos



Figure 1. 1283-1 Recreational use assessment midpoint looking upstream.



Figure 2. 1283-1 Recreational use assessment midpoint looking downstream.



Figure 3. 1283-1 Recreational use assessment upstream looking upstream.



Figure 4. 1283-1 Recreational use assessment upstream looking downstream.



Figure 5. 1283-1 Recreational use assessment downstream looking upstream.



Figure 6. 1283-1 Recreational use assessment downstream looking downstream.



Figure 7. 1283-2 Recreational use assessment midpoint looking upstream.



Figure 8. 1283-2 Recreational use assessment midpoint looking downstream.



Figure 9. 1283-2 Recreational use assessment upstream looking upstream.



Figure 10. 1283-2 Recreational use assessment upstream looking downstream.