

Use Attainability Analysis

1 Water Body Name	Sugar Creek
2 Segment Description	Confluence with Pitman Creek to confluence with unnamed tributary
3 Segment Length (mi)	13.7
4 Drainage Area (sq. mi.)	79
5 Segment Start Latitude, Longitude (DD)	40.66569, -91.46790
6 Segment End Latitude, Longitude (DD)	40.77374, -91.55138
7 Route of Flow (Next Downstream Adopted Designated Use)	Sugar Creek (A2, proposed, BWW2, existing) to Sugar Creek (A2, BWW2)
8 NPDES Facility and Permit Number (If Applicable)	St. Paul, City of STP (5675001)
9 Sample Site ID(s)	1292-2, 1292-3, 1292-4
10 Segment County Name(s)	Lee
11 Field Work Date(s)	9/27/2016 (1292-2, 1292-4), 9/28/2016 (1292-3)

12 Aquatic Life Use Attainability Analysis - Conclusion

Recommended Highest Attainable Use: Aquatic Life Use	N/A
---	-----

13 Recreational Use Attainability Analysis - Conclusion

Recommended Highest Attainable Use: Recreational Use	A2
40 CFR 131.10(g)(2) (Flow)	The natural low flow conditions and water levels of the stream segment prevent the attainment of an A1 recreational use (see Site Observations Table). An A1 designation requires the ability for full body immersion. Therefore, the highest attainable recreational use is A2.

14 Flow

Field Work Date	Description
9/27/2016	USGS stream gage data for the area indicated stream flows were above normal at the time of assessment.
9/28/2016	USGS stream gage data for the area indicated stream flows were above normal at the time of assessment.

Use Attainability Analysis - Data

Site Observations

Use	Site parameter	Site ID # 1292-2
AL/R	15 Latitude, Longitude (DD)	40.76971, -91.54826
AL/R	16 Average Depth (in)	11
AL/R	17 Maximum Depth (in)	31
AL/R	18 Stream Width (ft)	17
AL/R	19 Pools Observed?	Yes
AL only	20 Non-Game Fish Present and Counts (Species: Number)	N/A
	21 Game Fish Present and Counts (Species (Size Range): Number)	N/A
	22 Stream Habitat (See also: #29 Site Photos)	N/A
R only	23 Evidence of Use for Primary Contact Recreation? (Yes*/No)	No
	24 Evidence of Use by Children? (Yes*/No)	No

Use	Site parameter	Site ID # 1292-2
	25 Evidence of Use for Secondary Contact Recreation? (Yes*/No)	No
AL/R	26 Additional Description	The upstream pool had no flow. Steep banks, rocky creek.

Use	Site parameter	Site ID # 1292-3
AL/R	15 Latitude, Longitude (DD)	40.66502, -91.47776
AL/R	16 Average Depth (in)	8
AL/R	17 Maximum Depth (in)	16
AL/R	18 Stream Width (ft)	58
AL/R	19 Pools Observed?	No
AL only	20 Non-Game Fish Present and Counts (Species: Number)	N/A
	21 Game Fish Present and Counts (Species (Size Range): Number)	N/A
	22 Stream Habitat (See also: #29 Site Photos)	N/A
R only	23 Evidence of Use for Primary Contact Recreation? (Yes*/No)	No
	24 Evidence of Use by Children? (Yes*/No)	No
	25 Evidence of Use for Secondary Contact Recreation? (Yes*/No)	No
AL/R	26 Additional Description	Slow moving flow. Tire in water near bridge.

Use	Site parameter	Site ID # 1292-4
AL/R	15 Latitude, Longitude (DD)	40.70261, -91.51139
AL/R	16 Average Depth (in)	7.5
AL/R	17 Maximum Depth (in)	30
AL/R	18 Stream Width (ft)	32
AL/R	19 Pools Observed?	Yes
AL only	20 Non-Game Fish Present and Counts (Species: Number)	N/A
	21 Game Fish Present and Counts (Species (Size Range): Number)	N/A
	22 Stream Habitat (See also: #29 Site Photos)	N/A
R only	23 Evidence of Use for Primary Contact Recreation? (Yes*/No)	No
	24 Evidence of Use by Children? (Yes*/No)	No
	25 Evidence of Use for Secondary Contact Recreation? (Yes*/No)	No
AL/R	26 Additional Description	Barbed wire strand across the stream downstream of the bridge. Long pool extending above and below the bridge

AL = Aquatic Life

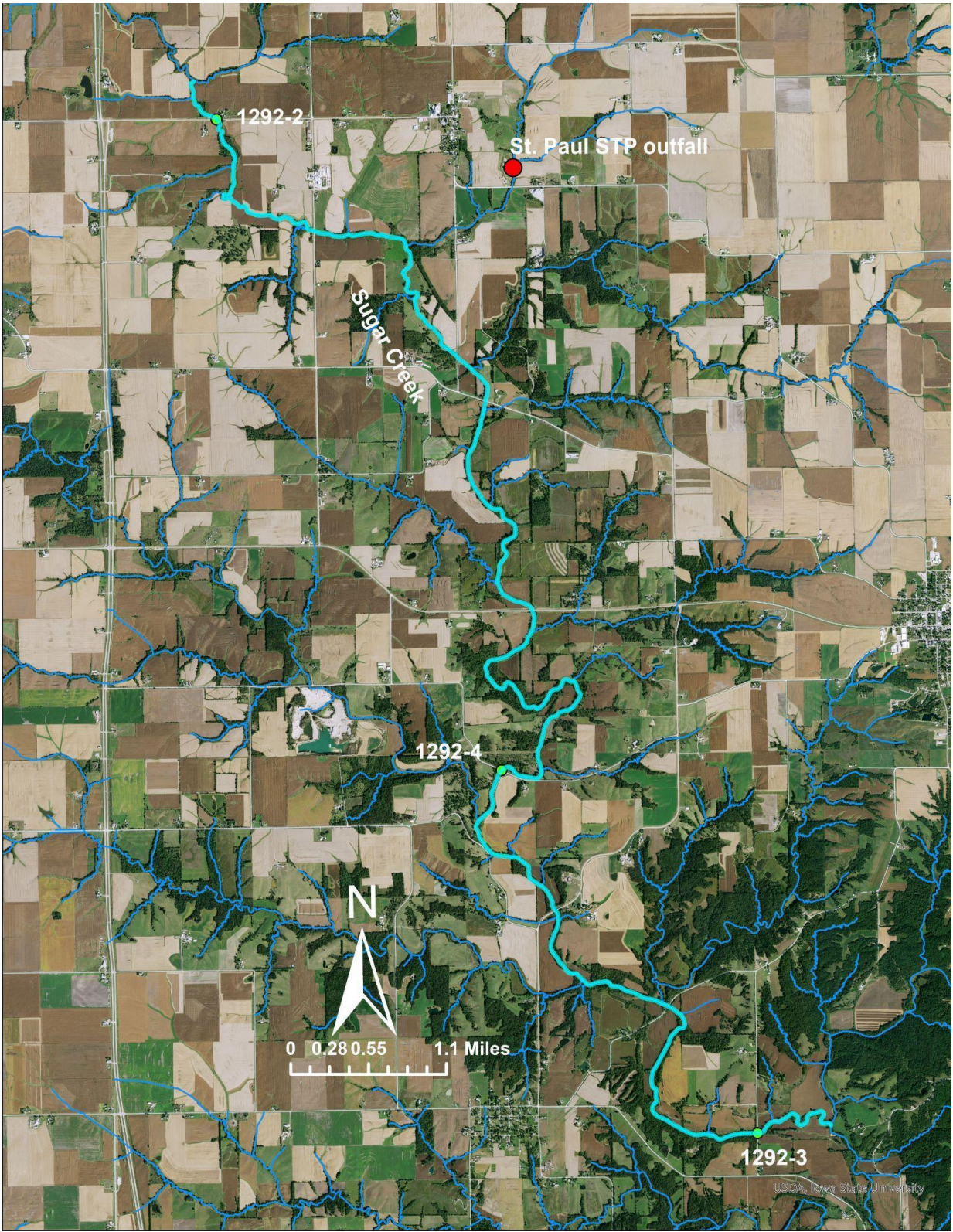
R = Recreation

*If yes, elaborate.

27 Supplemental Data

N/A

28 Map of Segment, Outfall, and Site(s)



29 Site Photos



Figure 1. 1292-2 Recreational use assessment midpoint looking upstream.



Figure 2. 1292-2 Recreational use assessment midpoint looking downstream.



Figure 3. 1292-2 Recreational use assessment upstream looking upstream.



Figure 4. 1292-2 Recreational use assessment upstream looking downstream.



Figure 5. 1292-2 Recreational use assessment downstream looking upstream.



Figure 6. 1292-2 Recreational use assessment downstream looking downstream.



Figure 7. 1292-3 Recreational use assessment midpoint looking upstream.



Figure 8. 1292-3 Recreational use assessment midpoint looking downstream.



Figure 9. 1292-3 Recreational use assessment upstream looking upstream.



Figure 10. 1292-3 Recreational use assessment upstream looking downstream.



Figure 11. 1292-3 Recreational use assessment downstream looking upstream.



Figure 12. 1292-3 Recreational use assessment downstream looking downstream.



Figure 13. 1292-4 Recreational use assessment midpoint looking upstream.



Figure 14. 1292-4 Recreational use assessment midpoint looking downstream.



Figure 15. 1292-4 Recreational use assessment upstream looking upstream.



Figure 16. 1292-4 Recreational use assessment upstream looking downstream.



Figure 17. 1292-4 Recreational use assessment downstream looking upstream.



Figure 18. 1292-4 Recreational use assessment downstream looking downstream.