

Use Attainability Analysis

1 Water Body Name	Dry Mill Creek
2 Segment Description	West line of S9, T93N, R4W, Clayton County to confluence with unnamed tributary
3 Segment Length (mi)	2.0
4 Drainage Area (sq. mi.)	12.8
5 Segment Start Latitude, Longitude (DD)	42.88085, -91.32945
6 Segment End Latitude, Longitude (DD)	42.89367, -91.33444
7 Route of Flow (Next Downstream Adopted Designated Use)	Dry Mill Creek (A2, proposed, BW2, existing to A1, pending, A2, BCW1, HH, existing) to Roberts Creek (A1, BW2)
8 NPDES Facility and Permit Number (If Applicable)	Scenic Acres Care Facility (2200901)
9 Sample Site ID(s)	1290-2
10 Segment County Name(s)	Clayton
11 Field Work Date(s)	9/21/2017

13 Recreational Use Attainability Analysis - Conclusion

Recommended Highest Attainable Use: Recreational Use	A2
40 CFR 131.10(g)(2) (Flow)	The natural low flow conditions and water levels of the stream segment prevent the attainment of an A1 recreational use (see Site Observations Table). An A1 designation requires the ability for full body immersion. Therefore, the highest attainable recreational use is A2.

14 Flow

Field Work Date	Description
9/21/2017	USGS stream gage 05412020 data for the area indicated stream flows were normal at the time of assessment.

Use Attainability Analysis - Data

Site Observations

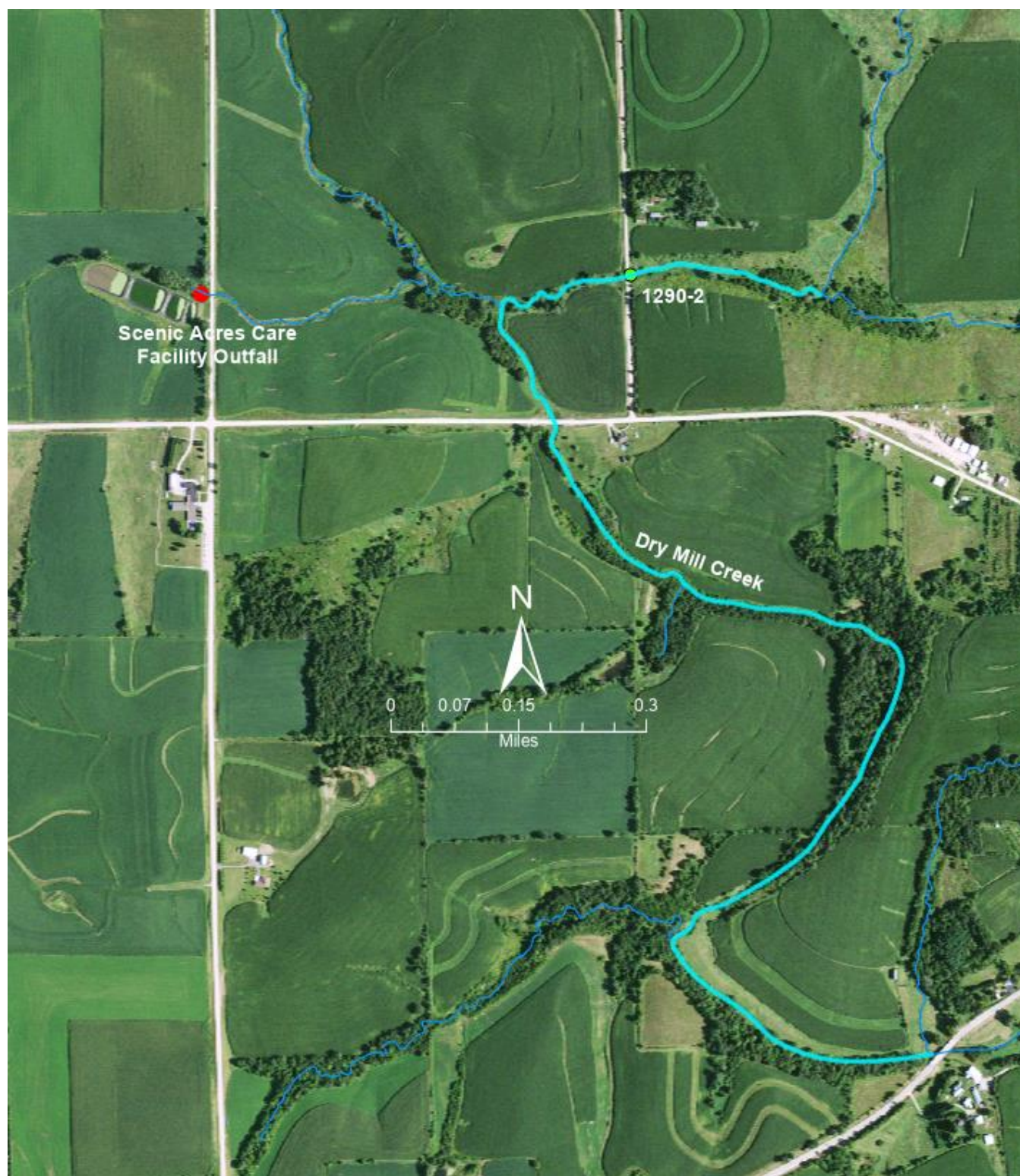
Use	Site parameter	Site ID # 1290-2
AL/R	15 Latitude, Longitude (DD)	42.89407, -91.33894
AL/R	16 Average Depth (in)	8.5
AL/R	17 Maximum Depth (in)	16
AL/R	18 Stream Width (ft)	9.5
AL/R	19 Pools Observed?	Yes
AL only	20 Non-Game Fish Present and Counts (Species: Number)	N/A
	21 Game Fish Present and Counts (Species (Size Range): Number)	N/A
	22 Stream Habitat (See also: #29 Site Photos)	N/A
R only	23 Evidence of Use for Primary Contact Recreation? (Yes*/No)	No
	24 Evidence of Use by Children? (Yes*/No)	No
	25 Evidence of Use for Secondary Contact Recreation? (Yes*/No)	Yes. Local resident seines for minnows occasionally.
AL/R	26 Additional Description	Beaver dams caused water to pool in areas, including at the culverts under the road.

AL = Aquatic Life
R = Recreation
*If yes, elaborate.

27 Supplemental Data

N/A

28 Map of Segment, Outfall, and Site(s)



29 Site Photos



Figure 1. 1290-2. Recreational use assessment midpoint looking upstream.



Figure 2. 1290-2. Recreational use assessment midpoint looking downstream.



Figure 3. 1290-2. Recreational use assessment upstream looking upstream.



Figure 4. 1290-2 Recreational use assessment upstream looking downstream.



Figure 5. 1290-2. Recreational use assessment downstream looking upstream.



Figure 6. 1290-2. Recreational use assessment downstream looking downstream.



Figure 7. 1290-2. Recreational use assessment beaver dam downstream of the bridge.