

Use Attainability Analysis

1 Water Body Name	East Indian Creek
2 Segment Description	Mouth to confluence with unnamed tributary
3 Segment Length (mi)	20.2
4 Drainage Area (sq. mi.)	76.1
5 Segment Start Latitude, Longitude (DD)	41.99513, -93.36887
6 Segment End Latitude, Longitude (DD)	42.13476, -93.39909
7 Route of Flow (Next Downstream Adopted Designated Use)	East Indian Creek (A2, proposed, BWW2, existing) to Indian Creek (A1, BWW2)
8 NPDES Facility and Permit Number (If Applicable)	McCallsburg, City of STP (8552001)
9 Sample Site ID(s)	1361-3, 1361-4, 1361-5
10 Segment County Name(s)	Story
11 Field Work Date(s)	7/26/2018 (1361-3, 1361-4), 7/27/2018 (1361-5)

12 Aquatic Life Use Attainability Analysis - Conclusion

Recommended Highest Attainable Use: Aquatic Life Use	N/A
---	-----

13 Recreational Use Attainability Analysis - Conclusion

Recommended Highest Attainable Use: Recreational Use	A2
40 CFR 131.10(g)(2) (Flow)	The natural low flow conditions and water levels of the stream segment prevent the attainment of an A1 recreational use (see Site Observations Table). An A1 designation requires the ability for full body immersion. Therefore, the highest attainable recreational use is A2.

14 Flow

Field Work Date	Description
7/26/2018	Based on USGS StreamStats, the stream flow at UAA Site ID #1361-3 on this date was 9.91 cfs, which was within the 25th and 75th percentile flow value range (2.075 cfs - 14.45 cfs).
7/26/2018	Based on USGS StreamStats, the stream flow at UAA Site ID #1361-4 on this date was 22.1 cfs, which was within the 25th and 75th percentile flow value range (4.715 cfs - 32.6 cfs).
7/27/2018	Based on USGS StreamStats, the stream flow at UAA Site ID #1361-5 on this date was 30.7 cfs, which was within the 25th and 75th percentile flow value range (7.255 cfs - 50.15 cfs).

Use Attainability Analysis - Data

Site Observations

Use	Site parameter	Site ID # 1361-3
AL/R	15 Latitude, Longitude (DD)	42.13756, -93.39899
AL/R	16 Average Depth (in)	8
AL/R	17 Maximum Depth (in)	32
AL/R	18 Stream Width (ft)	14
AL/R	19 Pools Observed?	No

Use	Site parameter	Site ID # 1361-3
AL only	20 Non-Game Fish Present and Counts (Species: Number)	N/A
	21 Game Fish Present and Counts (Species (Size Range): Number)	N/A
	22 Stream Habitat (See also: #29 Site Photos)	N/A
R only	23 Evidence of Use for Primary Contact Recreation? (Yes*/No)	No
	24 Evidence of Use by Children? (Yes*/No)	No
	25 Evidence of Use for Secondary Contact Recreation? (Yes*/No)	No
AL/R	26 Additional Description	N/A

Use	Site parameter	Site ID # 1361-4
AL/R	15 Latitude, Longitude (DD)	42.06330, -93.37317
AL/R	16 Average Depth (in)	8
AL/R	17 Maximum Depth (in)	32
AL/R	18 Stream Width (ft)	14
AL/R	19 Pools Observed?	No
AL only	20 Non-Game Fish Present and Counts (Species: Number)	N/A
	21 Game Fish Present and Counts (Species (Size Range): Number)	N/A
	22 Stream Habitat (See also: #29 Site Photos)	N/A
R only	23 Evidence of Use for Primary Contact Recreation? (Yes*/No)	The streamside resident recreates in the stream.
	24 Evidence of Use by Children? (Yes*/No)	No
	25 Evidence of Use for Secondary Contact Recreation? (Yes*/No)	No
AL/R	26 Additional Description	N/A

Use	Site parameter	Site ID # 1361-5
AL/R	15 Latitude, Longitude (DD)	42.00088, -93.37207
AL/R	16 Average Depth (in)	11.5
AL/R	17 Maximum Depth (in)	32 (below bridge)
AL/R	18 Stream Width (ft)	33
AL/R	19 Pools Observed?	No
AL only	20 Non-Game Fish Present and Counts (Species: Number)	N/A
	21 Game Fish Present and Counts (Species (Size Range): Number)	N/A
	22 Stream Habitat (See also: #29 Site Photos)	Steep banks.
R only	23 Evidence of Use for Primary Contact Recreation? (Yes*/No)	No
	24 Evidence of Use by Children? (Yes*/No)	No
	25 Evidence of Use for Secondary Contact Recreation? (Yes*/No)	No
AL/R	26 Additional Description	Some old trash, concrete, and rebar in the creek around the bridge. Dead end bridge out.

AL = Aquatic Life

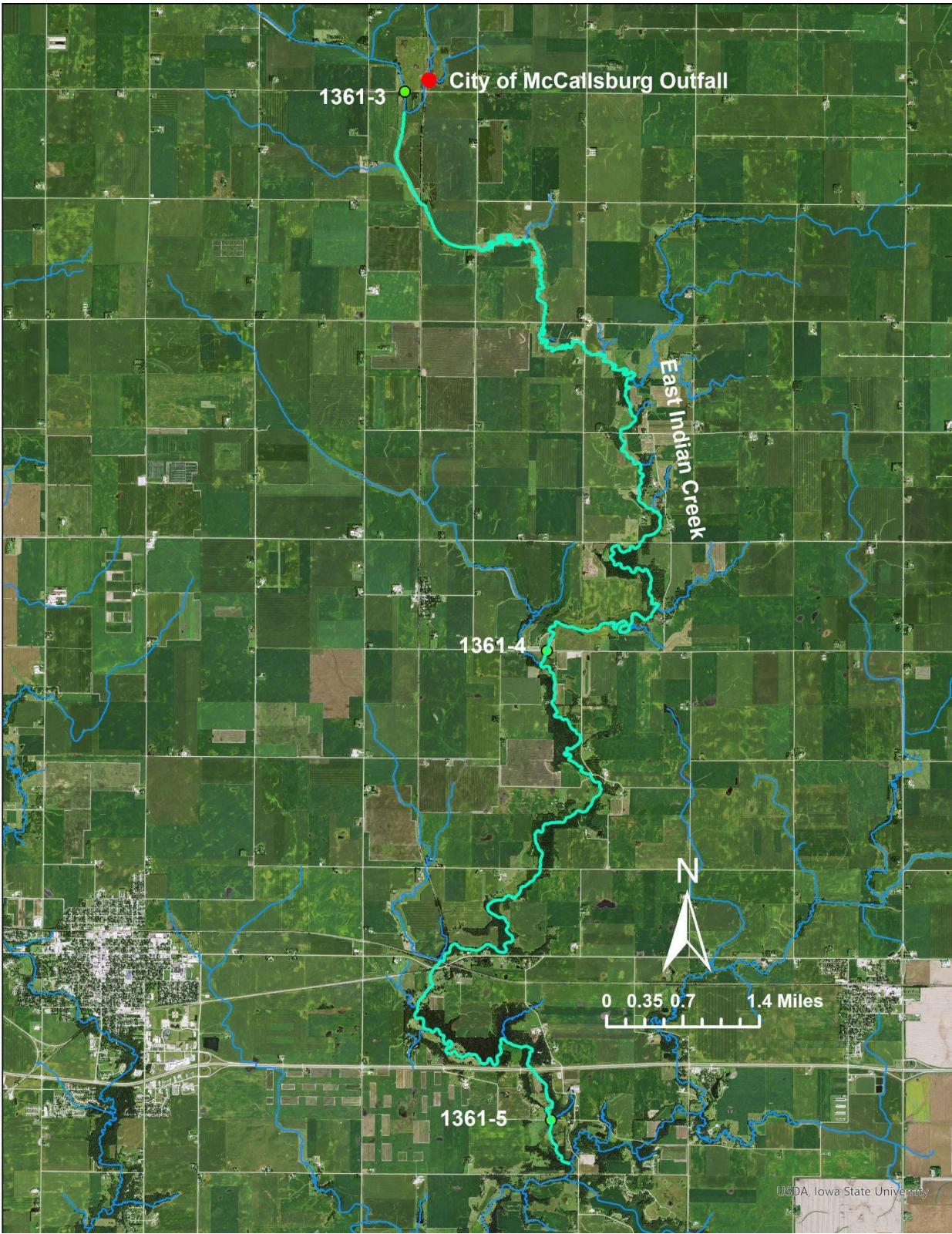
R = Recreation

*If yes, elaborate.

27 Supplemental Data

N/A

28 Map of Segment, Outfall, and Site(s)



29 Site Photos



Figure 1. 1361-3 Recreational use assessment midpoint looking upstream.



Figure 2. 1361-3 Recreational use assessment midpoint looking downstream.



Figure 3. 1361-3 Recreational use assessment upstream looking upstream.



Figure 4. 1361-3 Recreational use assessment upstream looking downstream.



Figure 5. 1361-3 Recreational use assessment downstream looking upstream.



Figure 6. 1361-3 Recreational use assessment downstream looking downstream.



Figure 7. 1361-4 Recreational use assessment upstream looking upstream.



Figure 8. 1361-4 Recreational use assessment upstream looking downstream.



Figure 9. 1361-5 Recreational use assessment midpoint looking upstream.



Figure 10. 1361-5 Recreational use assessment midpoint looking downstream.



Figure 11. 1361-5 Recreational use assessment upstream looking upstream.



Figure 12. 1361-5 Recreational use assessment upstream looking downstream.



Figure 13. 1361-5 Recreational use assessment downstream looking upstream.



Figure 14. 1361-5 Recreational use assessment downstream looking downstream.