

White-tailed Deer Program Report

Jace R. Elliott, Iowa Department of Natural Resources, 1436 255th St., Boone, IA 50036

2024-2025 HUNTING SEASON RESULTS

In the 2024-2025 season, Iowa deer hunters reported 101,282 deer harvest (Table 1.1), marking a 3% decrease from the previous season (Table 1.2). Accounting for reporting noncompliance and wounding loss estimates a total hunting mortality of 153,239 deer (Figure 1.1). Deer license sales reflected a -4% change from the prior season.

During the 2024-2025 season, antlerless deer (adult does and fawns) constituted 56% of the total harvest, which is consistent with the previous season (Table 1.1). Antlered deer, which includes shed-antlered bucks, made up 44% of the total harvest, with 1,164 shed-antlered bucks reported.

Figure 1.2 illustrates the long-term trends of deer hunters, license sales, and reported harvest. Iowa continues to maintain stable deer hunter numbers despite severe declines experienced throughout many Midwestern states. Figure 1.3 presents a historical breakdown of reported harvest by the sex-age category of deer.

In the 2024-2025 hunting season, 69 counties offered additional antlerless licenses, totaling 77,575 available antlerless licenses statewide (Figure 1.4). Resident hunters had the opportunity to purchase an unlimited number of antlerless licenses before reaching the county quota, but were limited to one antlerless license before September 15th. These licenses were specific to a county and season.

Total harvest for the first and second **shotgun seasons** was -1% lower and 4% higher, respectively, in 2024-2025 compared to 2023-2024. Overall, the total reported harvest for the entire shotgun season was approximately 1% higher than the previous season, with license sales down by about 2% (Table 1.2). Antlered bucks represented 40% of the total harvest during the shotgun seasons, while does made up 49% of the reported harvest. Button bucks accounted for 10%, and shed-antlered bucks were approximately 1% (Table 1.1). The distribution of reported antlered deer kill per square mile (Table 1.4) was highest in northeastern and southern Iowa due to greater deer densities and hunting opportunities.

Archery season hunters harvested 19,443 deer, including those killed on senior crossbow licenses, reflecting a 13% decrease from 2023-2024. Antlered deer constituted 61% of the total reported archery harvest (Table 1.1).

During the **early muzzleloader** season, there was a 23% decrease in the reported harvest compared to 2023-2024, with license sales decreasing by the same amount (Table 1.1 and Table 1.2). This season saw a harvest of 46% antlered bucks, 47% does, and 7% button bucks. In the **late muzzleloader** season of 2024-2025, hunters reported harvesting 6,189 deer, marking a 22% decrease compared to the previous season. Of these, 35% were antlered bucks.

Nonresident hunters were issued 6,055 any-deer licenses for the 2024-2025 deer hunting seasons (Table 1.1). All nonresident hunters also received antlerless-only licenses, with additional optional antlerless-only licenses available to them. The reported success rate for the nonresident any-deer and antlerless-only licenses was 43% and 21%, respectively (Table 1.1). In total, nonresidents reported harvesting 2,614 antlered bucks and 1,478 does in 2024-2025.

Youth season experienced a 3% increase in the total number of licenses issued (14,655) compared to 2023-2024 (Table 1.1 and Table 1.2). Youth season hunters who did not harvest a deer during the youth deer hunting season could use the unfilled tag during subsequent deer hunting seasons. The success rate for youth licenses was 37% with 5,361 deer reported. Fifty-seven percent of the deer reported were antlered bucks. Reported harvest by youth hunters increased 13% compared to 2023-2024.

Disabled season hunters were issued 462 licenses, a 5% decrease from the previous season. Reported harvest by hunters using a disabled license decreased 13% compared to 2023-2024. The success rate for disabled licenses was 31% with 142 deer reported. Fifty-three percent of the deer reported were antlered bucks (Table 1.1).

Special management hunts were conducted at 72 locations in 2024-2025 during which the total reported harvest was 2,493 deer (Table 1.5). These hunts aim to address the specific management needs of areas such as state and county parks and urban areas that cannot be opened to general regulations. The majority of deer taken in these hunts were antlerless, and the deer tagged did not count against a hunter's regular licenses. These hunts achieved their population goals in localized areas.

An additional 6,723 licenses and permits were issued to hunters/landowners in **depredation** situations which resulted in a reported harvest of 3,551 deer. This marked a 4% decrease in the depredation harvest from 2023-2024 (Table 1.1 and Table 1.2).

POPULATION TREND SURVEYS

Three techniques are currently used to monitor trends in Iowa deer populations: (1) **spotlight surveys** conducted by Iowa DNR staff in March and April, (2) the number of **animal-related accidents** reported to the Department of Transportation, (3) the annual **Bow Hunter Observation Survey** coordinated by the Iowa DNR and conducted by volunteers during October-November (Table 1.6). These surveys correlate well with the fourth population index, **reported antlered harvest**, but are subject to variability due to survey conditions, deer behavior, habitat conditions, and weather.

New spotlight routes were introduced in 2006 and replaced the old ones in 2012, consisting of 199 transects distributed across all counties for a total survey mileage of about 4,750 miles. These routes aim to be more representative of available rural habitats within counties. In 2025, the average number of deer observed per 25 miles decreased by 10% compared to 2024 (Table 1.6).

In 2024, approximately 7,800 animal-related vehicle collisions were reported in Iowa (-2% change from 2023).

The Bow Hunter Observation Survey, representing about 80,000 hours of observation throughout the state, replaced the aerial deer survey as a trend index. This survey is conducted voluntarily by a randomly selected group of Iowa bow hunters. In 2024, total deer observations per 1,000 hours hunted increased by 6%.

The estimated harvest from 2006-2024 also informed the statewide deer population model, which suggests a stable to slightly increasing deer population statewide (Figure 1.5). The model aligns well with the harvest and bowhunter observation data. The data indicate that the statewide deer herd declined from 2006-2013, stabilized from 2013-2017, and has slightly increased since 2017. Most counties have achieved or are close to the population goal set in the 2009 Review of Iowa's Deer Management Program, aiming for *"a stable deer population at the approximate level that occurred in the mid to late 1990s... capable of sustaining a harvest of between 110,00 - 130,000 deer annually"*.

DISEASE REPORT

The Iowa DNR actively monitors **Chronic Wasting Disease (CWD)**, a neurological disease primarily affecting deer and elk. CWD is characterized by abnormal protein (prion) buildup in the brain, leading to weight loss, abnormal behavior. CWD is always fatal to the infected animal. Iowa has tested over 100,000 wild deer and 5,000 captive deer and elk since 2002 as part of CWD surveillance. Samples are collected from all 99 counties, primarily in areas near detected cases. In 2024-2025, 136 new CWD-positive cases were detected, adding Davis, Howard, Pottawattamie, Shelby, Story, and Wapello counties to the list of affected areas, bringing the total to 29 (Figure 1.6).

Hemorrhagic Disease (HD), which includes Epizootic Hemorrhagic Disease (EHD) and Bluetongue, is another disease affecting deer, spread by biting midges. EHD causes high fever and weakens the heart and lungs. Unlike CWD which is 100% fatal, deer can survive HD, though survival in Iowa is seemingly low. Dry, drought years can worsen HD outbreaks as deer concentrate around persisting water sources. Extended warm weather into fall months can also increase mortality, as the insect vectors persist longer on the landscape. In 2024, over 3,000 suspected cases of HD were reported across 96 counties. Overall, 2024 was considered the most severe and widespread HD outbreak in Iowa, with the highest number of reported HD-related mortalities in state history.

FIGURES

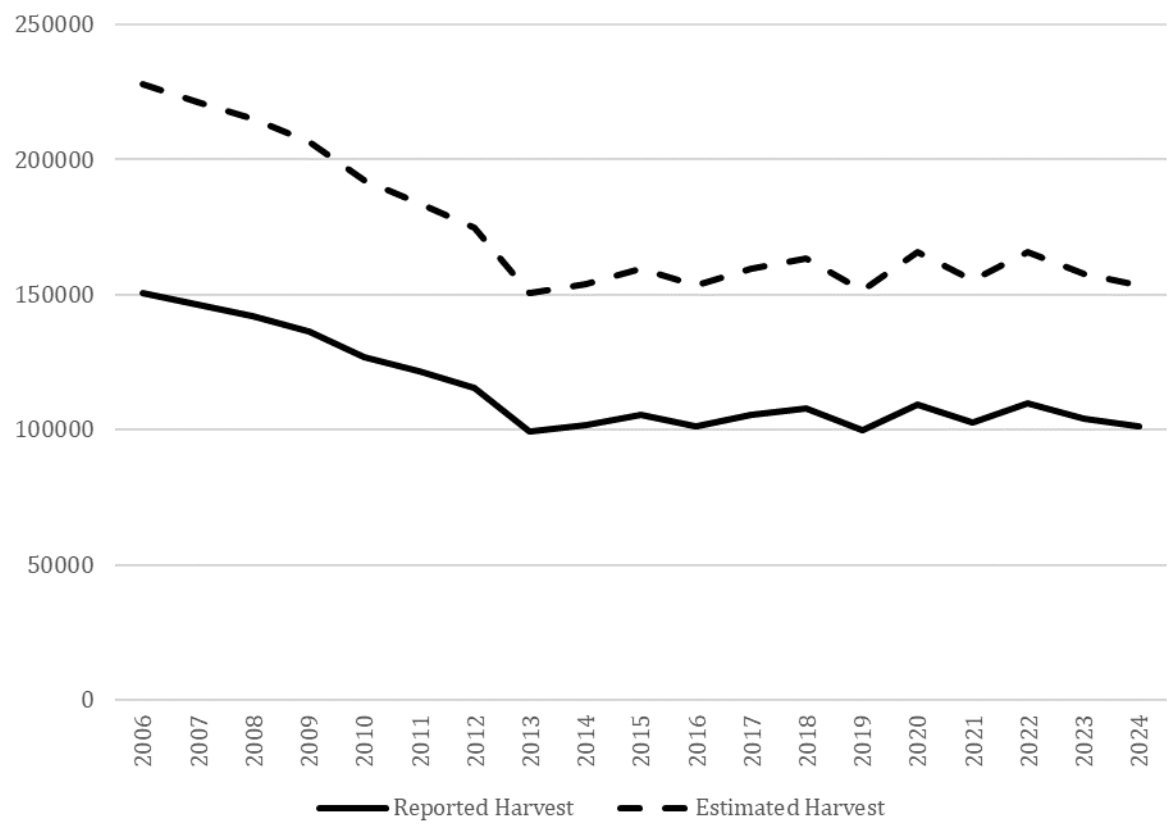


Figure 1.1. Number of reported and estimated deer harvest from 2006-2007 to 2024-2025.

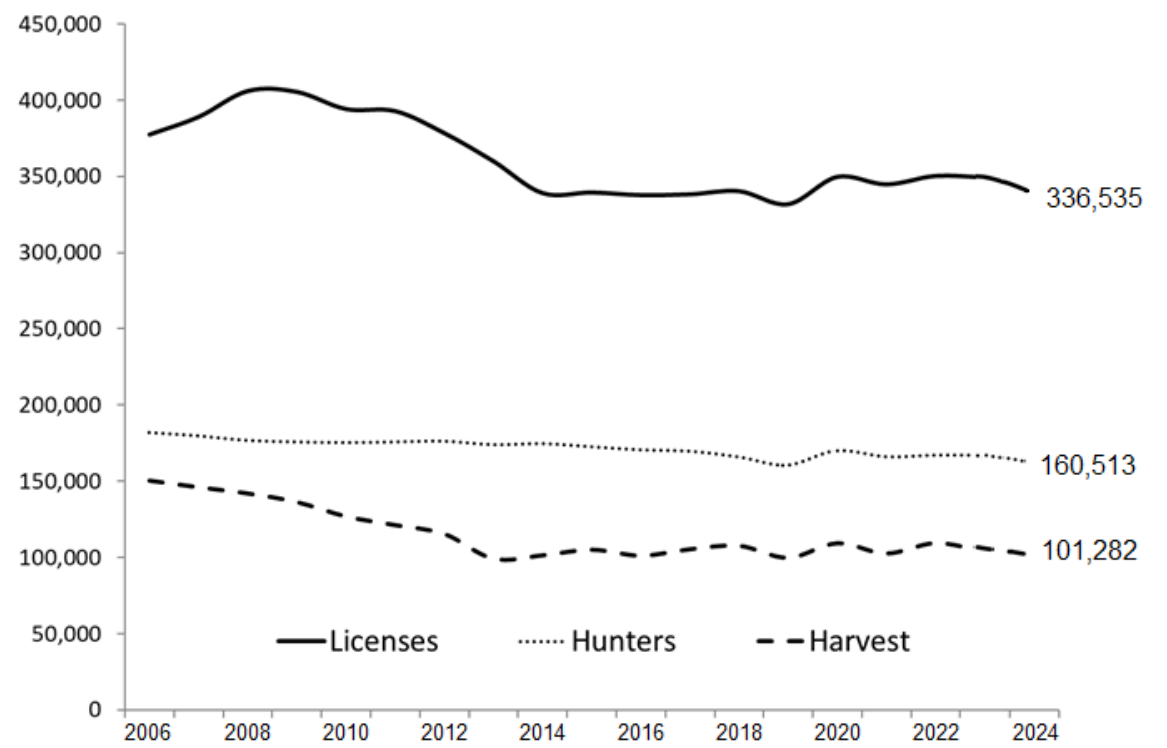


Figure 1.2. Post-season reported harvest, hunters, and license sales from 2006-2007 to 2024-2025 seasons.

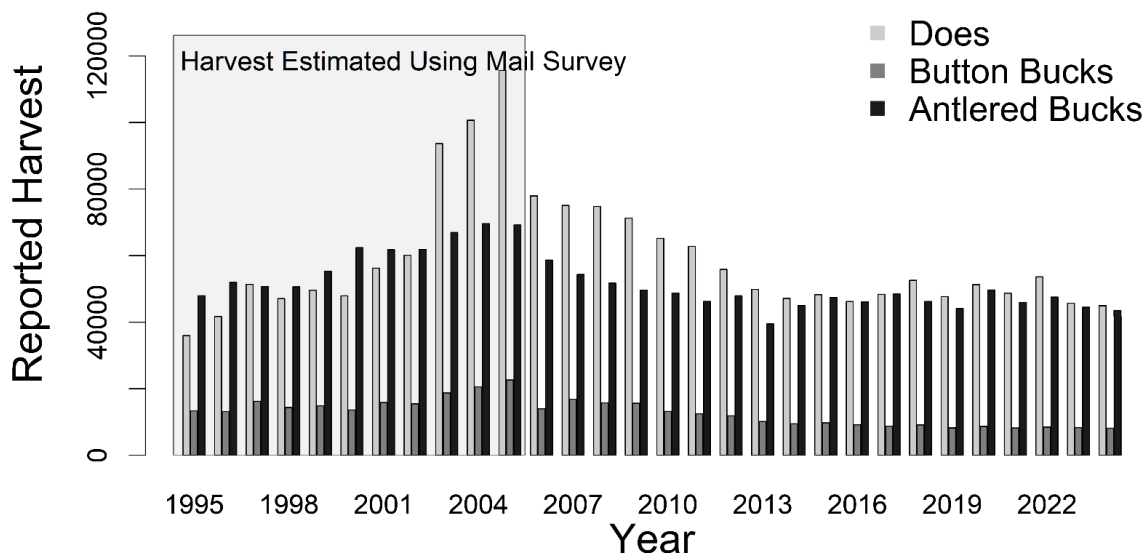


Figure 1.3. Number of does, button bucks, and antlered bucks harvested from 1995-1996 to 2024-2025. Since 2006, harvest was reported and is not directly comparable to previous estimates from mail card surveys.

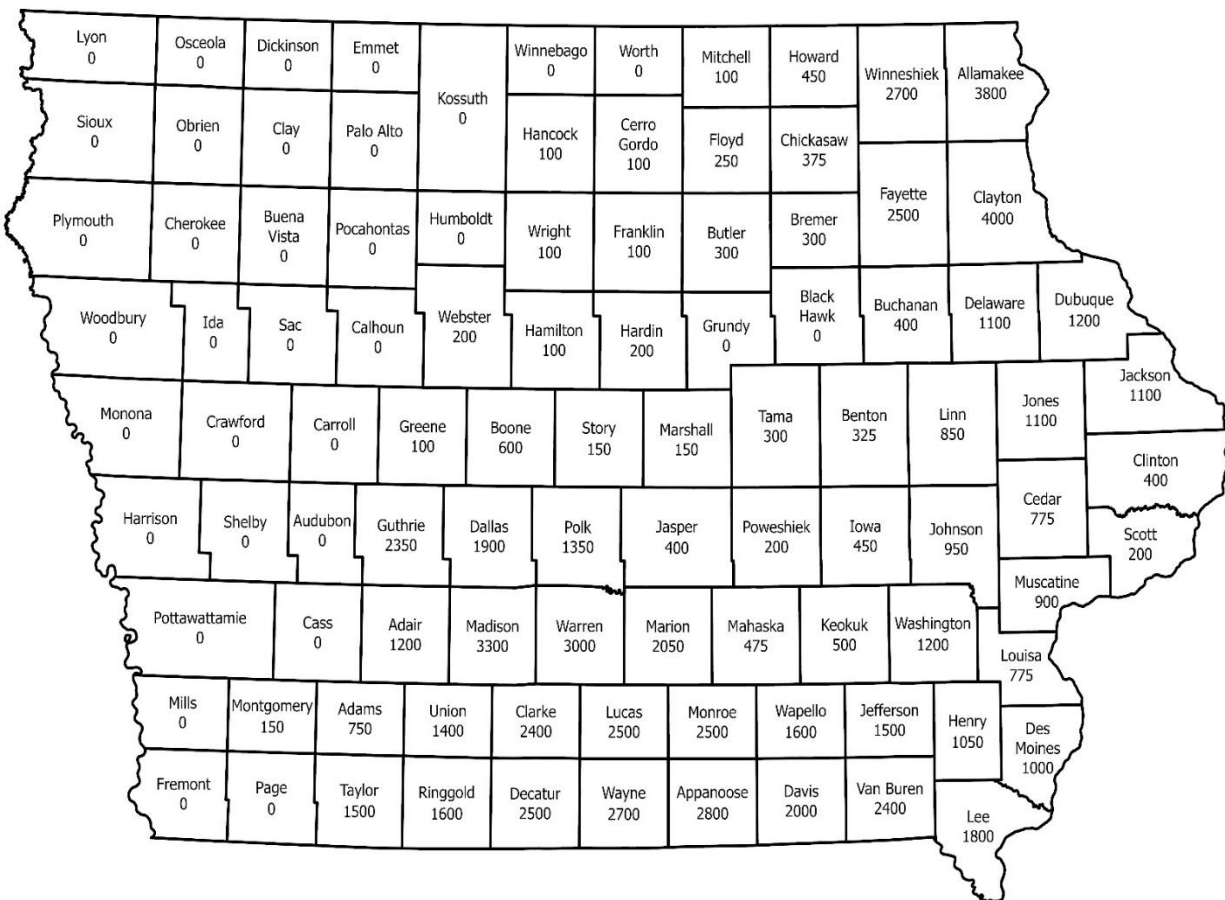
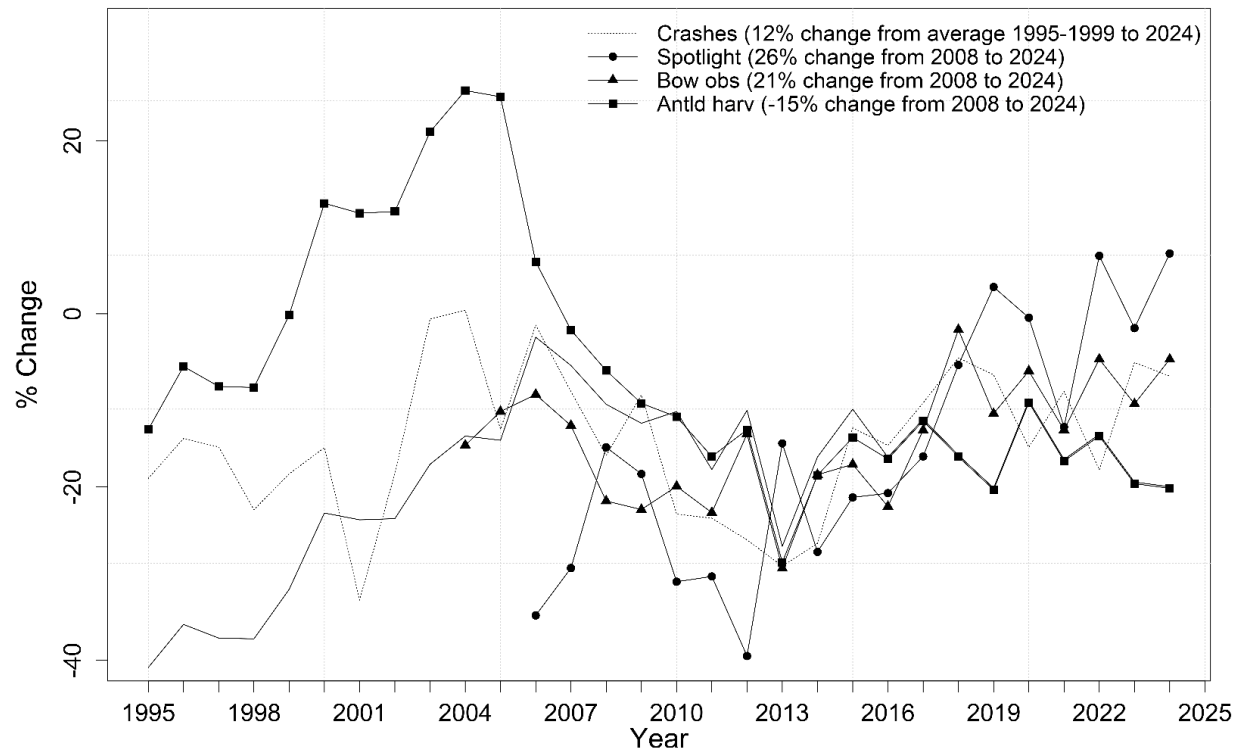


Figure 1.4. Resident antlerless-only deer quotas in each county offered for the 2024-2025 hunting year.



*KPBM = recovered deer-vehicle collisions (IADOT and Salvage Tags) divided by billion miles driven on secondary highways (IADOT estimate).

*Crashes = animal-related crashes reported to IADOT.

*Bow obs = bow hunter observation survey from start of archery season through Friday before 1st weekend in December.

*Antld harv = reported antlered deer harvest.

Figure 1.5. Deer population indices, 1995-2024.

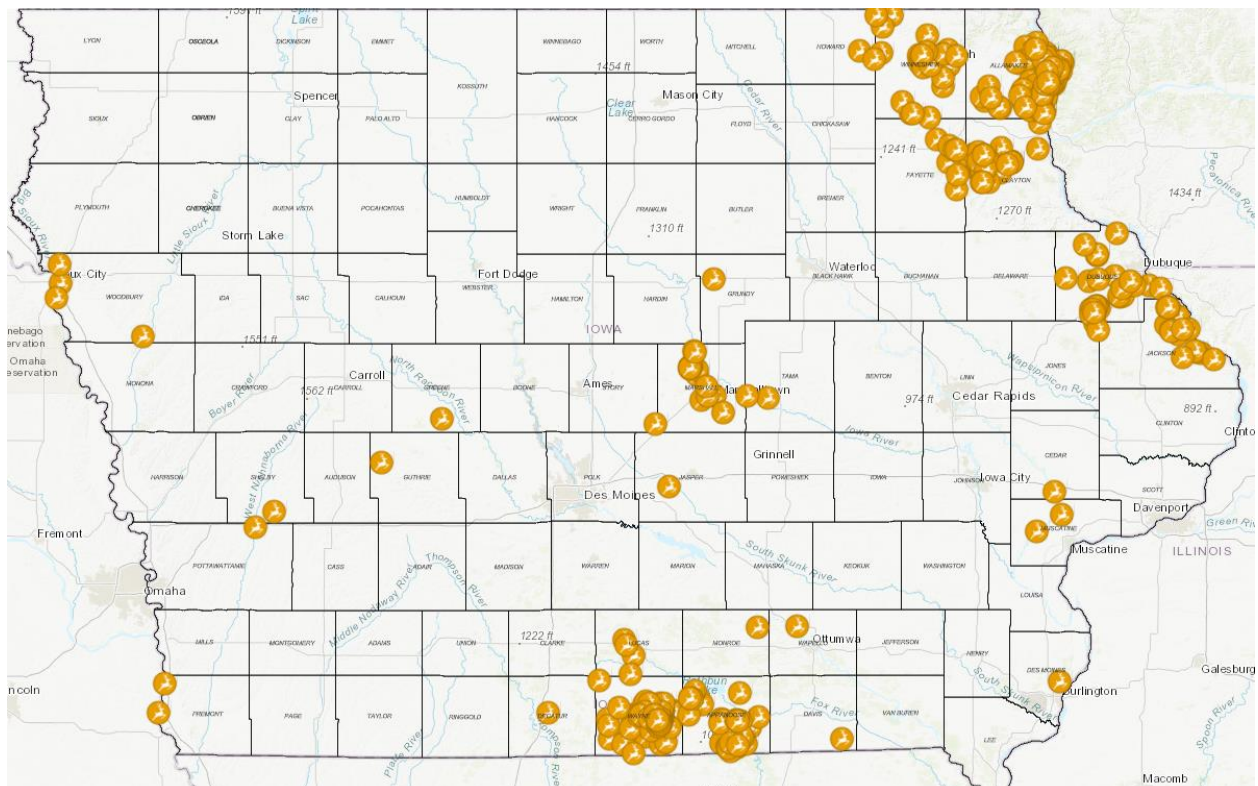


Figure 1.6. Locations of deer that tested positive for Chronic Wasting Disease (CWD) in Iowa, 2013-2024.

TABLES

Table 1.1. A summary of the number of licenses issued, hunters, reported harvest and success rates from the 2024-2025 season.

Season	Type	Licenses	Hunters	Reported Harvest					Success Rate ²	Percent Does
				Does	Antlered	Buttons	Sheds	Total		
Youth	Either-sex	13,288	13,287	1,444	3,065	283	29	4,821	36%	30%
	Antlerless	1,367	1,109	473	4	63	NA	540	40%	88%
	Total	14,655	14,396	1,917	3,069	346	29	5,361	37%	36%
Disabled	Either-sex	403	375	41	73	4	NA	118	29%	35%
	Antlerless	59	46	19	2	3	NA	24	41%	79%
	Total	462	421	60	75	7	0	142	31%	42%
Early Muzzleloader	Either-sex	5,776	5,775	607	1,149	91	13	1,860	32%	33%
	Antlerless	1,397	1,085	505	6	61	NA	572	41%	88%
	Antlerless	417	389	82	3	5	NA	90	22%	91%
	Total	7,590	7,249	1,194	1,158	157	13	2,522	33%	47%
Shotgun 1	Either-sex	41,776	41,768	4,111	10,246	1,007	153	15,517	37%	26%
	Antlerless	16,874	10,942	6,567	70	1,083	39	7,759	46%	85%
Shotgun 2	Either-sex	44,215	44,206	4,275	6,623	1,082	179	12,159	27%	35%
	Antlerless	17,762	11,216	5,457	43	893	68	6,461	36%	84%
	Total	120,627	108,132	20,410	16,982	4,065	439	41,896	35%	49%
Late Muzzleloader	Either-sex	17,321	17,314	1,178	2,143	179	90	3,590	21%	33%
	Antlerless	8,717	6,070	1,941	10	290	93	2,334	27%	83%
	Antlerless	1,366	1,281	231	4	25	5	265	19%	87%
	Total	27,404	24,665	3,350	2,157	494	188	6,189	23%	54%
Special LOT	Either-sex	30,764	30,728	1,373	4,996	289	126	6,784	22%	20%
	Antlerless	20,248	20,225	4,367	69	600	40	5,076	25%	86%
	Total	51,012	50,953	5,740	5,065	889	166	11,860	23%	48%
Archery	Either-sex	53,055	53,040	1,044	11,603	231	125	13,003	25%	8%
	Antlerless	21,342	15,007	4,971	69	658	10	5,708	27%	87%
	Antlerless	1,896	1,678	428	8	45	1	482	25%	89%
	Total	76,293	69,725	6,443	11,680	934	136	19,193	25%	34%
Senior Crossbow	Antlerless	1060	1059	212	5	32	1	250	24%	85%
Special Hunts	Antlerless	3,074	5,259	2,077	10	229	25	2,493	47%	89%
Depredation	Antlerless	6,723	2,464	3,133	24	360	34	3,551	53%	88%

Season	Type	Licenses	Hunters	Reported Harvest					Success Rate ²	Percent Does
				Does	Antlered	Buttons	Sheds	Total		
January Antlerless Nonresidents ³	Either-sex	387	109	192	8	6	1	207	53%	93%
	Antlerless	6,416	3,667	1,645	7	208	84	1,944	30%	85%
	Either-sex	6,057	6,055	49	2,492	14	22	2,577	43%	2%
	Antlerless	8,313	8,299	1,429	122	154	17	1,722	21%	83%
Total		336,535	160,513	48,943	43,034	8,141	1,164	101,282	30%	48%

¹LOT = landowner/tenant licenses; Paid = non-landowner/tenant licenses.

²Percent of licenses that reported harvested deer.

³Nonresident licenses for either shotgun 1, shotgun 2, archery, late muzzleloader, disabled hunter, or holiday antlerless-only season. Quota of 6,000 nonresident general deer/antlerless-only licenses, 35% of which can be archery licenses. An additional 4,500 antlerless-only licenses are available for either one of the shotgun seasons or the disabled hunter season.

Table 1.2. A comparison of the number of deer licenses issued and the reported harvest in 2024-25 with 2023-24 by season.

Season	2023 - 2024		2024 - 2025		% Change	
	Licenses	Harvest	Licenses	Harvest	Licenses	Harvest
Youth	14,210	4,758	14,655	5,361	3%	13%
Disabled	487	125	462	142	-5%	14%
Archery	88,256	22,448	76,334	19,193	-14%	-15%
Early Muzzleloader	9,806	3,264	7,590	2,522	-23%	-23%
Shotgun 1	61,358	23,491	58,650	23,276	-4%	-1%
Shotgun 2	66,577	19,852	67,977	20,656	2%	4%
Special LOT			51,015	11,893		
Late Muzzleloader	35,778	7,919	27,404	6,189	-23%	-22%
Special Hunts	2,928	1,439	3,074	1,580	5%	10%
Depredation	7,214	3,689	6,723	3,551	-7%	-4%
January Antlerless	5,826	1,509	6,416	1,944	10%	29%
Nonresidents	15,195	4,828	14,370	4,299	-5%	-11%
Total	349,336	104,271	336,535	101,282	-4%	-3%

Table 1.3. Historical data on reported deer harvest by license type (1953 to present).

Year	Regular Gun			Muzzleloader			Archery	Grand Total*
	Paid	Landowner	Total	Early	Late	Total		
1953	2,401	1,606	4,007				1	4,008
1954	1,827	586	2,413				10	2,423
1955	2,438	568	3,006				58	3,064
1956	2,000	561	2,561				117	2,678
1957	2,187	480	2,667				138	2,805
1958	2,141	588	2,729				162	2,891
1959	1,935	541	2,476				255	2,731
1960	3,188	804	3,992				277	4,269
1961	4,033	964	4,997				367	5,364
1962	4,281	1,018	5,299				404	5,703
1963	5,595	1,017	6,612				538	7,151
1964	7,274	1,750	9,024				670	9,694
1965	6,588	1,322	7,910				710	8,620
1966	9,070	1,672	10,742				579	11,321
1967	7,628	2,764	10,392				791	11,183
1968	9,051	3,890	12,941				830	13,771
1969	6,952	3,779	10,731				851	11,582
1970	8,398	4,345	12,743				1,037	13,780
1971	7,779	2,680	10,459				1,232	11,691
1972	7,747	2,738	10,485				1,328	11,813
1973	10,017	2,191	12,208				1,822	14,030
1974	11,720	4,097	15,817				2,173	17,990
1975	15,293	3,655	18,948				2,219	21,167
1976	11,728	2,529	14,257				2,350	16,607
1977	10,737	2,051	12,788				2,400	15,188
1978	12,815	2,353	15,168				2,957	18,125
1979	14,178	1,971	16,149				3,305	19,454
1980	16,511	2,346	18,857				3,803	22,660
1981	19,224	2,354	21,578				4,368	25,946
1982	19,269	2,472	21,741				4,720	26,461
1983	27,078	3,297	30,375				5,244	35,619
1984	29,912	3,537	33,449		307	307	5,599	39,355
1985	32,613	5,344	37,957		457	457	5,805	44,219
1986	41,352	10,378	51,730	349	728	1,077	9,895	62,702
1987	53,230	10,270	63,500	1,509	1,027	2,536	9,722	75,758
1988	66,757	13,298	80,055	1,835	1,294	3,129	9,897	93,756
1989	67,606	12,963	80,569	2,619	3,715	6,334	11,857	99,712
1990	69,101	9,095	78,196	2,819	5,884	8,703	10,146	98,002
1991	56,811	11,575	68,386	3,120	2,766	5,886	8,807	83,635
1992	50,822	10,453	61,275	3,316	3,231	6,564	8,814	77,684
1993	52,624	8,354	60,978	2,219	2,883	5,102	9,291	76,430
1994	59,054	8,735	67,789	2,610	3,196	5,806	12,040	87,231

Year	Regular Gun			Muzzleloader			Archery	Grand Total*
	Paid	Landowner	Total	Early	Late	Total		
1995	65,206	7,917	73,123	2,831	3,408	6,363	13,372	97,256
1996	71,577	10,896	82,473	2,895	4,558	7,453	12,314	107,632
1997	77,169	10,588	87,757	4,062	5,508	9,570	14,313	118,404
1998	73,165	9,989	83,154	4,448	5,343	9,791	12,302	112,608
1999	74,362	12,966	87,328	5,277	5,329	10,606	15,266	121,635
2000	77,743	13,189	90,932	4,585	5,936	10,521	17,727	126,535
2001	82,721	14,801	97,522	4,593	7,320	11,913	18,798	136,655
2002	77,940	18,932	96,872	5,091	7,772	12,863	20,703	140,490
2003	96,757	25,353	122,110	6,155	12,049	18,204	26,486	182,856
2004	97,830	26,333	124,163	6,818	13,550	20,368	30,025	194,512
2005	96,110	27,988	124,098	7,209	13,930	21,139	32,986	211,451
2006	76,218	14,956	91,174	5,431	8,698	14,129	22,008	150,552
2007	67,175	13,862	81,037	4,462	10,530	14,992	22,240	146,214
2008	63,330	12,762	76,092	4,342	10,254	14,596	21,793	142,194
2009	58,801	12,630	71,431	4,495	9,482	13,977	23,172	136,504
2010	56,511	11,455	67,966	4,026	8,838	12,864	21,154	127,094
2011	52,130	11,009	63,139	4,427	8,165	12,592	21,983	121,407
2012	49,110	10,931	60,041	3,896	10,823	14,719	21,981	115,608
2013	42,442	9,271	51,713	4,027	6,828	10,855	20,319	99,414
2014	44,910	10,701	55,611	3,700	8,793	12,493	21,128	101,595
2015	45,214	11,041	56,255	4,042	9,604	13,646	22,489	105,401
2016	43,205	10,358	53,563	3,450	9,560	13,010	22,389	101,397
2017	46,559	11,161	57,720	3,423	9,629	13,052	22,665	105,578
2018	47,401	11,837	59,238	3,594	9,885	13,479	21,271	107,857
2019	43,154	9,967	53,121	3,347	7,564	10,911	22,142	99,999
2020	46,167	11,091	57,258	4,074	9,505	13,579	23,746	109,544
2021	44,100	10,203	54,303	3,473	8,407	11,880	21,257	102,800
2022	45,923	10,863	56,795	3,367	9,423	12,790	21,646	109,600
2023	43,343	10,187	53,530	3,264	7,919	11,183	22,448	104,274
2024	43,932	11,893 ²	55,825	2,522	6,189	8,711	19,193	101,282

¹Grand Total includes special management unit hunts, nonresidents and youth. Harvest estimates from 2005 and prior are not comparable to subsequent years.

²2024 marked the first year Landowner-tenant any-deer licenses were able to be used in any season without designation.

Table 1.4. Total reported deer kill by county during the 2024-2025 deer season.

County	Antlered Bucks	Does	Button Bucks	Shed-antlered Bucks	Total	Percent of kill		Antld. Kill /Sq. Mile
						Does	Antlered Bucks	
Adair	338	373	58	7	776	48	44	0.59
Adams	280	234	29	3	546	43	51	0.66
Allamakee	1350	1950	246	52	3598	54	38	2.12
Appanoose	810	1057	186	17	2070	51	39	1.55
Audubon	116	64	19	1	200	32	58	0.26
Benton	466	540	102	17	1125	48	41	0.65
Black Hawk	440	410	63	3	916	45	48	0.77
Boone	545	678	111	16	1350	50	40	0.95
Bremer	495	517	86	10	1108	47	45	1.13
Buchanan	421	465	87	8	981	47	43	0.74
Buena Vista	94	34	4	2	134	25	70	0.16
Butler	527	485	74	6	1092	44	48	0.91
Calhoun	47	12	6	0	65	18	72	0.08
Carroll	132	53	11	3	199	27	66	0.23
Cass	184	82	14	3	283	29	65	0.33
Cedar	497	504	92	19	1112	45	45	0.85
Cerro Gordo	291	248	41	3	583	43	50	0.51
Cherokee	144	75	20	1	240	31	60	0.25
Chickasaw	447	526	102	12	1087	48	41	0.89
Clarke	607	727	128	11	1473	49	41	1.41
Clay	245	152	27	3	427	36	57	0.43
Clayton	1633	2301	316	68	4318	53	38	2.1
Clinton	651	548	106	18	1323	41	49	0.94
Crawford	140	46	12	3	201	23	70	0.2
Dallas	493	692	133	23	1341	52	37	0.83
Davis	576	996	188	16	1776	56	32	1.13
Decatur	612	706	103	17	1438	49	43	1.15
Delaware	567	925	182	26	1700	54	33	0.99
Des Moines	534	798	133	17	1482	54	36	1.31
Dickinson	136	97	22	0	255	38	53	0.36
Dubuque	911	1318	235	16	2480	53	37	1.49
Emmet	149	69	11	1	230	30	65	0.38
Fayette	802	985	155	25	1967	50	41	1.1
Floyd	401	484	79	17	981	49	41	0.8
Franklin	266	210	47	7	530	40	50	0.45
Fremont	320	92	12	8	432	21	74	0.61
Greene	184	121	40	7	352	34	52	0.32
Grundy	99	57	8	3	167	34	59	0.2
Guthrie	654	954	148	17	1773	54	37	1.1
Hamilton	200	150	22	2	374	40	53	0.35
Hancock	131	136	15	3	285	48	46	0.23

County	Antlered Bucks	Does	Button Bucks	Shed-antlered Bucks	Total	Percent of kill		Antld. Kill /Sq. Mile
						Does	Antlered Bucks	
Hardin	432	422	55	15	924	46	47	0.75
Harrison	329	150	17	4	500	30	66	0.47
Henry	514	709	111	16	1350	53	38	1.17
Howard	321	412	66	11	810	51	40	0.68
Humboldt	121	62	9	0	192	32	63	0.28
Ida	50	21	4	1	76	28	66	0.12
Iowa	712	615	124	21	1472	42	48	1.22
Jackson	1045	1166	214	20	2445	48	43	1.62
Jasper	451	308	72	15	846	36	53	0.61
Jefferson	516	809	123	15	1463	55	35	1.18
Johnson	750	889	147	17	1803	49	42	1.21
Jones	755	1020	195	16	1986	51	38	1.29
Keokuk	517	436	73	18	1044	42	50	0.89
Kossuth	225	125	25	4	379	33	59	0.23
Lee	828	1229	226	21	2304	53	36	1.57
Linn	858	1145	178	26	2207	52	39	1.2
Louisa	605	656	116	18	1395	47	43	1.5
Lucas	735	857	141	19	1752	49	42	1.69
Lyon	164	63	16	1	244	26	67	0.28
Madison	907	1431	183	31	2552	56	36	1.61
Mahaska	432	446	68	15	961	46	45	0.76
Marion	716	897	134	17	1764	51	41	1.26
Marshall	302	210	31	3	546	38	55	0.53
Mills	209	82	6	4	301	27	69	0.47
Mitchell	395	322	62	6	785	41	50	0.85
Monona	234	93	17	3	347	27	67	0.33
Monroe	604	951	130	35	1720	55	35	1.39
Montgomery	215	123	19	2	359	34	60	0.51
Muscatine	559	661	138	21	1379	48	41	1.26
Obrien	100	57	11	0	168	34	60	0.17
Osceola	91	33	7	1	132	25	69	0.23
Page	215	81	12	2	310	26	69	0.4
Palo Alto	136	88	17	3	244	36	56	0.24
Plymouth	172	70	8	3	253	28	68	0.2
Pocahontas	90	37	10	0	137	27	66	0.15
Polk	327	555	101	14	997	56	33	0.55
Pottawattamie	272	131	25	11	439	30	62	0.28
Poweshiek	392	275	45	6	718	38	55	0.67
Ringgold	568	677	119	12	1376	49	41	1.06
Sac	141	71	14	1	227	31	62	0.24
Scott	345	377	62	11	795	47	43	0.76
Shelby	110	38	2	4	154	25	71	0.19

County	Antlered Bucks	Does	Button Bucks	Shed-antlered Bucks	Total	Percent of kill		Antld. Kill /Sq. Mile
						Does	Antlered Bucks	
Sioux	102	43	11	2	158	27	65	0.13
Story	267	224	36	8	535	42	50	0.47
Tama	545	573	95	17	1230	47	44	0.76
Taylor	635	654	74	9	1372	48	46	1.2
Union	430	553	84	7	1074	51	40	1.01
Van Buren	833	1264	244	22	2363	53	35	1.71
Wapello	508	670	107	20	1305	51	39	1.16
Warren	857	1135	230	18	2240	51	38	1.5
Washington	598	863	147	14	1622	53	37	1.05
Wayne	627	866	139	33	1665	52	38	1.18
Webster	440	413	77	7	937	44	47	0.61
Winnebago	174	94	13	6	287	33	61	0.43
Winneshiek	895	1410	207	37	2549	55	35	1.3
Woodbury	265	133	17	3	418	32	63	0.3
Worth	255	187	23	6	471	40	54	0.64
Wright	191	152	20	1	364	42	52	0.33
Total Reported	43,034	48,934	8,141	1,164	101,282	48%	43%	0.78

Table 1.5. Results from controlled hunts in special management deer zone 2024-2025.

Deer Management Zone	Tags Available	Tags Sold	Harvest
AMANA COLONIES ZONE	100	100	46
AMES (CITY)	75	33	13
AMES (PERIMETER)	50	43	11
Backbone State Park	200	135	87
OSKALOOSA (CITY)	100	40	19
BETTENDORF & RIVERDALE	125	66	21
CEDAR RAPIDS (CITY)	400	167	106
CLINTON (CITY)	75	41	14
CORALVILLE (CITY)	200	91	40
DAVENPORT (CITY)	250	137	72
DENISON (CITY)	50	0	0
DE SOTO NWR	30	24	3
DUBUQUE (CITY)	225	216	118
DUBUQUE (CWD PERIMETER)	350	337	121
ELK ROCK STATE PARK	25	20	8
LAKE AHQUABI STATE PARK	30	15	1
GREEN VALLEY STATE PARK	35	27	7
IAAP	1200	382	191
IOWA FALLS (PERIMETER)	30	4	0
IOWA FALLS (CITY)	80	25	19
CORALVILLE (PERIMETER)	600	396	114
KENT PARK (ARCHERY)	100	0	0
LACEY-KEOSAUQUA STATE PAR	75	36	16
LAKE DARLING STATE PARK	100	60	15
LAKE MACBRIDE STATE PARK	50	36	12
LAKE WAPELLO STATE PARK	50	40	2
LEDGES STATE PARK	40	22	9
CEDAR RAPIDS (PERIMETER)	500	306	118
MOUNT PLEASANT (CITY)	50	8	4
ELDORA (CITY)	50	22	9
MUSCATINE (CITY)	150	80	34
OTTUMWA (CITY)	175	127	92
PIKES PEAK S.P. /MCGREGOR	100	51	39
PINE LAKE STATE PARK	30	24	12
POLK-DALLAS ARCHERY ONLY	1000	533	285
SCOTT COUNTY PARK	50	42	28
SPRINGBROOK STATE PARK	10	9	4
SQUAW CREEK PARK	100	89	52
WATERLOO & CEDAR FALLS	300	279	158
WILDCAT DEN STATE PARK	50	17	5
JEFFERSON COUNTY PARK	25	13	9
JONES COUNTY CENTRAL PARK	50	9	0
SMITH WILDLIFE AREA	3	3	2

Deer Management Zone	Tags Available	Tags Sold	Harvest
SMITH WILDLIFE AREA	3	0	0
SMITH WILDLIFE AREA	3	2	0
COUNCIL BLUFFS (CITY)	300	81	31
KNOXVILLE (CITY)	25	1	0
MARSHALLTOWN (CITY)	60	26	16
MARSHALLTOWN (PERIMETER)	40	21	4
ATLANTIC	50	11	3
STONE STATE PARK	75	26	10
KEOKUK (CITY)	100	80	48
HONEY CREEK STATE PARK	75	27	7
HARPERS FERRY (CWD PERIM)	300	67	52
CORYDON (CWD PERIMETER)	350	37	28
BOBWHITE STATE PARK	100	9	1
MASON CITY (CITY)	175	70	44
BURLINGTON (CITY)	200	73	44
IOWA CITY (CITY)	200	60	40
ALLAMAKEE COUNTY CWD (PERIMETER)	900	24	7
CLAYTON COUNTY CWD (PERIMETER)	750	11	2
DUBUQUE/JACKSON/JONES (CWD PERIMETER)	300	188	57
WAYNE COUNTY CWD (PERIMETER)	50	2	1
WINNESHIEK COUNTY CWD (PERIMETER)	400	21	7
SMITH WILDLIFE AREA	10	10	2
PANORAMA (PERIMETER)	200	121	65
FORT DODGE	100	59	25
DUBUQUE CWD (PERIMETER)	150	54	32
DECATUR EAST COUNTY (CWD PERIMETER)	500	0	0
LUCAS COUNTY (CWD PERIMETER)	500	10	5
MONROE COUNTY (CWD PERIMETER)	500	48	38
APPANOOSE COUNTY (CWD PERIMETER)	500	15	8
TOTAL	14,204	5,259	2,493

Table 1.6. Results of deer population surveys (1976-present)

Year	Spotlight Survey		Aerial Survey		Traffic Kill	Traffic Kill Per Billion Vehicle Mi.		Bowhunter Obs (Deer per 1000 hrs)	
	Mean Count ^a	Percent Change	Weighted Count ^b	Percent Change		Number	Percent Change	Number	Percent Change
1976			-	-	2,537	225	-1%		
1977			-	-	2,929	252	12%		
1978			-	-	2,872	241	-4%		
1979			-	-	3,005	259	7%		
1980			-	-	3,743	335	29%		
1981			-	-	4,164	365	9%		
1982			-	-	4,805	412	13%		
1983			5,903	-	5,335	448	9%		
1984			6,387	8%	6,177	500	12%		
1985			7,607	19%	5,925	495	-1%		
1986			9,790	29%	7,225	593	20%		
1987			-	-	8,440	678	14%		
1988			10,289	^c	9,248	707	4%		
1989			9,672	-6%	8,914	655	-7%		
1990			7,070	-27%	8,799	607	-7%		
1991			9,191	30%	8,428	590	-3%		
1992			8,235	-10%	9,135	616	4%		
1993			8,680	5%	9,576	624	1%		
1994			10,483	21%	10,438	663	6%		
1995			10,877	4%	11,167	699	5%		
1996			12,051	11%	12,276	748	7%		
1997			13,902	15%	13,148	778	4%		
1998			12,651	-9%	12,427	714	-8%		
1999			14,928	18%	11,366	637	-11%		
2000			15,375	3%	11,114	642	1%		
2001			15,793	3%	14,243	799	24%		
2002			13,107	-17%	12,377	662	-17%		
2003			15,676	20%	13,720	726	10%		
2004			18,028	15%	15,361	803	11%	1,455	
2005			15,324	-15%	14,364	760	-5%	1,533	5%
2006	55		12,565	-18%	14,940	783	3%	1,564	2%
2007	59	8%	13,445	7%	13,730	720	-8%	1,528	-2%
2008	71	20%	13,427	0%	10,961	602	-16%	1,392	-9%
2009	68	-4%	13,528	1%	13,518	726	21%	1,359	-2%
2010	58	-15%	13,591	0%	10,153	547	-25%	1,418	4%
2011	58	1%	13,707	1%	10,626	570	4%	1,368	-4%
2012	51	-13%	discontinued		10,358	554	-3%	1,524	11%
2013	71	40%			9,174	481	-13%	1,241	-18%
2014	61	-14%			9,085	471	-2%	1,417	14%
2015	66	8%			9,418	478	1%	1,447	2%
2016	66	0%			9,041	459	-4%	1,336	-7%

Year	Spotlight Survey		Aerial Survey		Traffic Kill	Traffic Kill Per Billion Vehicle Mi.		Bowhunter Obs (Deer per 1000 hrs)	
	Mean Count ^a	Percent Change	Weighted Count ^b	Percent Change		Number	Percent Change	Number	Percent Change
2017	70	4%			8,609	430	-5%	1,493	12%
2018	79	13%			8,017	312	-28%	1,673	12%
2019	86	9%			7,851	248	-21%	1,543	-8%
2020	83	-3%			7,145	229	-8%	1,627	5%
2021	73	-12%			7,690	discontinued		1,502	-8%
2022	89	24%			6,924			1,814	9%
2023	79	-11%			7,972			1,715	-5%
2024	88	11%			7,838			1,814	6%
2025	80	-10%							

^a Mean count represents average number counted per 25 miles of transect

^b adjusted for missing counts

^c change from 1986 to 1988

^d Total number observed per 1,000 hours hunted

**Data missing at time of report