

Farmington, IA



2014 Management Plan
Prepared by Ray Lehn
Bureau of Forestry, Iowa DNR



Table of Contents

| | |
|--|-----------|
| Executive Summary | 3 |
| Overview | 3 |
| Inventory and Results | 3 |
| Recommendations | 3 |
| Introduction | 4 |
| Inventory | 4 |
| Inventory Results | 5 |
| <i>Annual Benefits</i> | 5 |
| Annual Energy Benefits | 5 |
| Annual Stormwater Benefits | 5 |
| Annual Air Quality Benefits | 5 |
| Annual Carbon Benefits | 5 |
| Annual Aesthetics Benefits | 5 |
| Financial Summary of all Benefits | 5 |
| <i>Forest Structure</i> | 6 |
| Species Distribution | 6 |
| Age Class | 6 |
| Condition: Wood and Foliage | 6 |
| Management Needs | 7 |
| Canopy Cover | 7 |
| Land Use and Location | 7 |
| Recommendations | 7 |
| Risk Management | 7 |
| Pruning Cycle | 8 |
| Planting | 8 |
| Continual Monitoring | 8 |
| Six Year Maintenance Plan with No Additional Funding | 9 |
| Emerald Ash Borer | 9 |
| Ash Tree Removal | 9 |
| EAB Quarantines | 10 |
| Wood Disposal | 10 |
| Canopy Replacement | 11 |
| Postponed Work | 11 |
| Monitoring | 11 |
| Private Ash Trees | 11 |
| Budget | 12 |
| Works Cited | 13 |
| Appendix A: i-Tree Data | 14 |
| Appendix B: ArcGIS Mapping | 22 |
| Appendix C: Sampl Tree Ordinances and Planting List | 27 |

Executive Summary

Overview

This plan was developed to assist the City of Farmington with managing its urban forest, including budgeting and future planning. Trees can provide a multitude of benefits to the community, and sound management allows a community to best take advantage of these benefits. Management is especially important considering the serious threats posed by forest pests such as the emerald ash borer (EAB). EAB is an invasive insect imported from Eastern Asia on wood shipping crates that kills all species of ash trees (this does not include mountain ash). There is a strong possibility that 4% of Farmington's city owned trees (ash) will die once EAB becomes established in the community. With proper planning and management, the costs of removing dead and dying trees can be extended over years, mitigating public safety issues.

Inventory and Results

In 2013, a tree inventory was conducted using Global Positioning System (GPS) data collectors. The inventory was a complete inventory of street trees. Below are some key findings of the 229 trees inventoried.

- Farmington's trees provide \$46,395 of benefits annually, an average of \$202 a tree
- There are over 30 species of trees
- The top four genus are: Maple 60%, Elm 8.7%, Apple 4.8%, and Catalpa 4.8%
- 11% of trees are in need of some type of management
- 7 trees are recommended for removal

Recommendations

The core recommendations are detailed in the Recommendations Section. The Emerald Ash Borer Plan includes management recommendations as well. Below are some key recommendations.

- Of the 7 trees needing removal, 4 trees are over 24 inches in diameter at 4.5 ft and must be addressed immediately *City ownership of the trees recommended for removal should be verified prior to any removal*
- 1 of the 9 ash trees is in need of follow up because it is displaying signs and symptoms associated with EAB (canopy dieback)
- All trees should be pruned on a routine schedule- one third of the city every other year
- Plant a diverse mix of trees that do not include: ash, maple, cottonwood, poplar, box elder, Chinese elm, evergreen, willow or black walnut
- Check ash trees with a visual survey yearly
- With the proposed budget it could take 4 years to remove ash – Suggestion: adopt proposed budget and apply for grants to plant replacement trees
- City should consider adopting a Tree Ordinance similar to Appendix C

Introduction

This plan was developed to assist Farmington with the management, budgeting and future planning of their urban forest. Across the state, forestry budgets continue to decrease with more and more of that money spent on tree removal. With the anticipated arrival of Emerald Ash Borer (EAB), an invasive pest that kills native ash trees, it is time to prepare for the increased costs of tree removal and replacement planting. With proper planning and management of the current canopy in Farmington, these costs can be extended over years and public safety issues from dead and dying ash trees mitigated.

Trees are an important component of Farmington's infrastructure and one of the greatest assets to the community. The benefits of trees are immense. Trees provide the community with improved air quality, stormwater runoff interception, energy conservation, lower traffic speeds, increased property values, reduced crime, improved mental health and create a desirable place to live, to name just a few benefits. It is essential that these benefits be maintained for the people of Farmington and future generations through good urban forestry management.

Good urban forestry management involves setting goals and developing management strategies to achieve these goals. An essential part of developing management strategies is a comprehensive public tree inventory. The inventory supplies information that will be used for maintenance, removal schedules, tree planting and budgeting. Basing actions on this information will help meet Farmington's urban forestry goals.

Inventory

In 2013, a tree inventory was conducted that included 100% of the city owned trees on streets. The tree data was collected using a handheld Global Positioning System (GPS) receiver. The data collector gives Geographic Information Systems (GIS) coordinates with an accuracy of 3 meters, which can be used in Arc GIS as an active GIS data layer. Because the inventory is a digital document the data can be updated with new information and become a working document.

The programming used to collect tree information on the data collectors was written to be compatible with a state-of-the-art software suite called i-Tree. i-Tree was developed by the USDA Forest Service to quantify the structure of community trees and the environmental services that trees provide. The i-Tree suite is a public domain which can be accessed for free.

To quantify the urban forest structure and benefits, specific data is collected for each tree. This data includes: location, land use, species, diameter at 4.5 ft, recommended maintenance, priority of that maintenance, leaf health, and wood condition. Additionally, signs and symptoms of EAB were noted for all ash trees. The signs and symptoms noted were canopy dieback, epicormic shoots, bark splitting, D-shaped borer exit holes, and wood pecker damage.

Inventory Results

The data collected for the 229 city trees was entered into the USDA Forest service program Street Tree Resource Analysis Tool for Urban forestry Management (STRATUM), part of the i-Tree suite. The following are results from the i-Tree STRATUM analysis.

Annual Benefits

Annual Energy Benefits

Trees conserve energy by shading buildings and blocking winds. Farmington's trees reduce energy related costs by approximately \$11,588 annually (Appendix A, Table 1). These savings are both in Electricity (55.9 MWh) and in Natural Gas (7,497.6 Therms).

Annual Stormwater Benefits

Farmington's trees intercept about 645,358 gallons of rainfall or snow melt a year (Appendix A, Table 2). This interception provides \$17,490 of benefits to the city.

Annual Air Quality Benefits

Air quality is a persistent public health issue in Iowa. The urban forest improves air quality by removing pollutants, lowering air temperature, and reducing energy consumption, which in turn reduces emissions from power plants, and emitting volatile organic matter (ozone). In Farmington, it is estimated that trees remove 725.6 lbs of air pollution (ozone (O₃), particulate matter less than 10 microns (PM₁₀), carbon monoxide (CO), nitrogen dioxide (NO₂), and sulfur dioxide (SO₂)) per year with a net value of \$2,045 (Appendix A, Table 3).

Annual Carbon Benefits

Carbon sequestration and storage reduce the amount of carbon in the atmosphere, mitigating climate change. In Farmington, trees sequester about 156,370 lbs of carbon a year with an associated value of \$1,780 (Appendix A, Table 5). In addition, the trees store 2,636,859 lbs of carbon, with a yearly benefit of \$19,776 (Appendix A, Table 4).

Annual Aesthetics Benefits

Social benefits of trees are hard to capture. The analysis does have a calculation for this area that includes: aesthetic value, property values, lowered rates of mental illness and crime, city livability and much more. Farmington receives \$13,491 in annual social benefits from trees (Appendix A, Table 6).

Financial Summary of all Benefits

According to the USDA Forest Service i-Tree STRATUM analysis, Farmington's trees provide \$46,395 of benefits annually. Benefits of individual trees vary based on size, species, health and

location, but on average each of the 229 trees in Farmington provide approximately \$202 annually (Appendix A, Table 7).

Forest Structure

Species Distribution

Farmington has over 30 different tree species along city streets and parks (Appendix A, Figure 1).

The distribution of trees by genus is as follows:

| | | |
|---------------|-----|------|
| Maple | 138 | 60% |
| Elm | 20 | 8.7% |
| Apple | 11 | 4.8% |
| Catalpa | 11 | 4.8% |
| Ash | 9 | 3.9% |
| Oak | 7 | 3.1% |
| Walnut | 5 | 2.2% |
| Sycamore | 5 | 2.2% |
| Ohio Buckeye | 5 | 2.2% |
| Other species | 18 | 7.9% |

Age Class

A large percentage of Farmington's trees (35%) are over 24 inches in diameter at 4.5 ft., with only 11% under 6 inches in diameter. (Appendix A, Figure 2). For age, it is preferred that the highest amounts of trees are in the smallest size category (a downward slope) to prepare for natural mortality and to maintain canopy cover. Farmington's size curve is on the large side, indicating an older than average stand.

Condition: Wood and Foliage

Both wood condition and leaf condition are good indicators of the overall health of the urban forest. The foliage condition results for Farmington indicate that 89% of the trees are in good health, with only 3% of the foliage in poor health, dead or dying (Appendix A, Figure 3 & Appendix B, Figure 3). Also, 60% of Farmington's trees are in good health for wood condition (appendix A, Figure 4 & Appendix B, Figure 3). Wood condition that is in poor health, dead or dying is about 12% of the population. This 12% is an estimate of trees that need management follow up.

Management Needs

The following outlines the specific management needs of the street and park trees by number of trees and percent of canopy (Appendix B, Figure 3).

| | | |
|-----------------|----|------|
| Crown Cleaning | 18 | 7.9% |
| Tree Removal | 7 | 3.1% |
| Crown Reduction | 1 | <1% |

Canopy Cover

The canopy cover of Farmington is approximately 6.6 acres (Appendix A, Figure 5). According to the 2000 census, Farmington occupies 300 acres. Thus the canopy cover on city land is about 2.2%.

Land Use and Location

The majority of Farmington's city and park trees are in planting strips in single family residential neighborhoods (Appendix A, Figure 6 & Appendix A, Figure 7). The following describes the land use and locations for the street and park trees.

Land Use

| | |
|---------------------------|-----|
| Single family residential | 92% |
| Park/vacant/other | 5% |
| Multifamily residential | 3% |

Location

| | |
|----------------|-----|
| Planting strip | 70% |
| Front yard | 30% |

Recommendations

Risk Management

Hazardous trees can be a significant threat to both people and property. Trees that are dead or dying, or that have large issues such as trunk cracks longer than 18 inches should be removed. Broken branches and branches that interfere with motorist's vision of pedestrians, vehicles, traffic signs and signals, etc. should be removed.

Hazardous trees

Farmington has no critical concern trees identified as needing immediate removal, but does have 7 trees designated for removal that should be addressed in the next two years. These trees can be seen on the Location of Trees with Recommended Maintenance map (Appendix B, Figure 4). It is recommended to start with the large diameter critical concern trees first. There are 4 trees over 24 inches in diameter at 4.5 ft that should be addressed soon. Please refer to

the six year maintenance plan at the end of this section. After all of the immediate concern trees are addressed, there should be follow up on the trees marked as needing maintenance that do not include trimming. There are a total of 19 trees with these needs.

Poor tree species

After the removal of the immediate concern trees, ash trees in poor health should be assessed for removal (Appendix B, Figure 3 & Appendix B, Figure 4). Of the 7 removals, none are ash trees. There are a total of 9 ash trees, and 1 of those has signs and symptoms that have been associated with EAB. The remaining ash trees appear to be in good health. **City ownership of the trees recommended for removal should be verified prior to any removal**

Pruning Cycle

Proper pruning can extend the life and good health of trees, as well as reduce public safety issues. In the Management Needs section of the Findings there are four main maintenance issues to be addressed: routine pruning, crown cleaning, crown raising, and crown reduction. Crown cleaning removes dead, diseased, and damaged limbs. Crown raising is the removal of lower branches that are 2 inches in diameter or larger in the case of providing clearance for pedestrians or vehicles. Crown reduction is removing individual limbs from structures or utility wires. It is recommended that all trees be pruned on a routine schedule every five to seven years. Please refer to the six year maintenance plan for further information.

Planting

Most of the planting over the next 5 years will replace the trees that are removed. It is recommended to plant 1.2 trees for every tree removed, since survival rates will not be 100%. Please refer to the six year maintenance plan at the end of this section. It is not essential that the new trees be planted in the same location of the trees being removed. However, maintaining the same number of trees helps ensure continuation of the benefits of the existing forest in Farmington.

It is important to plant a diverse mix of species in the urban forest to maintain canopy health, since most insects and diseases target a genus (ash) or species (green ash) of trees. Current diversity recommendations advise that a genus (i.e. maple, oak) not make up more than 20% of the urban forest and a single species (i.e. silver maple, sugar maple, white oak, bur oak) not make up more than 10% of the total urban forest. Presently, the forest is heavily planted with Maple (60%) (Appendix A, Figure 1). Maples should not be planted until this percentage can be lowered. Also, ash trees have not been recommended since 2002, due to the threat of EAB. Other species to avoid because they are public nuisances include: cottonwood, poplar, box elder, Chinese elm, evergreen, willow or black walnut. All trees planted should meet the restrictions in the sample city ordinance (Appendix C).

Continual Monitoring

Due to the threat of EAB, it is important to continuously check the health of ash trees. It is recommended that ash trees be checked with a visual survey every year for tree death and for

the following signs and symptoms: canopy dieback, epicormic shoots, bark splitting, D-shaped borer exit holes, and wood pecker damage.

Six Year Maintenance Plan

Year 1

Removal: 4 largest immediate concern trees
Planting and Replacement: 5 or 6 trees to be planted in open locations
Visual Survey for signs and symptoms of EAB

Year 2

Removal: 3 immediate concern trees and 1 additional ash tree with poor health
Planting and Replacement: 5 or 6 trees in open locations from year one removals
Routine trimming: Contract to trim 1/3 of the city trees
Visual Survey for signs and symptoms of EAB

Year 3

Removal: 4 trees - removal of any new critical concern trees and ash in poor health
Planting and Replacement: 5 or 6 trees to be planted in open locations and locations from previous removals
Visual Survey for signs and symptoms of EAB

Year 4

Removal: 4 trees - removal of any new critical concern trees and ash in poor health
Planting and Replacement: 5 or 6 trees in open locations from previous removals
Routine trimming: Contract to trim 1/3 of the city trees
Visual Survey for signs and symptoms of EAB

Year 5

Removal: 4 trees - removal of any new critical concern trees and ash in poor health
Planting and Replacement: 5 or 6 trees to be planted in open locations and locations from previous removals
Visual Survey for signs and symptoms of EAB

Year 6

Removal: 4 trees - removal of any new critical concern trees and ash in poor health
Planting and Replacement: 5 or 6 trees in open locations from previous removals
Routine trimming: Contract to trim 1/3 of the city trees
Visual Survey for signs and symptoms of EAB

It will take approximately 4 years to remove all ash and current immediate concern trees with the proposed budget. EAB could potentially kill all ash within 4 years of its arrival.

Emerald Ash Borer Plan

Ash Tree Removal

Tree removal will be prioritized with dead, dying, hazardous trees to be removed first (Appendix B, Figure 4). Next will be all ash in poor condition and displaying signs and symptoms

of EAB (Appendix B, Figure 2 & Appendix B, Figure 3). *City ownership of the tree recommended for removal should be verified prior to any removal*

Treatment of Ash Trees

Chemical treatment can be effective, spreading removal costs out over several years while allowing trees to continue to provide benefits. However, treatment is not recommended if EAB is more than 15 miles away from the community. For more information on the cost of treatment strategies visit <http://extension.entm.purdue.edu/treecomputer/>

EAB Quarantines

EAB is an extremely destructive plant pest and it is responsible for the death and decline of over 25 million ash trees. Ash in both forested and urban settings constitute a significant portion of the canopy cover in the United States. Current tools to detect, control, suppress and eradicate this pest are not as robust as the USDA would desire. In order to stay ahead of this hard to detect beetle, the USDA is attempting to contain the beetle before it spreads beyond its known positions by regulating articles.

A regulated article under the USDA's quarantine includes any of the following items:

- emerald ash borer
- firewood of all hardwood species (for example ash, oak, maple and hickory)
- nursery stock and green lumber of ash
- any other ash material, whether living, dead, cut or fallen, including logs, stumps, roots, branches, as well as composted and not composted chips of the genus ash (Mountain ash is not included)

In addition, any other article, product or means of conveyance not listed above may be designated as a regulated article if a USDA inspector determines that it presents a risk of spreading EAB once a quarantine is in effect for your county.

Wood Disposal

A very important aspect of planning is determining how wood infested with EAB will be handled, keeping in mind that quarantines will restrict its movement. Consider who will cut and haul the dead and dying trees? Is there an accessible, secured site big enough to store and sort the hundreds of trees and the associated brush and chips? How will wood be disposed of or utilized? Do you have equipment capable of handling the amount and size of ash trees your tree inventory has identified? Once your county is under quarantine for EAB, contact USDA-APHIS-PPQ at 515-251-4083 or visit the website http://www.aphis.usda.gov/plant_health/plant_pest_info/emerald_ash_b/regulatory.shtml. Wood waste can be disposed of as you normally would if your county is not part of a quarantine.

Canopy Replacement

As budget permits, all removed ash trees will be replaced. All trees should meet the restrictions in the Sample city ordinance (Appendix C). The new plantings will be a diverse mix and will not include ash, maple, cottonwood, poplar, box elder, Chinese elm, evergreen, willow or black walnut.

Postponed Work

While finances, staffing and equipment are focused on the management of ash, usual services may be delayed. Tree removal requests on genus other than ash will be prioritized by hazardous or emergency situations only.

Monitoring

It is recommended that ash trees be checked with a visual survey every year for tree death and for the following signs and symptoms: canopy dieback, epicormic shoots, bark splitting, D-shaped borer exit holes, and wood pecker damage.

Private Ash Trees

It is strongly recommended that private property owners start removing ash trees on their property upon arrival of EAB. In the Sample Tree Ordinances recommended for adoption (Appendix C), City Code 151.06 states “If it is determined with reasonable certainty that any such condition exists (trees or shrubs in the City reported or suspected to be infected with or damaged by any disease or insect or disease pests) on private property and that the danger to other trees or to adjoining property or passing motorists or pedestrians is imminent, the Council shall notify by certified mail the owner, occupant or person in charge of such property to correct such condition by treatment or removal within fourteen (14) days of said notification. If such owner, occupant or person in charge of said property fails to comply within 14 days of receipt of notice, the Council may cause the condition to be corrected and the cost assessed against the property.”

Budget

Proposed Budget

Total \$21,600 over 6 years (\$3,600/year)

FY 2011 Budget

Removal: \$2,000

Planting: \$600

Watering & Maintenance: \$500

FY 2012 Budget

Removal: \$2,000

Planting: \$600

Routine trimming: \$1,000

Watering & Maintenance: \$500

FY 2013 Budget

Removal: \$2,000

Planting: \$600

Watering & Maintenance: \$500

FY 2014 Budget

Removal: \$2,000

Planting: \$600

Routine trimming: \$1,000

Watering & Maintenance: \$500

FY 2015 Budget

Removal: \$2,000

Planting: \$600

Watering & Maintenance: \$500

FY 2016 Budget

Removal: \$2,000

Planting: \$600

Routine trimming: \$1,000

Watering & Maintenance: \$500

All ash and immediate concern trees should be removed within 4 to 5 years with proposed budget

Purposed Budget Increase

EAB could potentially kill all ash trees in Farmington within 4 years of its arrival. To remove all ash trees within 4 to 5 years the proposed budget should be adopted. Additionally, it is recommended that Farmington apply for grants to fund replacement trees. Utility Company grants are usually between \$500 and \$10,000 for community-based, tree-planting projects that include parks, gateways, cemeteries, nature trails, libraries, nursing homes, and schools.

Works Cited

Census Bureau. 2010. <http://censtats.census.gov/data/IA/1601964290.pdf> (April, 2013)

USDA Forest Service, et al. 2006. i-Tree Software Suite v1.0 User's Manual. Pp. 27-40.

McPherson EG, Simpson JR, Peper PJ, Gardner SL, Vargas KE, Ho J, Maco S, Xiao Q. 2005b. City of Charleston, South Carolina, municipal forest resource analysis. Internal Tech Rep. Davis, CA: U.S. Department of Agriculture, Center for Urban Forest Research. p. 57

Nowak, D.J. and J.F. Dwyer. 2007. Understanding the benefits and costs of urban forest ecosystems. In: Kuser, J. (ed.) Urban and Community Forestry in the Northeast. New York: Springer. Pp. 25-46.

Peper, Paula J.; McPherson, E. Gregory; Simpson, James R.; Vargas, Kelaine E.; Xiao, Qingfu 2009. Lower Midwest community tree guide: benefits, costs, and strategic planting. Gen. Tech. Rep. PSW-GTR-219. Albany, CA: U.S. Department of Agriculture, Forest Service, Pacific Southwest Research Station. p.115

Appendix A: i-Tree Data

Table 1: Annual Energy Benefits

Farmington

Annual Energy Benefits of Public Trees by Species

2/17/2014

| Species | Total Electricity (MWh) | Electricity (\$) | Total Natural Gas (Therms) | Natural Gas (\$) | Total (\$) | Standard Error | % of Total Trees | % of Total \$ | Avg. \$/tree |
|--------------------|----------------------------|---------------------|-------------------------------|---------------------|---------------|-------------------|---------------------|------------------|-----------------|
| Silver maple | 17.8 | 1,350 | 2,352.9 | 2,306 | 3,656 | (N/A) | 24.9 | 31.6 | 64.14 |
| Sugar maple | 13.1 | 991 | 1,775.2 | 1,740 | 2,730 | (N/A) | 20.5 | 23.6 | 58.09 |
| Siberian elm | 6.2 | 472 | 833.6 | 817 | 1,289 | (N/A) | 8.7 | 11.1 | 64.46 |
| Maple | 3.3 | 251 | 410.1 | 402 | 653 | (N/A) | 7.9 | 5.6 | 36.26 |
| Norway maple | 2.8 | 213 | 401.0 | 393 | 606 | (N/A) | 7.0 | 5.2 | 37.86 |
| Catalpa | 2.7 | 209 | 372.9 | 365 | 574 | (N/A) | 4.8 | 5.0 | 52.19 |
| Apple | 0.5 | 34 | 77.9 | 76 | 111 | (N/A) | 4.8 | 1.0 | 10.05 |
| Green ash | 2.2 | 167 | 272.8 | 267 | 434 | (N/A) | 3.9 | 3.8 | 48.26 |
| Ohio buckeye | 0.3 | 26 | 50.6 | 50 | 75 | (N/A) | 2.2 | 0.7 | 15.05 |
| Black walnut | 1.2 | 91 | 146.1 | 143 | 234 | (N/A) | 2.2 | 2.0 | 46.85 |
| American sycamore | 1.9 | 145 | 250.3 | 245 | 390 | (N/A) | 2.2 | 3.4 | 77.97 |
| Eastern redbud | 0.3 | 21 | 41.3 | 40 | 62 | (N/A) | 1.3 | 0.5 | 20.58 |
| Northern hackberry | 0.7 | 51 | 98.9 | 97 | 148 | (N/A) | 1.3 | 1.3 | 49.21 |
| Northern pin oak | 0.9 | 69 | 134.4 | 132 | 200 | (N/A) | 1.3 | 1.7 | 66.79 |
| Other street trees | 2.0 | 152 | 279.7 | 274 | 426 | (N/A) | 7.0 | 3.7 | 26.64 |
| Citywide total | 55.9 | 4,240 | 7,497.6 | 7,348 | 11,588 | (N/A) | 100.0 | 100.0 | 50.60 |

Table 2: Annual Stormwater Benefits

Farmington

Annual Stormwater Benefits of Public Trees by Species

2/17/2014

| Species | Total rainfall interception (Gal) | Total (\$) | Standard Error | % of Total Trees | % of Total \$ | Avg. \$/tree |
|--------------------|--------------------------------------|---------------|-------------------|---------------------|------------------|-----------------|
| Silver maple | 269,562 | 7,306 | (N/A) | 24.9 | 41.8 | 128.17 |
| Sugar maple | 141,746 | 3,842 | (N/A) | 20.5 | 22.0 | 81.74 |
| Siberian elm | 63,926 | 1,733 | (N/A) | 8.7 | 9.9 | 86.63 |
| Maple | 20,064 | 544 | (N/A) | 7.9 | 3.1 | 30.21 |
| Norway maple | 19,170 | 520 | (N/A) | 7.0 | 3.0 | 32.47 |
| Catalpa | 37,525 | 1,017 | (N/A) | 4.8 | 5.8 | 92.45 |
| Apple | 1,538 | 42 | (N/A) | 4.8 | 0.2 | 3.79 |
| Green ash | 19,229 | 521 | (N/A) | 3.9 | 3.0 | 57.91 |
| Ohio buckeye | 3,813 | 103 | (N/A) | 2.2 | 0.6 | 20.67 |
| Black walnut | 8,452 | 229 | (N/A) | 2.2 | 1.3 | 45.81 |
| American sycamore | 25,771 | 698 | (N/A) | 2.2 | 4.0 | 139.69 |
| Eastern redbud | 1,000 | 27 | (N/A) | 1.3 | 0.2 | 9.03 |
| Northern hackberry | 6,218 | 169 | (N/A) | 1.3 | 1.0 | 56.18 |
| Northern pin oak | 10,007 | 271 | (N/A) | 1.3 | 1.6 | 90.41 |
| Other street trees | 17,337 | 470 | (N/A) | 7.0 | 2.7 | 29.37 |
| Citywide total | 645,358 | 17,490 | (N/A) | 100.0 | 100.0 | 76.38 |

Table 3: Annual Air Quality Benefits**Farmington****Annual Air Quality Benefits of Public Trees by Species**

2/17/2014

| Species | Deposition (lb) | | | | Total Depos. (\$) | Avoided (lb) | | | | Total Avoided (\$) | BVOC Emissions (lb) | BVOC Emissions (\$) | Total (lb) | Total (\$) | Standard Error | % of Total Trees | Avg. \$/tree |
|--------------------|-----------------|-----------------|------------------|-----------------|-------------------------|-----------------|------------------|------|-----------------|--------------------------|---------------------------|---------------------------|---------------|---------------|-------------------|---------------------|-----------------|
| | O ₃ | NO ₂ | PM ₁₀ | SO ₂ | | NO ₂ | PM ₁₀ | VOC | SO ₂ | | | | | | | | |
| Silver maple | 49.3 | 8.4 | 24.0 | 2.2 | 265 | 84.0 | 12.3 | 11.7 | 80.5 | 525 | -26.2 | -98 | 246.0 | 692 | (N/A) | 24.9 | 12.14 |
| Sugar maple | 18.8 | 3.2 | 9.4 | 0.8 | 102 | 62.1 | 9.1 | 8.6 | 59.1 | 387 | -14.8 | -55 | 156.4 | 434 | (N/A) | 20.5 | 9.23 |
| Siberian elm | 10.4 | 1.8 | 5.1 | 0.5 | 56 | 29.5 | 4.3 | 4.1 | 28.2 | 184 | 0.0 | 0 | 83.9 | 241 | (N/A) | 8.7 | 12.03 |
| Maple | 3.7 | 0.6 | 1.8 | 0.2 | 20 | 15.4 | 2.3 | 2.2 | 15.0 | 97 | -1.4 | -5 | 39.7 | 112 | (N/A) | 7.9 | 6.20 |
| Norway maple | 3.0 | 0.5 | 1.6 | 0.1 | 17 | 13.6 | 2.0 | 1.9 | 12.7 | 84 | -0.8 | -3 | 34.6 | 98 | (N/A) | 7.0 | 6.11 |
| Catalpa | 5.4 | 0.9 | 2.5 | 0.2 | 28 | 13.1 | 1.9 | 1.8 | 12.5 | 82 | 0.0 | 0 | 38.2 | 110 | (N/A) | 4.8 | 10.00 |
| Apple | 0.2 | 0.0 | 0.1 | 0.0 | 1 | 2.3 | 0.3 | 0.3 | 2.0 | 14 | 0.0 | 0 | 5.4 | 15 | (N/A) | 4.8 | 1.38 |
| Green ash | 2.1 | 0.3 | 1.1 | 0.1 | 11 | 10.3 | 1.5 | 1.4 | 10.0 | 65 | 0.0 | 0 | 26.8 | 76 | (N/A) | 3.9 | 8.43 |
| Ohio buckeye | 0.9 | 0.1 | 0.4 | 0.0 | 5 | 1.7 | 0.2 | 0.2 | 1.5 | 10 | -0.2 | -1 | 4.9 | 14 | (N/A) | 2.2 | 2.83 |
| Black walnut | 0.7 | 0.1 | 0.4 | 0.0 | 4 | 5.6 | 0.8 | 0.8 | 5.4 | 35 | 0.0 | 0 | 13.9 | 39 | (N/A) | 2.2 | 7.80 |
| American sycamore | 4.7 | 0.8 | 2.1 | 0.2 | 25 | 9.0 | 1.3 | 1.3 | 8.6 | 56 | 0.0 | 0 | 28.0 | 81 | (N/A) | 2.2 | 16.18 |
| Eastern redbud | 0.3 | 0.0 | 0.1 | 0.0 | 1 | 1.4 | 0.2 | 0.2 | 1.3 | 8 | 0.0 | 0 | 3.5 | 10 | (N/A) | 1.3 | 3.27 |
| Northern hackberry | 0.9 | 0.2 | 0.5 | 0.0 | 5 | 3.3 | 0.5 | 0.4 | 3.0 | 20 | 0.0 | 0 | 8.8 | 25 | (N/A) | 1.3 | 8.41 |
| Northern pin oak | 2.2 | 0.4 | 1.1 | 0.1 | 12 | 4.4 | 0.6 | 0.6 | 4.1 | 27 | -0.5 | -2 | 13.0 | 37 | (N/A) | 1.3 | 12.44 |
| Other street trees | 2.1 | 0.4 | 1.3 | 0.1 | 12 | 9.6 | 1.4 | 1.3 | 9.1 | 60 | -2.9 | -11 | 22.5 | 61 | (N/A) | 7.0 | 3.83 |
| Citywide total | 104.7 | 17.7 | 51.5 | 4.7 | 565 | 265.1 | 38.7 | 36.9 | 253.0 | 1,655 | -46.8 | -175 | 725.6 | 2,045 | (N/A) | 100.0 | 8.93 |

Table 4: Annual Carbon Stored**Farmington****Stored CO2 Benefits of Public Trees by Species**

2/17/2014

| Species | Total Stored CO2 (lbs) | Total (\$) | Standard Error | % of Total Trees | % of Total \$ | Avg. \$/tree |
|--------------------|---------------------------|---------------|-------------------|---------------------|------------------|-----------------|
| Silver maple | 1,195,847 | 8,969 | (N/A) | 24.9 | 45.4 | 157.35 |
| Sugar maple | 539,409 | 4,046 | (N/A) | 20.5 | 20.5 | 86.08 |
| Siberian elm | 253,849 | 1,904 | (N/A) | 8.7 | 9.6 | 95.19 |
| Maple | 43,283 | 325 | (N/A) | 7.9 | 1.6 | 18.03 |
| Norway maple | 50,762 | 381 | (N/A) | 7.0 | 1.9 | 23.79 |
| Catalpa | 180,354 | 1,353 | (N/A) | 4.8 | 6.8 | 122.97 |
| Apple | 4,876 | 37 | (N/A) | 4.8 | 0.2 | 3.32 |
| Green ash | 70,782 | 531 | (N/A) | 3.9 | 2.7 | 58.98 |
| Ohio buckeye | 14,348 | 108 | (N/A) | 2.2 | 0.5 | 21.52 |
| Black walnut | 23,145 | 174 | (N/A) | 2.2 | 0.9 | 34.72 |
| American | 163,352 | 1,225 | (N/A) | 2.2 | 6.2 | 245.03 |
| Eastern redbud | 4,123 | 31 | (N/A) | 1.3 | 0.2 | 10.31 |
| Northern | 14,359 | 108 | (N/A) | 1.3 | 0.5 | 35.90 |
| Northern pin oak | 36,506 | 274 | (N/A) | 1.3 | 1.4 | 91.26 |
| Other street trees | 18,990 | 314 | (N/A) | 7.0 | 1.6 | 19.62 |
| Citywide total | 2,636,859 | 19,776 | (N/A) | 100.0 | 100.0 | 86.36 |

Table 5: Annual Carbon Sequestered**Farmington****Annual CO₂ Benefits of Public Trees by Species**

2/17/2014

| Species | Sequestered (lb) | Sequestered (\$) | Decomposition Release (lb) | Maintenance Release (lb) | Total Released (\$) | Avoided (lb) | Avoided (\$) | Net Total (lb) | Total Standard (\$) | % of Total Trees | % of Total \$ | Avg. \$/tree |
|--------------------|------------------|------------------|----------------------------|--------------------------|---------------------|--------------|--------------|----------------|---------------------|------------------|---------------|--------------|
| Silver maple | 81,731 | 613 | -5,740 | -11 | -43 | 29,835 | 224 | 105,815 | 794 (N/A) | 24.9 | 44.6 | 13.92 |
| Sugar maple | 28,930 | 217 | -2,589 | -9 | -19 | 21,891 | 164 | 48,223 | 362 (N/A) | 20.5 | 20.3 | 7.70 |
| Siberian elm | 11,682 | 88 | -1,218 | -4 | -9 | 10,437 | 78 | 20,896 | 157 (N/A) | 8.7 | 8.8 | 7.84 |
| Maple | 5,901 | 44 | -208 | -4 | -2 | 5,543 | 42 | 11,232 | 84 (N/A) | 7.9 | 4.7 | 4.68 |
| Norway maple | 5,131 | 38 | -244 | -3 | -2 | 4,702 | 35 | 9,586 | 72 (N/A) | 7.0 | 4.0 | 4.49 |
| Catalpa | 6,215 | 47 | -866 | -2 | -7 | 4,611 | 35 | 9,958 | 75 (N/A) | 4.8 | 4.2 | 6.79 |
| Apple | 721 | 5 | -23 | -2 | 0 | 757 | 6 | 1,452 | 11 (N/A) | 4.8 | 0.6 | 0.99 |
| Green ash | 4,453 | 33 | -340 | -2 | -3 | 3,692 | 28 | 7,803 | 59 (N/A) | 3.9 | 3.3 | 6.50 |
| Ohio buckeye | 22 | 0 | -69 | -1 | -1 | 567 | 4 | 519 | 4 (N/A) | 2.2 | 0.2 | 0.78 |
| Black walnut | 2,441 | 18 | -111 | -1 | -1 | 2,013 | 15 | 4,342 | 33 (N/A) | 2.2 | 1.8 | 6.51 |
| American sycamore | 2,975 | 22 | -784 | -1 | -6 | 3,194 | 24 | 5,384 | 40 (N/A) | 2.2 | 2.3 | 8.08 |
| Eastern redbud | 419 | 3 | -20 | -1 | 0 | 470 | 4 | 869 | 7 (N/A) | 1.3 | 0.4 | 2.17 |
| Northern hackberry | 773 | 6 | -69 | -1 | -1 | 1,120 | 8 | 1,824 | 14 (N/A) | 1.3 | 0.8 | 4.56 |
| Northern pin oak | 840 | 6 | -175 | -1 | -1 | 1,517 | 11 | 2,181 | 16 (N/A) | 1.3 | 0.9 | 5.45 |
| Other street trees | 4,136 | 31 | -201 | -3 | -2 | 3,363 | 25 | 7,295 | 55 (N/A) | 7.0 | 3.1 | 3.42 |
| Citywide total | 156,370 | 1,173 | -12,657 | -45 | -95 | 93,711 | 703 | 237,380 | 1,780 (N/A) | 100.0 | 100.0 | 7.77 |

Table 6: Annual Social and Aesthetic Benefits**Farmington****Annual Aesthetic/Other Benefits of Public Trees by Species**

2/17/2014

| Species | Total (\$) | Standard Error | % of Total Trees | % of Total \$ | Avg. \$/tree |
|--------------------|--------------|----------------|------------------|---------------|--------------|
| Silver maple | 6,127 (N/A) | | 24.9 | 45.4 | 107.49 |
| Sugar maple | 3,039 (N/A) | | 20.5 | 22.5 | 64.65 |
| Siberian elm | 847 (N/A) | | 8.7 | 6.3 | 42.36 |
| Maple | 852 (N/A) | | 7.9 | 6.3 | 47.36 |
| Norway maple | 535 (N/A) | | 7.0 | 4.0 | 33.42 |
| Catalpa | 482 (N/A) | | 4.8 | 3.6 | 43.81 |
| Apple | 40 (N/A) | | 4.8 | 0.3 | 3.64 |
| Green ash | 420 (N/A) | | 3.9 | 3.1 | 46.64 |
| Ohio buckeye | 11 (N/A) | | 2.2 | 0.1 | 2.19 |
| Black walnut | 241 (N/A) | | 2.2 | 1.8 | 48.22 |
| American sycamore | 219 (N/A) | | 2.2 | 1.6 | 43.80 |
| Eastern redbud | 24 (N/A) | | 1.3 | 0.2 | 7.98 |
| Northern hackberry | 121 (N/A) | | 1.3 | 0.9 | 40.39 |
| Northern pin oak | 75 (N/A) | | 1.3 | 0.6 | 24.84 |
| Other street trees | 459 (N/A) | | 7.0 | 3.4 | 28.70 |
| Citywide total | 13,491 (N/A) | | 100.0 | 100.0 | 58.91 |

Table 7: Summary of Benefits in Dollars
Average Annual Benefits of Public Trees by
Species

| Species | Energy | CO2 | Air Quality | Stormwater | Aesthetic/Other | Total (\$) | Standard Error | % of Total \$ |
|-----------------------|--------|-------|----------------|------------|-----------------|-------------|-------------------|---------------------|
| Silver maple | 3,656 | 794 | 692 | 7,306 | 6,127 | \$18,573.83 | (±0) | 40.03 |
| Sugar maple | 2,730 | 362 | 434 | 3,842 | 3,039 | \$10,406.01 | (±0) | 22.43 |
| Siberian elm | 1,289 | 157 | 241 | 1,733 | 847 | \$4,266.09 | (±0) | 9.20 |
| Maple | 653 | 84 | 112 | 544 | 852 | \$2,244.74 | (±0) | 4.84 |
| Norway maple | 606 | 72 | 98 | 520 | 535 | \$1,829.69 | (±0) | 3.94 |
| Catalpa | 574 | 75 | 110 | 1,017 | 482 | \$2,257.70 | (±0) | 4.87 |
| Apple | 111 | 11 | 15 | 42 | 40 | \$218.35 | (±0) | 0.47 |
| Green ash | 434 | 59 | 76 | 521 | 420 | \$1,509.64 | (±0) | 3.25 |
| Ohio buckeye | 75 | 4 | 14 | 103 | 11 | \$207.55 | (±0) | 0.45 |
| Black walnut | 234 | 33 | 39 | 229 | 241 | \$776.00 | (±0) | 1.67 |
| American sycamore | 390 | 40 | 81 | 698 | 219 | \$1,428.58 | (±0) | 3.08 |
| Eastern redbud | 62 | 7 | 10 | 27 | 24 | \$129.09 | (±0) | 0.28 |
| Northern hackberry | 148 | 14 | 25 | 169 | 121 | \$476.23 | (±0) | 1.03 |
| Northern pin oak | 200 | 16 | 37 | 271 | 75 | \$599.77 | (±0) | 1.29 |
| Other street trees | 426 | 55 | 61 | 470 | 459 | \$1,471.36 | (±0) | 3.17 |
| Citywide total | 11,588 | 1,780 | 2,045 | 17,490 | 13,491 | \$46,394.63 | (±0) | 100.00 |

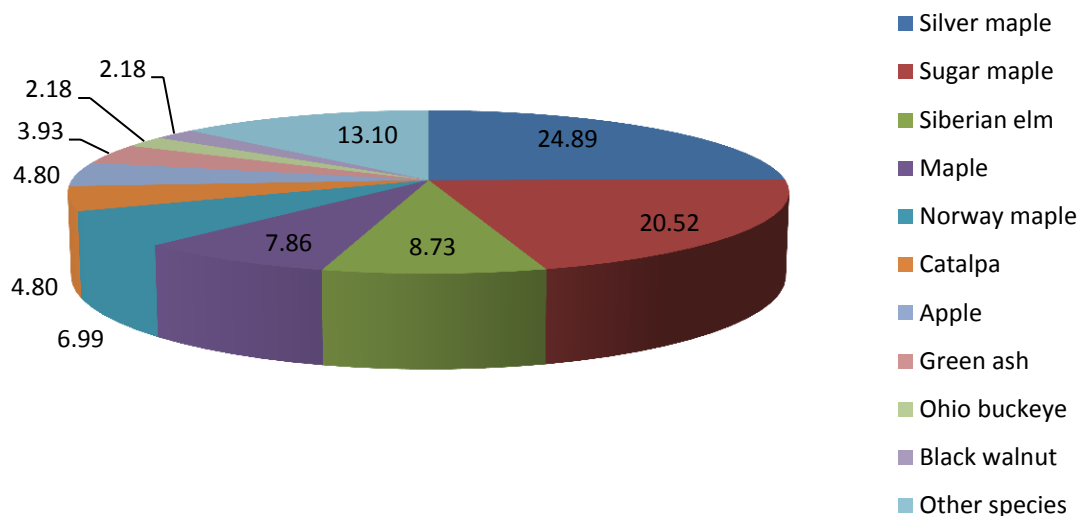


Figure 1: Species Distribution

Relative Age Distribution of Top 10 Public Tree Species (%)

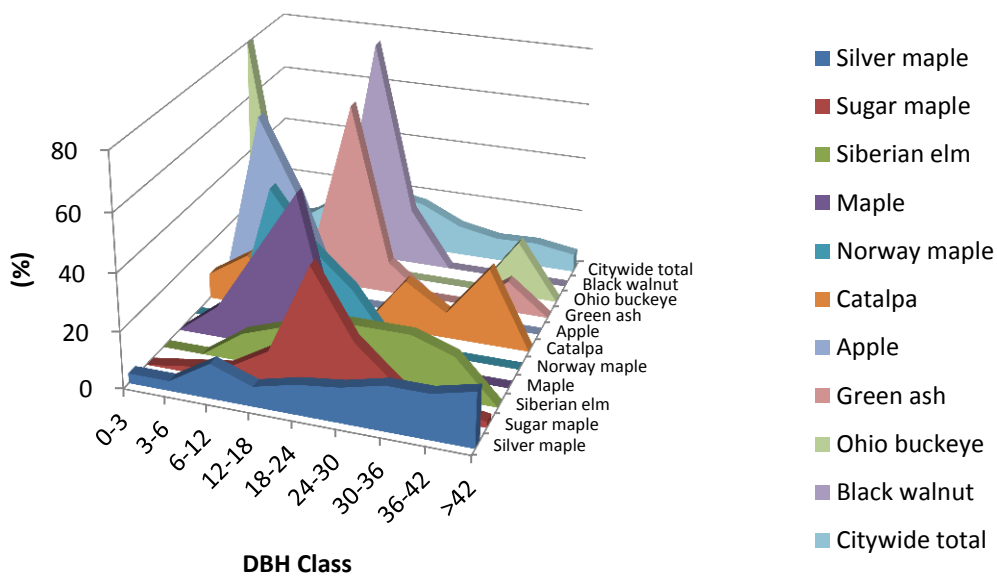


Figure 2: Relative Age Class

Leaf Condition

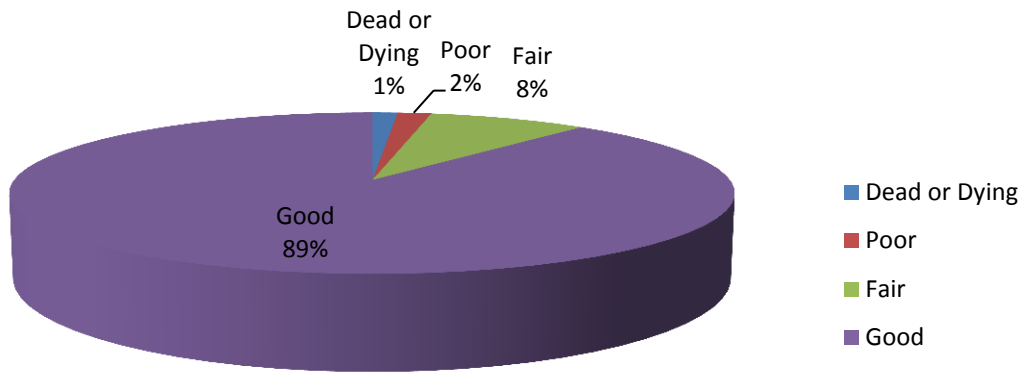


Figure 3: Foliage Condition

Wood Condition

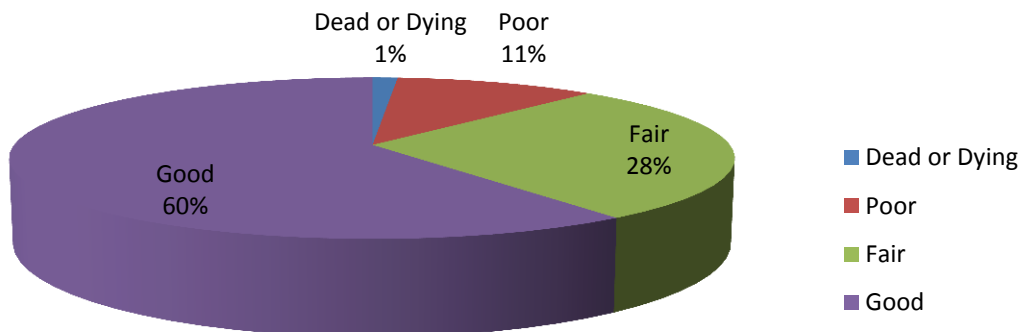


Figure 4: Wood Condition

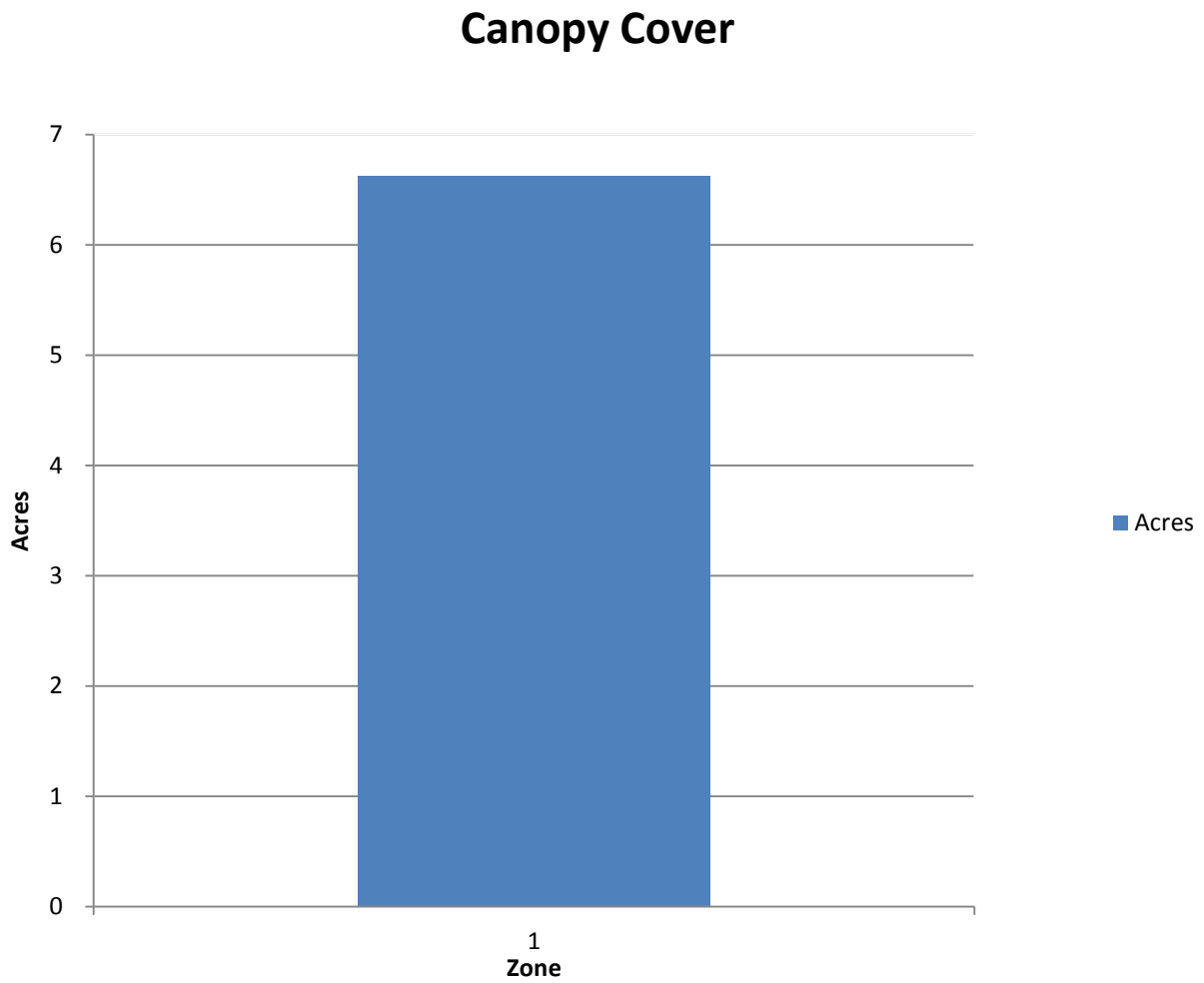


Figure 5: Canopy Cover in Acres

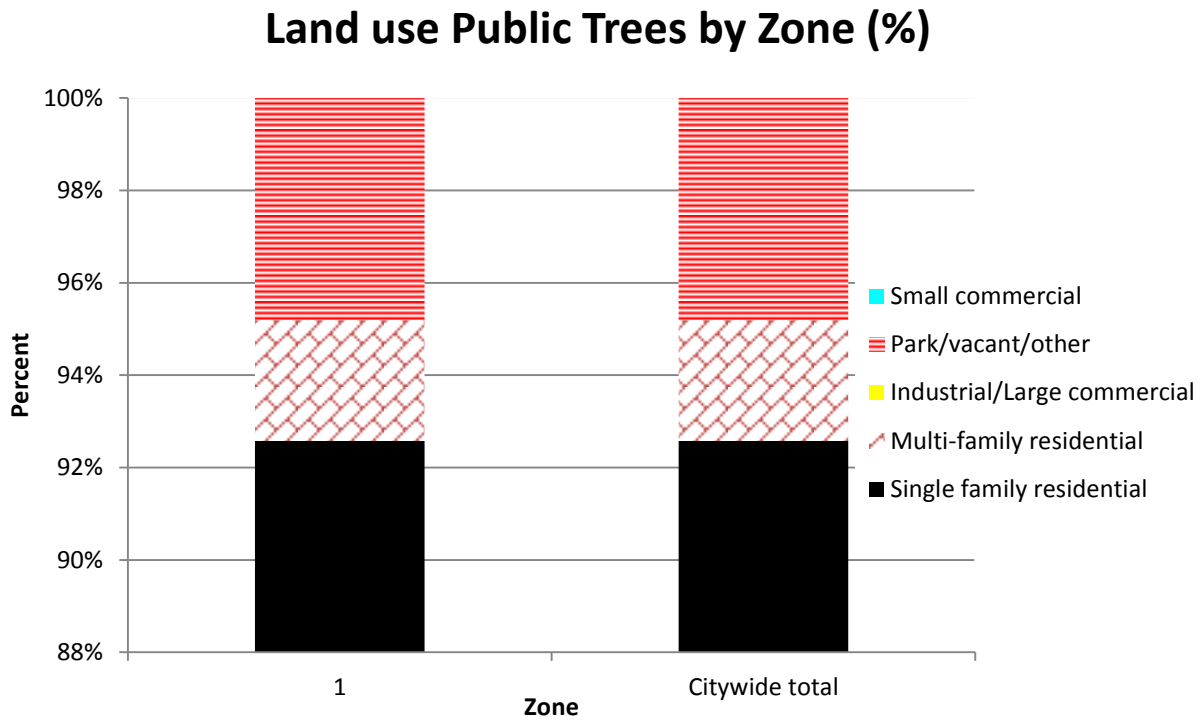


Figure 6: Land Use of city/park trees

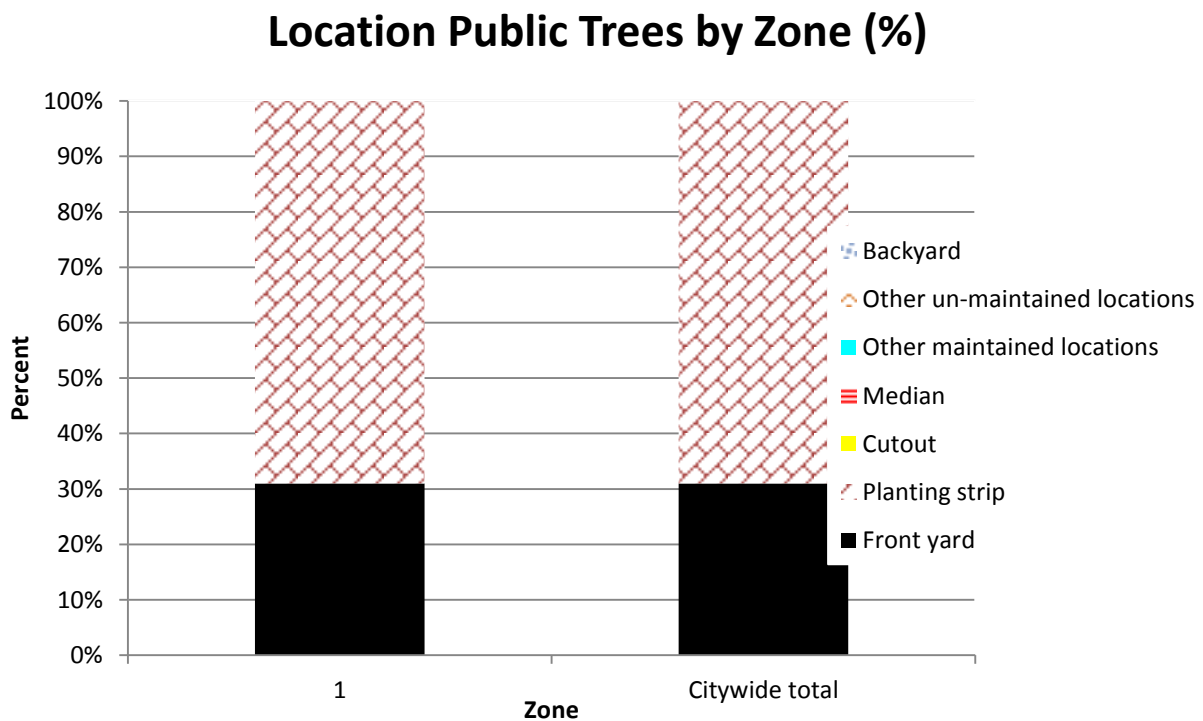


Figure 7: Location of city/park trees

Appendix B: ArcGIS Mapping



Figure 1: Location of Ash Trees



Figure 2: Location of EAB symptoms



Figure 3: Location of Poor Condition Trees



Figure 4: Location of Trees with Recommended Maintenance



Figure 5: Maintenance Tasks *City ownership of the trees recommended for removal should be verified prior to any removal*

Appendix C: Sample Tree Ordinances

CHAPTER 151 TREES AND GRASS

151.01 Definition 151.05 Disease Control
151.02 Planting Restrictions 151.06 Inspection and Removal
151.03 Duty to Trim Trees 151.07 Cutting or Mowing of Grass
151.04 Trimming Trees to be Supervised

151.01 DEFINITION. For use in this chapter, “boulevard” means that part of the street, avenue or highway in the City not covered by sidewalk and lying between the lot line and the curb line; or, on unpaved streets, that part of the street, avenue or highway lying between the lot line and that portion of the street usually traveled by vehicular traffic.

151.02 PLANTING RESTRICTIONS. No tree shall be planted in any boulevard or street except in accordance with the following:

1. Alignment. All trees planted in any street shall be planted in the boulevard midway between the outer line of the sidewalk and the curb. In the event a curb line is not established, trees shall be planted on a line ten (10) feet from the property line.
2. Spacing. Trees shall not be planted on any boulevard which is less than nine (9) feet in width, or contains less than eighty-one (81) square feet of exposed soil surface per tree. Trees shall not be planted closer than twenty (20) feet from street intersections (property lines extended) and ten (10) feet from driveways. If it is at all possible trees should be planted inside the property lines and not between the sidewalk and the curb.
3. Prohibited Trees. No person shall plant in any street any fruit-bearing tree or any tree of the kinds commonly known as cottonwood, poplar, box elder, Chinese elm, evergreen, willow or black walnut.

151.03 DUTY TO TRIM TREES. The owner or agent of the abutting property shall keep the trees on, or overhanging the street, trimmed so that all branches will be at least eighteen (18) feet above the surface of a street, twenty (20) feet above the surface of a primary highway, and eight (8) feet above the sidewalks. If the abutting property owner fails to trim the trees, the City may serve notice on the abutting property owner requiring that such action be taken within five (5) days. If such action is not taken within that time, the City may perform the required action and assess the costs against the abutting property for collection in the same manner as a property tax.
(Code of Iowa, Sec. 364.12[2c, d, & e])

151.04 TRIMMING TREES TO BE SUPERVISED. Except as allowed in Section 151.03, it is unlawful for any person to trim or cut any tree in a street or public place unless the work is done under the supervision of the City.

151.05 DISEASE CONTROL. Any dead, diseased or damaged tree or shrub which may harbor serious insect or disease pests or disease injurious to other trees is hereby declared to be a nuisance.

151.06 INSPECTION AND REMOVAL. The Council shall inspect or cause to be inspected any trees or shrubs in the City reported or suspected to be infected with or damaged by any disease or insect or disease pests, and such trees and shrubs shall be subject to removal as follows:

1. City Property. If it is determined that any such condition exists on any public property, including the strip between the curb and the lot line of private property, the Council may cause such condition to be corrected by treatment or removal. The Council may also order the removal of any trees on the streets of the City which interfere with the making of improvements or with travel thereon.

2. Private Property. If it is determined with reasonable certainty that any such condition exists on private property and that the danger to other trees or to adjoining property or passing motorists or pedestrians is imminent, the Council shall notify by certified mail the owner, occupant or person in charge of such property to correct such condition by treatment or removal within fourteen (14) days of said notification. If such owner, occupant or person in charge of said property fails to comply within 14 days of receipt of notice, the Council may cause the condition to be corrected and the cost assessed against the property.

(Code of Iowa, Sec. 364.12[3b & h])

151.07 CUTTING OR MOWING OF GRASS.

1. Duty to Cut and Mow Lawns and Lots. The owner of any property shall cut and mow all lawns and lots so that such growth shall be less than four (4) inches at all times.

2. Cutting and Mowing by City. If a property owner refuses or fails to cut and mow lawns and lots within forty-eight (48) hours after being delivered a notice from the City to perform such action, the Council may require said work to be done and the cost and expenses thereof shall be assessed to the property owner after due notice is given. The amount of such assessment shall be certified to the County Auditor as provided by law and the same shall be collected with and in the same manner as general property taxes.

Sample Planting List

| Common Name | Scientific Name | Cultivars/ Selections |
|--------------------------|------------------------------|---|
| Shade Trees | | |
| Black Maple | <i>Acer nigrum</i> | |
| Red Maple | <i>Acer rubrum</i> | Burgundy Belle, Red Sunset, Scarlet Jewel, Redpoint, Somerset |
| Sugar Maple | <i>Acer saccharum</i> | Commemoration, Crescendo, Endowment, Fall Fiesta, Legacy, Green Mountain |
| Hackberry | <i>Celtis occidentalis</i> | Chicagoland, Prairie Pride, Windy City |
| Yellowwood | <i>Cladrastis kentuckea</i> | |
| Ginkgo (male only) | <i>Ginkgo biloba</i> | Autumn Gold, Golden Colonnade, Halka, Magyar, Presidential Gold, Princeton Sentry |
| Thornless Honeylocust | <i>Gleditsia triacanthos</i> | Northern Acclaim, Skyline, Shademaster |
| Kentucky Coffeetree | <i>Gymnocladus dioicus</i> | |
| Larch | <i>Larix decidua</i> | |
| American Hophornbeam | <i>Ostrya virginiana</i> | |
| London Planetree | <i>Platanus x acerfolia</i> | Bloodgood |
| Corktree (male only) | <i>Phellodendron spp.</i> | Macho, Longenecker, Eye Stopper and His Majesty |
| White Oak | <i>Quercus alba</i> | |
| Swamp White Oak | <i>Quercus bicolor</i> | |
| Shingle Oak | <i>Quercus imbricaria</i> | |
| Bur Oak | <i>Quercus macrocarpa</i> | |
| Chinkapin Oak | <i>Quercus muehlenbergii</i> | |
| English Oak | <i>Quercus robur</i> | |
| Northern Red Oak | <i>Quercus rubra</i> | |
| Bald Cypress | <i>Taxodium distichum</i> | |
| American Linden | <i>Tilia americana</i> | Boulevard, Front Yard, Legend |
| Silver Linden | <i>Tillia tomentosa</i> | |
| Low Growing Trees | | |
| Serviceberry | <i>Amelanchier spp.</i> | Autumn Brilliance, Cole's Select, Cumulus, Princess Diana, Strata |
| American Hornbeam | <i>Carpinus caroliniana</i> | |
| Eastern Redbud | <i>Cercis canadensis</i> | |
| Pagoda Dogwood | <i>Cornus alternifolia</i> | |
| Flowering Crabapple | <i>Malus spp.</i> | Adirondack, Cardinal, David, Donald Wyman, Doublooms, Florbunda, Golden Raindrops, Harvest Gold, Indian Magic, Louisa, Mary Potter, Purple Prince, Red Jewel, Royal Fountain, Royal Raindrops, Sugar Tyme |
| Japanese Tree Lilac | <i>Syringa reticulata</i> | Ivory Silk, Summer Snow |

| *Parks only* Conifers | | |
|------------------------------|----------------------------------|--|
| White Fir | <i>Abies concolor</i> | |
| Norway Spruce | <i>Picea abies</i> | |
| White Spruce | <i>Picea glauca</i> | |
| Black Hills Spruce | <i>Picea glauca var. densata</i> | |
| Serbian Spruce | <i>Picea omorika</i> | |
| White Pine | <i>Pinus strobus</i> | |
| Arborvitae | <i>Thuja occidentalis</i> | |
| Eastern Hemlock | <i>Tsuga canadensis</i> | |

The State of Iowa is an Equal Opportunity Employer and provider of ADA services.

Federal law prohibits employment discrimination on the basis of race, color, age, religion, national origin, sex or disability. State law prohibits employment discrimination on the basis of race, color, creed, age, sex, sexual orientation, gender identity, national origin, religion, pregnancy, or disability. State law also prohibits public accommodation (such as access to services or physical facilities) discrimination on the basis of race, color, creed, religion, sex, sexual orientation, gender identity, religion, national origin, or disability. If you believe you have been discriminated against in any program, activity or facility as described above, or if you desire further information, please contact the Iowa Civil Rights Commission, 1-800-457-4416, or write to the Iowa Department of Natural Resources, Wallace State Office Bldg., 502 E. 9th St., Des Moines, IA 50319.

If you need accommodations because of disability to access the services of this Agency, please contact Director Richard Leopold at 515-281-5918.