

**ROLSCREEN
(Pella, Iowa)**

GENERAL DESCRIPTION

The Rolscreen site is located in the NW 1/4 of the SE 1/4 of Section 10, Township 76N, Range 18W in Pella, Iowa Marion County and is owned by the Rolscreen Company. The site was entered on the Registry in January 1990.

SITE CLASSIFICATION

In 2001 the site was reclassified as “d” Site Properly Closed Requires Continued Management.

TYPE AND QUANTITY OF HAZARDOUS WASTE

The quantity of hazardous waste released from this site is undetermined. Initially, three underground tanks were identified on this site as having released a compound known as “Miltreat”. This wood preservative compound consisted of 95% mineral spirits and 5% pentachlorophenol (PCP). A subsequent groundwater investigation identified PCP, benzene, toluene, and xylenes in monitoring wells located on-site.

STATUS OF PUBLIC HEALTH AND ENVIRONMENTAL CONCERNS

- **The primary public health concern has been the potential exposure to contaminated groundwater**

The Rolscreen Company is located within Pella, Iowa. The city obtains its water supply from a set of collection wells located below the Red Rock Dam, which is approximately 3.7 miles southwest of the site. The closest well is located at a farmhouse approximately one-half mile south of the site. Sent Creek is located approximately one mile southwest of the site. The creek flows south into the Des Moines River below Red Rock Dam. The river is approximately 3.7 miles south of the site.

STATUS OF ASSESSMENT, MONITORING OR REMEDIAL ACTIONS

The state is the lead agency for the site.

In September 1988, Rolscreen removed 11 other underground tanks. Soil samples collected from the tank area showed a release had occurred. The original three Miltreat tanks were removed in January 1989. In the process of removing the tanks, an in-situ biological treatment system was installed. The system became fully operational in October 1989 and had five major elements. These included water collection, nutrient feed, water distribution, air distribution, and a secondary bio-reactor.

Remedial actions at the site were conducted in accordance with Administrative Consent Order 88-HC-05. Under the terms of the order, groundwater cleanup was to continue until the PCP level is reduced to 0.22 mg/L. The Order has since been rescinded and despite remedial efforts, groundwater contamination has remained in the immediate vicinity of the site at levels an order of magnitude above the cleanup goal and more than three orders of magnitude above the safe drinking water standard for PCP. The in-situ bio-remediation system in operation since late 1989 had only a marginal effect in reducing PCP contamination levels and was shut down in 1999.

In 2002 the IDNR closed the Consent Order as the site completed all remedial actions identified in the order. Although groundwater monitoring has been terminated, due to the determination of stable or improving conditions, the site remains listed to prevent installation of drinking water wells in the area.

In 2010 the EPA RCRA program issued an administrative order on consent to Rolscreen for additional corrective action at the site. Since then, Rolscreen has taken actions to comply with the order.

2015: The facility is continuing assessment of contamination at the property as stipulated in the 2010 order. A Corrective Action Framework document for conducting the RFI has been developed between the EPA and the facility, and was approved on April 28, 2015. This document details the remaining scope of work for completing the RFI and outlines a more streamlined approach for conducting and completing the investigation. Phase III RFI field work is currently being completed which includes assessment of groundwater at Area III underneath the existing manufacturing building, and further data gathering to support a human health and ecological risk assessment. Quarterly groundwater monitoring is ongoing and will incorporate new wells installed at Area III within future monitoring events.

2016: The facility is continuing assessment of contamination at the property as stipulated in the 2010 order. The facility has completed the Phase III portion of the RFI. Pending revisions to the report, the RFI appears to be complete. The facility is currently conducting indoor air sampling at Area III and IV to determine if vapor intrusion into the overlying building is a concern. The first round of VI sampling was completed in Summer 2016 with which no detections were above screening levels. The second round of VI sampling will be conducting during the Winter of 2016/2017. The facility is also currently conducting a human health and ecological risk assessment which is in the work plan phase at this time. Groundwater monitoring is ongoing and have incorporated new wells installed in Area III.

2017:

The facility is currently conducting Corrective Measures Study activities at the property as stipulated in the 2010 order. The facility completed indoor air sampling at Area III and IV, and the vapor intrusion assessment, which indicated PCE detections in indoor air well below the conservative Industrial Target Indoor Air Concentration of 37.7 µg/m³. The facility completed a SLERA and focused ERA which indicated no adverse effects on ecological receptors. The facility

is also currently conducting a human health assessment with which the final report will be submitted shortly. Groundwater monitoring is ongoing.

2018:

The facility continues to conduct activities related to the Corrective Measures Study. In March the EPA conducted split sampling at MW-28, MW-33, VMW-2, and VMS-3. The Corrective Measures Study Work Plan has been approved and the CMS Report will be submitted soon. As part of this evaluation, the facility will be conducting a metals turbidity and monitored natural attenuation evaluation.

2019:

The EPA has received the arsenic evaluation and it is currently in review. The facility is currently conducting a Monitored Natural Attenuation evaluation. The Corrective Measures Study Report has not been received by the EPA.

2020:

The EPA approved the Protection of Groundwater Soil Screening Level Evaluation Report in April 2020. In June 2020, the EPA approved the Monitored Natural Attenuation Evaluation Report. The EPA has reviewed the Corrective Measures Study Report and is awaiting revisions.

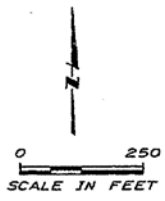
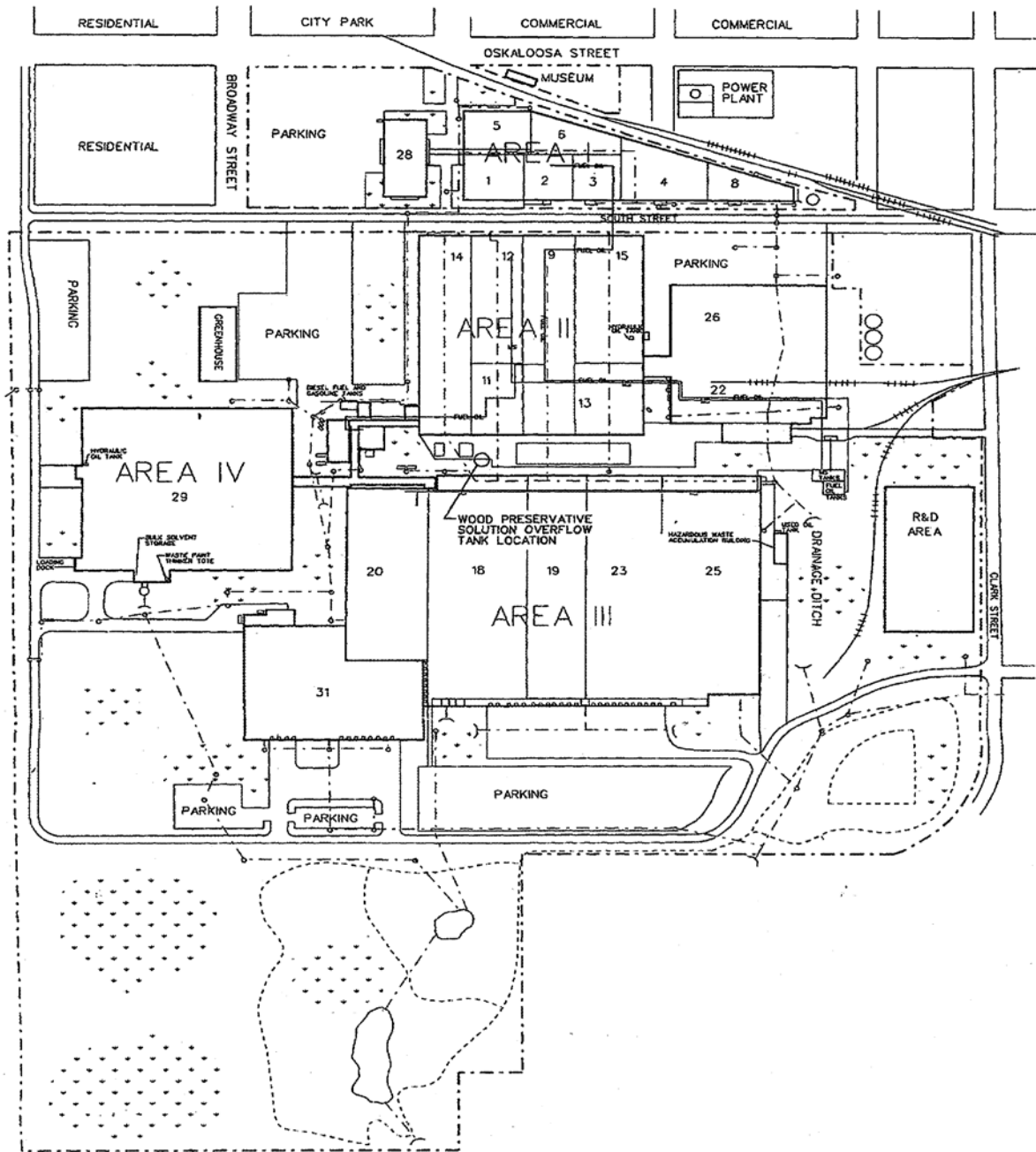
2021:

The Statement of Basis describing the proposed remedy for the site was made available for public comment from April 12 through May 12, 2021. No comments were received. The EPA issued a Final Remedy Decision in May 2021. The EPA also reviewed and approved the 2021 Annual Groundwater Monitoring Report in September 2021. The Corrective Measure Implementation Work Plan has been submitted and is currently under review.

2022: Groundwater monitoring is ongoing. Work continues on development of the Corrective Measure Implementation Work Plan.

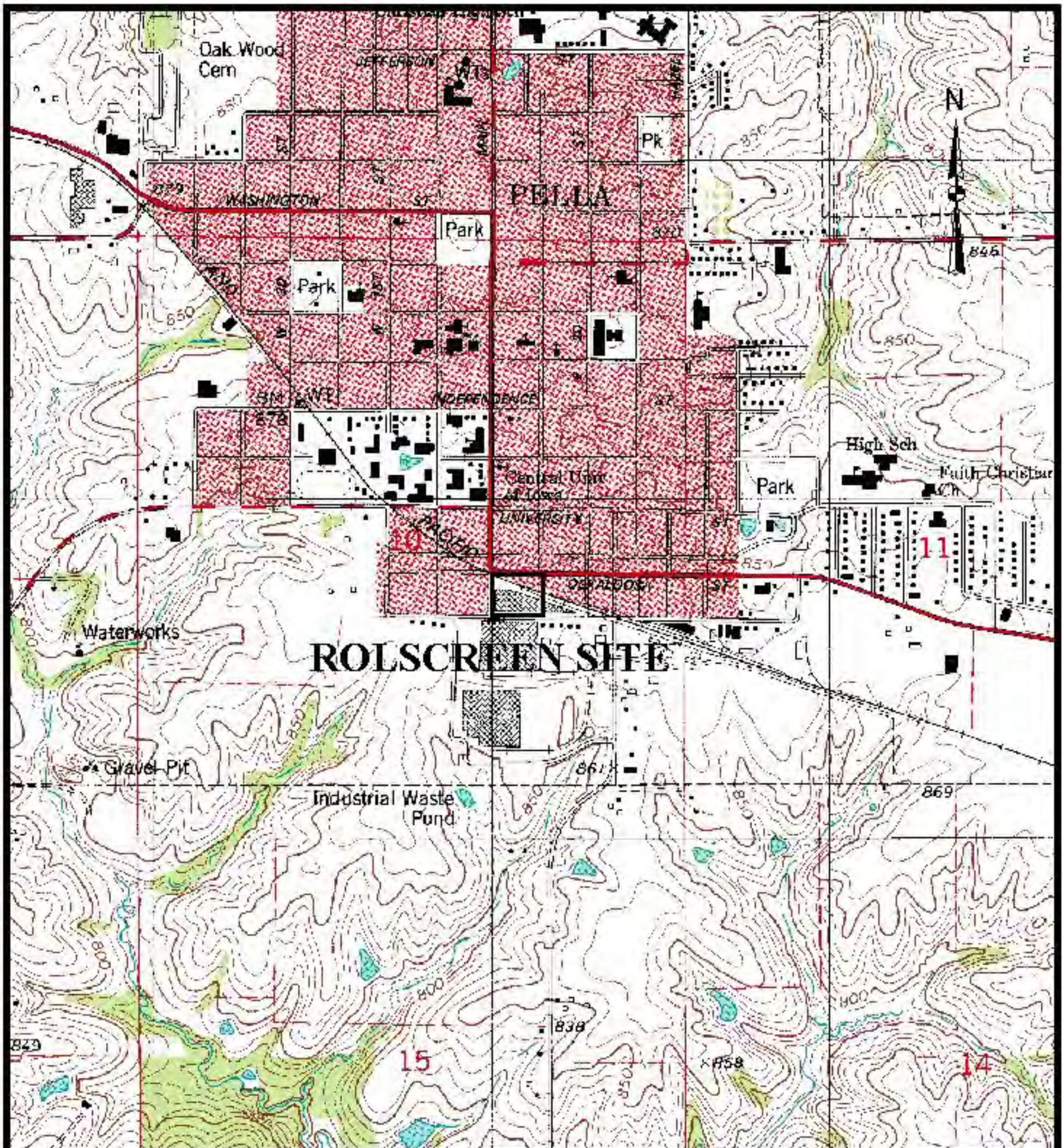
2023: No activity in database

2024: Groundwater monitoring is ongoing under the approved Corrective Measure Implementation Work Plan.



- LEGEND**
- STORM SEWER
 - - - - - PROPERTY LINE
 - ==== PAVEMENT
 - - - - - RECREATION PATH
 - ==== MINERAL SPRINGS
 - ==== FUEL OIL
 - ||||| RAILROAD TRACKS
 - STORM SEWER INLET
 - STORM SEWER OUTLET
 - · · GRASS

(Rolscreen)



ROLSCREEN SITE



Contour Interval 10 Feet

1000 0 1000 2000 3000 4000 Feet