

MITRISIN DISPOSAL SITE
(Clow Corporation)
(Oskaloosa, Iowa)

GENERAL DESCRIPTION

The site is located in SW quarter of the NE quarter of the SW quarter of Section 9, T75N, R15W, Mahaska County, Iowa about two miles east of Oskaloosa, Iowa. The owner of record was Edward Mitrisin. Clow Corporation of Oskaloosa purchased the property from Mr. Mitrisin. The site was entered on the Registry in 1984.

SITE CLASSIFICATION

This site is classified "d" Site Properly Closed, Required Continued Management.

TYPE AND QUANTITY OF HAZARDOUS WASTE

Clow Corporation leased the site for disposal of wastes from their foundry operations. Disposal occurred in an abandoned strip coal mine which had several water-filled depressions. The disposal area is estimated to be less than one acre. Wastes was first placed in the site in 1978 and stopped in January 1982. Wastes included melt baghouse dust, spray booth wastes, foundry sand, wood, and other materials. It is estimated that about 27,800 cubic yards of waste were disposed of at the site.

The arc melt baghouse dust is a characteristic hazardous waste by E.P. toxicity for lead and cadmium. The company estimates about 875 cubic yards of this waste were disposed of at the site. The arc melt baghouse dust is estimated to have included 54 tons of lead and a little less than one ton of cadmium.

The Clow Corporation closed and capped the landfill under a state-approved plan in 1986. The cap was about one foot thick. Six ground water monitoring wells are located around the perimeter of the former landfill.

The EPA conducted RCRA compliance monitoring inspections at the site in 1987, 1989, 1990, 1991 and 1995. In December 1988 the EPA issued a Compliant, Compliance Order, and Notice of Opportunity for Hearing to Clow Corporation and Edward Mitrisin. The order included the assessment of a \$39,000 civil penalty for violations of RCRA with respect to groundwater monitoring requirements at the site.

SUMMARY OF PUBLIC HEALTH AND ENVIRONMENTAL CONCERNS

Surface waters at the site have shown cadmium contamination levels as high as 0.2 mg/L. Groundwater monitoring wells near the site have shown concentrations of 0.7 mg/L of lead and 0.2 mg/L of cadmium. These values are above the Primary Drinking Water Standards for lead

(0.05 mg/L) and cadmium (0.01 mg/L). The extent of this contamination has not been determined.

SUMMARY OF ASSESSMENT, MONITORING OR REMEDIAL ACTIONS

The EPA is the lead agency and will continue to investigate and regulate this site under the RCRA program. The EPA is working with Clow Corporation to correct deficiencies in the site closure and groundwater monitoring actions. The company submitted a revised ground water monitoring plan in March 1990 and was required to develop a cap remediation plan attached to a Consent Order for post-closure activities at the site. The first annual groundwater monitoring report was submitted to the EPA in February 1992. The Maintenance Plan for the site requires quarterly site inspections and immediate repair of any eroded areas.

2007: The EPA is working with Clow Corp. on the completion of a Modified Ground water Monitoring plan

2008: EPA commented on and approved an extension request for the groundwater monitoring plan.

The department will continue to coordinate with the EPA to assure proper continued maintenance.

2009 EPA approved (w/amendments) Clow Valve's proposal to modify monitoring well installation/monitoring plan. Clow Valve will continue quarterly groundwater monitoring of all wells (including new wells MW-3B & MW-4B).

2010

EPA approved post-closure cost estimate 4/7/1020

2011

EPA reviewed and asked for modifications to Clow Valves sampling plan on 1/27/2011

EPA issues Letter of Warning regarding financial assurance on 4/8/2011

EPA approves new up gradient wells on 9/12/2011

2012

EPA (in 4/3/2012 letter) requires continued monitoring

2013

No actions

2014

EPA approval of post closure sampling modification – from quarterly to semi-annually and dropping 2 monitoring wells (2/11/2014)

EPA comments on post-closure Financial Assurance Financial Assessment (6/18/2014)

EPA approval of post-closure QAPP (8/15/2014)

2015

No actions

2016

No actions

2017

IDNR EC letter sent 8/21/2017

2019

No new site activity

2020

2019 annual water quality report was completed in Feb. 2020 and a copy submitted to IDNR

2021

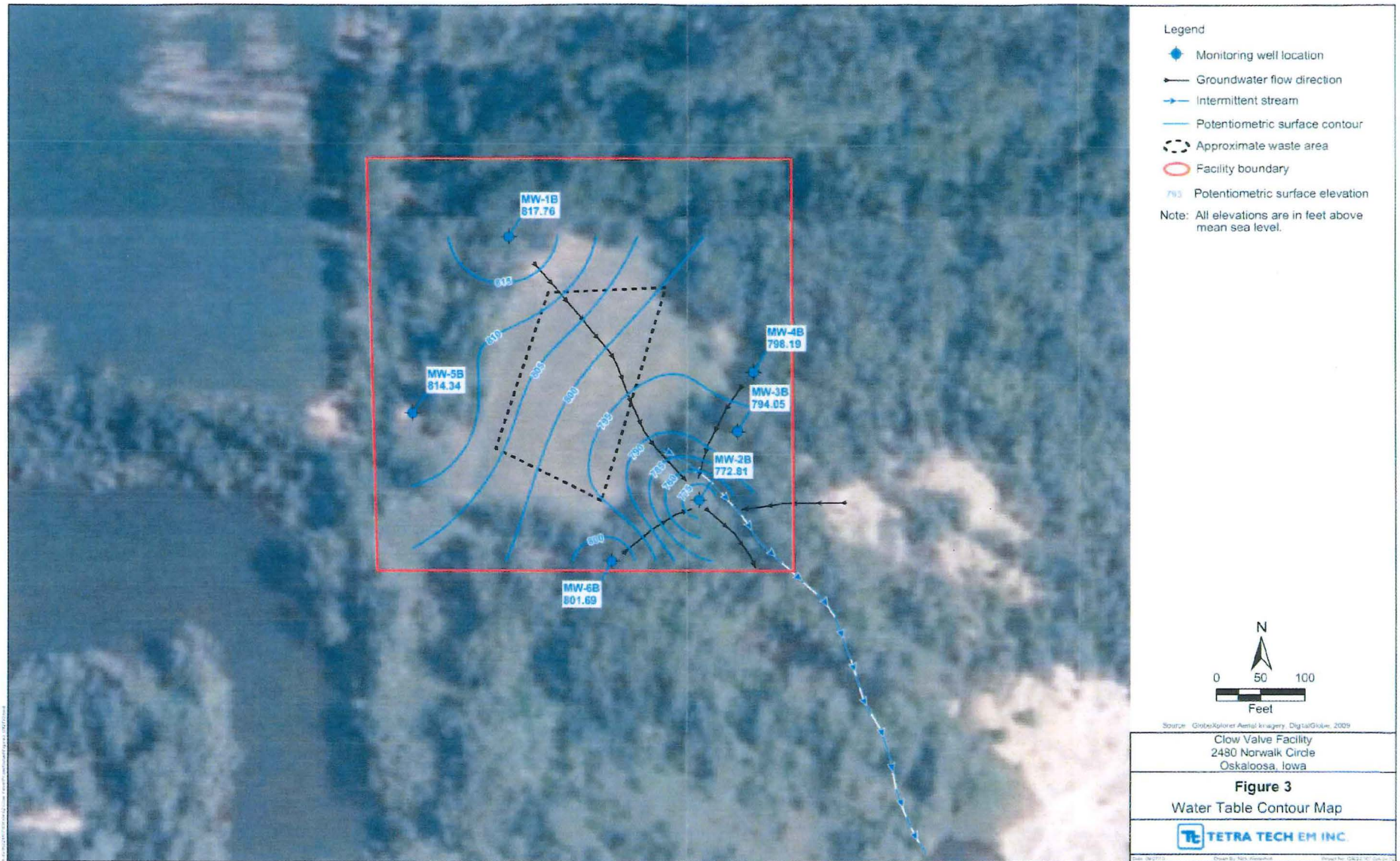
No new site activity

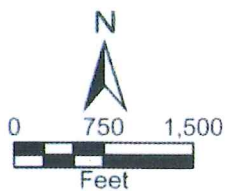
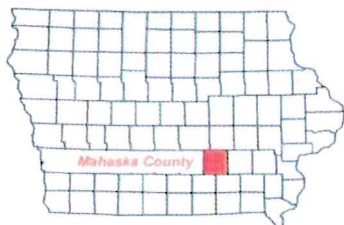
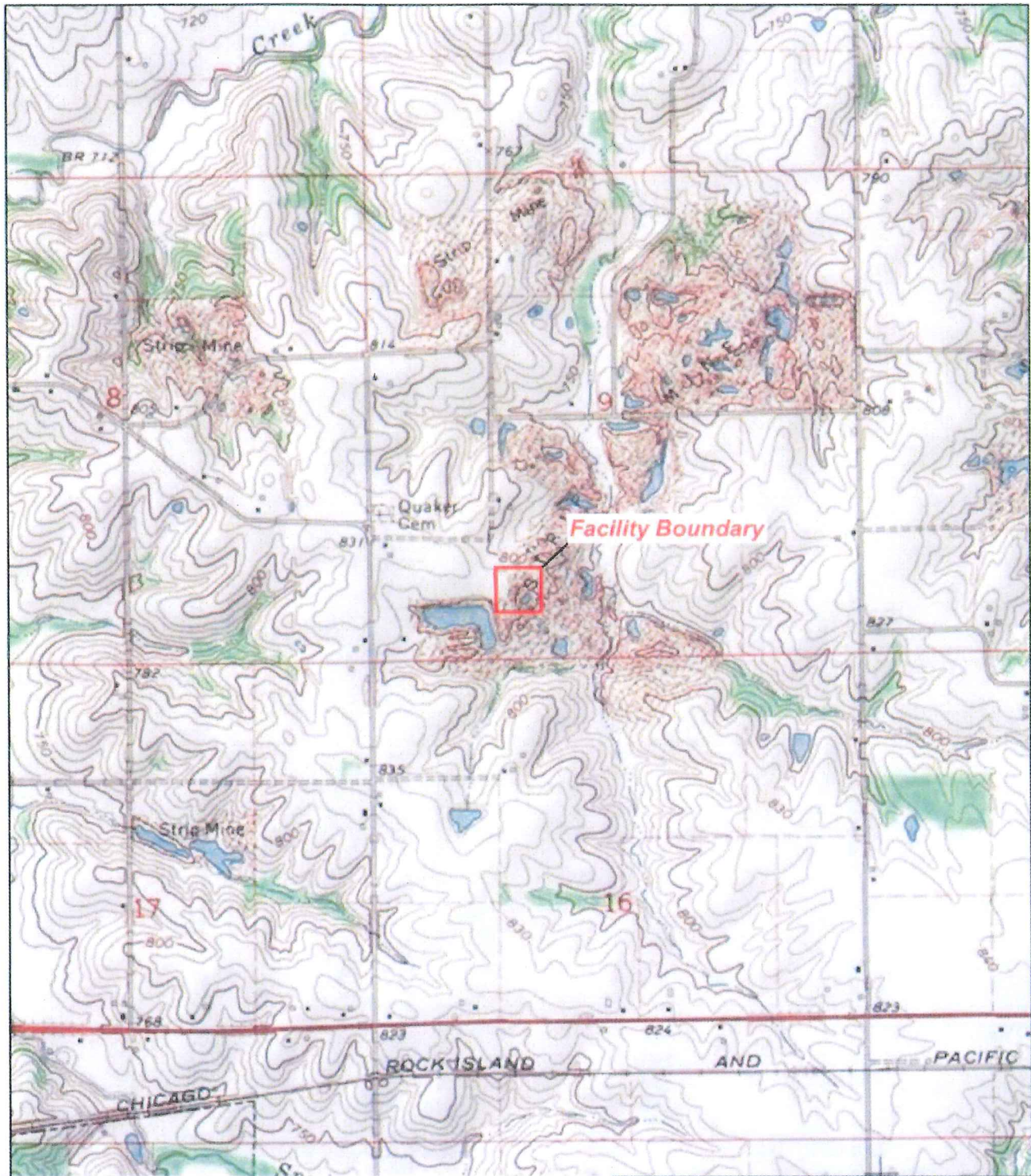
2022: No new activity

2023: No activity

2024: Sampling plan and QAPP received for upcoming five year review. No data received as of 12/20/24

2025: No activity reported to DNR.





Clow Valve Facility
2480 Norwalk Circle
Oskaloosa, Iowa

Figure 1
Facility Location Map

TETRA TECH EM INC.

Source: USGS University Park, IA 7.5 Minute Topo Quad, 1976

Date: 05/10/11

Drawn By: Gustavo Ormazo

Project No: G9022 007 038 02