

Iowa Lead Monitoring Location and Design Values 2014-2016

A design value is a tool that can be used to understand pollution levels at a specific location. A design value may be set for any pollutant. The U.S. EPA's official definition is explained this way: "a design value is the mathematically determined pollutant concentration at a particular site that must be reduced to, or maintained at or below the National Ambient Air Quality Standard to assume attainment." The design value number tells us how a particular site or area compares with the National Ambient Air Quality Standards (NAAQS).

Iowa lead monitor location and information is detailed on the following pages. The EPA design value for lead is the highest 3-month rolling average for the most recent three years. EPA promulgated new lower lead standards on October 15, 2008. A monitoring site must have a design value less than or equal to $0.15 \mu\text{g}/\text{m}^3$ to be considered "in attainment" with the lead NAAQS. Additional information on the lead pollution and regulatory actions is available here:

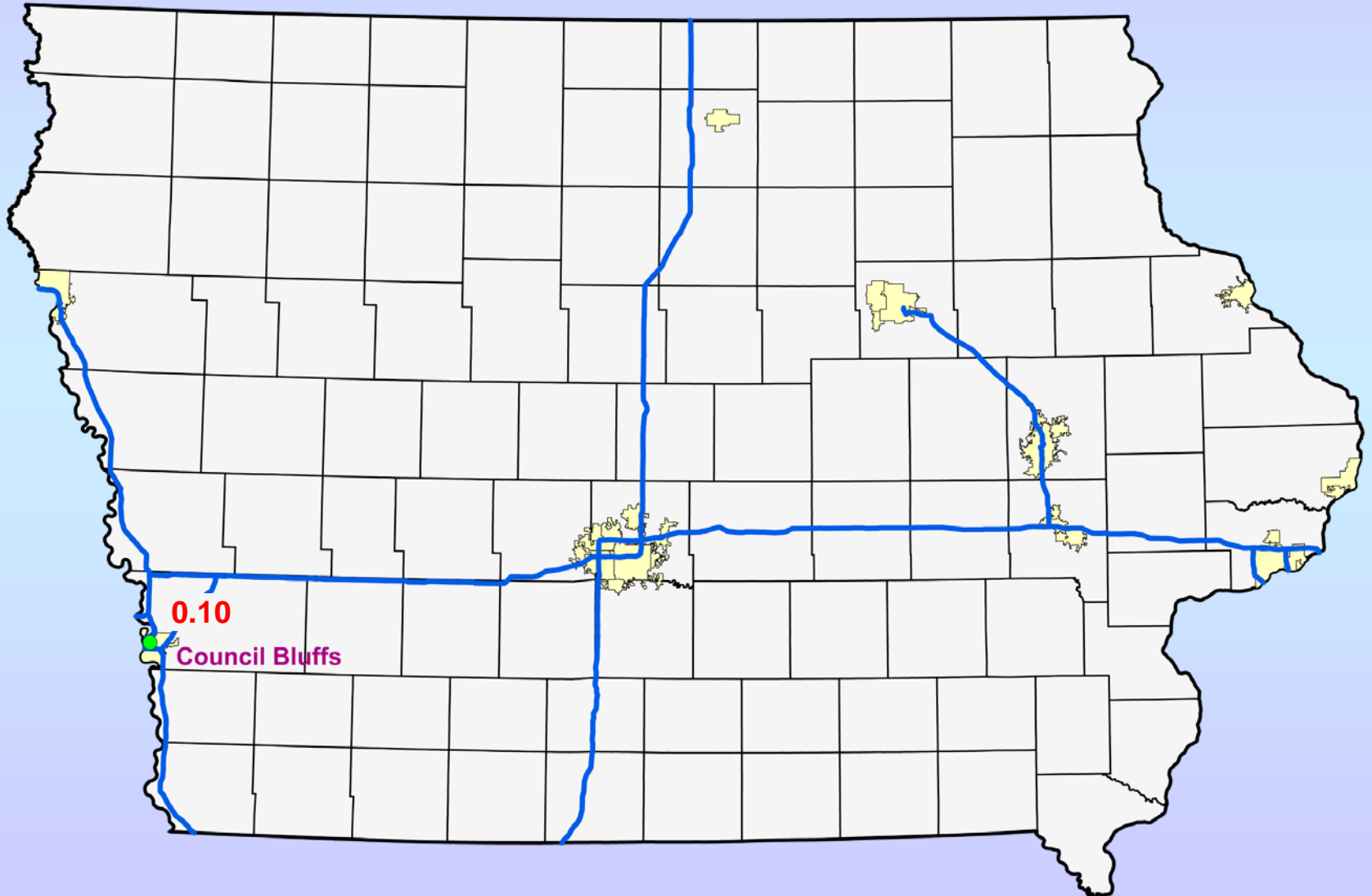
<http://www.epa.gov/lead-air-pollution>

Iowa Lead Monitoring (2016)

AQS Site ID	Site Name	Location	County
19-155-0011	Griffin Pipe	Council Bluffs	Pottawattamie

Iowa Lead Design Value: 2014-2016

Value in $\mu\text{g}/\text{m}^3$, a value greater than 0.15 exceeds the standard



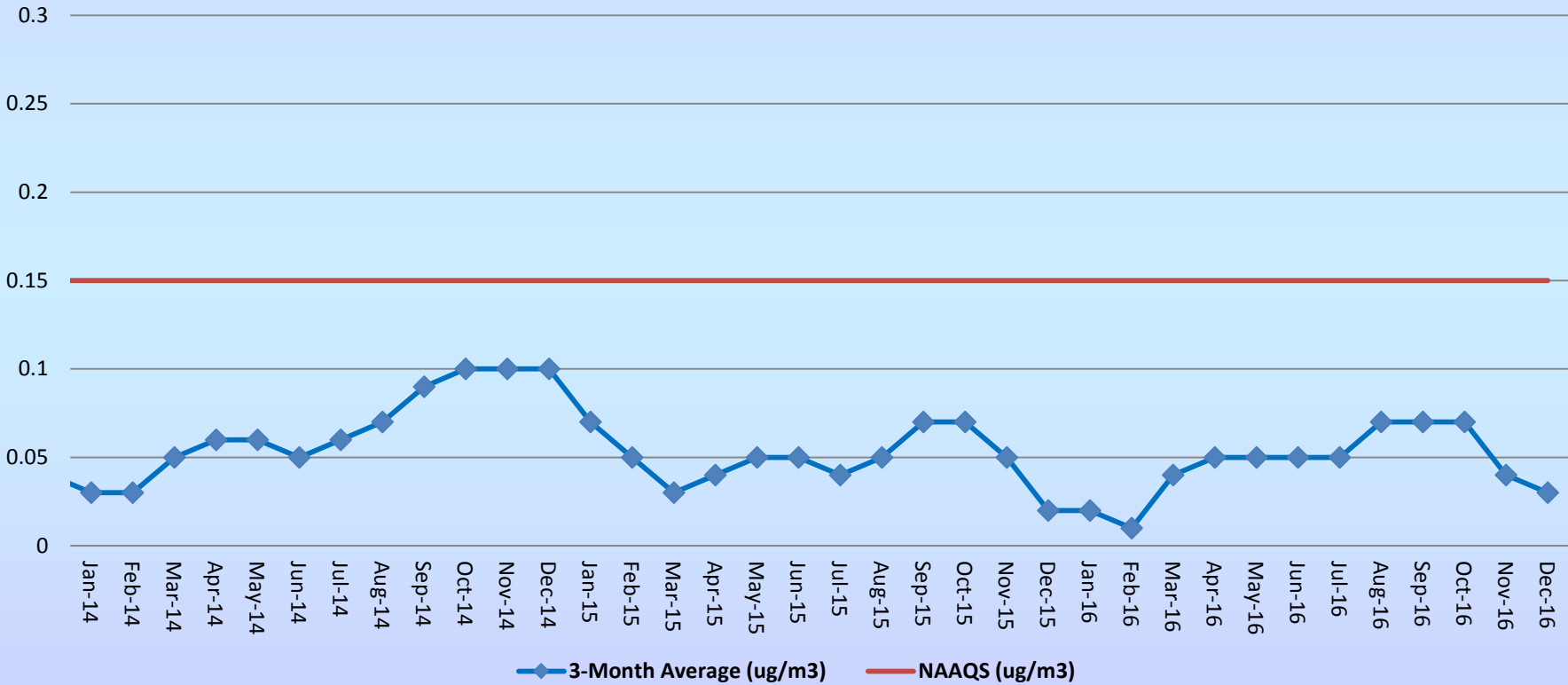
Iowa Lead Design Value 2016 – Preliminary Until May 2017

County	City	EPA Site Id	Year	Highest Rolling 3-month Average Concentration ($\mu\text{g}/\text{m}^3$)	3-year Maximum Rolling Average
Pottawattamie	Council Bluffs	19-155-0011	2014	0.10	
			2015	0.07	
			2016	0.07	0.10
(Three Year Averages Greater Than $0.15 \mu\text{g}/\text{m}^3$ Indicate Non-Attainment with the NAAQS)					

Council Bluffs Lead, 3-Month Rolling Average: 2014-2016

(Concentration in $\mu\text{g}/\text{m}^3$)

Council Bluffs Lead, 3-Mo. Rolling Avg.



Web Resources

Iowa Real-time Data Reporting :

In Polk County:

<http://www.polkcountyiowa.gov/airquality/air-quality-monitoring/current-aqi-real-time-data/>

In Linn County:

<http://www.linncleanair.org/Default.aspx>

Outside Polk and Linn Counties:

<http://www.shl.uiowa.edu/env/ambient/index.xml>

Design Values for All Pollutants Nationwide:

<http://www.epa.gov/airtrends/values.html>

Historical Air Pollution Data for Iowa and Other States:

<http://www.epa.gov/airdata/>