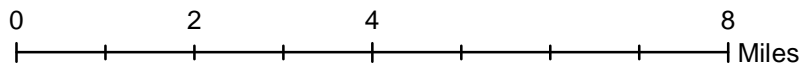
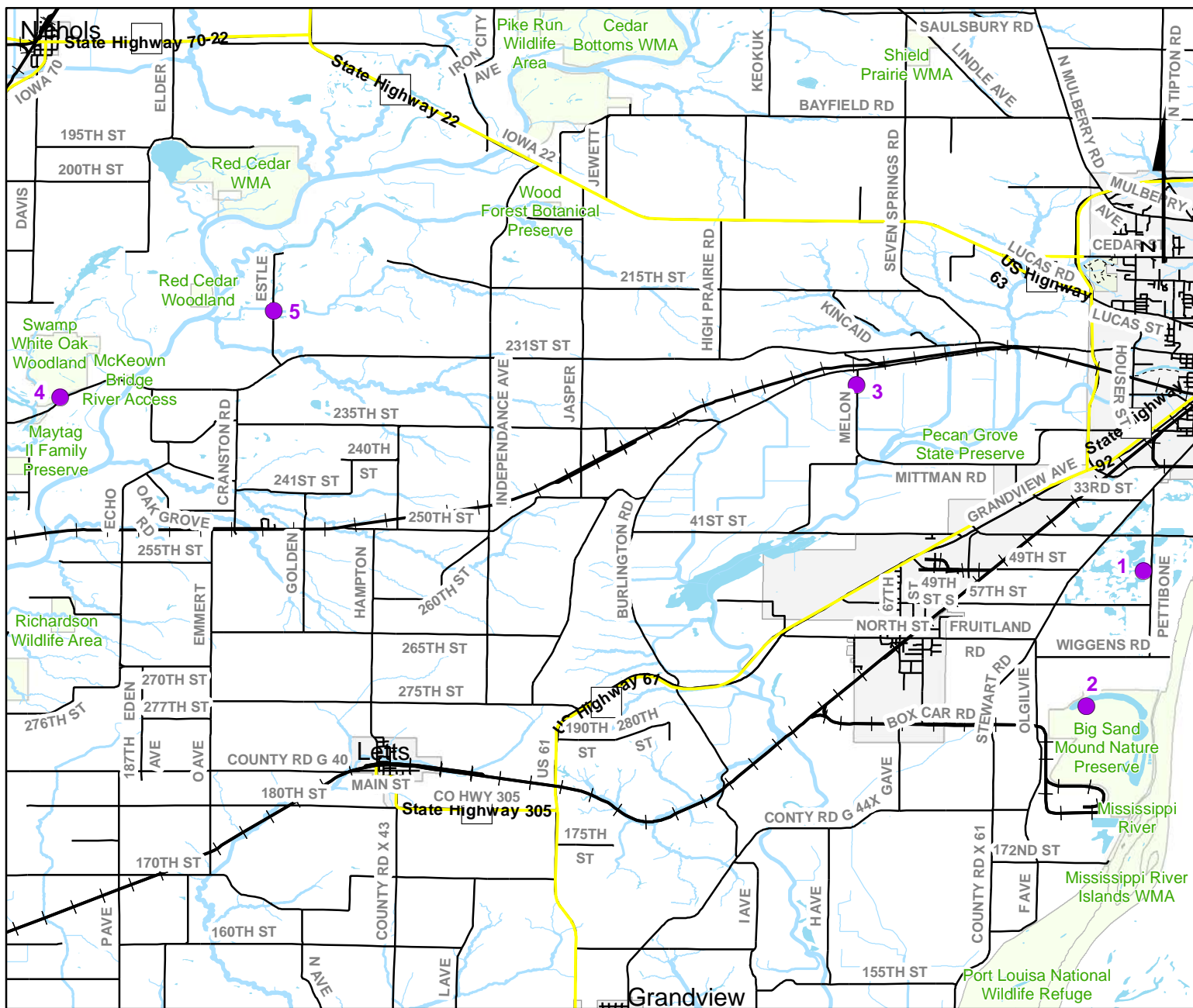


Volunteer Wildlife Monitoring Program (VWMP) Frog and Toad Survey



Route ID: 319 County: Muscatine

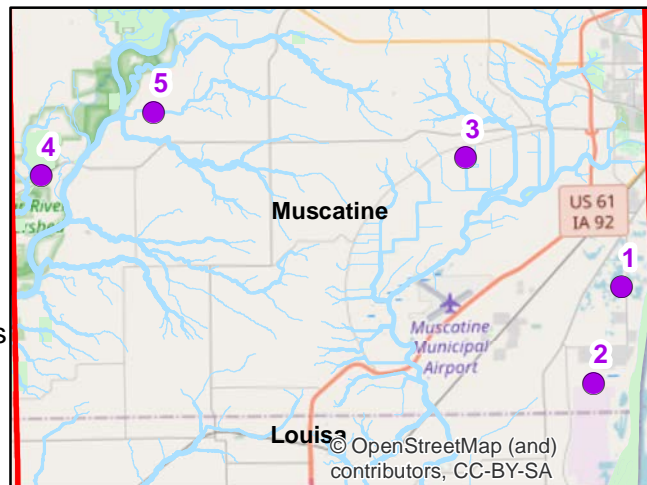


DNR
Volunteer Wildlife Monitoring Program



Legend

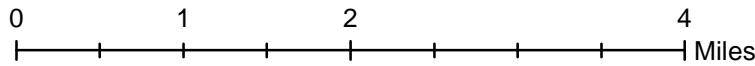
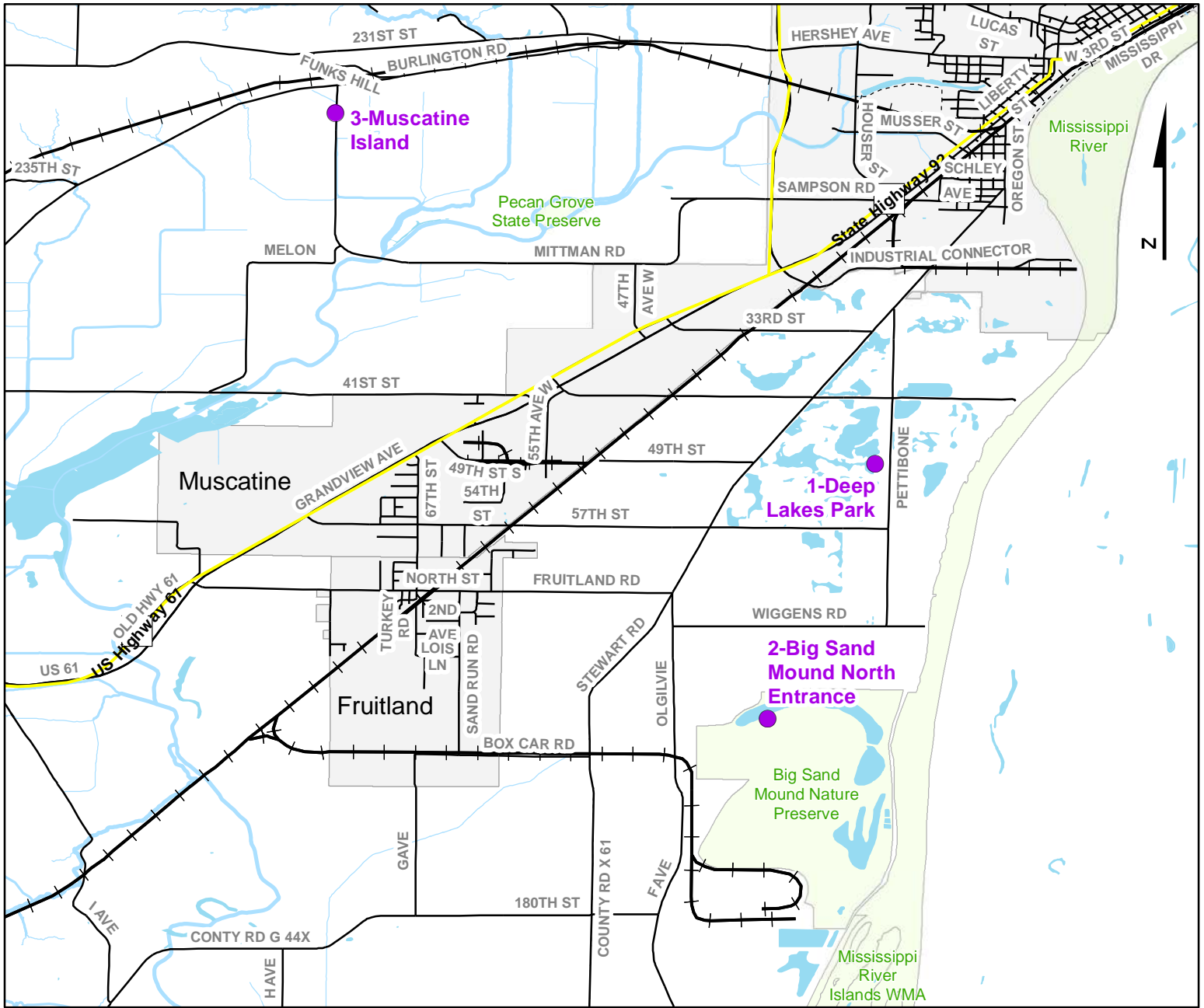
- Trails
- Survey Stops



Volunteer Wildlife Monitoring Program (VWMP) Frog and Toad Survey



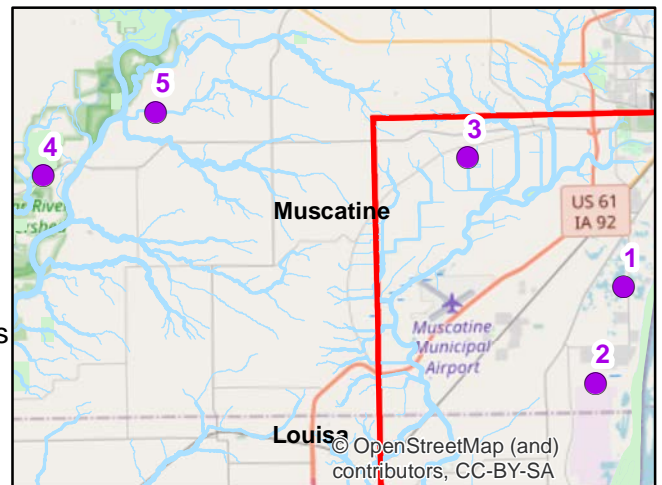
Route ID: 319 County: Muscatine



DNR
Volunteer Wildlife Monitoring Program

Legend

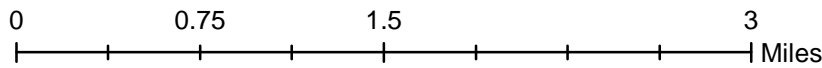
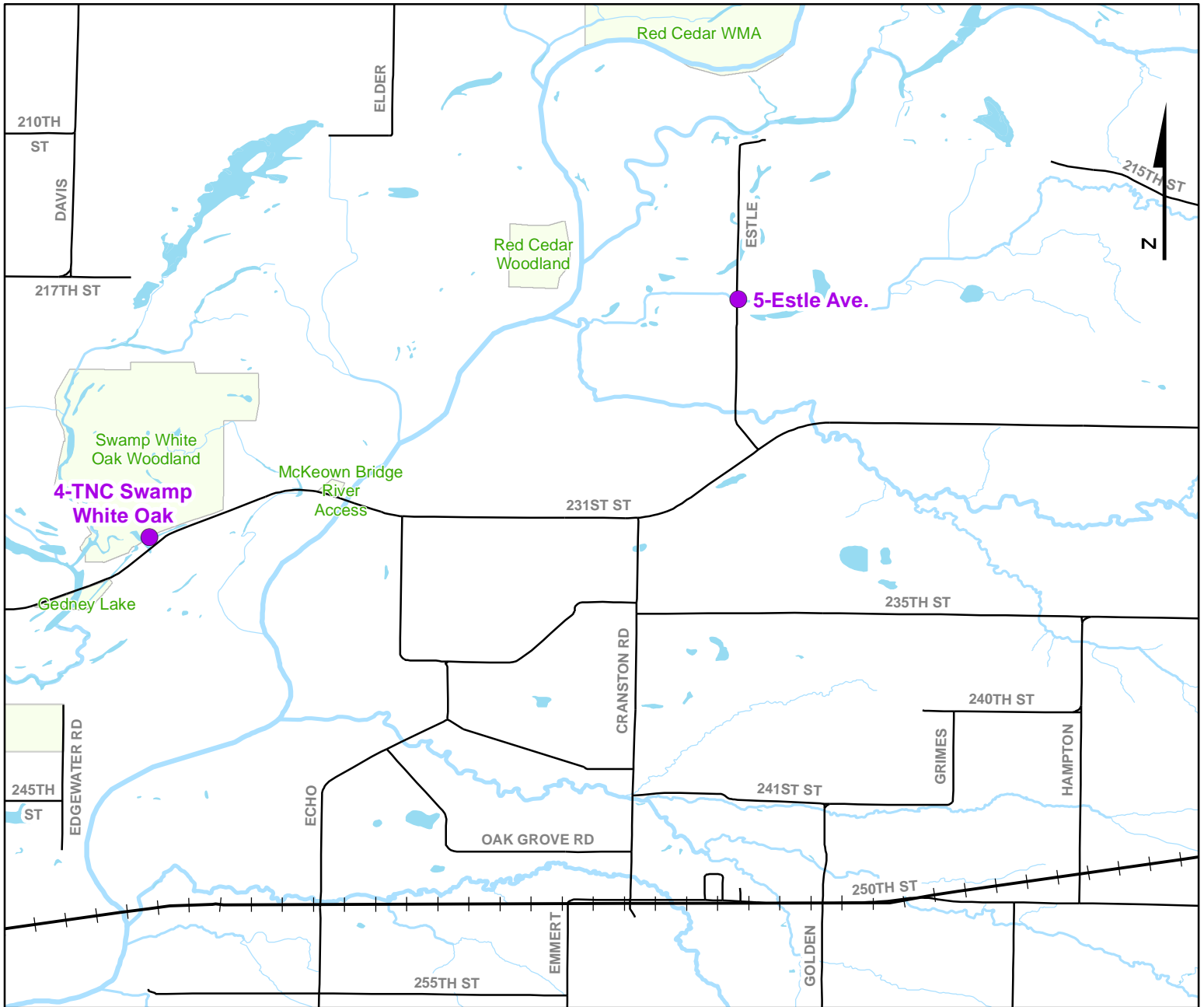
- Trails
- Survey Stops



Volunteer Wildlife Monitoring Program (VWMP) Frog and Toad Survey



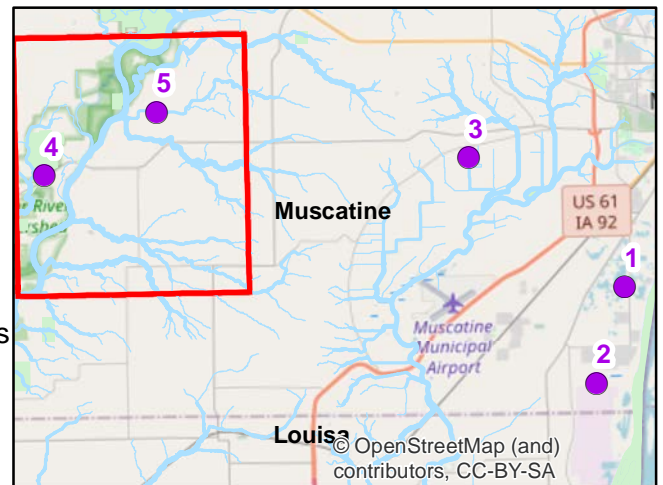
Route ID: 319 County: Muscatine



Volunteer Wildlife Monitoring Program

Legend

- Trails
- Survey Stops





Frog and Toad Call Survey Route Description

Route ID **319**

Established: **2023**

Site Number	Name	County	Latitude	Longitude	Directions
1	Deep Lakes Park	Muscatine	41.370235	-91.077676	1 mile south of Muscatine on Pettibone Ave. This is a reclaimed sand/gravel mining site. 435 acre site, 135 acres of which is open water. Terrain is rolling hills with sand substrate. Numerous trees and shrubs in the area.
2	Big Sand Mound North Entrance	Muscatine	41.341837	-91.089684	West of Bayer Plant, Muscatine. Just off Stewart Road. Water levels related to level of Mississippi and recent rains. Private Property, permission needed to access for surveys.
3	Muscatine Island	Muscatine	41.409315	-91.137781	On Mittman Rd., half mile west of Old Burlington Rd. Water in Ditch along roadway.
4	TNC Swamp White Oak	Muscatine	41.406704	-91.304738	231st St. TNC Preserve. Listen at Entrance
5	Estle Ave.	Muscatine	41.424759	-91.259995	1 mile north on Estle from 231st St. at culverts under roads. TNC pond borders road.