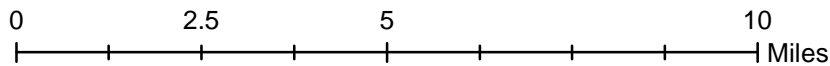
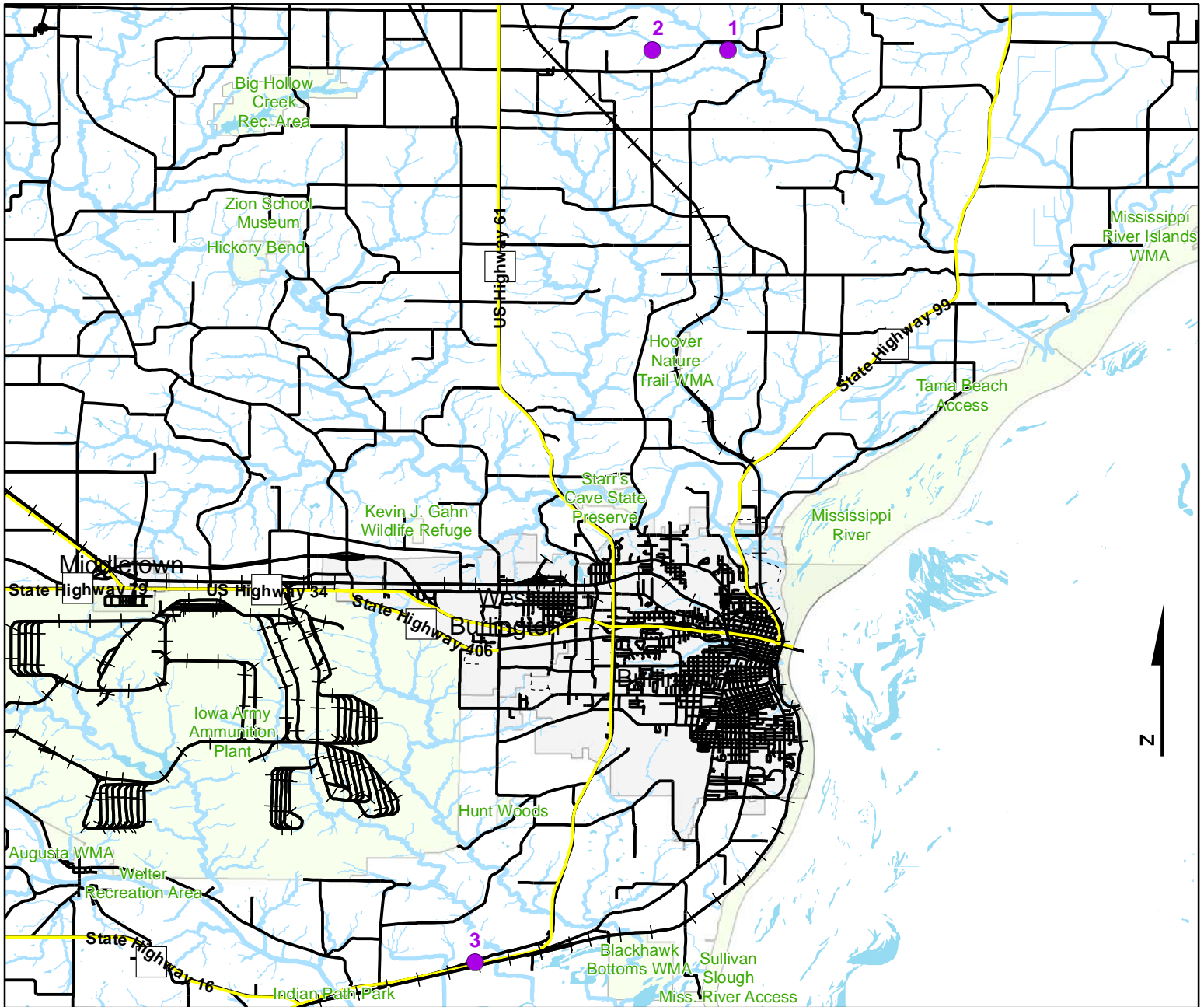


Volunteer Wildlife Monitoring Program (VWMP) Frog and Toad Survey

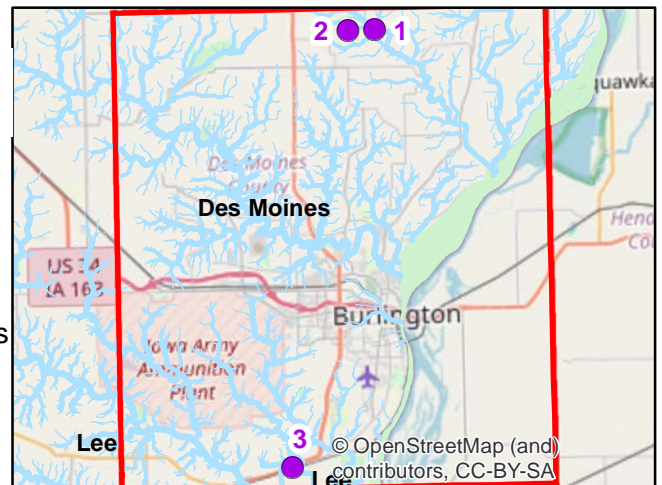


Route ID: 145 County: Des Moines



Legend

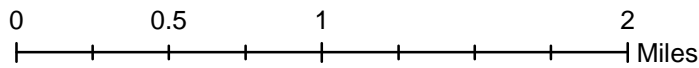
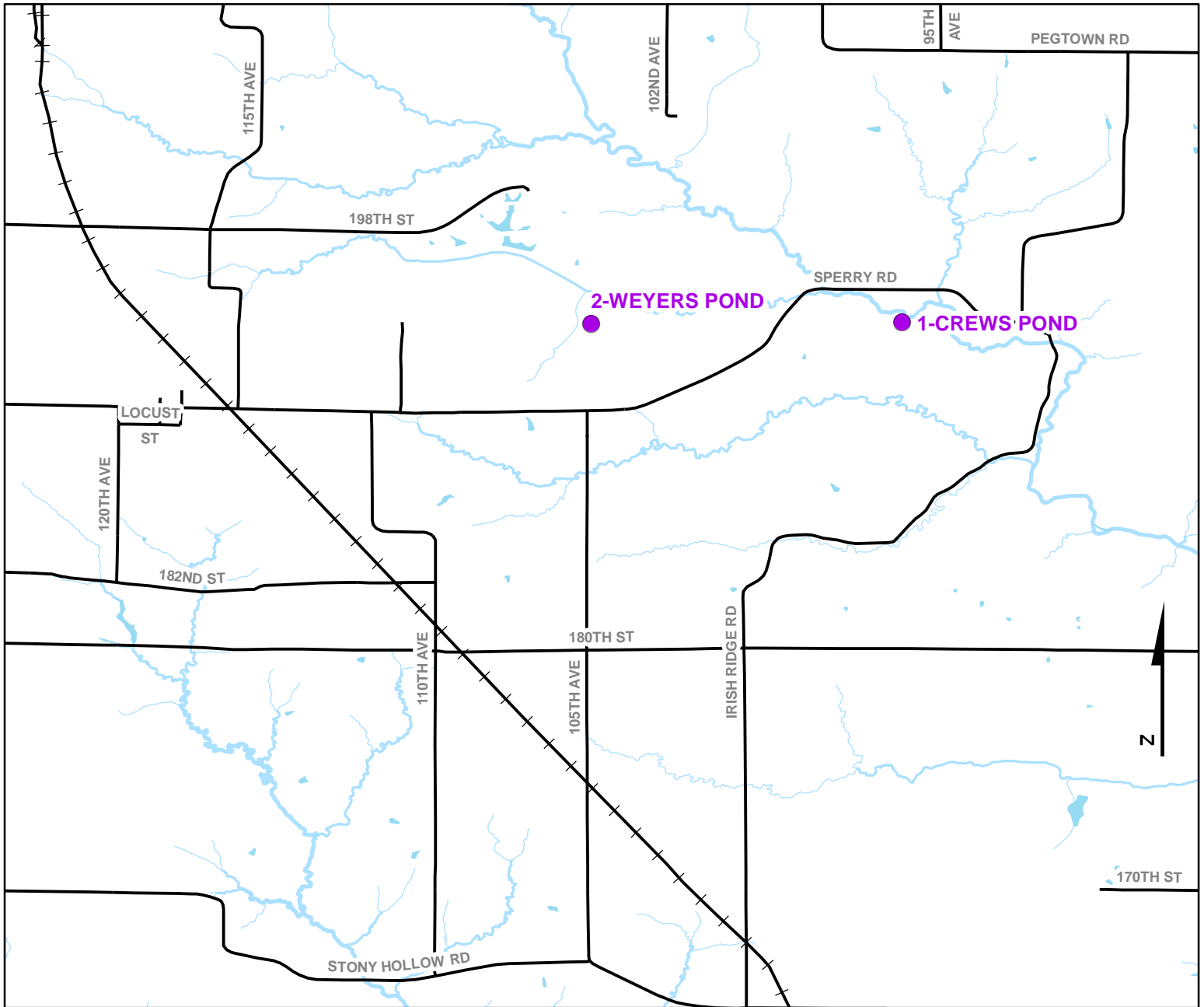
- Trails
- Survey Stops



Volunteer Wildlife Monitoring Program (VWMP) Frog and Toad Survey



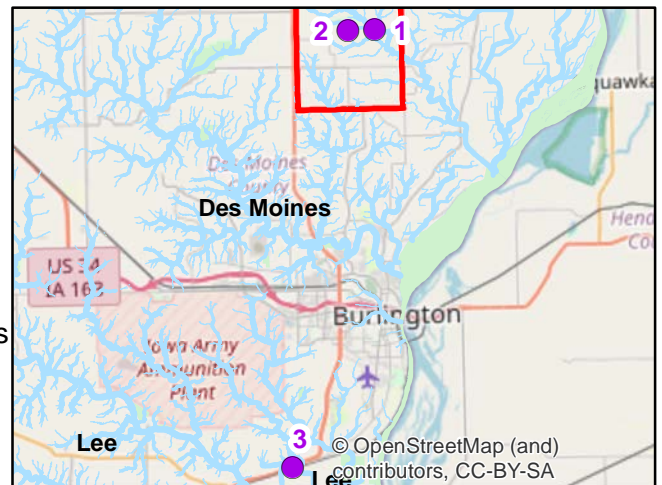
Route ID: 145 County: Des Moines



DNR
Volunteer
Wildlife
Monitoring
Program

Legend

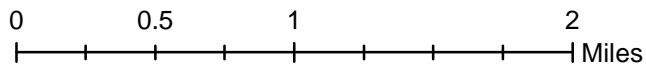
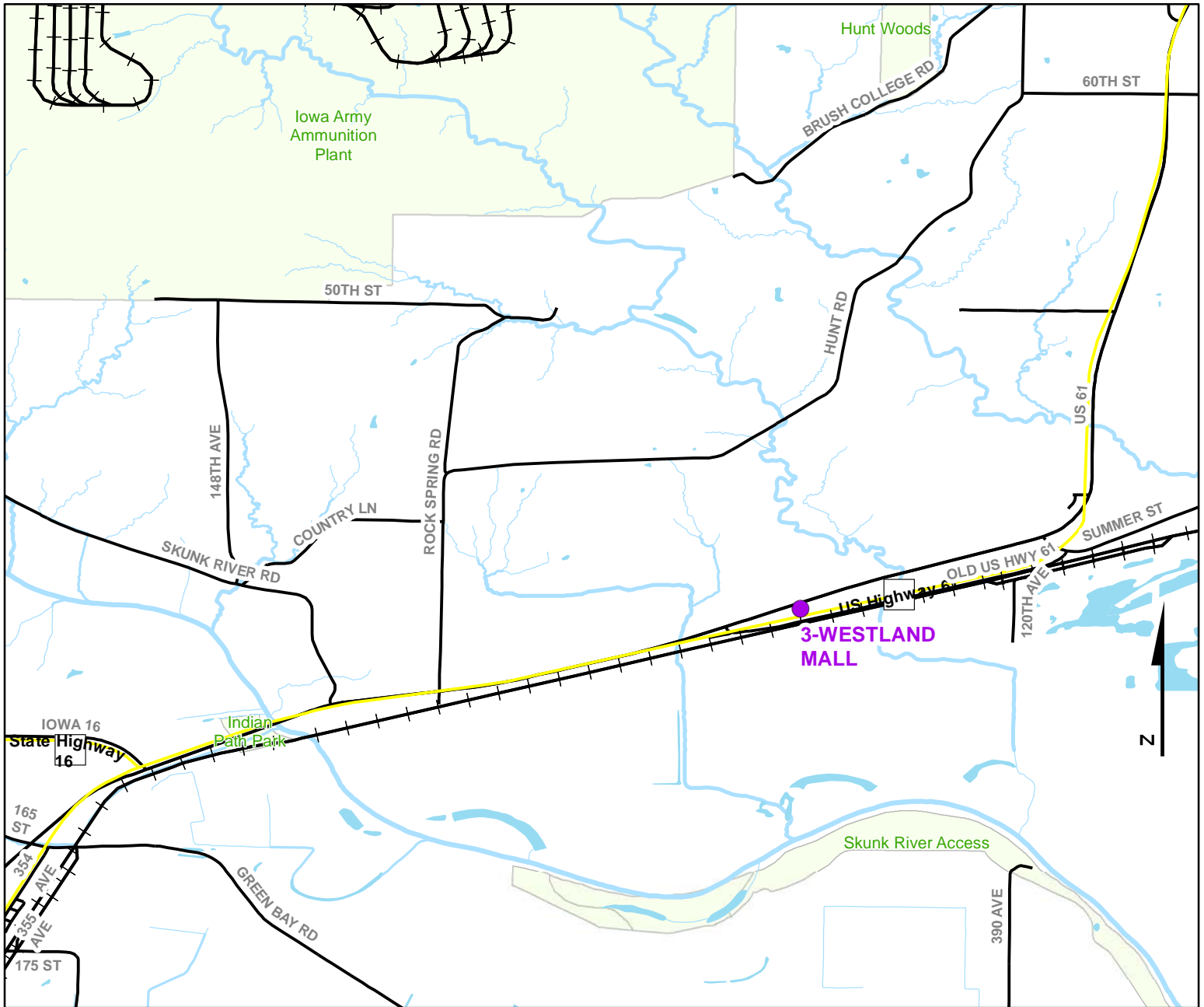
- Trails
- Survey Stops



Volunteer Wildlife Monitoring Program (VWMP) Frog and Toad Survey



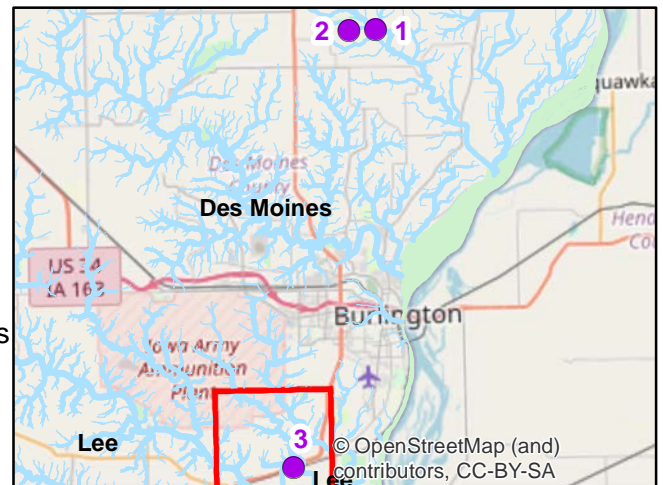
Route ID: 145 County: Des Moines



DNR
Volunteer
Wildlife
Monitoring
Program

Legend

- Trails
- Survey Stops



VOLUNTEER WILDLIFE MONITORING PROGRAM

Survey Route Description

Route 145

Name

Address

Phone

E-mail

Site No	Site Name	County	T	R	S	Q	Latitude	Longitude	Wetland Type
1	CREWS POND	Des Moines	71N	2W	8		40.9623135	-91.1127688	Permanent Open Water
2	WEYERS POND	Des Moines	71N	2W	7		40.9622302	-91.1317062	Permanent Open Water
3	WESTLAND MALL	Des Moines	69N	3W	35	NW	40.7332706	-91.1761847	Cattail Marsh