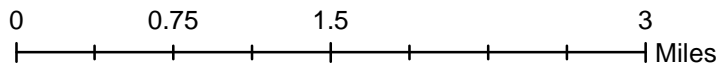
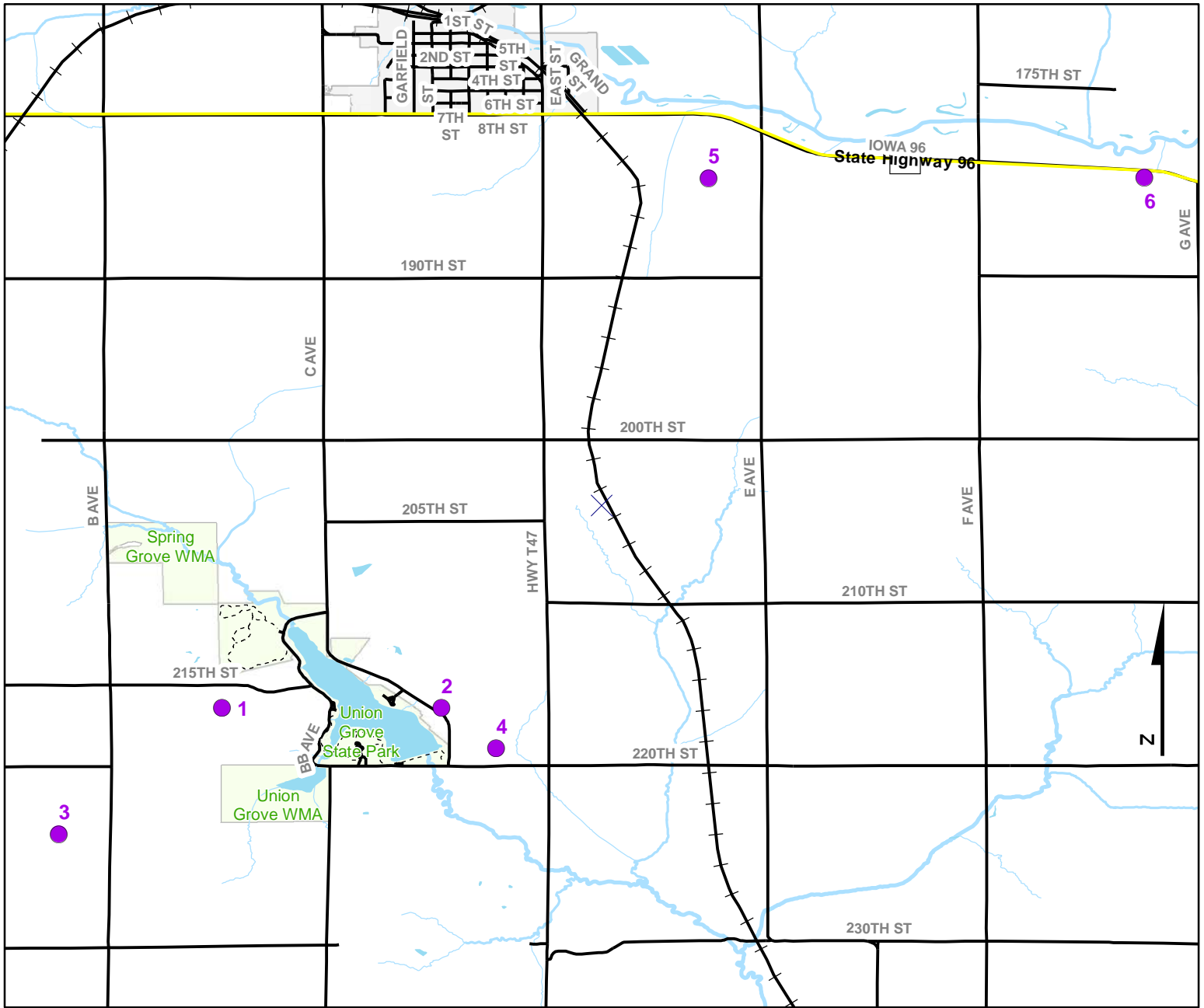


Volunteer Wildlife Monitoring Program (VWMP) Frog and Toad Survey



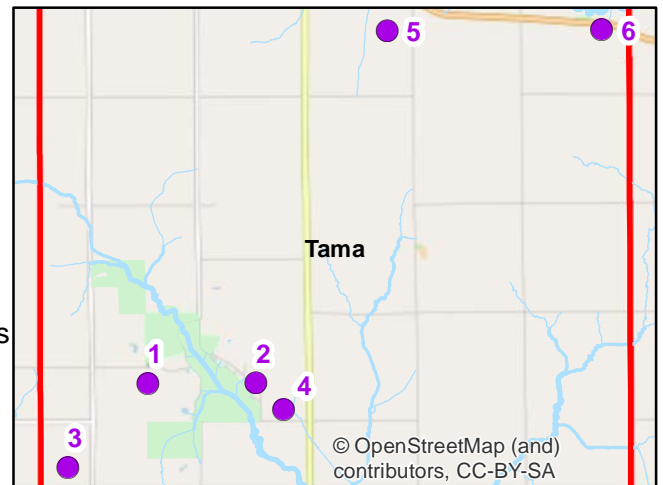
Route ID: 136 County: Tama



Volunteer Wildlife Monitoring Program

Legend

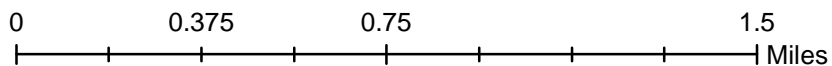
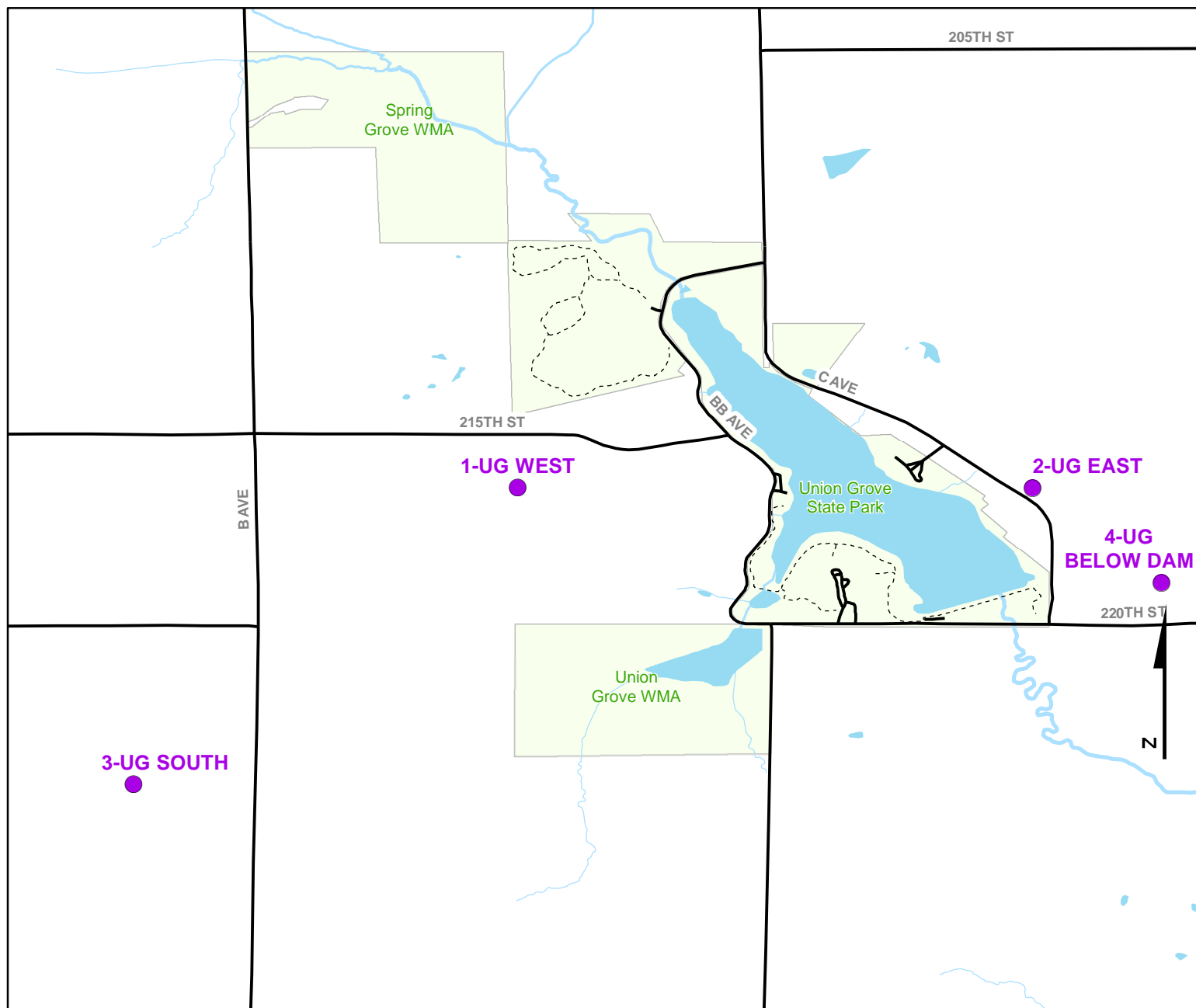
- Trails
- Survey Stops



Volunteer Wildlife Monitoring Program (VWMP) Frog and Toad Survey

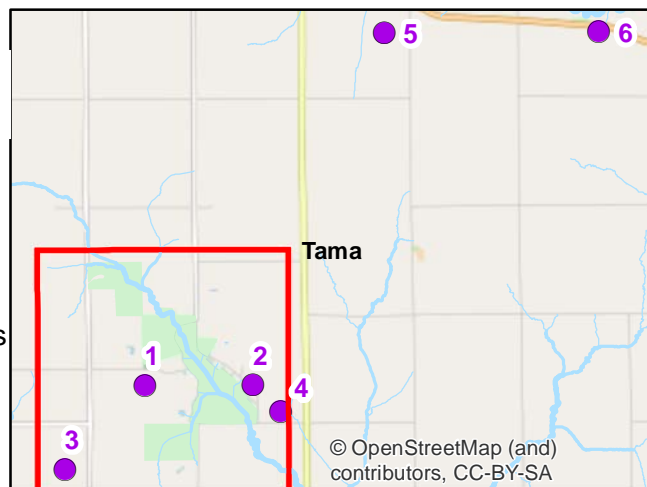


Route ID: 136 County: Tama



Legend

- Trails
- Survey Stops

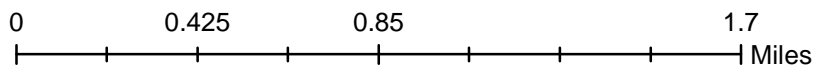
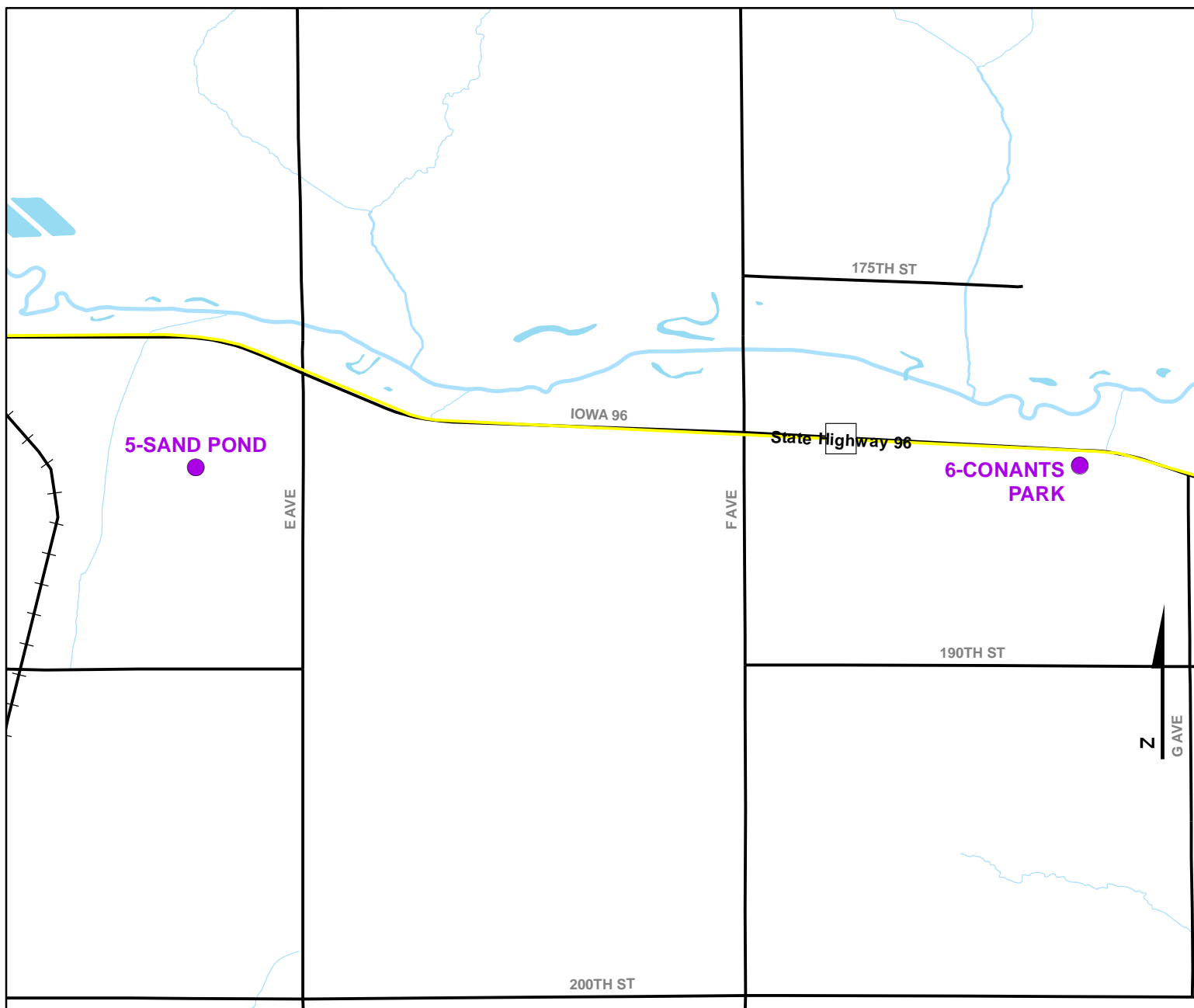


© OpenStreetMap (and contributors, CC-BY-SA)

Volunteer Wildlife Monitoring Program (VWMP) Frog and Toad Survey

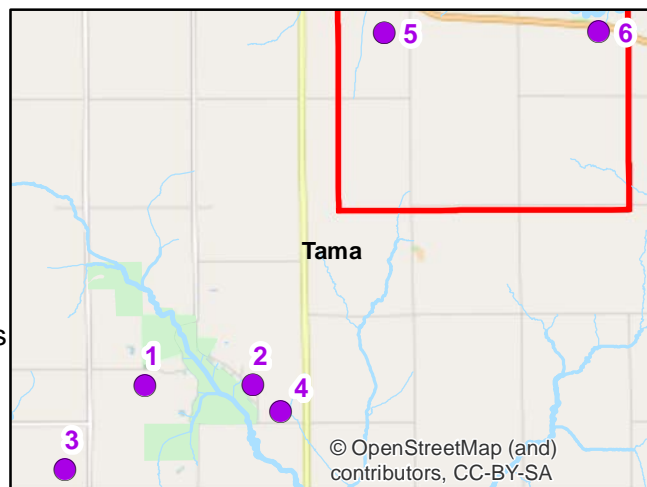


Route ID: 136 County: Tama



Legend

- Trails
- Survey Stops



VOLUNTEER WILDLIFE MONITORING PROGRAM

Survey Route Description

Route 136

Name

Address

Phone

E-mail

Site No	Site Name	County	T	R	S	Q	Latitude	Longitude	Wetland Type
1	UG WEST	Tama	85N	16W	32		42.1287069	-92.7371221	Open Marsh
2	UG EAST	Tama	85N	16W	33		42.1286923	-92.7176910	Open Marsh
3	UG SOUTH	Tama	84N	16W	6	NE	42.1175104	-92.7516122	Cattail Marsh
4	UG BELOW DAM	Tama	85N	16W	33	SE	42.1251294	-92.7128372	Timbered Riverine
5	SAND POND	Tama	85N	16W	15	NE	42.1756944	-92.6939531	Permanent Open Water
6	CONANTS PARK	Tama	85N	16W	13	NE	42.1757830	-92.6553127	Timbered Riverine