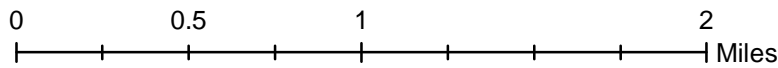
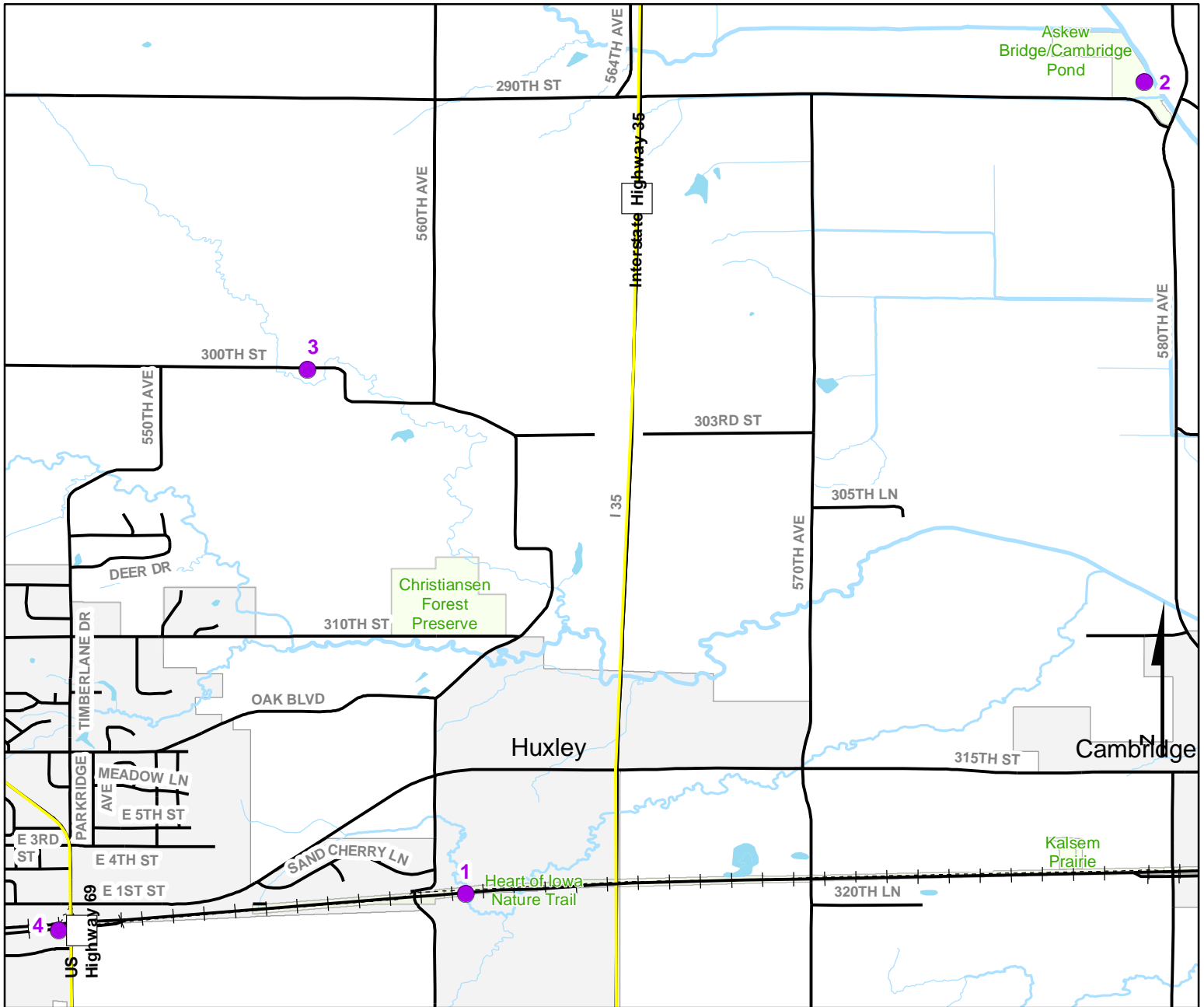


# Volunteer Wildlife Monitoring Program (VWMP) Frog and Toad Survey

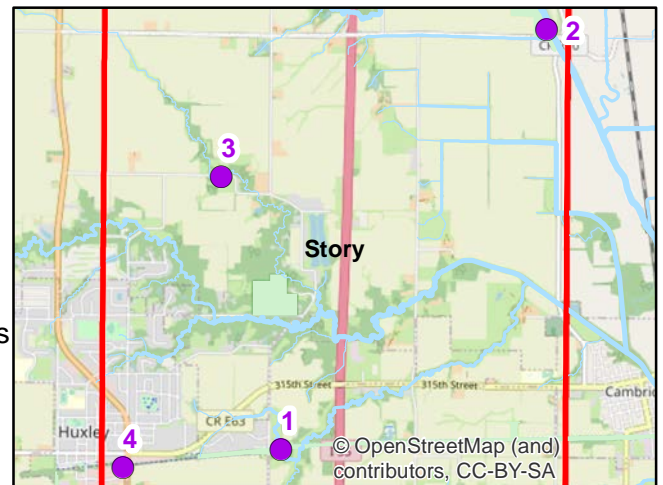


Route ID: 190 County: Story



## Legend

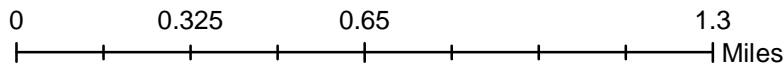
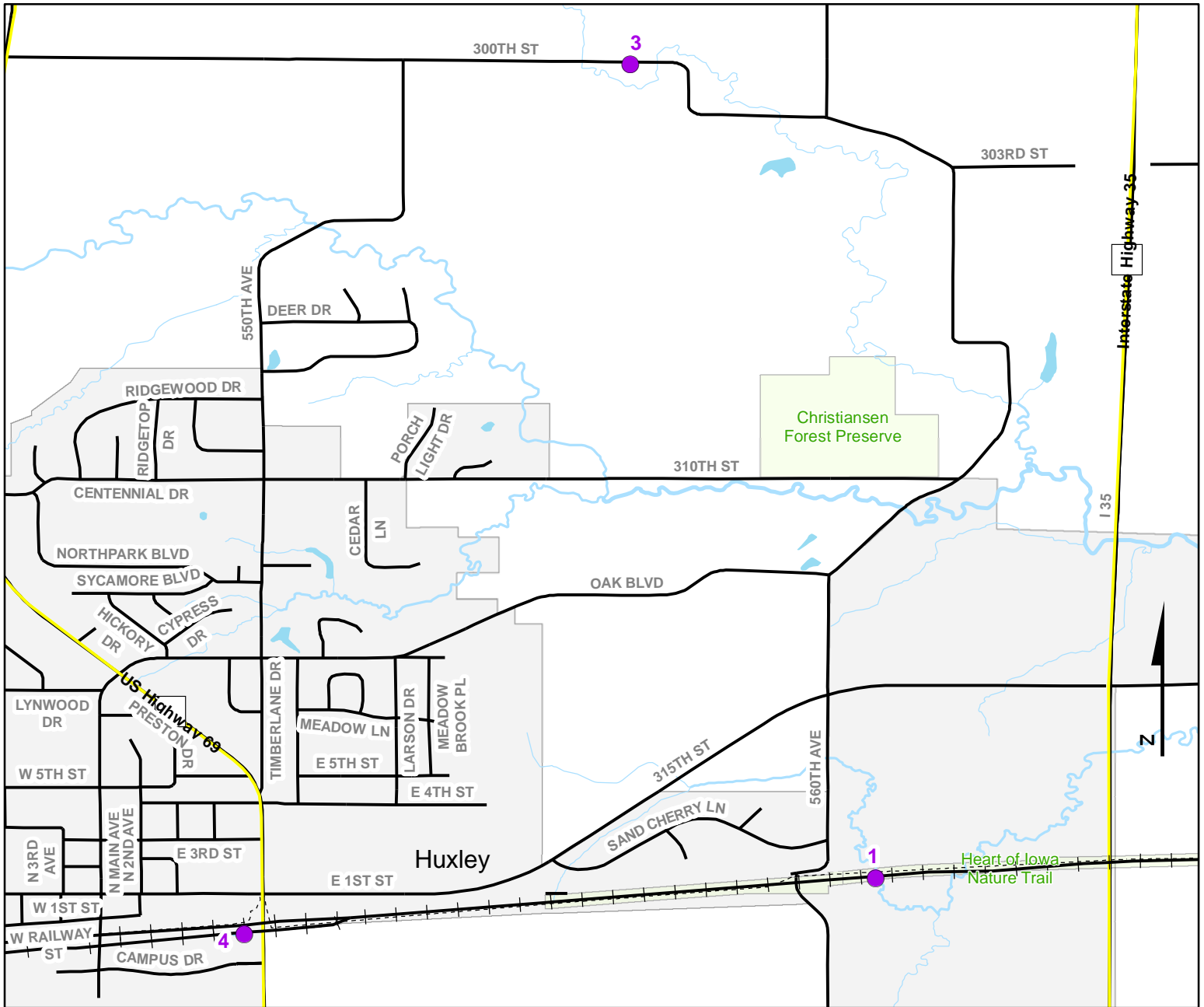
- Trails
- Survey Stops



# Volunteer Wildlife Monitoring Program (VWMP) Frog and Toad Survey



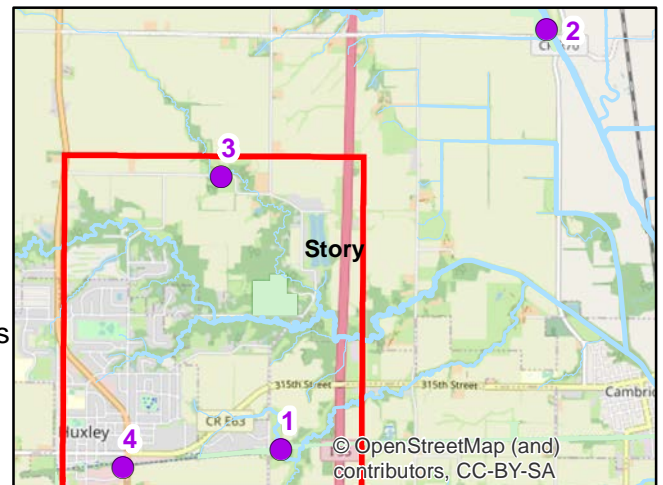
Route ID: 190 County: Story



**DNR**  
**Volunteer Wildlife Monitoring Program**

## Legend

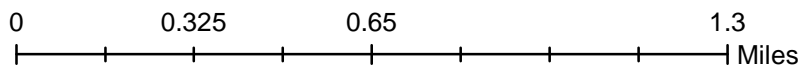
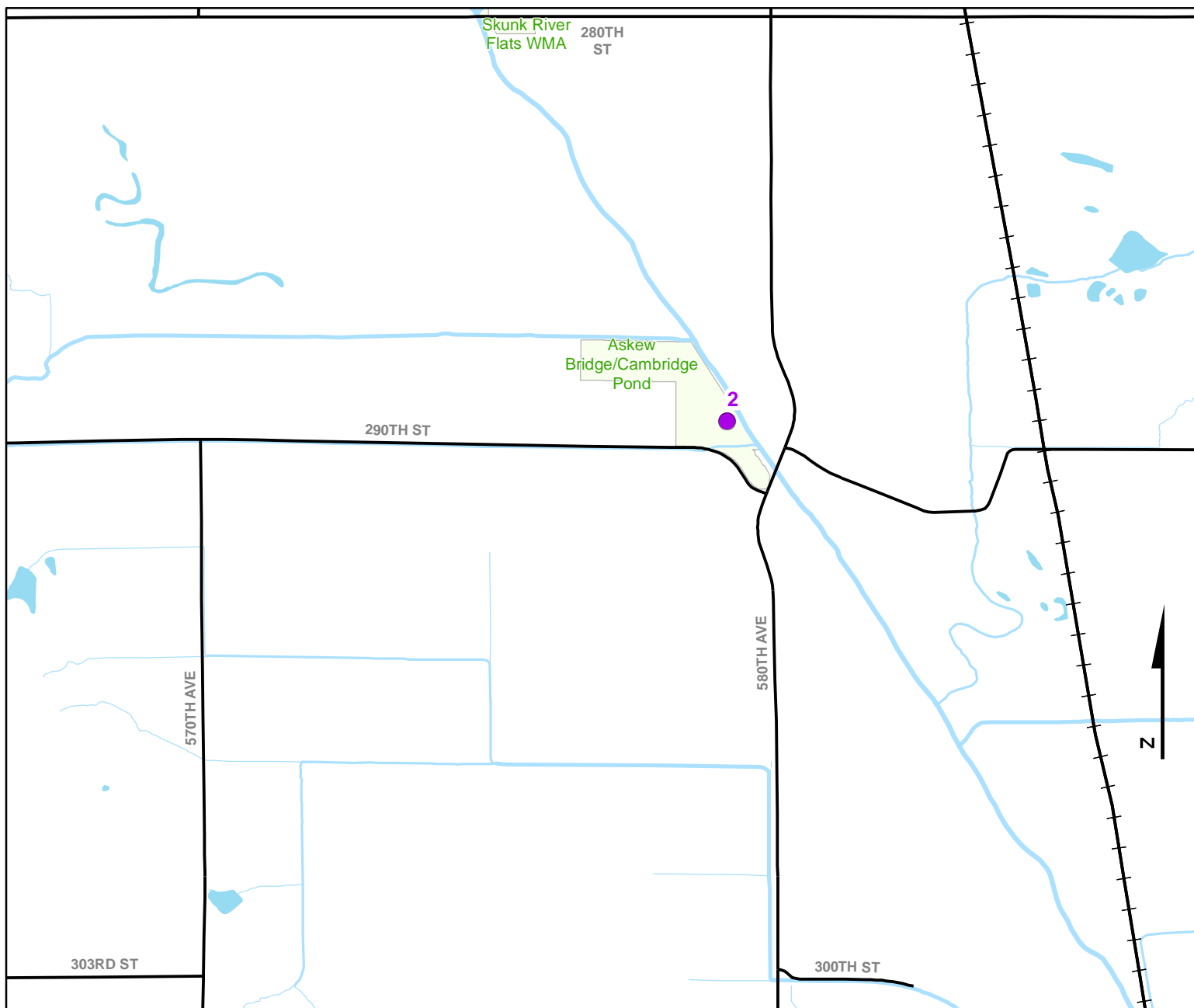
- Trails
- Survey Stops



# Volunteer Wildlife Monitoring Program (VWMP) Frog and Toad Survey

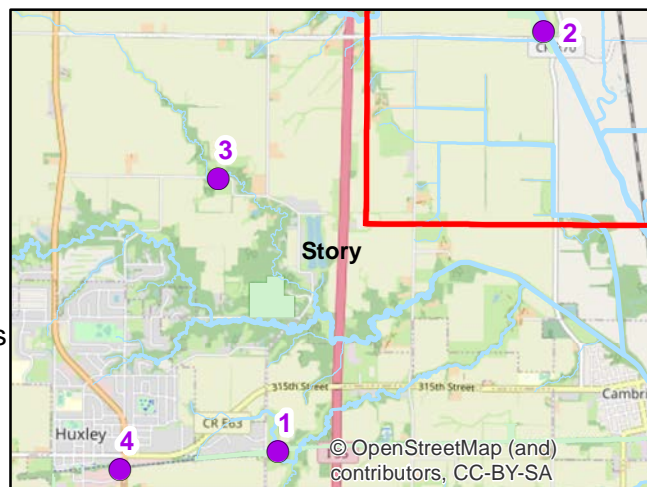


Route ID: 190 County: Story



## Legend

- Trails
- Survey Stops





# Frog and Toad Call Survey Route Description

Route ID: 190

Established: 1998

Site Number	Name	County	Latitude	Longitude	Directions
1	BIKE TRAIL	Story	41.892879	-93.57919	
2	ASKEW	Story	41.9366865	-93.542631	Small pond beside parking circle at Askew River bridge
3	HUXLEY CREEK	Story	41.9211889	-93.5877601	
4	BUSINESS PARK	Story	41.890956	-93.601167	