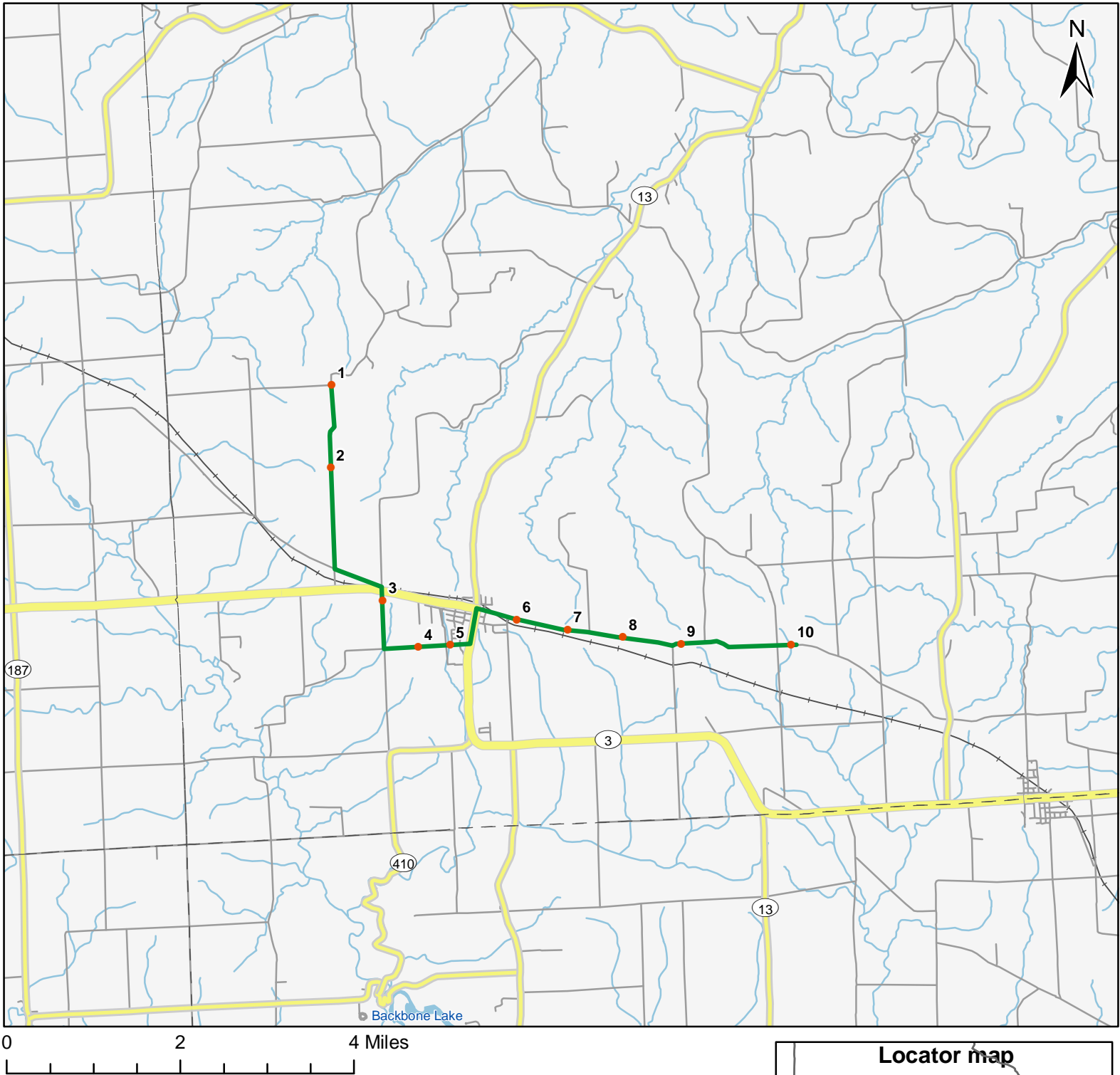


North American Amphibian Monitoring Program



Route: 360512 Strawberry Point, IA



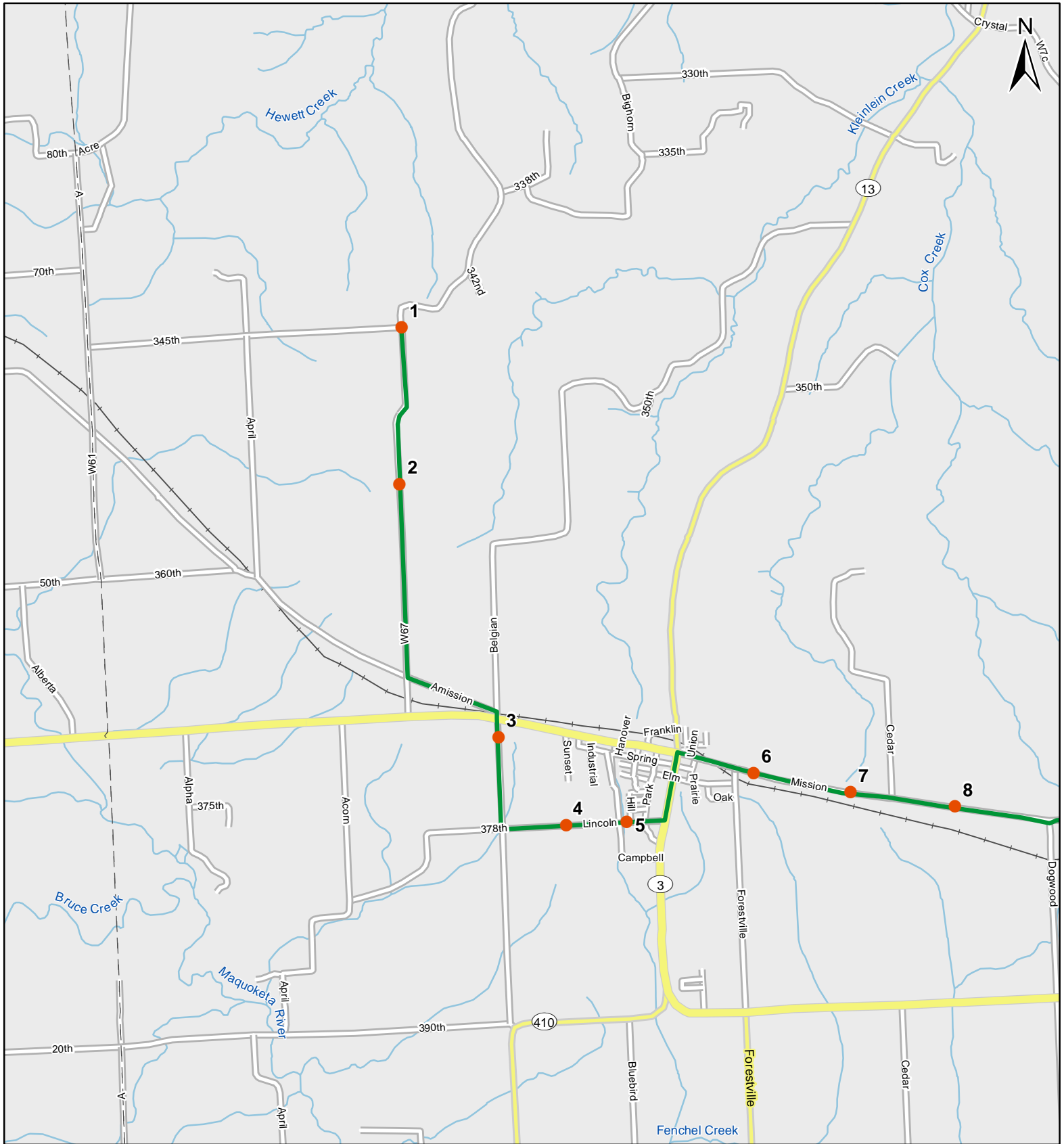
Legend

- Stop Locations
- Route Path



For more information, please visit the NAAMP website:
<http://www.pwrc.usgs.gov/naamp/>

Route: 360512 Strawberry Point, IA



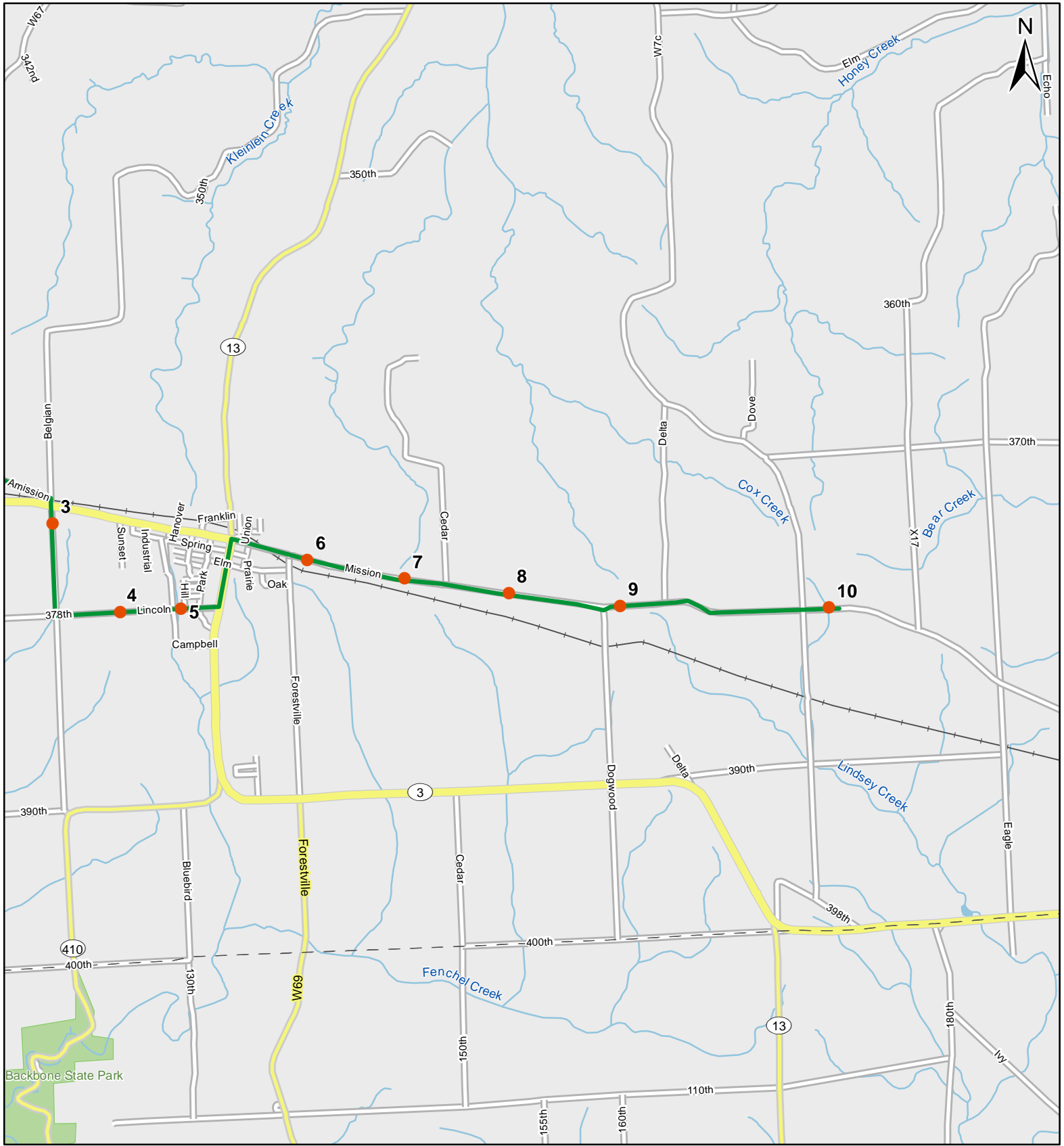
0 1 Miles

1:50,000

Legend

- Stop Locations
- Route Path

Route: 360512 Strawberry Point, IA



0 1 Miles

1:50,000

Legend

- Stop Locations
- Route Path



Frog and Toad Call Survey Route Description

Route ID **360512**

Established:

Site Number	Name	County	Latitude	Longitude	Directions
1	0	Clayton	42.7243996	-91.5664978	At corner of 345th and St. Sebald road facing south. Deep ditches on either side of road, particularly the left, which may hold water
2	1	Clayton	42.7097015	-91.5678024	Drive south on St. Sebald for ~1 mile. Stop is by a farmstead with shrubby fencerow on left and house on right. Ditches with cattails on both sides particularly on right.
3	3	Clayton	42.6856003	-91.5568008	At 2.2 miles turn left on Amission Rd. Turn right on Belgian rd. and go south. Cross over 3 and drive ~100 yards. Stop is by pond on left (east of road) about 50 yards off road.
4	4	Clayton	42.6769981	-91.5488968	Turn left on 378th at ~3.6 miles. Drive east ~0.4 miles, pass cream brick house. Stop at large stand of cattails in left hand ditch. Also on right side of road are a couple of grassed waterways through the crop field.
5	4.4	Clayton	42.6771011	-91.5410995	Drive west. Just after entering Strawberry Point city limits (road becomes paved) stop at small creek with large culverts either side of road.
6	5.5	Clayton	42.6809998	-91.5248032	Continue into town. At 'T' turn left on Commercial Dr. the turn right on E. Mission in the center of town. Stop is small wooded creek across the road from the cemetery.



Frog and Toad Call Survey Route Description

7	6.2	Clayton	42.6787987	-91.5126038	Continue east out of town on E. Mission (turns gravel). Stop halfway between 2 farm houses - hilly crop fields on either side of road criss-crossed with grassed waterways.
8	6.8	Clayton	42.676899	-91.4993973	Continue east. Drive past the 2nd farmstead and just after big shed/barn on left there is a big pond down in the hollow.
9	7.6	Clayton	42.6752014	-91.4853973	Continue east. Just past Dogwood Ave. on left is a grassed water running down in a wooded hollow.
10	8.9	Clayton	42.6739998	-91.4589005	Continue east. Shortly after passing intersection with Crystal Ave., at the bottom of the hill is a tree-lined rocky stream on right hand side of road.