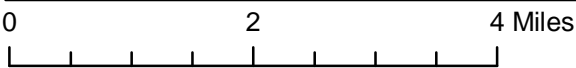
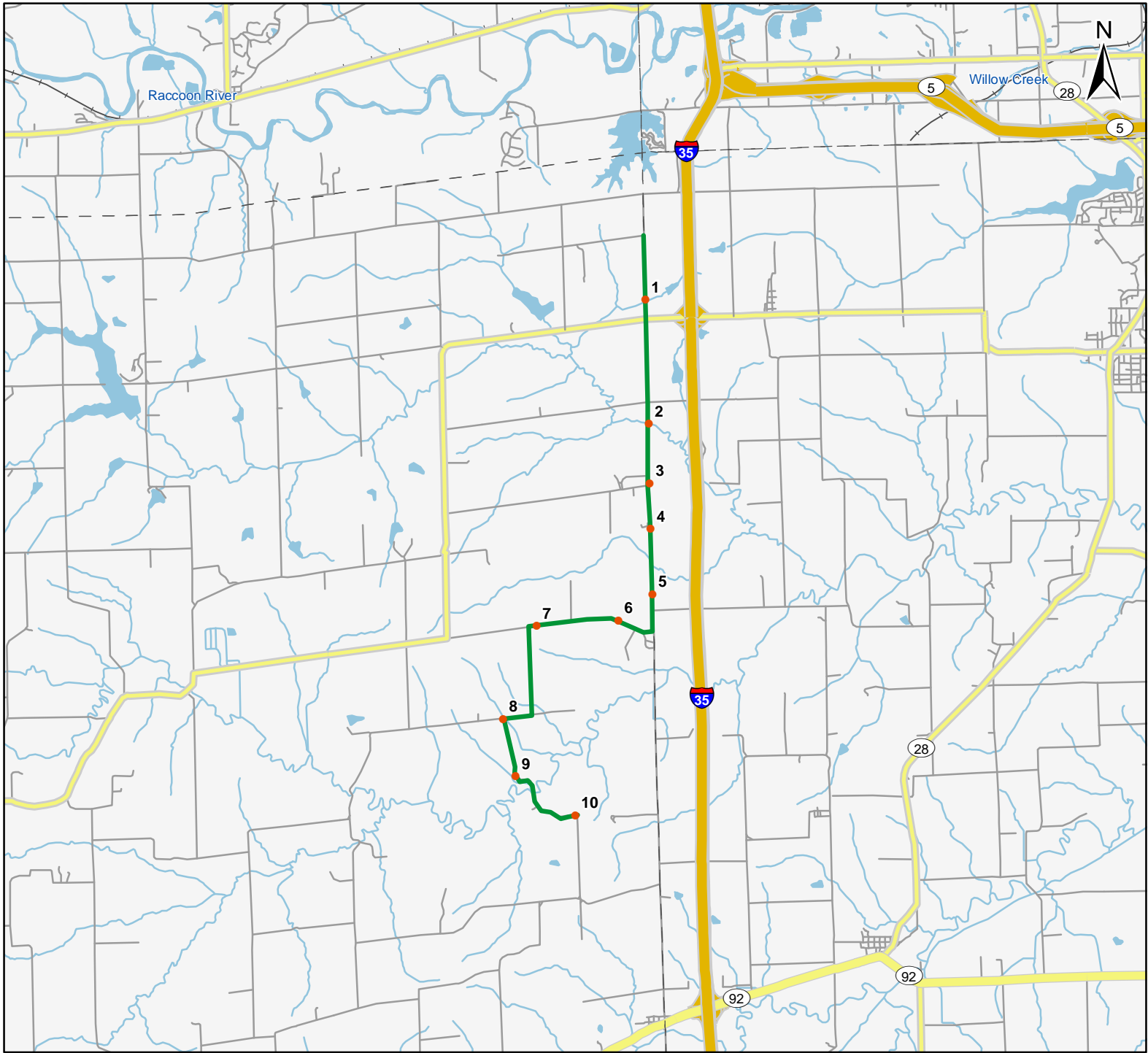


North American Amphibian Monitoring Program

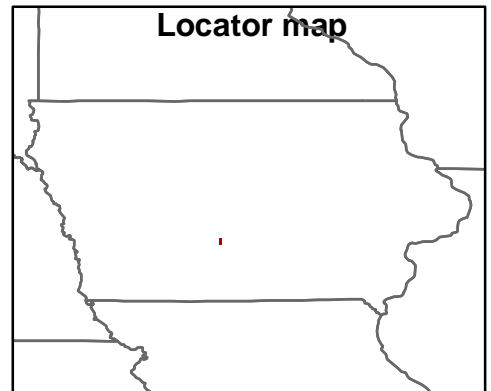


Route: 360417 Cumming, IA



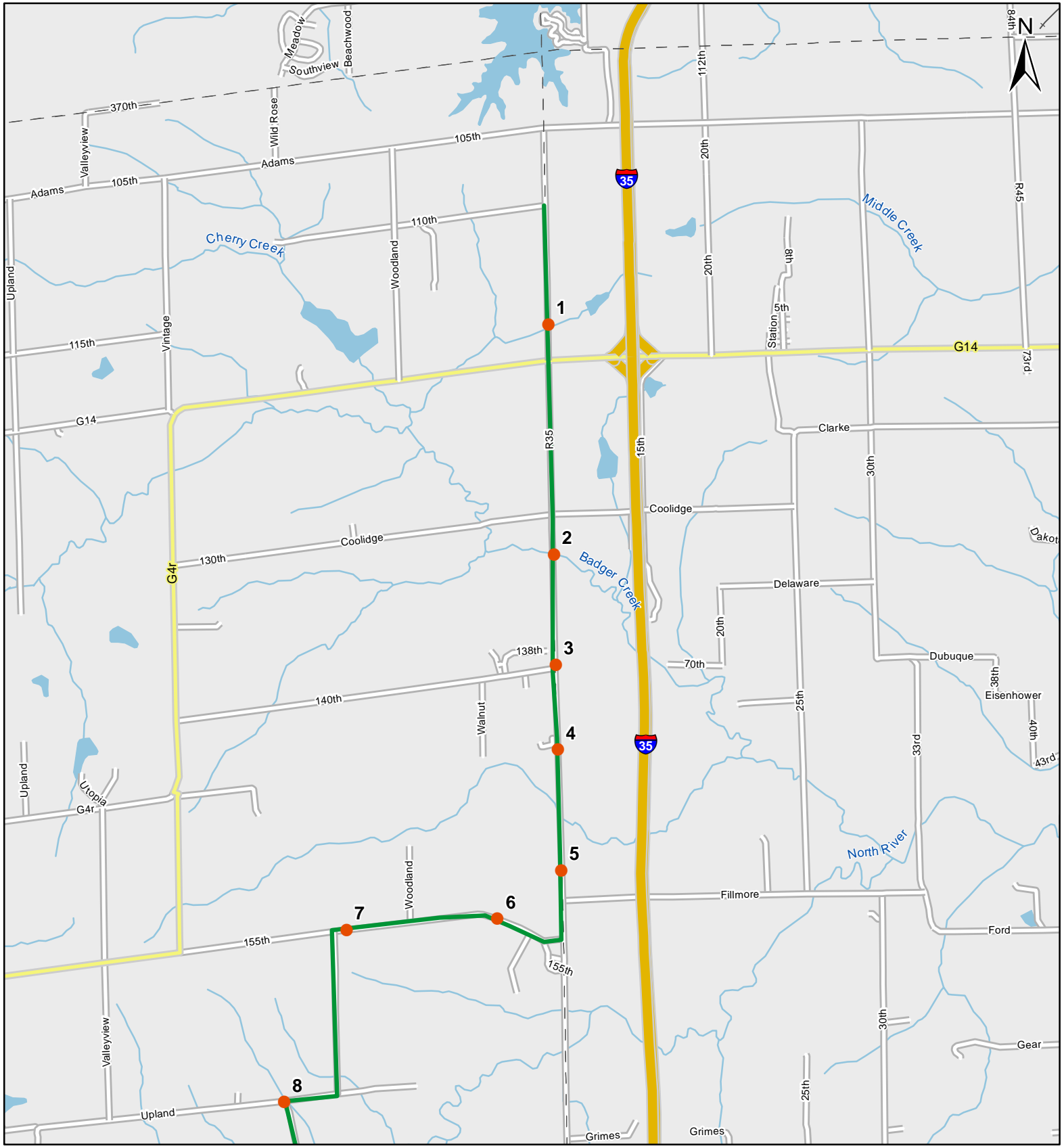
Legend

- Stop Locations
- Route Path



For more information, please visit the NAAMP website:
<http://www.pwrc.usgs.gov/naamp/>

Route: 360417 Cumming, IA



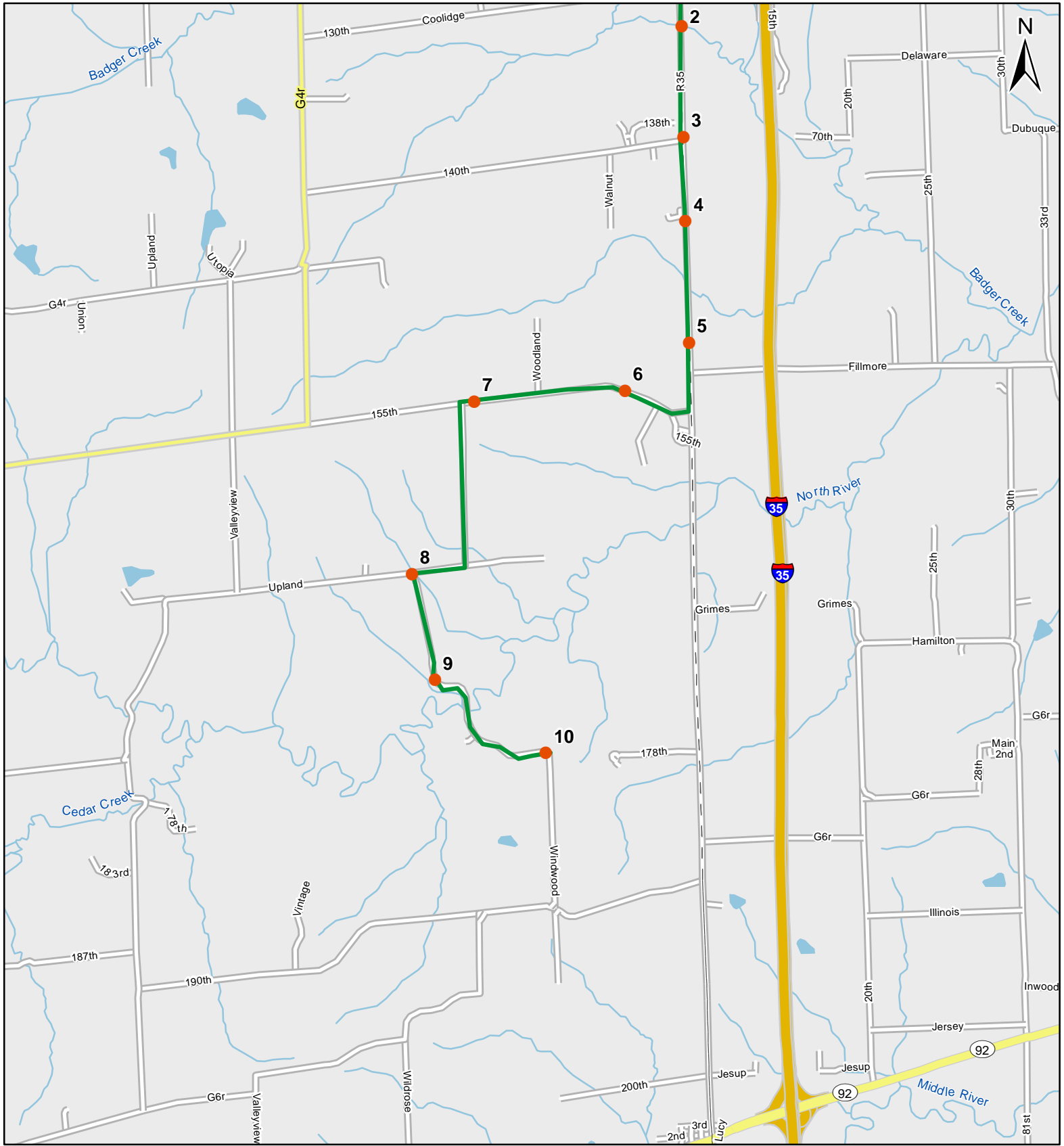
0 1 Miles

1:50,000

Legend

- Stop Locations
- Route Path

Route: 360417 Cumming, IA



1:50,000

Legend

- Stop Locations
- Route Path



Frog and Toad Call Survey Route Description

Route ID **360417**

Established:

Site Number	Name	County	Latitude	Longitude	Directions
1	0.7	Warren	41.4863014	-93.7904968	From start point travel south on R35 (warren ave) for .7 miles stop is little creek that runs under road.
2	2.2	Warren	41.4648018	-93.7906036	Continue south on R35 for 7.5 miles until you travel over a small bridge. Stop is creek and flooded areas/ponds in field on left (east) side of road.
3	2.9	Warren	41.4543991	-93.7907028	Continue south for .7 miles to the intersection of 140th street and R35. Area is flooded creek like woods to left (east) of road.
4	3.4	Warren	41.4464989	-93.7907028	South on R35 for .5 miles. Stop is two small farm ponds directly next to road on right (west) side of road.
5	4.1	Warren	41.4351006	-93.7906036	South on R35 for .7 miles. Large farm pond to right (west) side of road.
6	4.9	Madison	41.4308014	-93.7987976	.4 miles south to 155th st. Turn right and travel west for .4 miles. Small farm pond to right (north) of road in a stand of trees or can use another pond to left of road about .2 miles west.
7	5.8	Madison	41.4300995	-93.8175964	Travel west on 155th st for .9 miles almost to the upland trail/155th corner. Farm pond to right (north) of road.
8	7.2	Madison	41.4141006	-93.8258972	Follow upland trail to Windwood Trl. At that corner stop. There is a small creek that runs under road.



Frog and Toad Call Survey Route Description

9	7.9	Madison	41.4040985	-93.8233032	Follow windwood trail for about .7-.9 miles. There are numerous flooded pools in the trees to the right of road.
10	8.9	Madison	41.3969994	-93.8097992	Continue on windwood trl for 1.0 miles. There is a nice farm pond downhill about 100 meters to left of road.