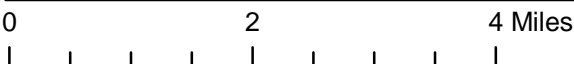
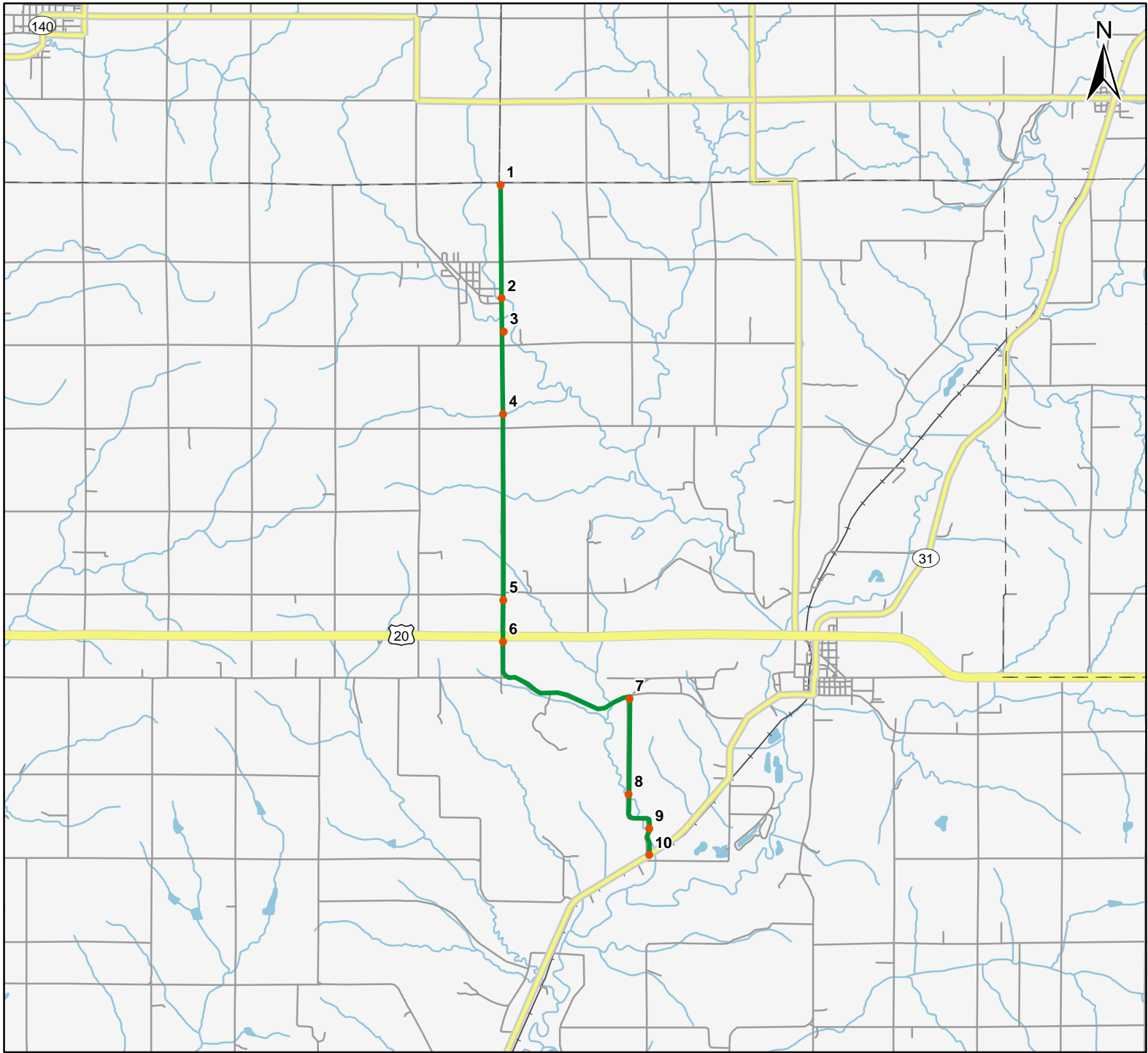


# North American Amphibian Monitoring Program

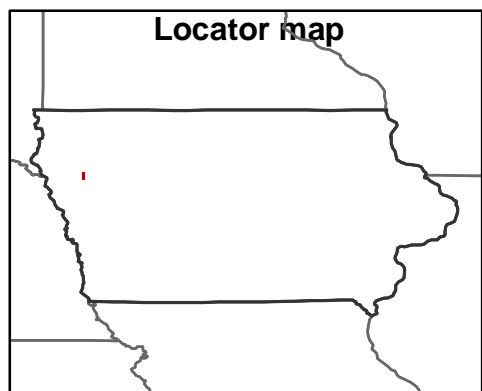


Route: 360208 Fielding, IA



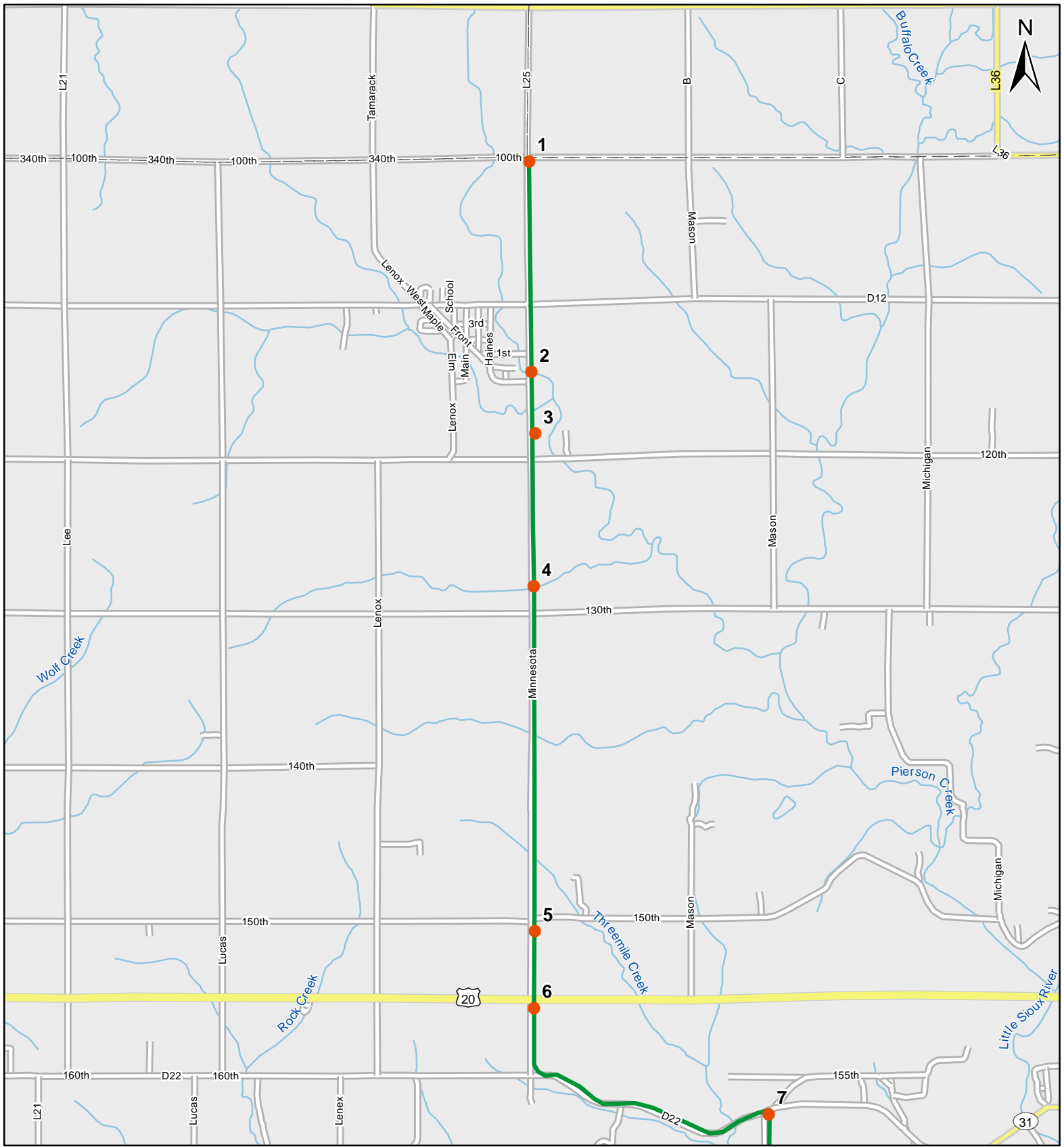
**Legend**

- Stop Locations
- Route Path



For more information, please visit the NAAMP website:  
<http://www.pwrc.usgs.gov/naamp/>

# Route: 360208 Fielding, IA

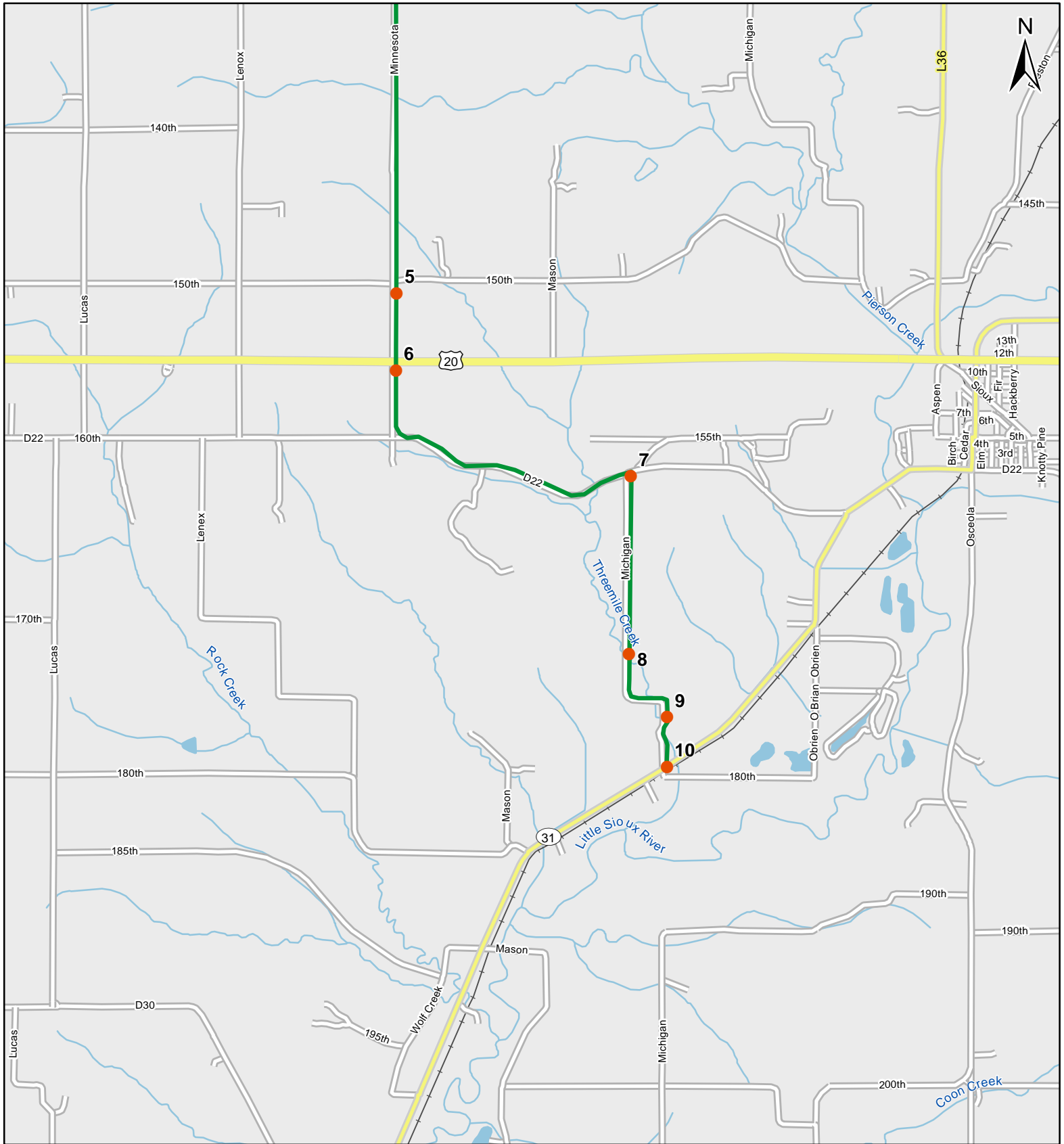


1:50,000

**Legend**

- Stop Locations
- Route Path

# Route: 360208 Fielding, IA



0 1 Miles

1:50,000

**Legend**

- Stop Locations
- Route Path



# Frog and Toad Call Survey Route Description

Route ID **360208**

Established:

Site Number	Name	County	Latitude	Longitude	Directions
1	7	Cherokee	42.5606003	-95.8599014	340th and L25 intersection. Small stream and impoundment on west side, marshy habitat on east side
2	8.5	Woodbury	42.5409012	-95.8597031	Bridge in Pierson city limits. Small stream, marshy habitat on east side, wooded habitat on west side
3	9.5	Woodbury	42.535099	-95.8591995	Small creek near sanitation ponds on east side of road.
4	10.5	Woodbury	42.5208015	-95.8593979	Small creek with wooded habitat on east side of road, marshy habitat on west side.
5	11.5	Woodbury	42.4884987	-95.8593979	Small wooded creek, pond to the west of road.
6	12	Woodbury	42.4813004	-95.8594971	small creek with wooded habitat on both sides of road near hwy 20 and L25 intersection.
7	13	Woodbury	42.4712982	-95.8298035	Small creek at intersection of L25 and Michigan Ave. Pond east of road. Shrub habitat in pasture.
8	14	Woodbury	42.4547005	-95.8300018	Three mile creek. Small stream with wooded habitat.
9	14.5	Woodbury	42.4487	-95.8253021	Three mile creek. Small wooded creek. pasture and crop nearby.
10	15	Woodbury	42.4440994	-95.8253021	End of Michigan Ave. and Hwy 31. Numerous small ponds or wetlands in Little Sioux River floodplain. Old gravel quarry sites.