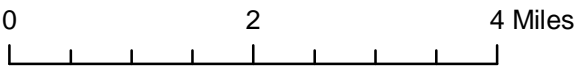
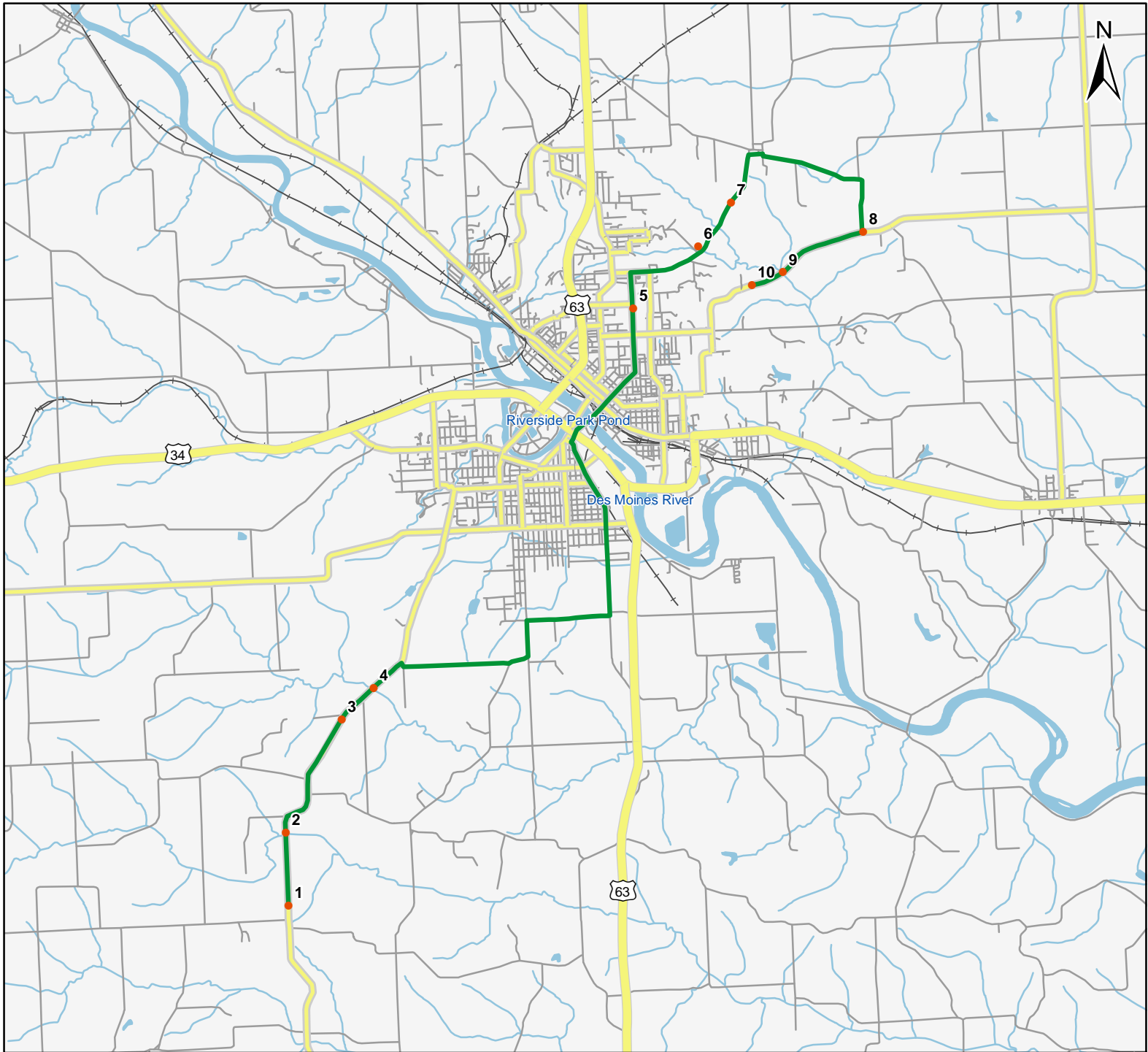


# North American Amphibian Monitoring Program

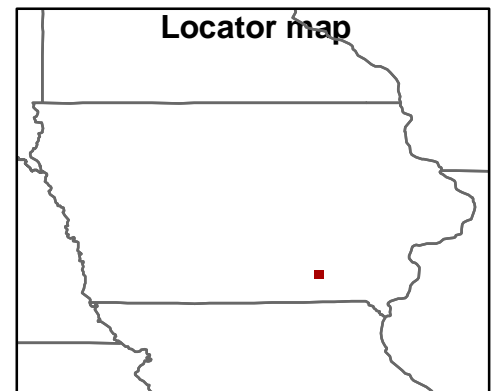


Route: 360124 Ormanville, IA



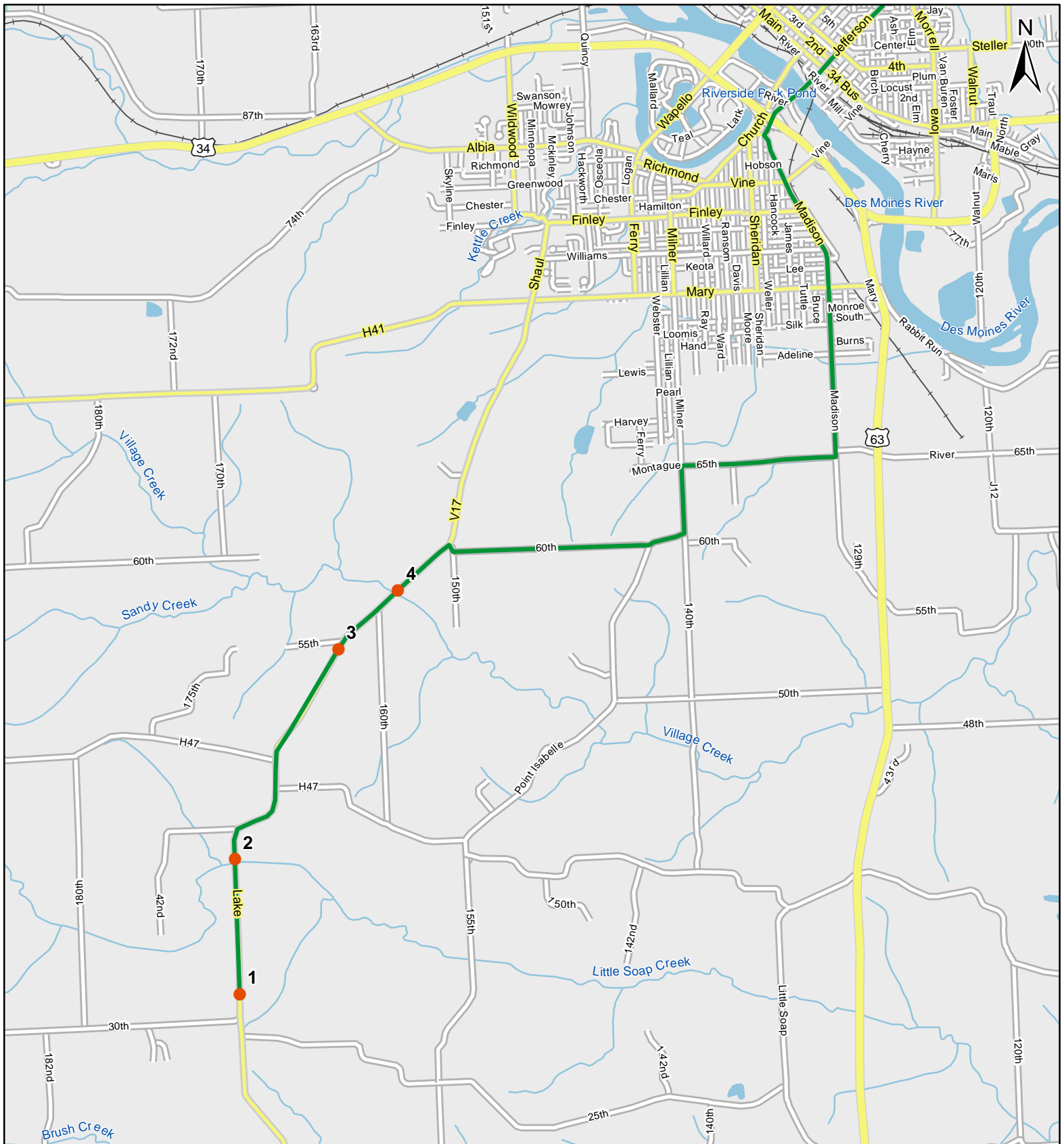
**Legend**

- Stop Locations
- Route Path



For more information, please visit the NAAMP website:  
<http://www.pwrc.usgs.gov/naamp/>

# Route: 360124 Ormanville, IA

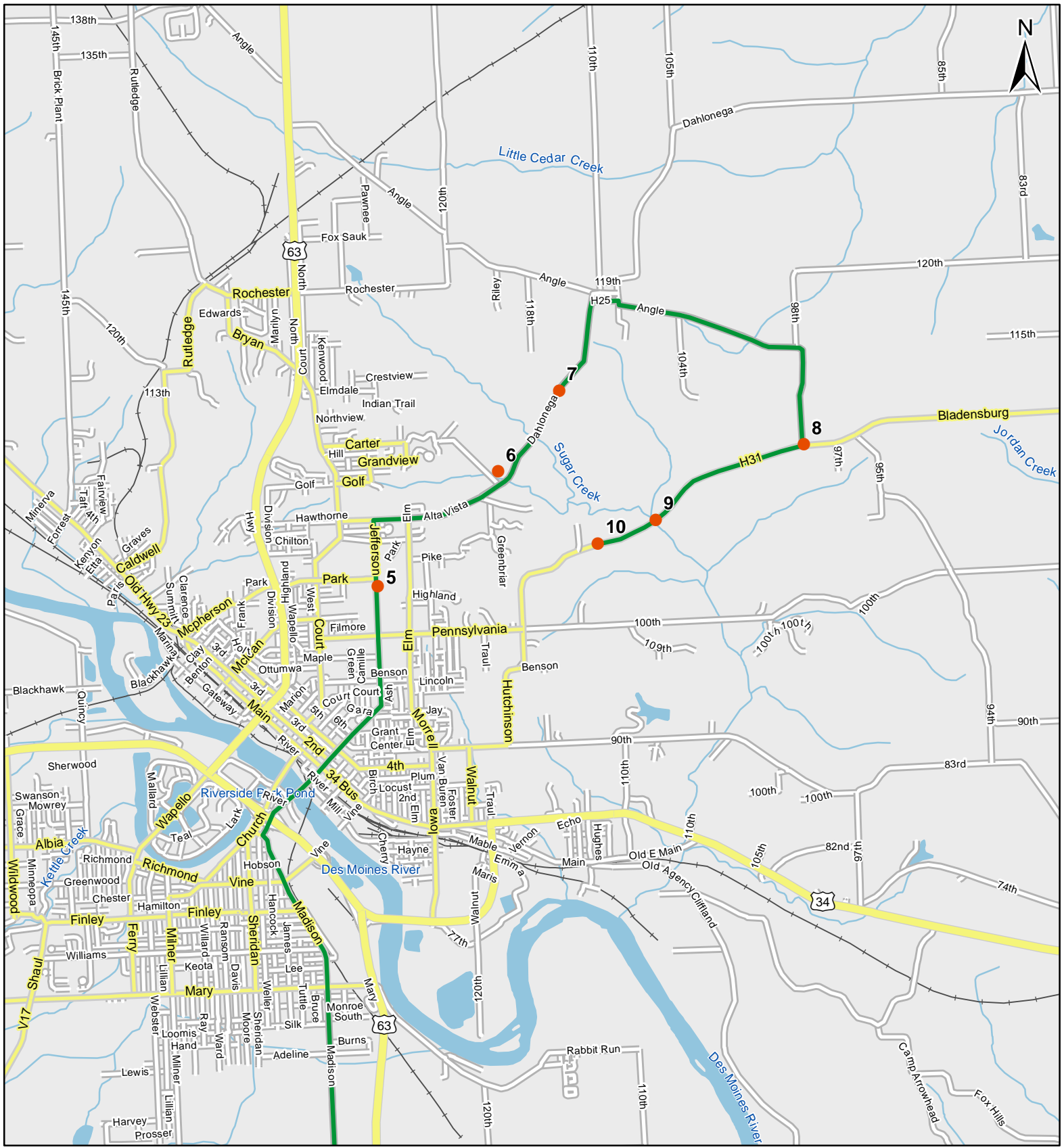


1:50,000

### Legend

- Stop Locations
- Route Path

# Route: 360124 Ormanville, IA



0 1 Miles

1:50,000

**Legend**

- Stop Locations
- Route Path



# Frog and Toad Call Survey Route Description

Route ID **360124**

Established:

Site Number	Name	County	Latitude	Longitude	Directions
1	1	Wapello	40.9309006	-92.4860001	From start, head east on 30th st and take a left on Lake Rd. Go .1 miles north on Lake Rd to a small pond on the left (west)
2	1.8	Wapello	40.9435005	-92.4859009	Continue north on route (Lake Rd) .8 miles to bridge over a creek drainage
3	3.4	Wapello	40.9627991	-92.4720993	Continue north on Lake Rd 1.6 miles to a pond on the right of the road by all address # 5404
4	3.9	Wapello	40.9679985	-92.4645004	Continue north on Lake Rd 0.5 miles to the bridge
5	11.5	Wapello	41.0321007	-92.4013977	Continue on route North to 60th, go right and merge on Point Isabelle, then north on 140th, then left on 65th. Go north on madison all the way to Jefferson. Cross river on Jeffereson and stop at memorial park off to the right of Jefferson. Pond.
6	12.9	Wapello	41.0424004	-92.3860016	Continue on Jefferson and go right when it intersects with Alta Vista. Stop at the drainage by the Indian hills CC sign.
7	13.6	Wapello	41.0498009	-92.3779984	Continue on Alta vista 0.7 miles to pond on left, with "no hunting" sign.
8	16.1	Wapello	41.0438004	-92.3479996	Continue on route, turn right onto Angle/ Follow around until intersection with Bladensburg road. Pond at intersection.
9	17.2	Wapello	41.0373001	-92.3666992	Go right on Bladensburg road 1.1 miles to drainage.
10	18.7	Wapello	41.0353012	-92.3740005	Continue on Bladensburg road until bridge over Hwy 63. Pond on left.