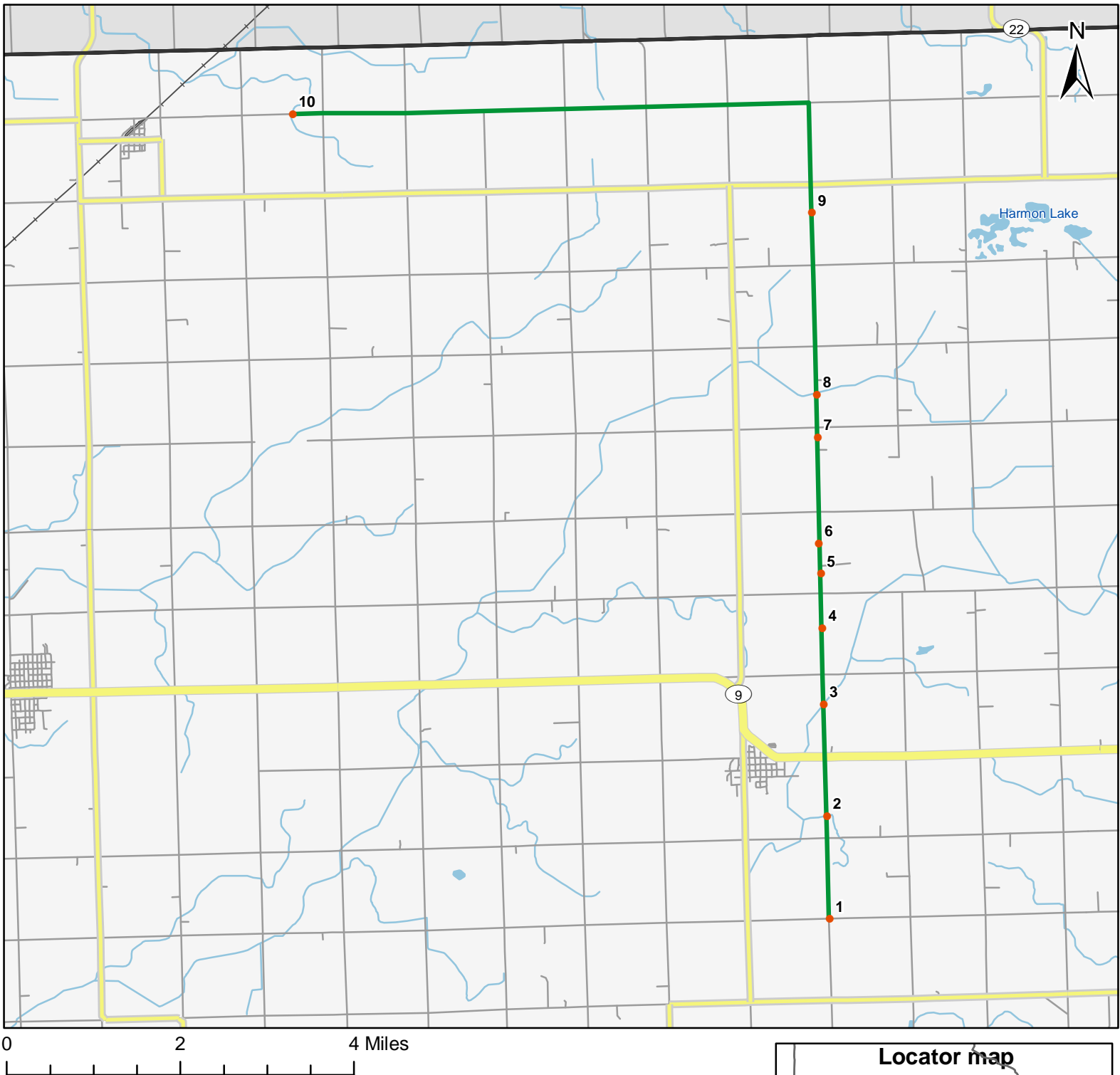


# North American Amphibian Monitoring Program



Route: 360204 Thompson, IA



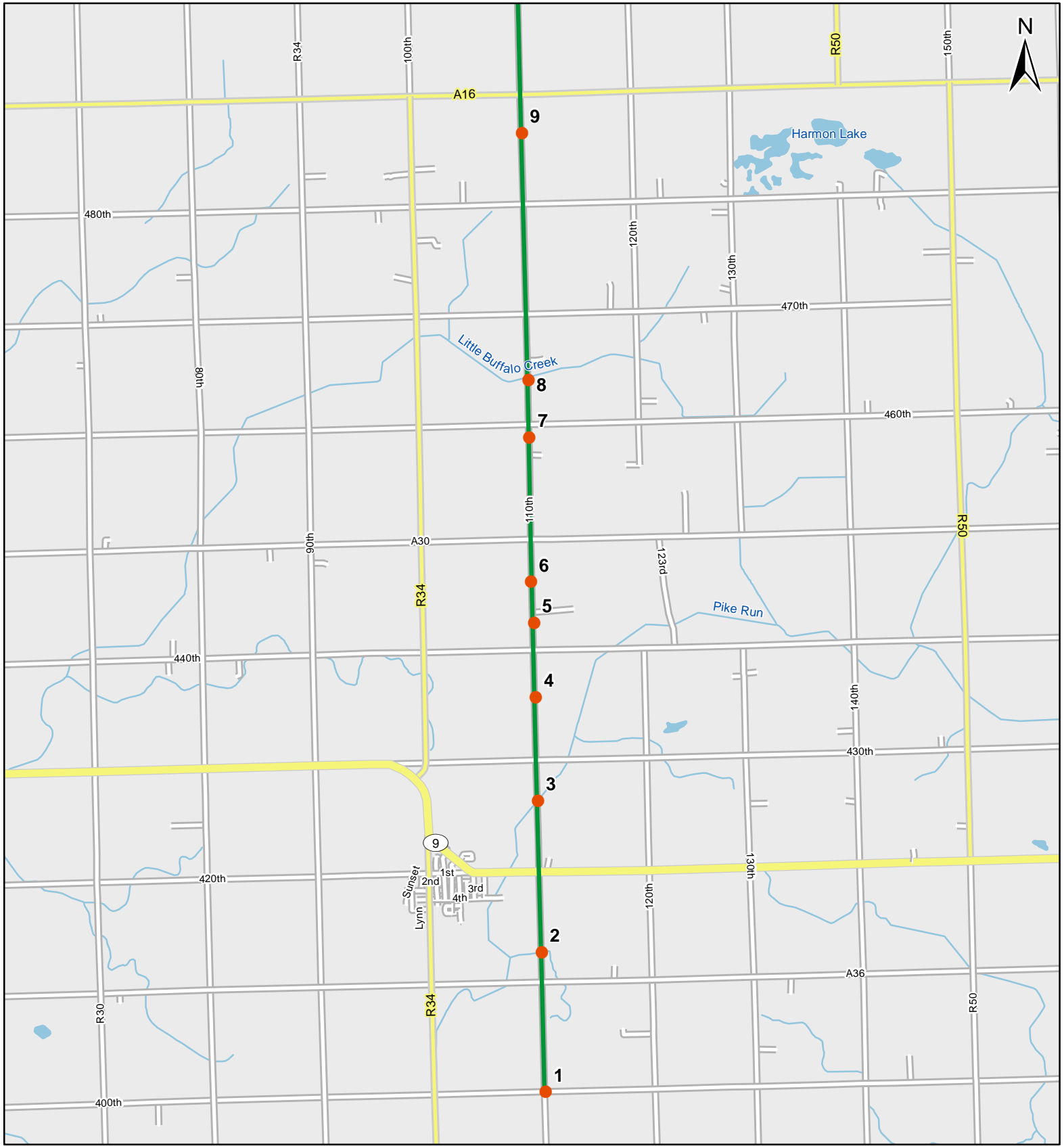
**Legend**

- Stop Locations
- Route Path



For more information, please visit the NAAMP website:  
<http://www.pwrc.usgs.gov/naamp/>

# Route: 360204 Thompson, IA



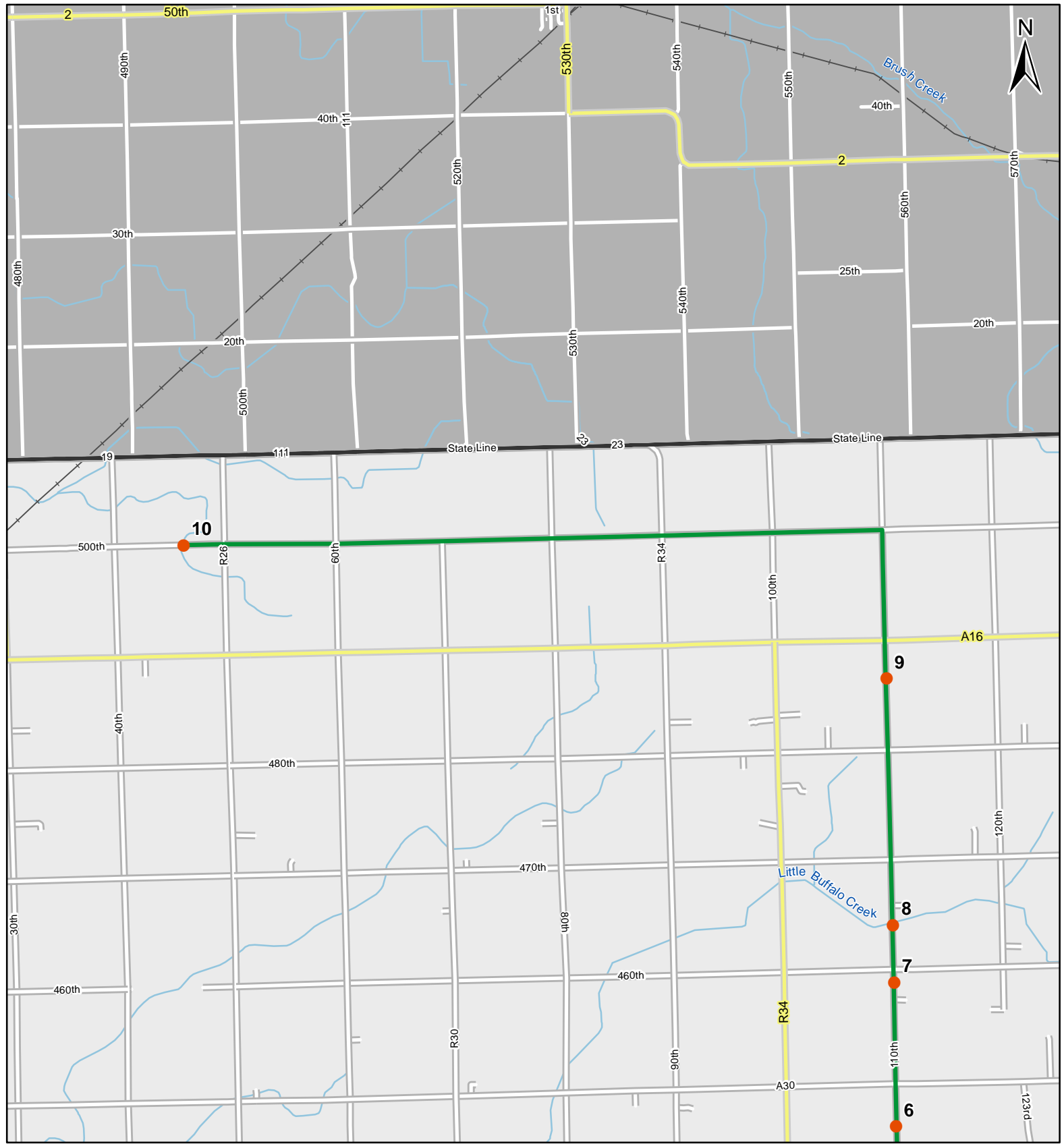
0 1 Miles

1:70,000

**Legend**

- Stop Locations
- Route Path

# Route: 360204 Thompson, IA



0 1 Miles

1:70,000

**Legend**

- Stop Locations
- Route Path



# Frog and Toad Call Survey Route Description

Route ID **360204**

Established:

Site Number	Name	County	Latitude	Longitude	Directions
1	0	Winnebago	43.3423004	-93.7538986	Grassy ditches at intersection of 110th and 400th
2	1.2	Winnebago	43.3605995	-93.7538986	Go north on 110th. 0.3 miles north 110th and 410th intersection. Grassed waterway on west side of road.
3	2.5	Winnebago	43.3805008	-93.7538986	North on 110th. Cross Hwy 9. Bridge over channelized creek bordered by grass; then crop fields. About 0.5 miles north of hwy 9.
4	3.5	Winnebago	43.3941002	-93.7537994	North on 110th. Cross 430th. 2 farm ponds on west side of 110th about 0.5 miles north of 430th. Wood duck boxes surrounded by grassy buffer between crop fields.
5	4.1	Winnebago	43.403801	-93.7537994	North on 110th. Warm season grass planting on east side of road with what looks like a willow surrounded wet spot in middle. About 0.1 mile north of 440th. Blue house on west side of road.
6	4.5	Winnebago	43.4091988	-93.754097	Go north on 110th. DNR-good neighbor marsh. West side of road, pull off, grass parking area.
7	5.8	Winnebago	43.4281006	-93.7537994	Go north on 110th. Cross 450th. DNR ground, at corner of 110th and 460th. Low area on east side of 110th. Dry now but willows and cattails present.
8	6.3	Winnebago	43.4356003	-93.7537003	North on 110th. Cross 460th. Bridge about 0.3 miles north of 360th. Small waterway both sides of road running through culvert. Channelized.



## Frog and Toad Call Survey Route Description

9	8.5	Winnebago	43.4679985	-93.7537003	North on 110th. Cross 470th and 480th. Largish pond on east side of 110th in a warm season grass planting surrounded by willows
10	16.1	Winnebago	43.4878998	-93.8798981	North on 110th, cross 490th, turn left on 500th, cross 100th. Bridge over grassed waterway halfway between 50th and 40th st