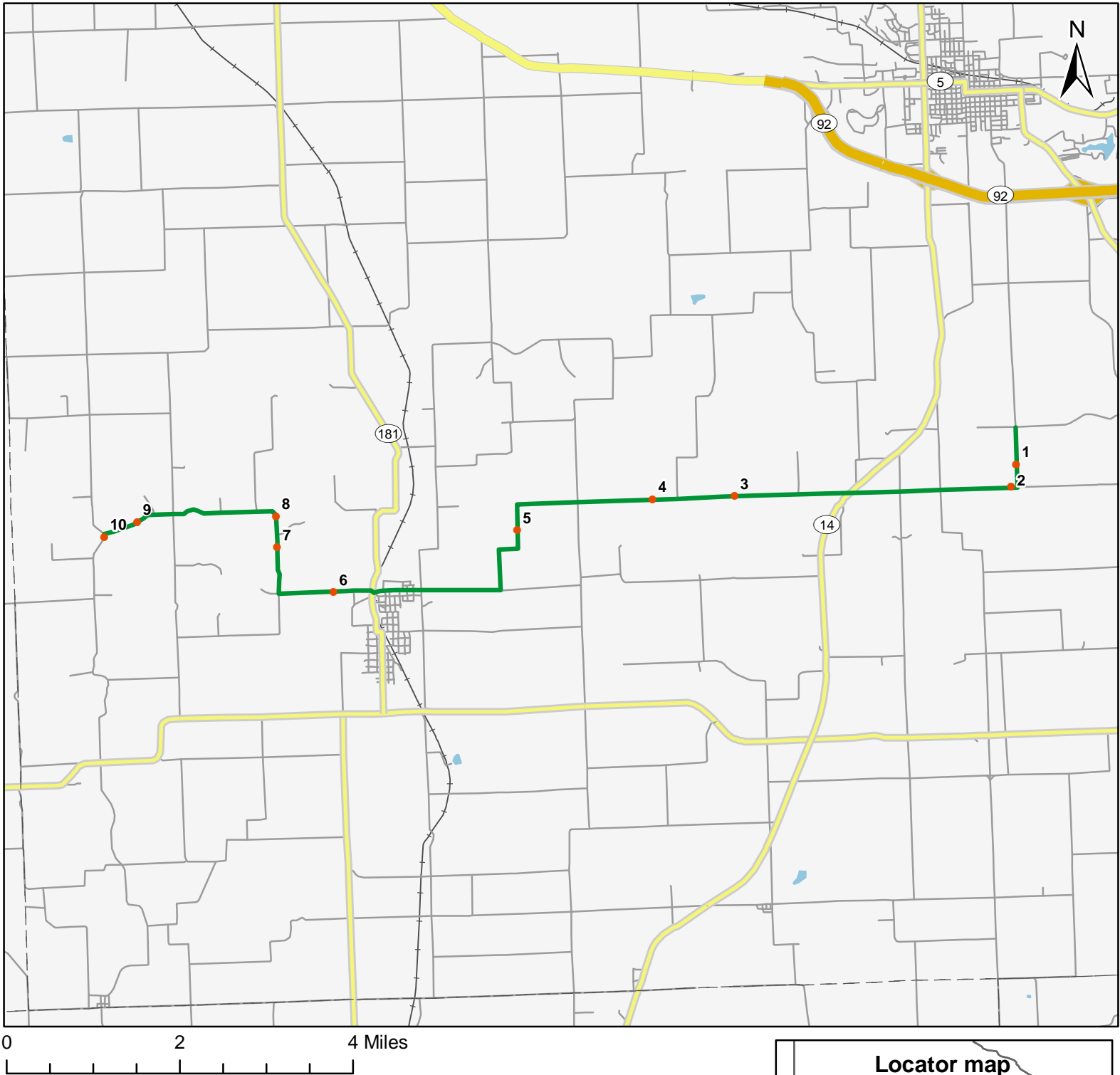


North American Amphibian Monitoring Program

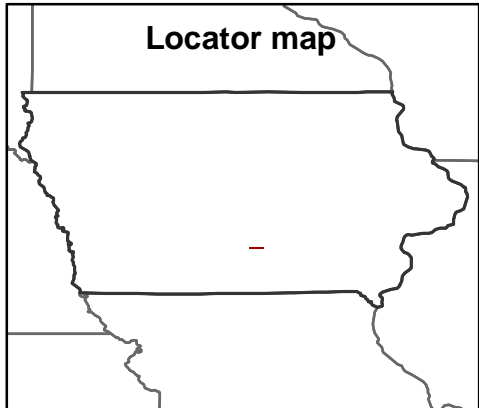


Route: 360217 Fairmont, IA



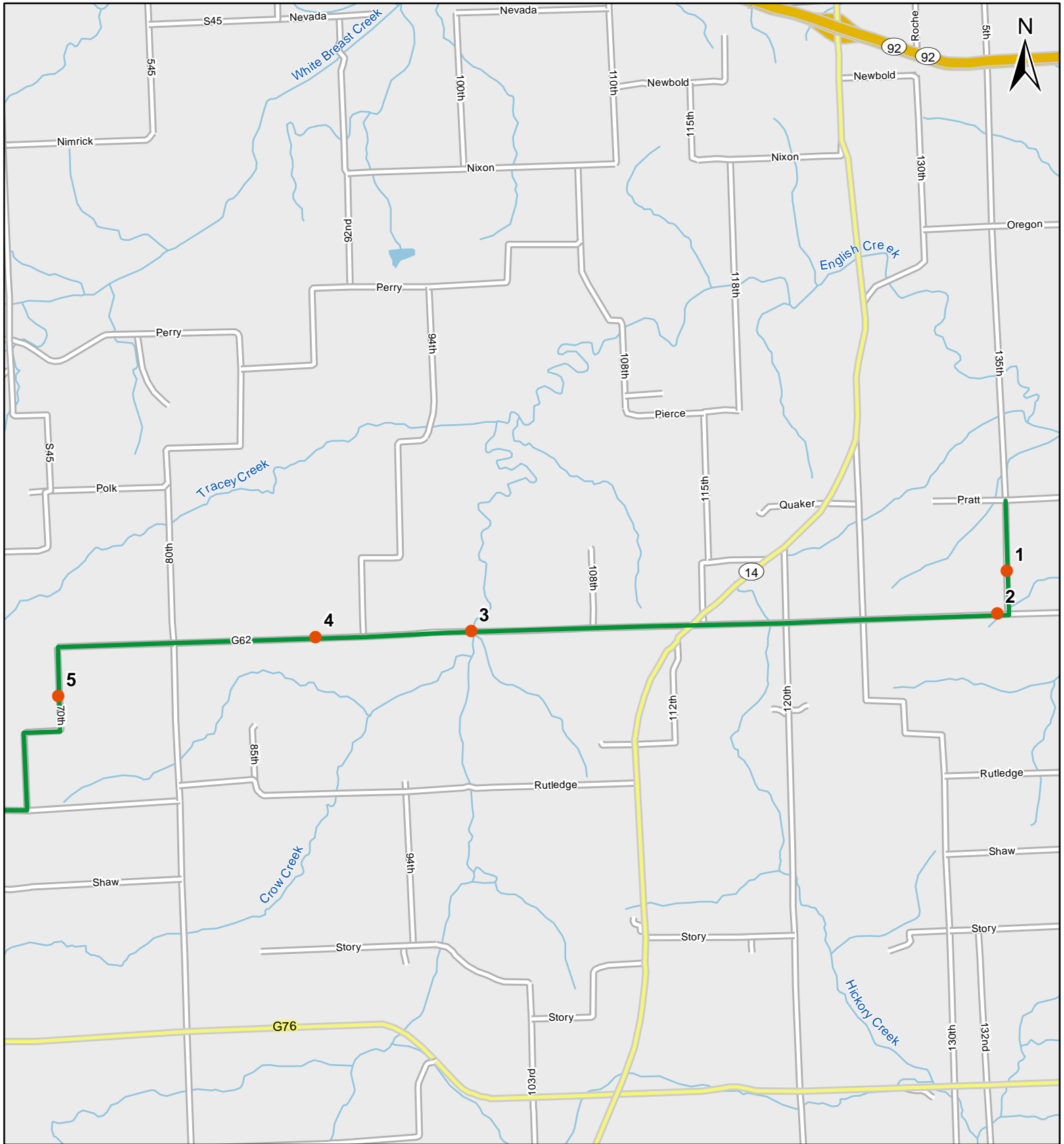
Legend

- Stop Locations
- Route Path



For more information, please visit the NAAMP website:
<http://www.pwrc.usgs.gov/naamp/>

Route: 360217 Fairmont, IA



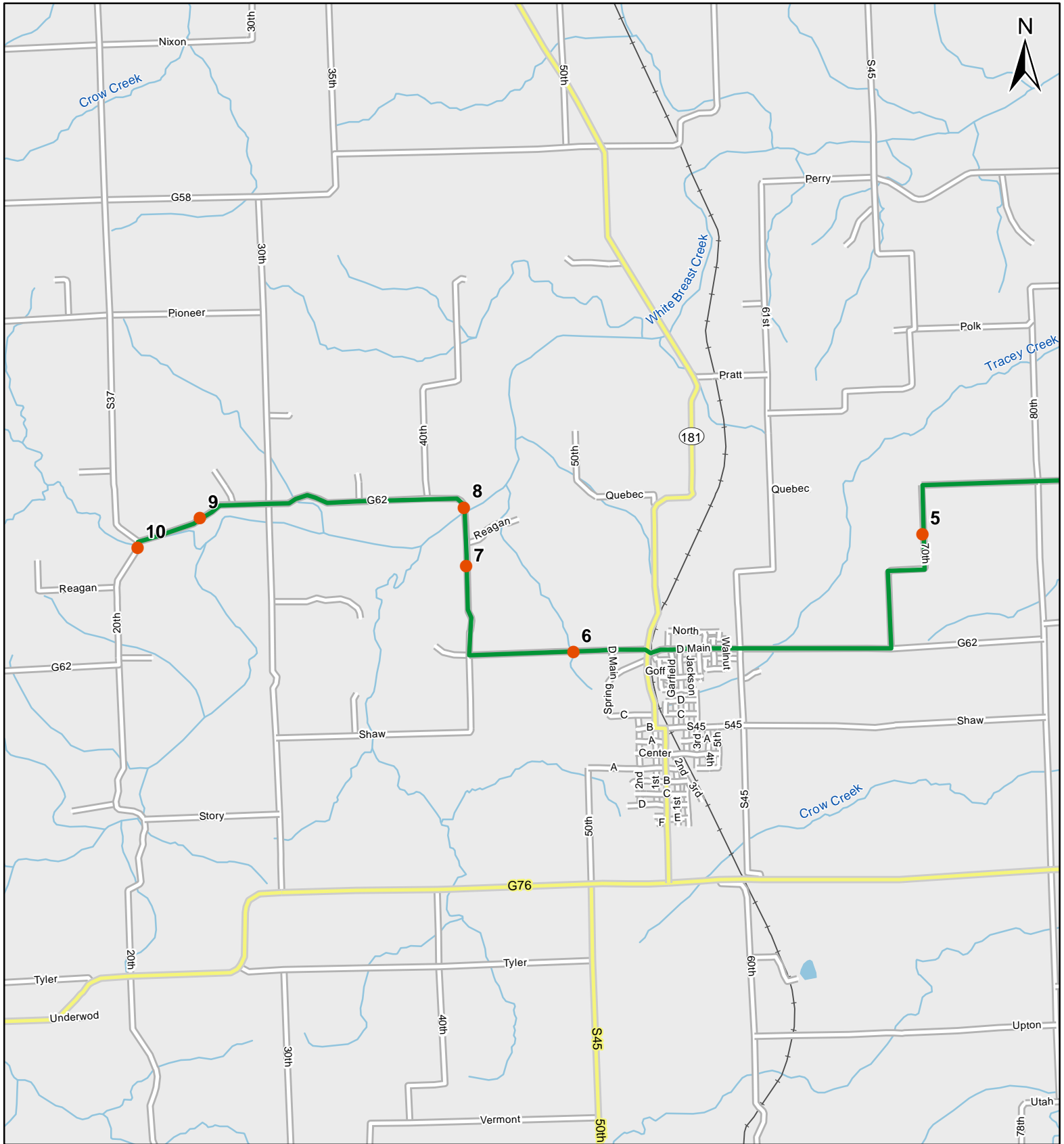
0 1 Miles

1:50,000

Legend

- Stop Locations
- Route Path

Route: 360217 Fairmont, IA



1:50,000

Legend

- Stop Locations
- Route Path



Frog and Toad Call Survey Route Description

Route ID **360217**

Established:

Site Number	Name	County	Latitude	Longitude	Directions
1	0.4	Marion	41.2523003	-93.0908966	South on 135th. Drive for .4 miles. Small farm pond to right (west) of road.
2	0.7	Marion	41.2482986	-93.0922012	Turn right on Quebec street (CR G62) and travel to small farm pond on right (north) side of road.
3	4	Marion	41.2482986	-93.1576004	Continue west on Quebec street for 1.9 miles to bridge. Stop right before bridge.
4	5	Marion	41.2481995	-93.1769028	Continue west on Quebec street for 1.2 miles. Farm pond about 150 meters off road to left (south) side of road.
5	6.6	Marion	41.2434998	-93.2090988	Follow Quebec west for 1.3 miles to curve then .3 miles south. Farm pond on left (east) side of road.
6	9.5	Marion	41.2335014	-93.2528992	Quebec .9 miles south to Rutledge st. Take a right and follow 2 miles through Dallas. Once you are just west of town stop at bottom of hill at creek.
7	10.7	Marion	41.2417984	-93.2658997	Continue .6 miles on Rutledge then take right on 42nd place. Continue north for .5 miles. Creek runs parallel to road on left (west) side of road.
8	11.2	Marion	41.2472992	-93.2658997	North on 42nd place for almost .5 miles to bridge. Stop right after crossing bridge.
9		Marion	41.2471008	-93.2986984	Large creek runs parallel to Quebec Dr. Travel route for about 1 mile and creek runs parallel to left (south). Try about .5 mile stretch on road.
10		Marion	41.2444992	-93.3066025	South side of bridge on 20th Place, just south of Quebec Dr.