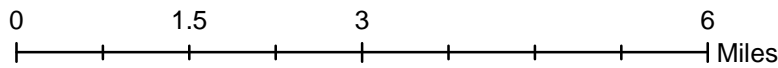
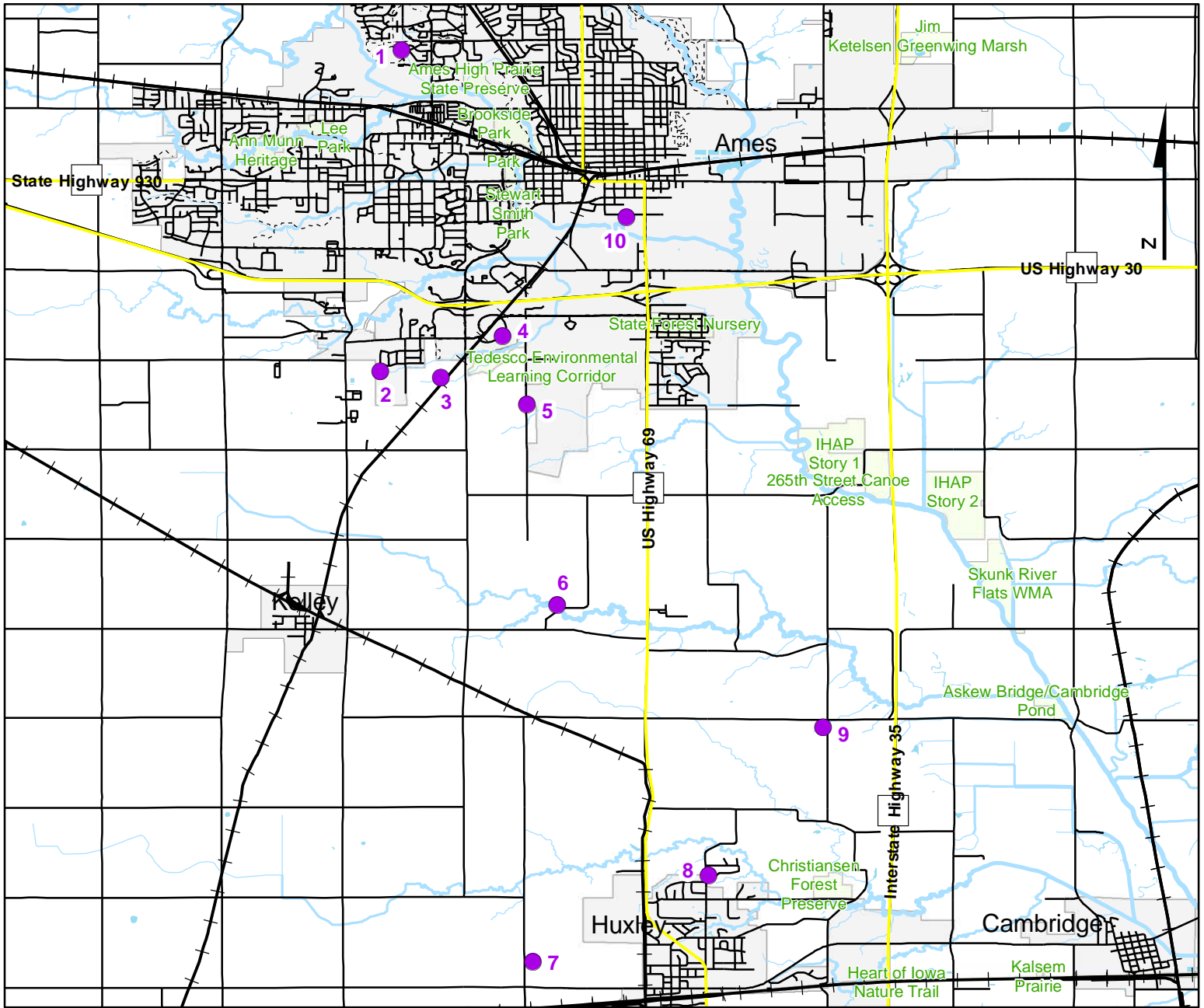


Volunteer Wildlife Monitoring Program (VWMP) Frog and Toad Survey



Route ID: 126 County: Story

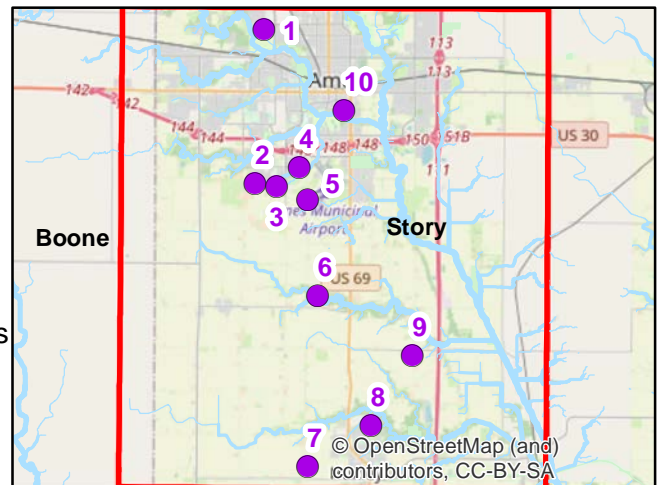


DNR
Volunteer Wildlife Monitoring Program



Legend

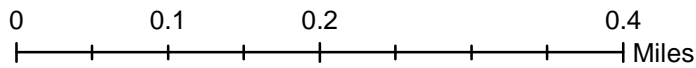
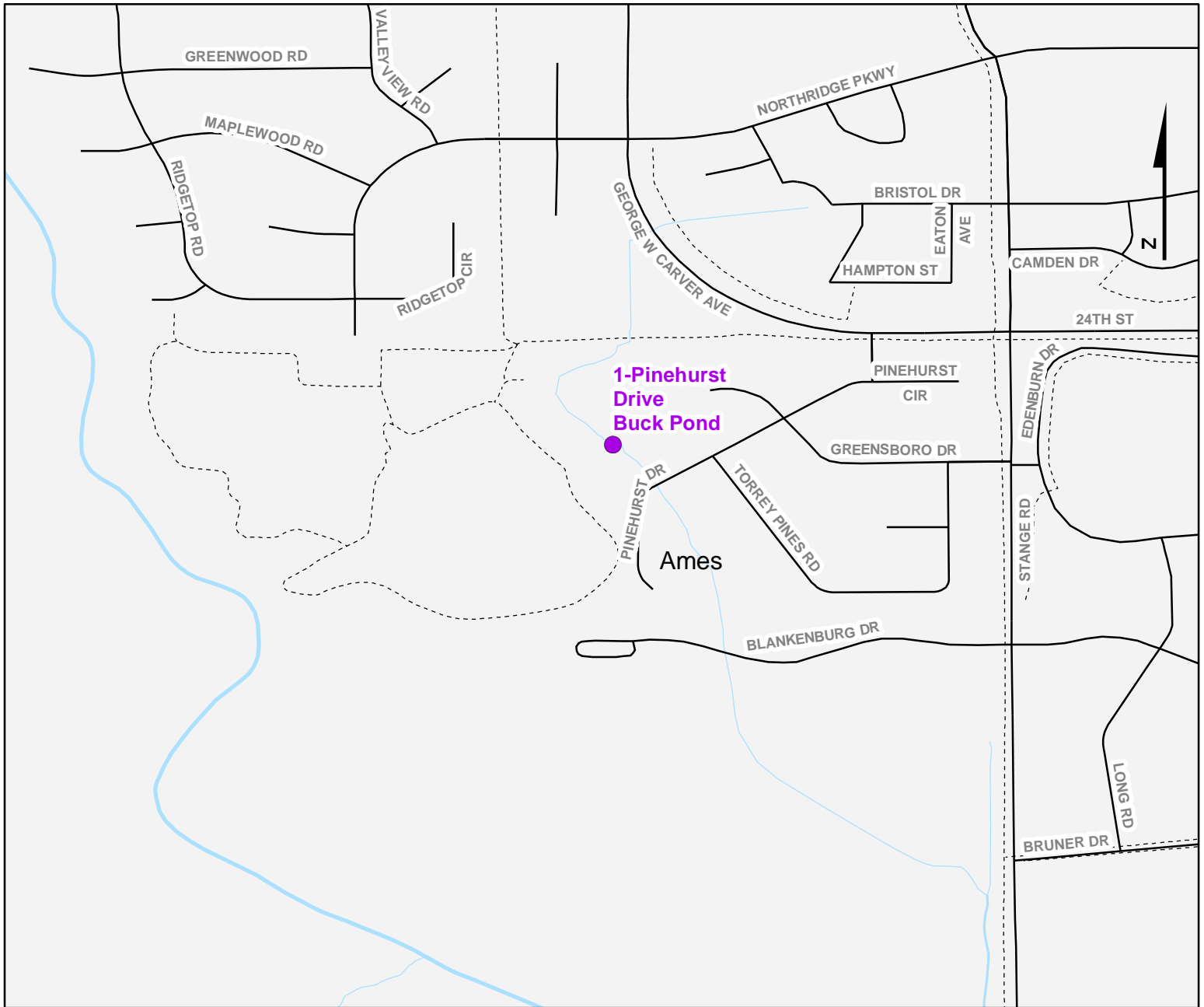
- Trails
- Survey Stops



Volunteer Wildlife Monitoring Program (VWMP) Frog and Toad Survey

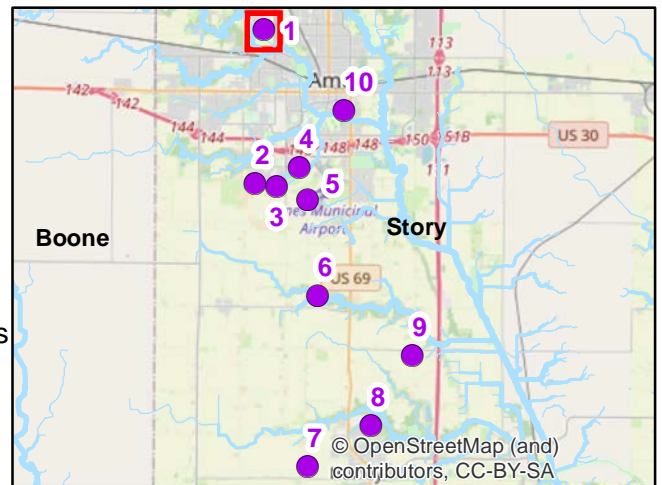


Route ID: 126 County: Story



Legend

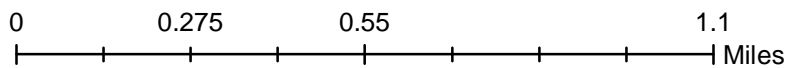
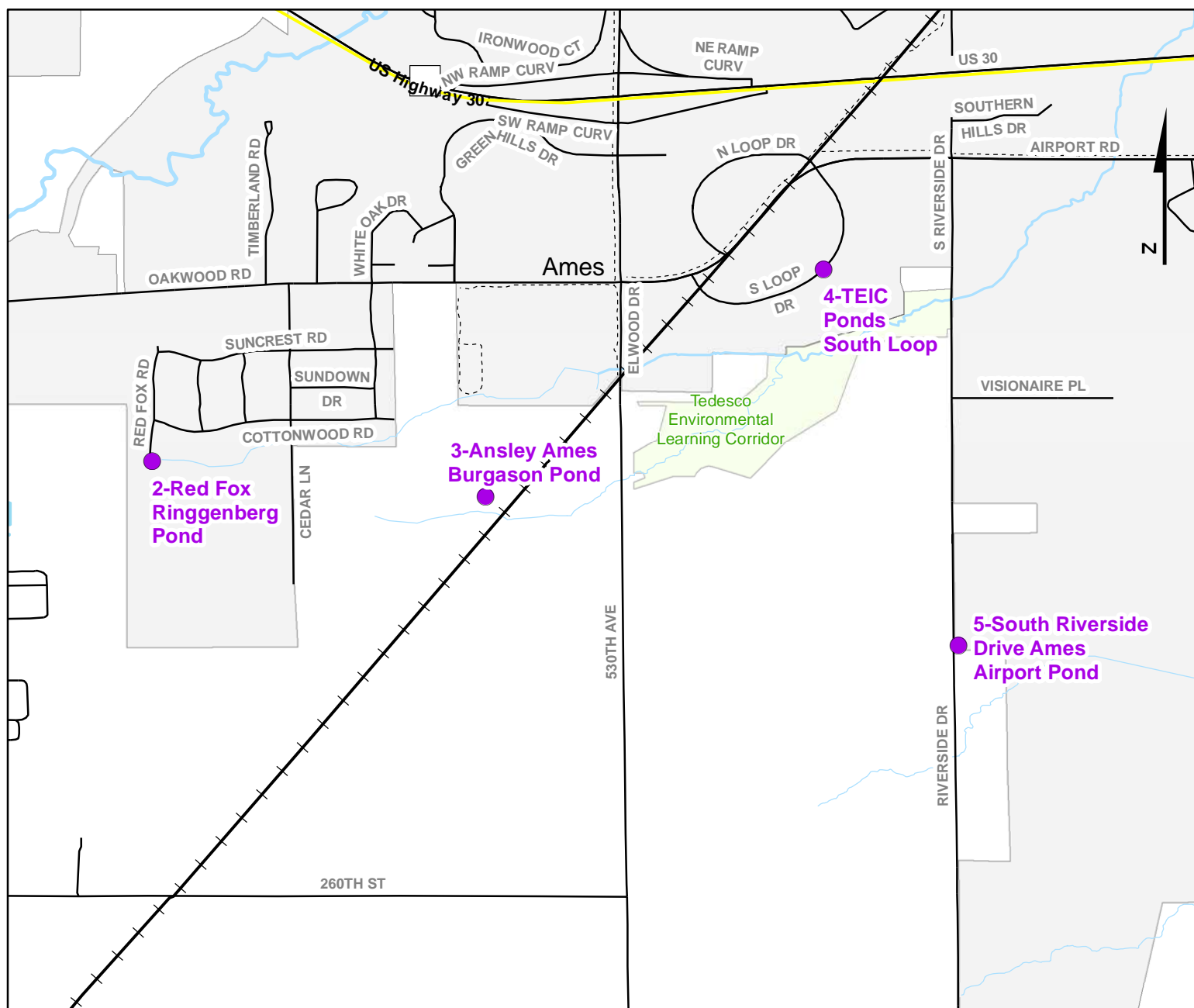
- Trails
- Survey Stops



Volunteer Wildlife Monitoring Program (VWMP) Frog and Toad Survey



Route ID: 126 County: Story

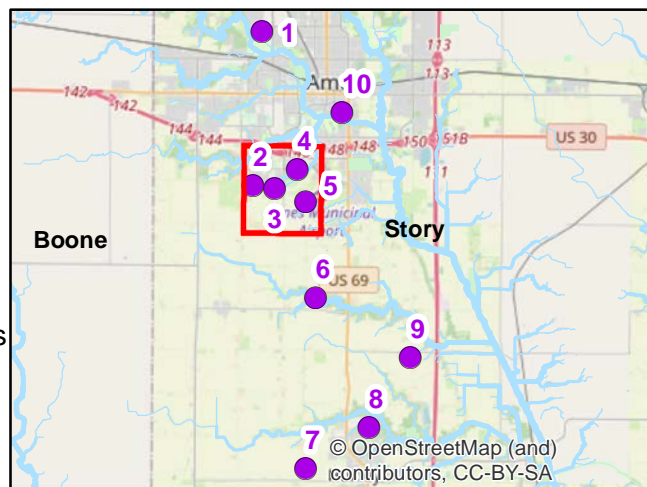


DNR
**Volunteer
 Wildlife
 Monitoring
 Program**



Legend

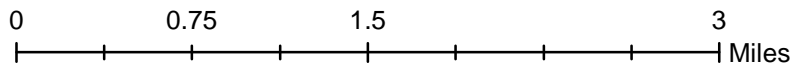
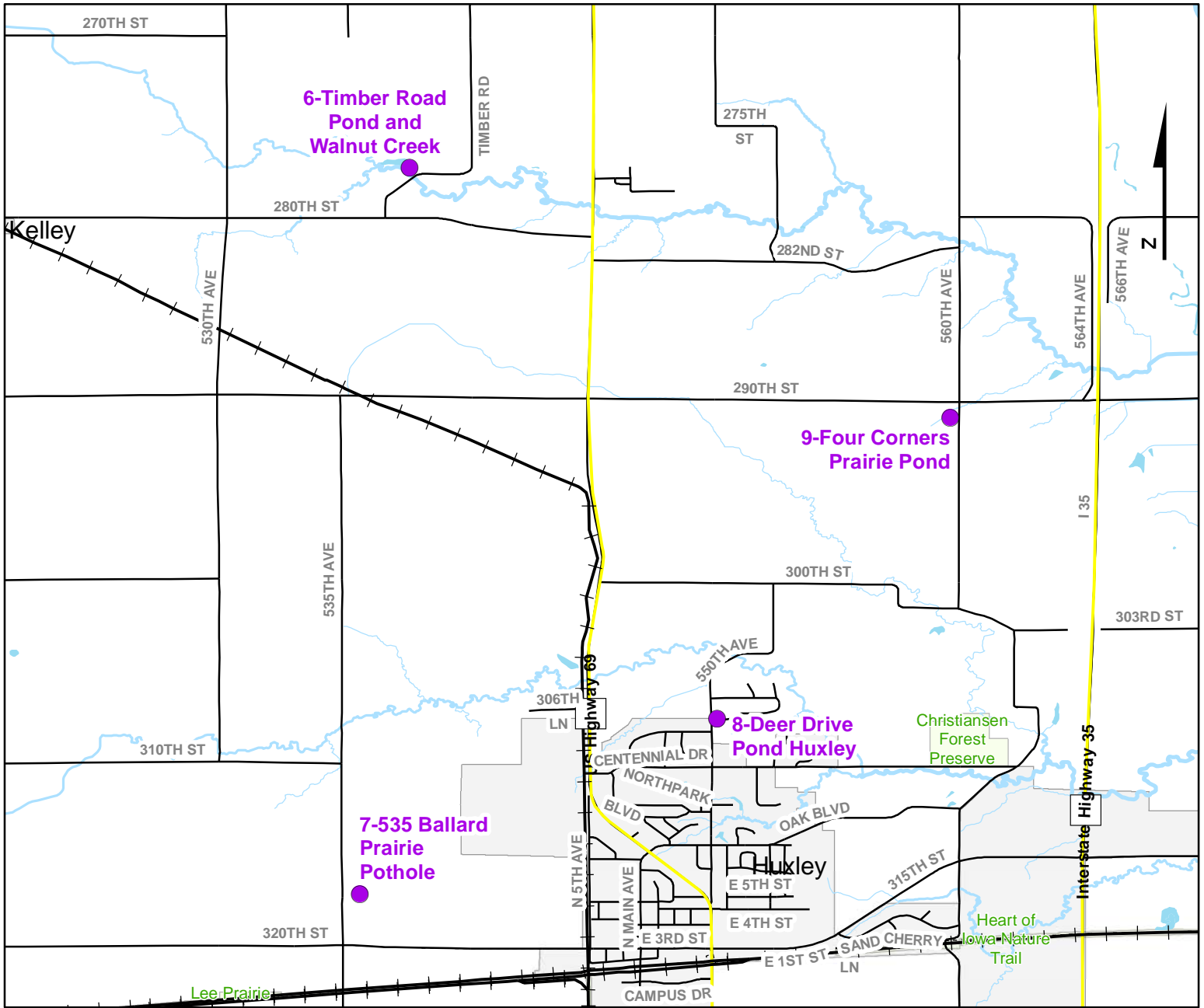
- Trails
- Survey Stops



Volunteer Wildlife Monitoring Program (VWMP) Frog and Toad Survey



Route ID: 126 County: Story

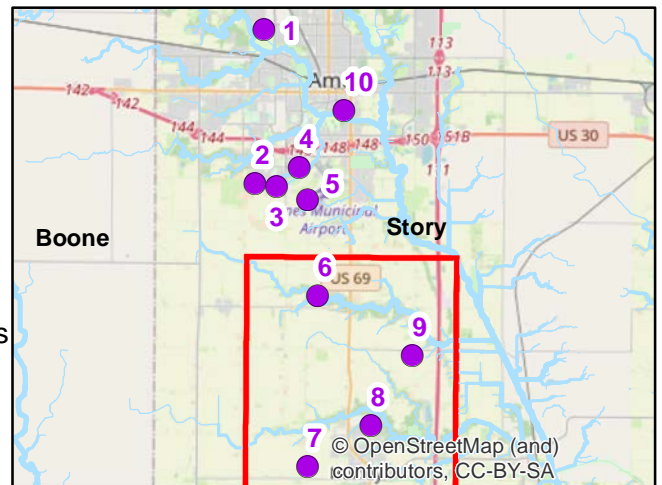


DNR
Volunteer Wildlife Monitoring Program



Legend

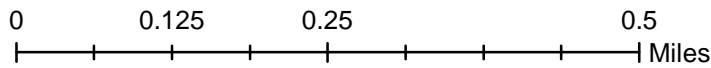
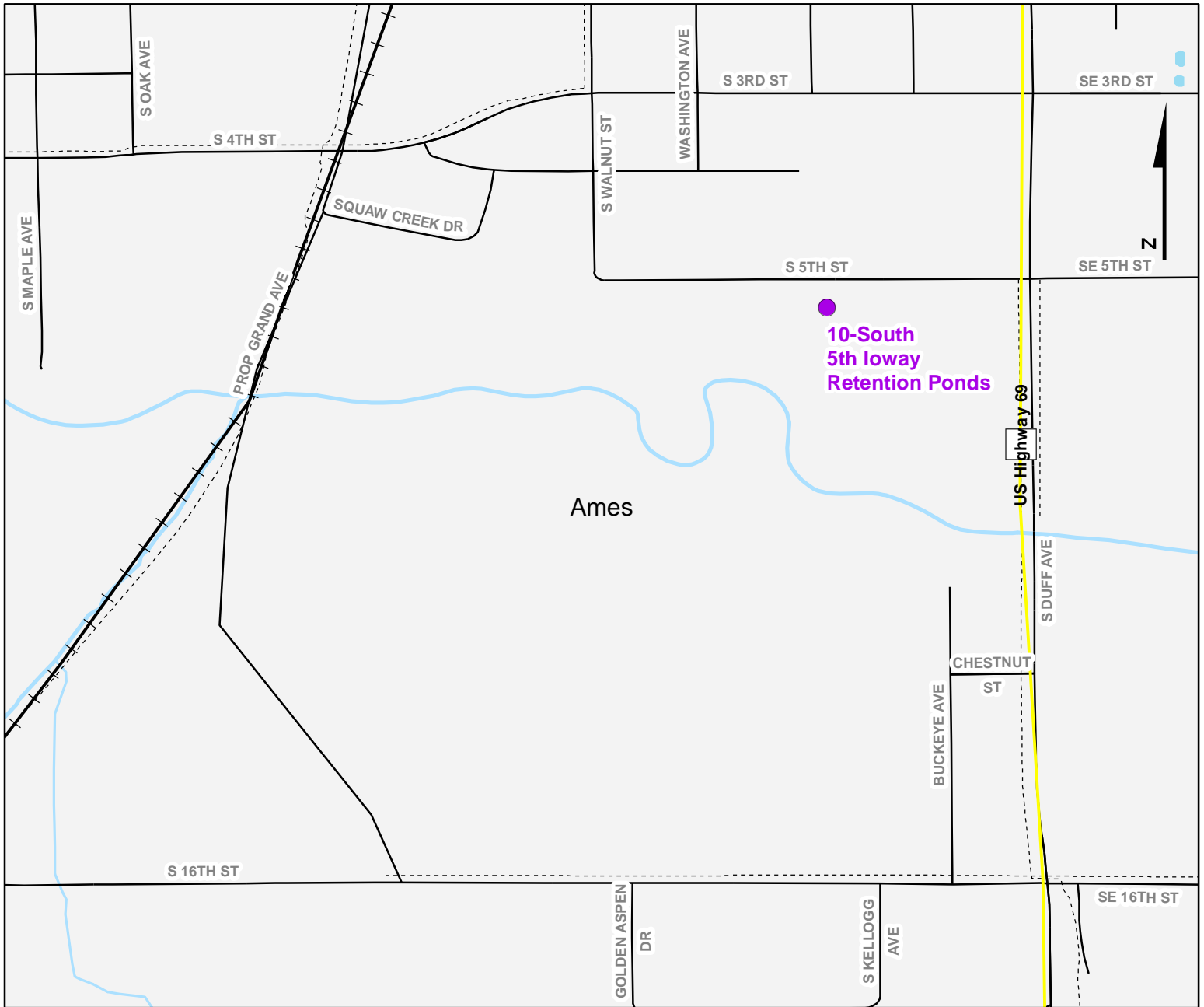
- Trails
- Survey Stops



Volunteer Wildlife Monitoring Program (VWMP) Frog and Toad Survey



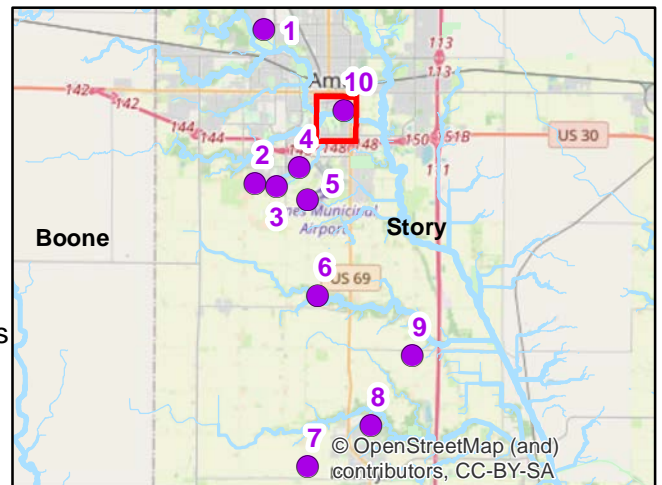
Route ID: 126 County: Story



DNR
Volunteer Wildlife Monitoring Program

Legend

- Trails
- Survey Stops



VOLUNTEER WILDLIFE MONITORING PROGRAM

Survey Route Description

Route 126

Name

Address

Phone

E-mail

Site No	Site Name	County	T	R	S	Q	Latitude	Longitude	Wetland Type
1	Pinehurst Drive Buck Pond	Story	84N	24W	33		42.0440440	-93.6497350	Permanent Open Water
	Description:	Urban pond, drainage from Moore Park Pond							
2	Red Fox Ringgenberg Pond	Story	83N	24W	21		41.9921340	-93.6531920	Hab Type Not recorded
3	Ansley Ames Burgason Pond	Story	83N	24W	21		41.9910990	-93.6433700	Hab Type Not recorded
4	TELC Ponds South Loop	Story	83N	24W	15		41.9977830	-93.6334180	Hab Type Not recorded
	Description:	Spot temporarily picked							
5	South Riverside Drive Ames Airport Pond	Story	83N	24W	22		41.9867120	-93.6294520	Hab Type Not recorded
6	Timber Road Pond and Walnut Creek	Story	83N	24W	34	SE	41.9543650	-93.6245100	Permanent Open Water
	Description:	Pond on North side of gravel road, east of Creek bridge-gravel entrance							
7	535 Ballard Prairie Pothole	Story	82N	24W	22	SE	41.8966880	-93.6284720	Cattail Marsh
	Description:	Farmed/grabby wet pothole area at old farmstead site w/ metal bin; east side							
8	Deer Drive Pond Huxley	Story	82N	24W	13		41.9105930	-93.6000920	Hab Type Not recorded
9	Four Corners Prairie Pond	Story	82N	24W	12	NE	41.9345380	-93.5815950	Permanent Open Water
	Description:	Pond on West side of gravel, farm pond w/ wetland vegetation in places							
10	South 5th loway Retention Ponds	Story	83N	24W	11		42.0169830	-93.6133880	Hab Type Not recorded