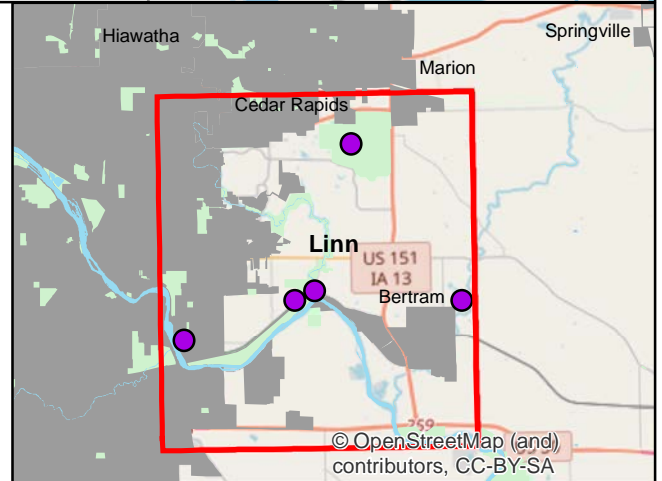
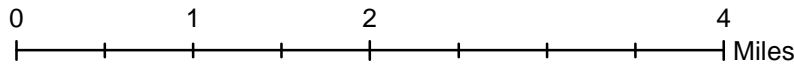
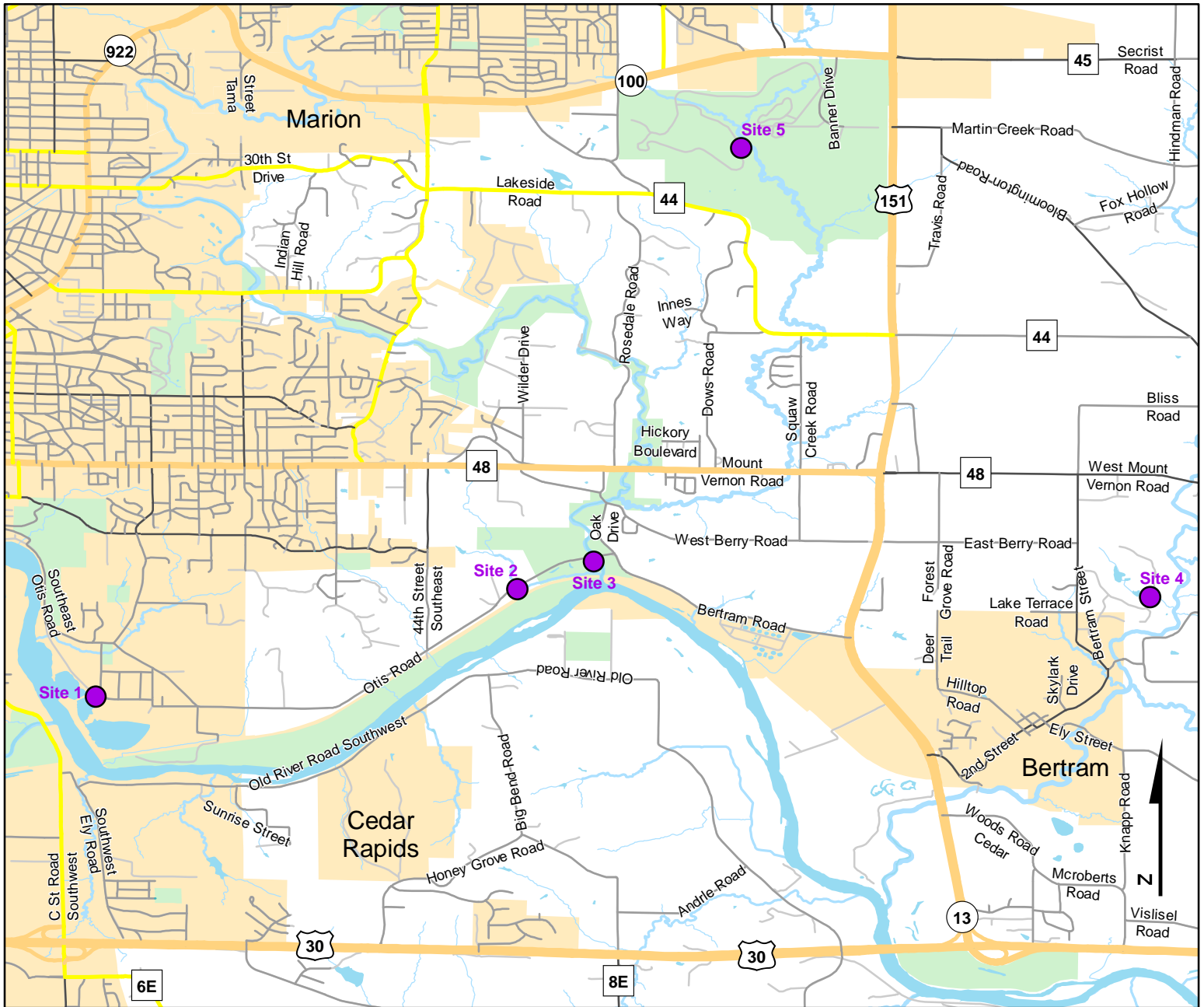




# Volunteer Wildlife Monitoring Program (VWMP) Frog and Toad Survey

Route ID: 281 County: Linn

Click for Google Maps to Site 1: <https://www.google.com/maps/dir/?api=1&destination=41.9603598576,-91.6390509769>

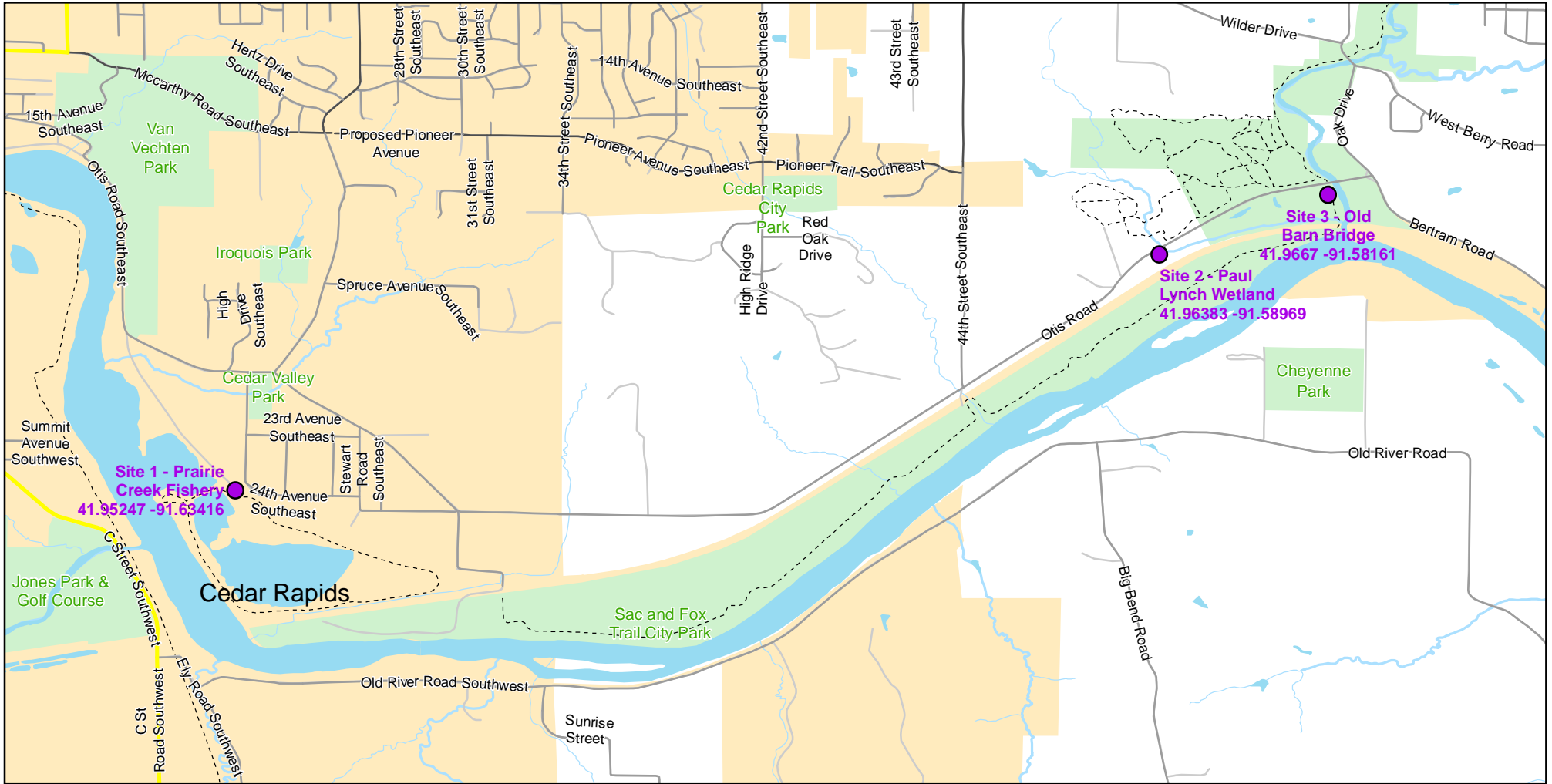




# Volunteer Wildlife Monitoring Program (VWMP) Frog

Route ID: 281 County: Linn

Click for Google Maps to Site 1: <https://www.google.com/maps/dir/?api=1&destination=41.9603598576,-91.6390509769>

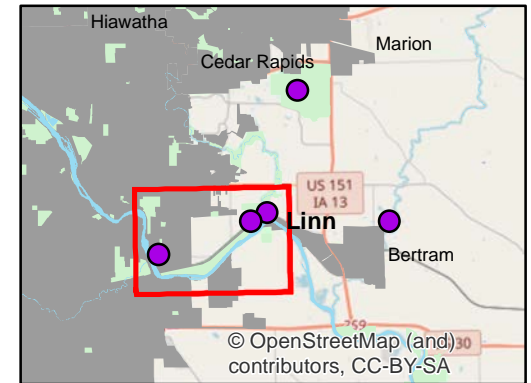
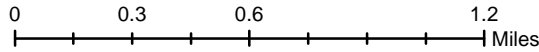


Enlarged View of Site 1



## Legend

----- Trails

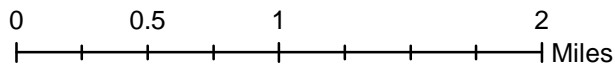
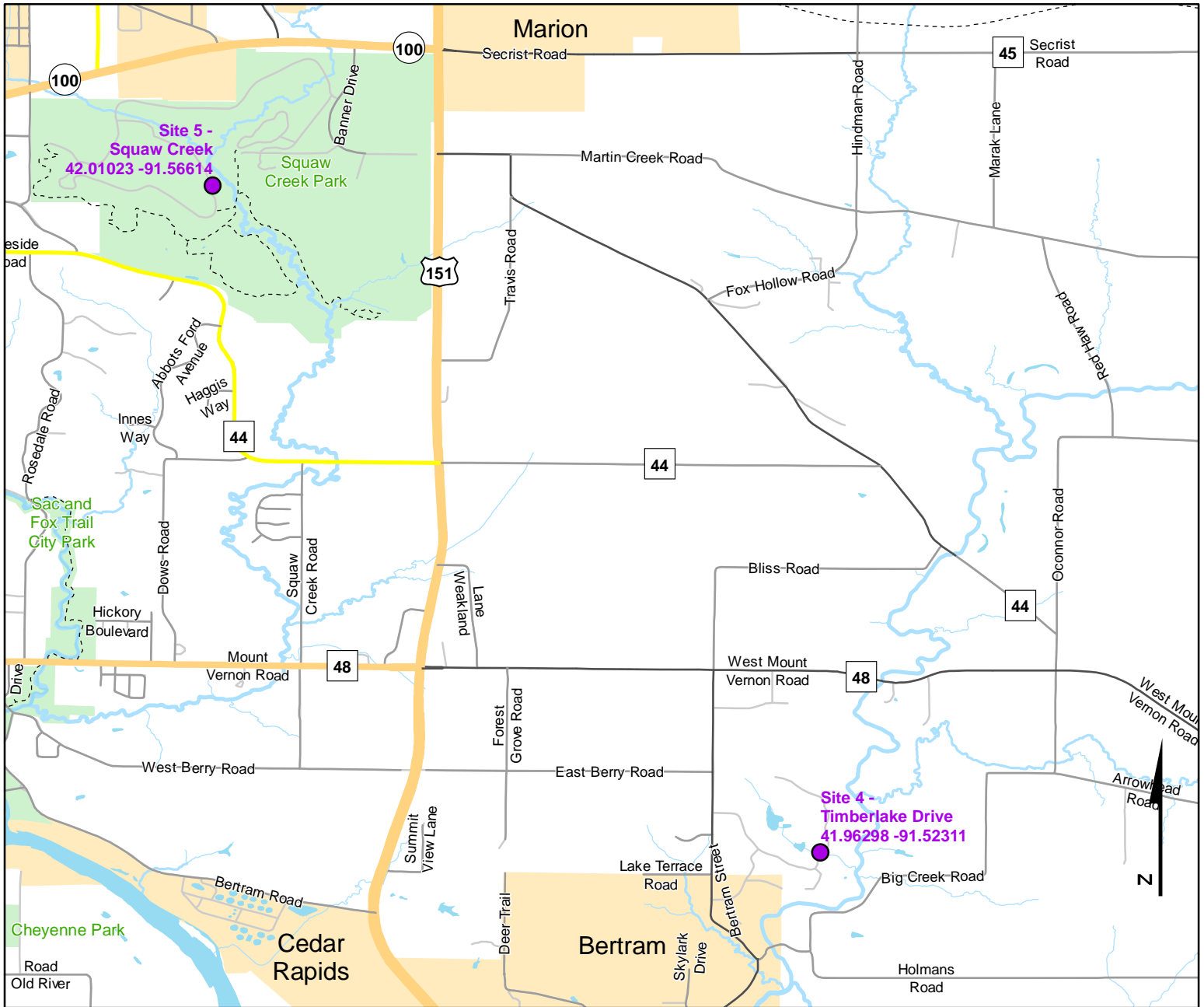




# Volunteer Wildlife Monitoring Program (VWMP) Frog and Toad Survey

Route ID: 281 County: Linn

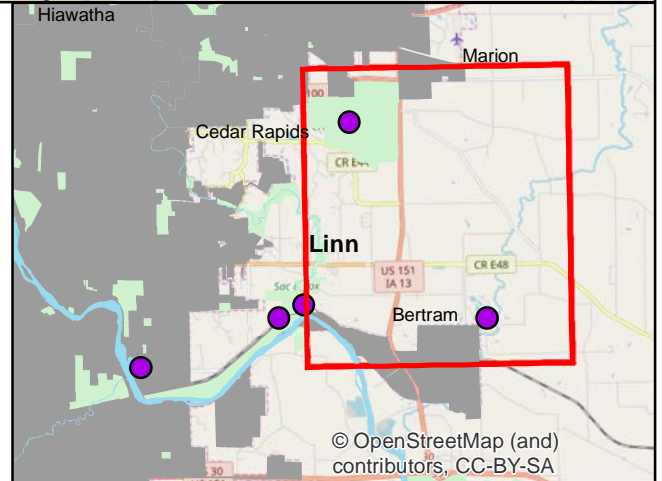
Click for Google Maps to Site 1: <https://www.google.com/maps/dir/?api=1&destination=41.9603598576,-91.6390509769>



**Volunteer Wildlife Monitoring Program**

## Legend

----- Trails



© OpenStreetMap (and contributors), CC-BY-SA



# Frog and Toad Call Survey Route Description

Route ID **281**

Established: 2017

Site Number	Name	County	Latitude	Longitude	Directions
1	Prairie Creek Fishery	Linn	41.9603599	-91.639051	Along the Cedar River, just north of fishery
2	Paul Lynch Wetland	Linn	41.9638285	-91.589689	half mile west of the Nature Center barn along Otis Road.
3	Old Barn Bridge	Linn	41.9667011	-91.5816124	Just west of Indian Creek - Cedar River flood plain
4	Timberlake Drive	Linn	41.9629822	-91.5231081	"new" neighborhood development. Multiple ponds along Timberlake Dr.
5	Squaw Creek	Linn	42.0102312	-91.5661374	Not the pond area, but up the road near Squaw Creek