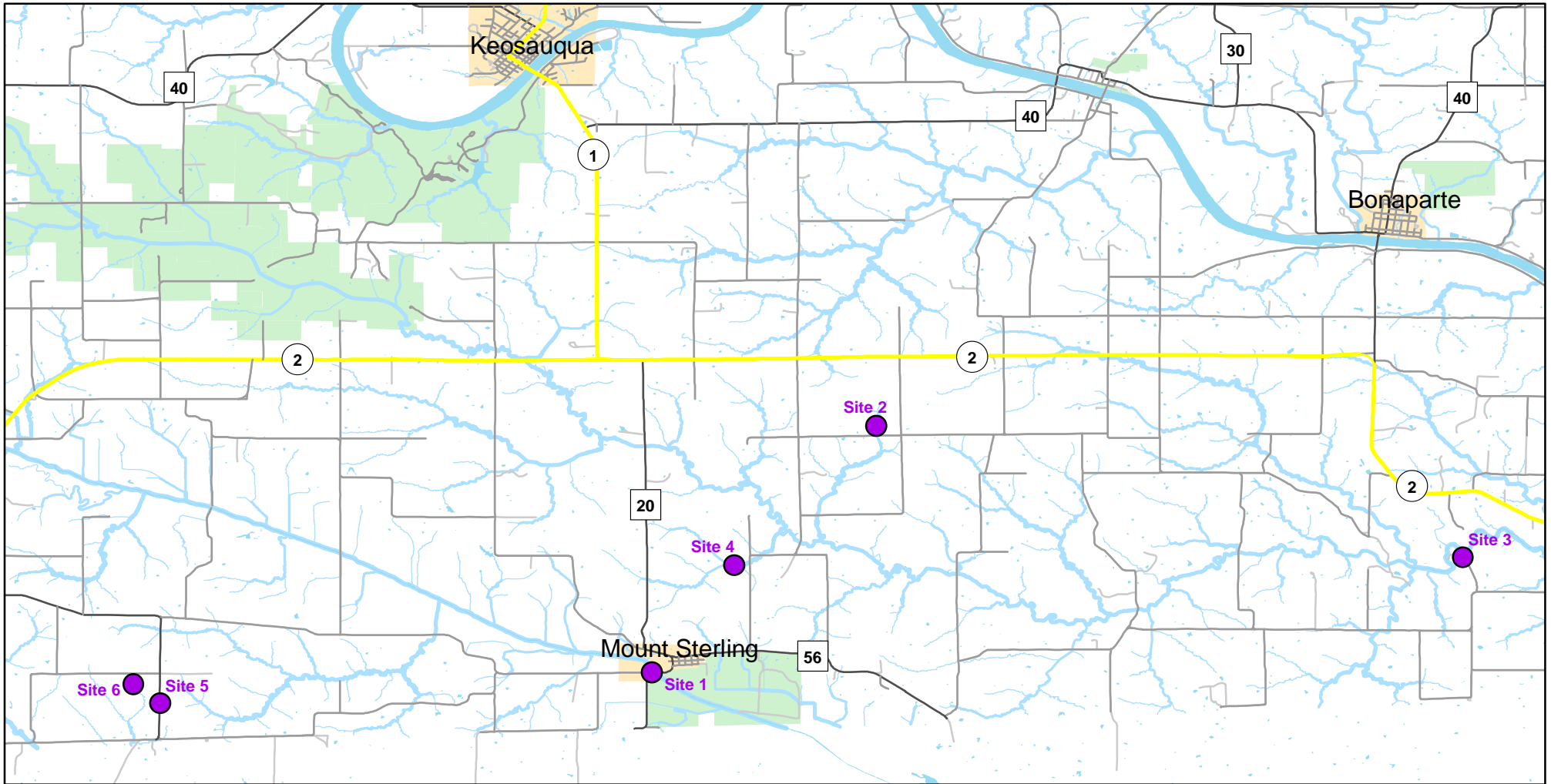




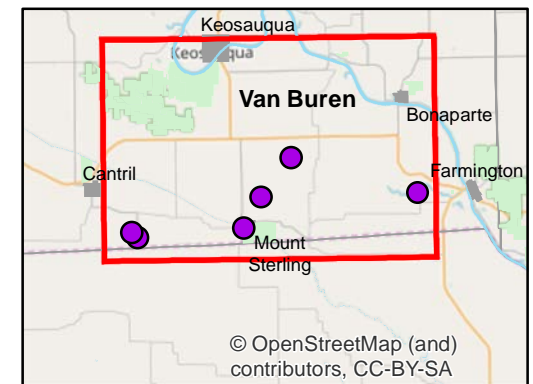
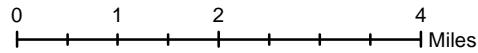
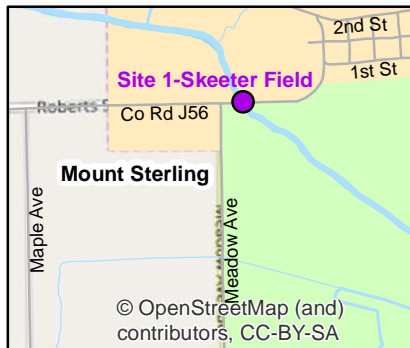
Volunteer Wildlife Monitoring Program (VWMP) Frog

Route ID: 162 County: Van Buren

Click for Google Maps to Site 1: <https://www.google.com/maps/dir/?api=1&destination=40.6161833264,-91.9381976827>



Enlarged View of Site 1

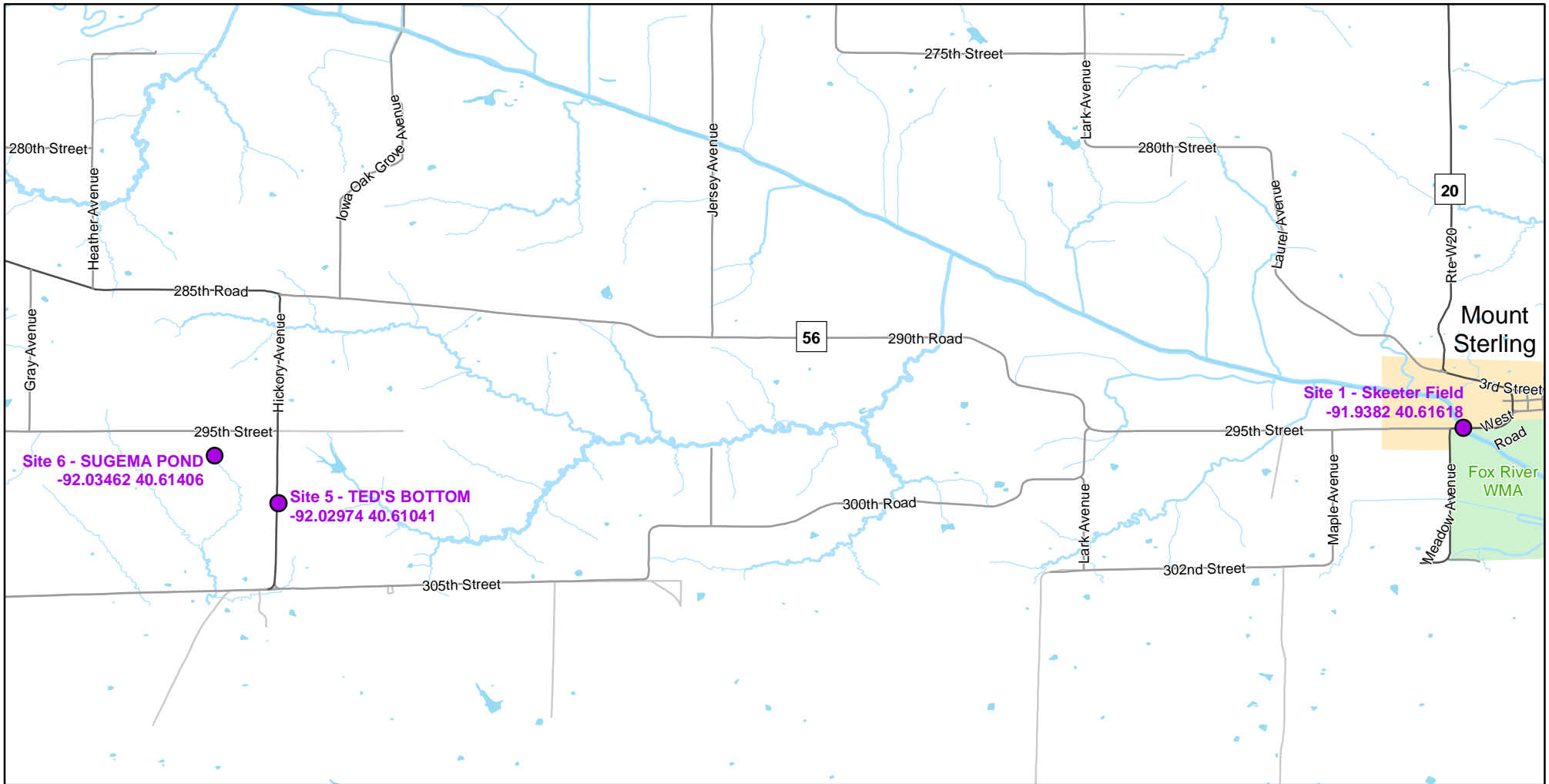




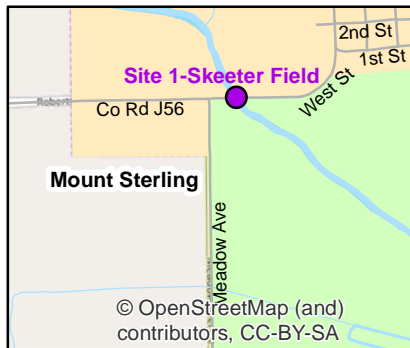
Volunteer Wildlife Monitoring Program (VWMP) Frog

Route ID: 162 County: Van Buren

Click for Google Maps to Site 1: <https://www.google.com/maps/dir/?api=1&destination=40.6161833264,-91.9381976827>

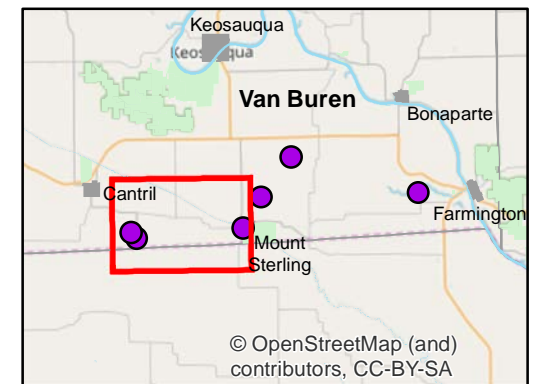
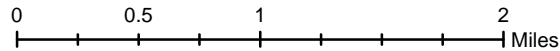


Enlarged View of Site 1



Legend

----- Trails



© OpenStreetMap (and) contributors, CC-BY-SA

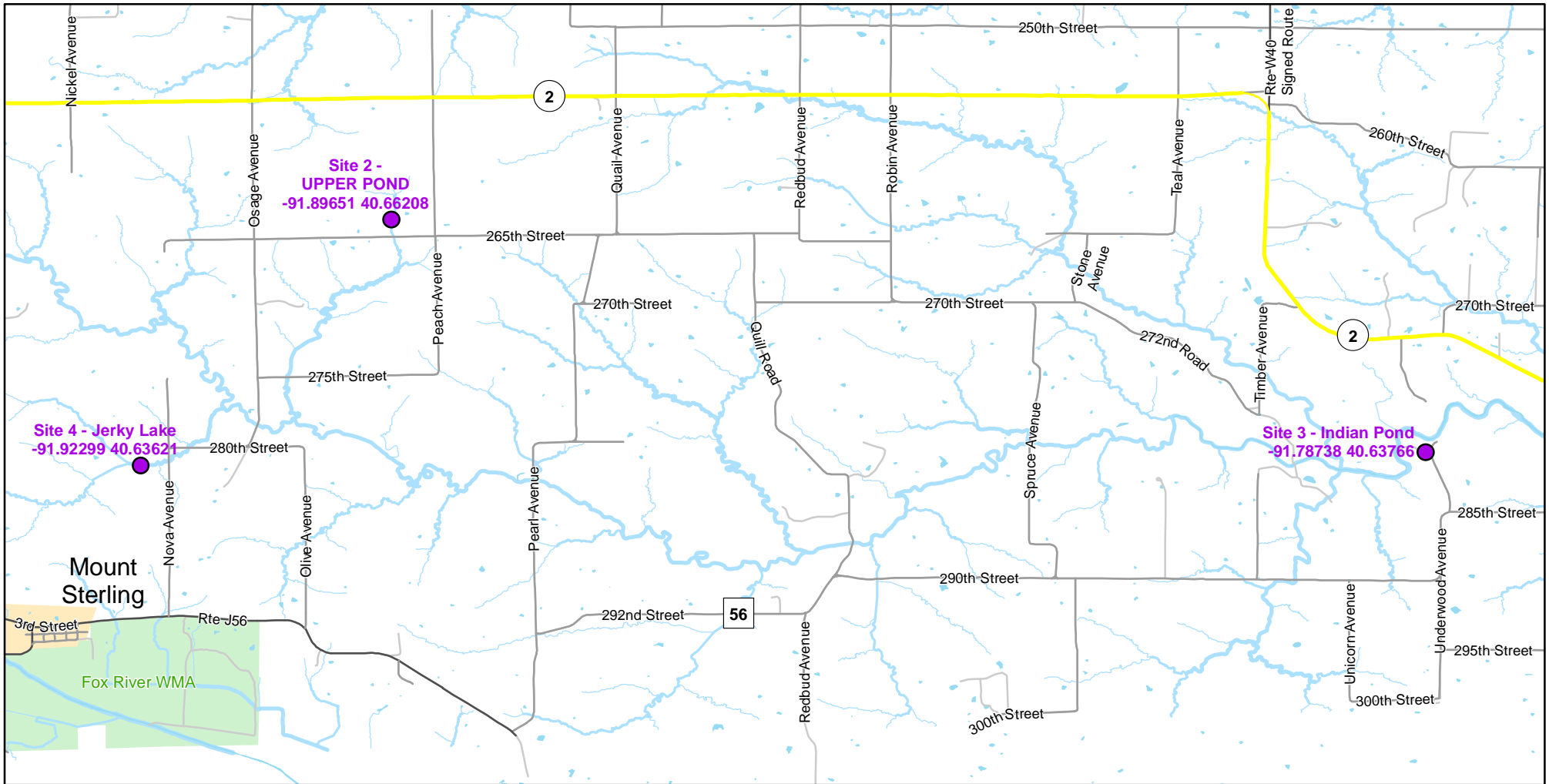
© OpenStreetMap (and) contributors, CC-BY-SA



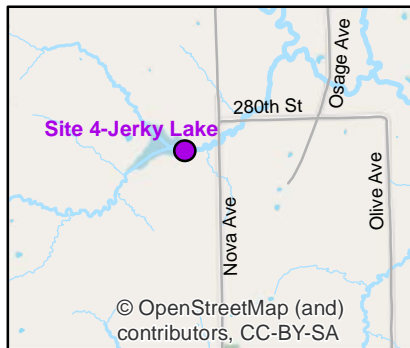
Volunteer Wildlife Monitoring Program (VWMP) Frog

Route ID: 162 County: Van Buren

Click for Google Maps to Site 1: <https://www.google.com/maps/dir/?api=1&destination=40.6161833264,-91.9381976827>

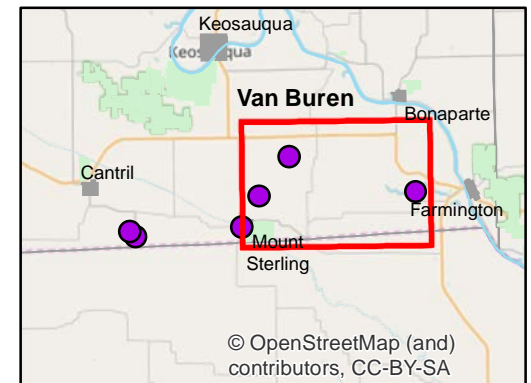
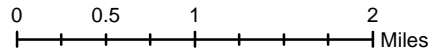


Enlarged View of Site 4



Legend

----- Trails





Frog and Toad Call Survey Route Description

Route ID **162**

Established: 1995

Site Number	Name	County	Latitude	Longitude	Directions
1	SKEETER FIELD	Van Buren	40.6105737	-91.9434078	
2	UPPER POND	Van Buren	40.6620852	-91.8965122	
3	INDIAN POND	Van Buren	40.6294318	-91.7856822	
4	JERKY LAKE	Van Buren	40.6325791	-91.9245879	
5	TED'S BOTTOM	Van Buren	40.6104078	-92.0297346	
6	SUGEMA POND	Van Buren	40.6140568	-92.0346232	First left past Ivy Ford then first right to end . Mixed field and wood bordered - 18 acre lake