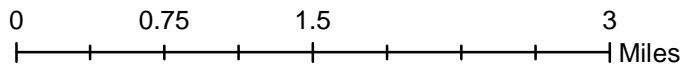
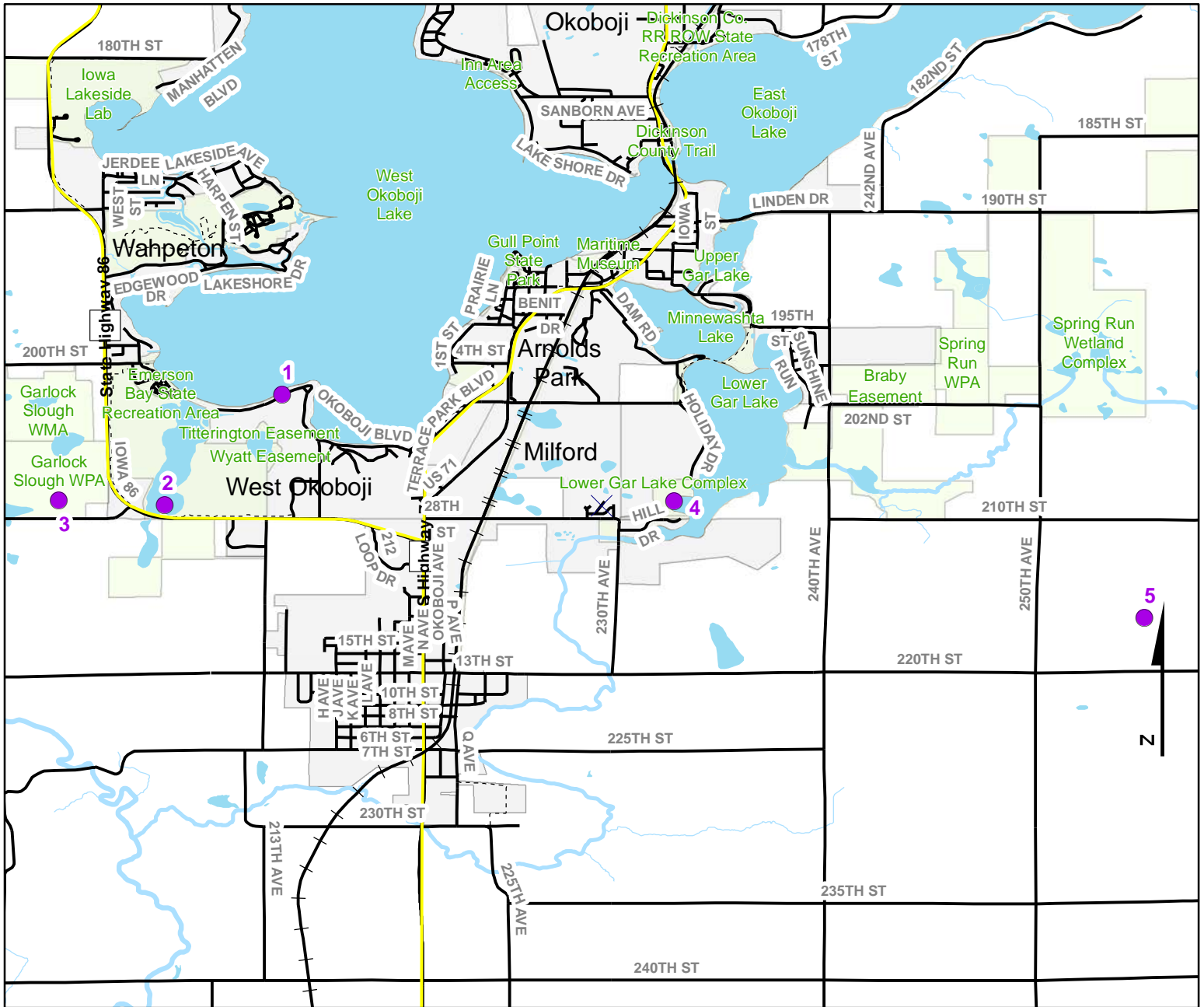


Volunteer Wildlife Monitoring Program (VWMP) Frog and Toad Survey

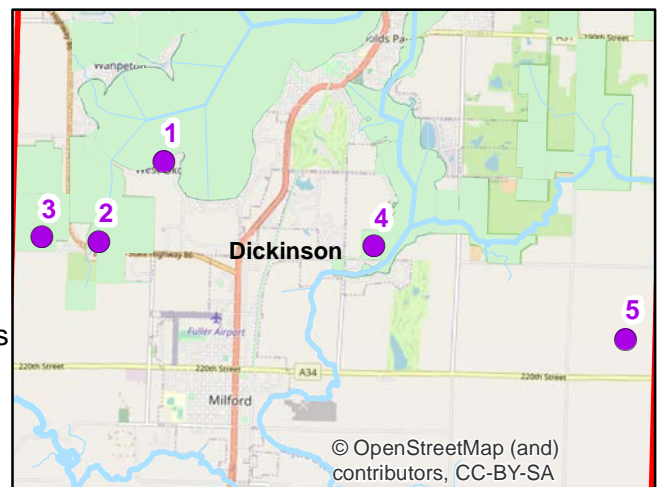


Route ID: 179 County: Dickinson



Volunteer Wildlife Monitoring Program

Legend
 - - - - Trails
 ● Survey Stops

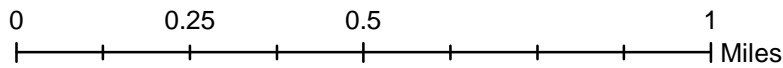


© OpenStreetMap (and contributors, CC-BY-SA)

Volunteer Wildlife Monitoring Program (VWMP) Frog and Toad Survey

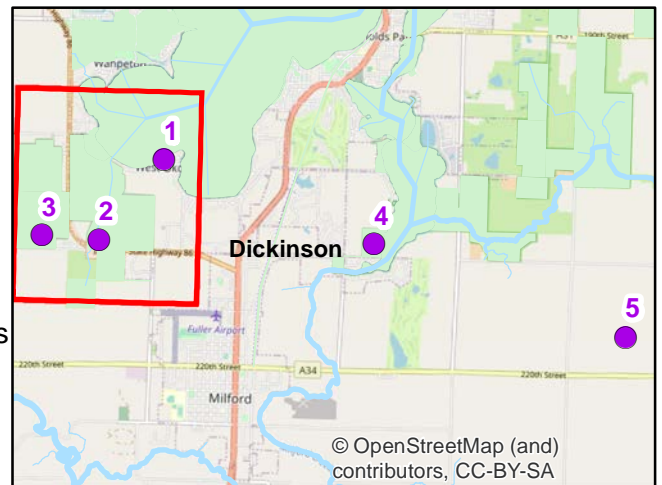


Route ID: 179 County: Dickinson



Legend

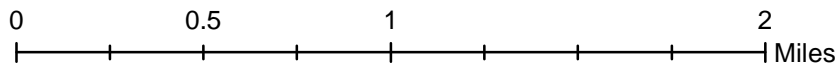
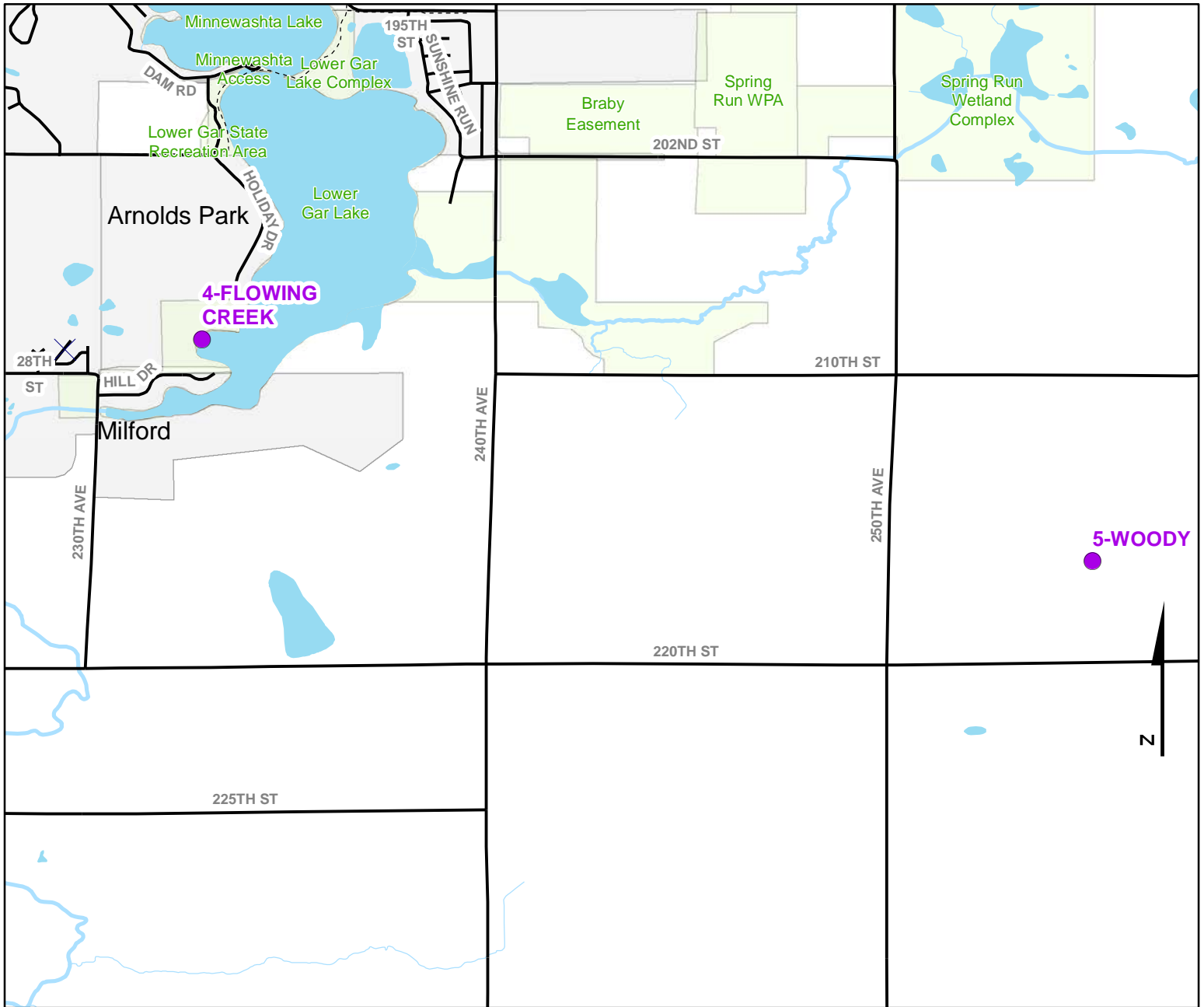
- Trails
- Survey Stops



Volunteer Wildlife Monitoring Program (VWMP) Frog and Toad Survey



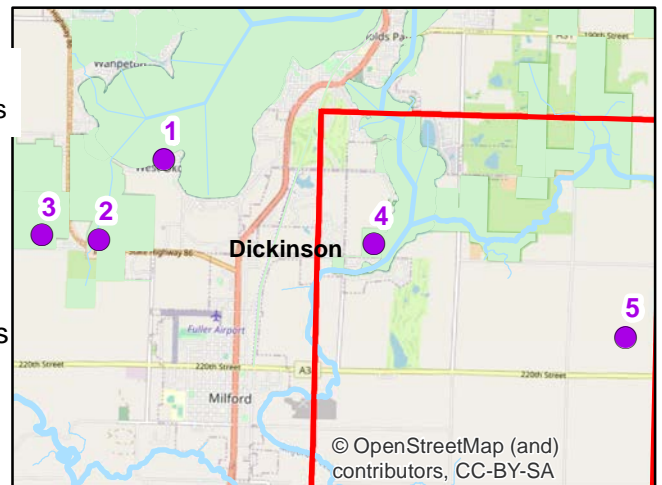
Route ID: 179 County: Dickinson



Volunteer Wildlife Monitoring Program

Legend

- Trails
- Survey Stops



© OpenStreetMap (and contributors), CC-BY-SA

VOLUNTEER WILDLIFE MONITORING PROGRAM

Survey Route Description

Route 179

Name

Address

Phone

E-mail

Site No	Site Name	County	T	R	S	Q	Latitude	Longitude	Wetland Type
1	Jones Beach	Dickinson	99N	37W	36	NW	43.3541725	-95.1633451	Ephemeral Flooded Area
	Description:	Entrance Jones Beach							
2	Garlock Slough	Dickinson	99N	37W	35	SE	43.3437433	-95.1743865	Permanent Open Water
	Description:	Not sure where exact listening point was. Listed as Garlock Slough.							
3	FARM POND	Dickinson	99N	37W	35	SW	43.3441943	-95.1843803	Cattail Marsh
4	FLOWING CREEK	Dickinson	99N	36W	32	SW	43.3441518	-95.1264585	Open Riverine
6	WOODY	Dickinson	98N	36W	3		43.3331150	-95.0821852	Permanent Open Water