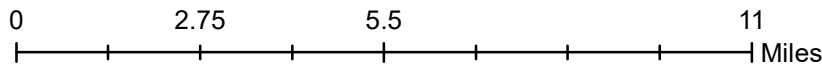
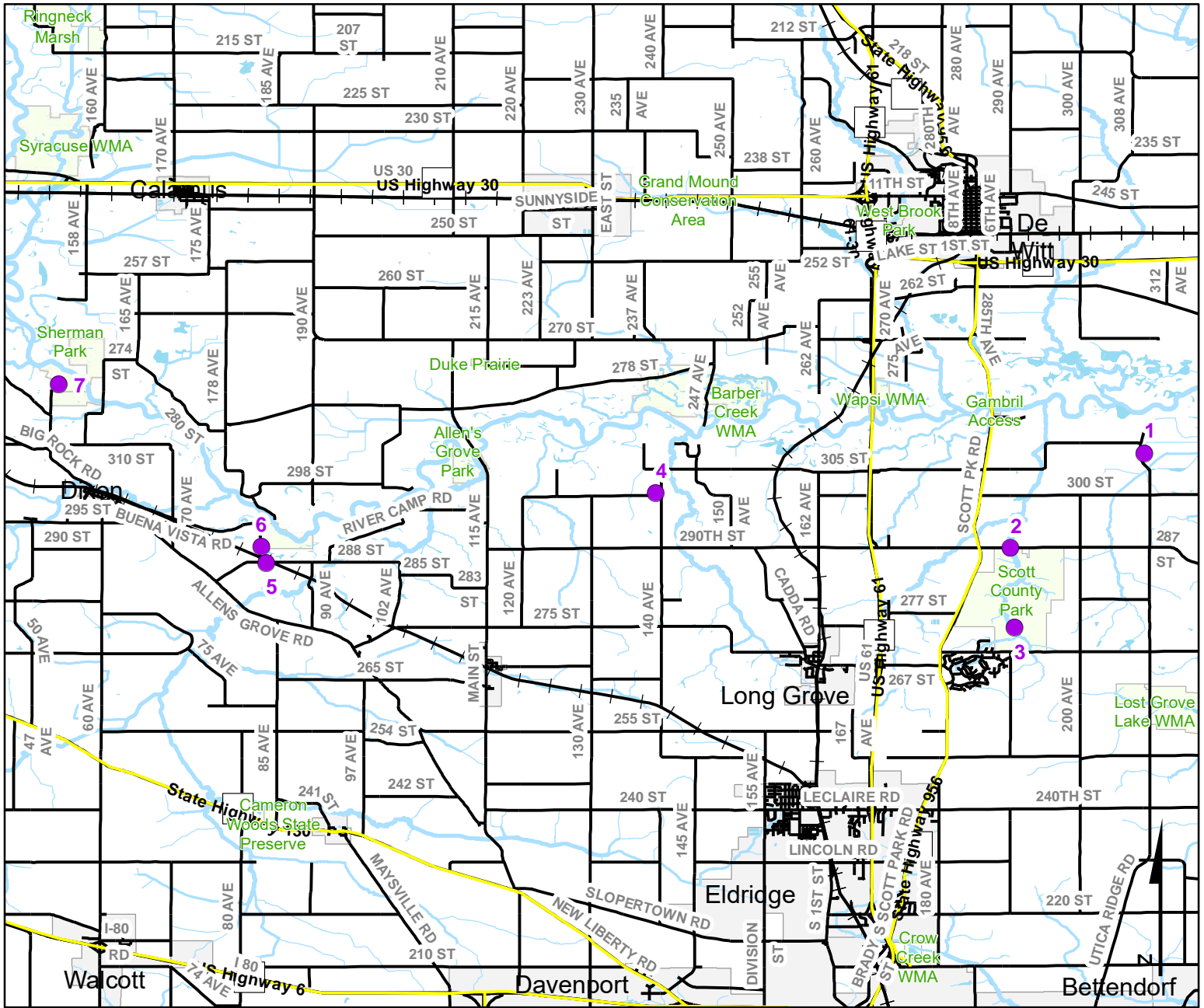


Volunteer Wildlife Monitoring Program (VWMP) Frog and Toad Survey

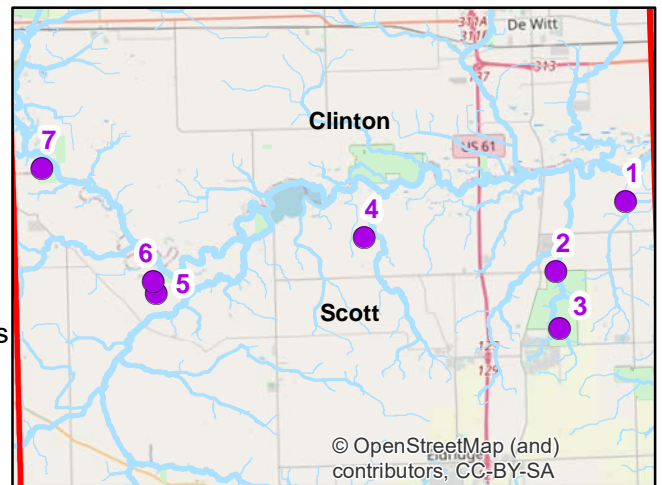


Route ID: 93 County: Scott



Legend

- Trails
- Survey Stops

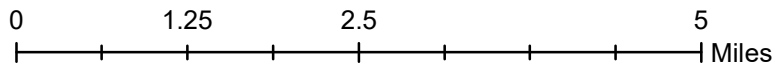
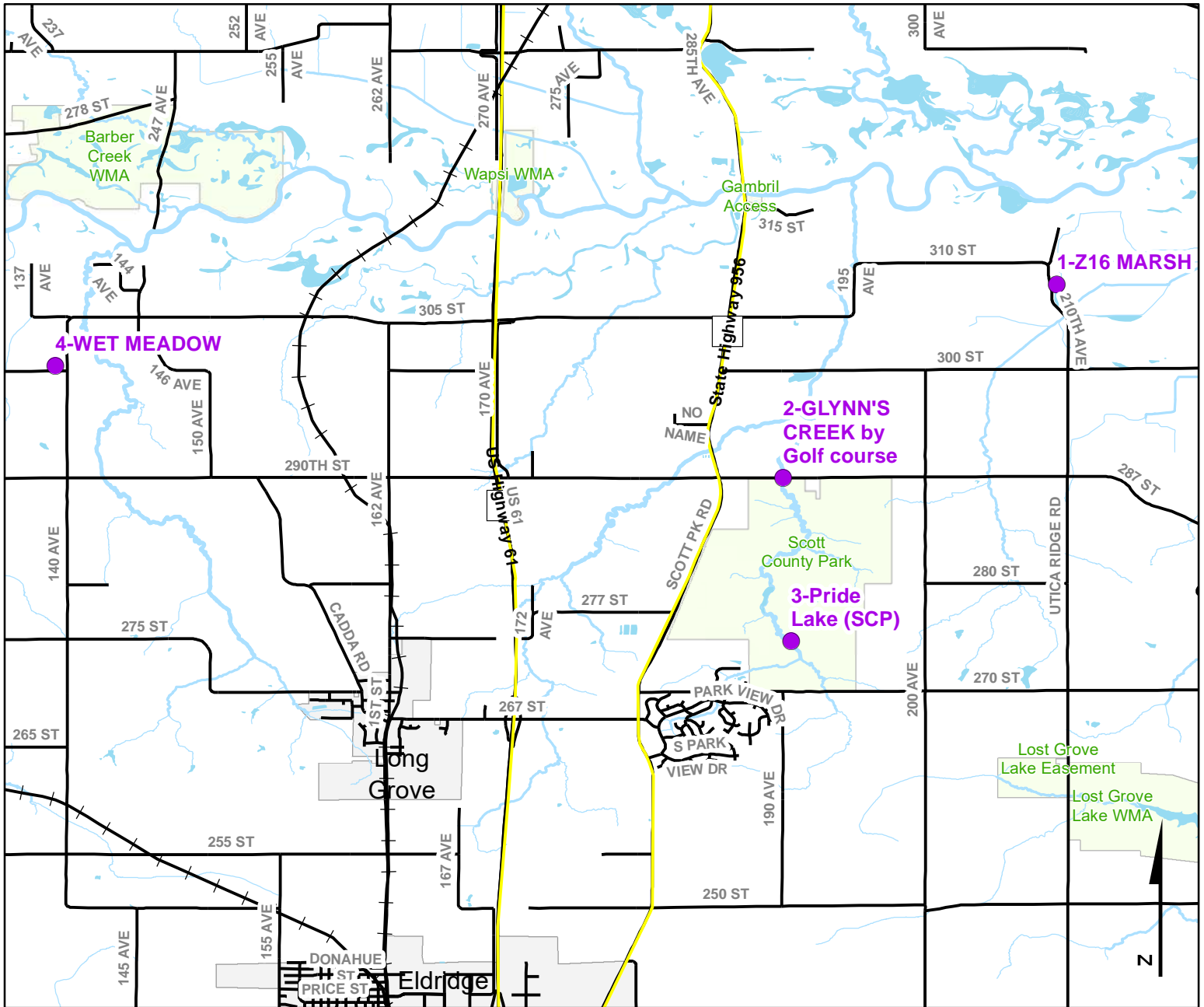


© OpenStreetMap (and contributors), CC-BY-SA

Volunteer Wildlife Monitoring Program (VWMP) Frog and Toad Survey



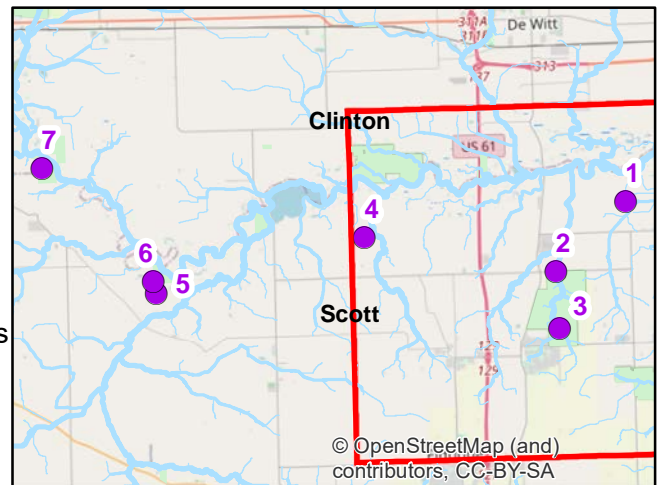
Route ID: 93 County: Scott



Volunteer Wildlife Monitoring Program

Legend

- Trails
- Survey Stops

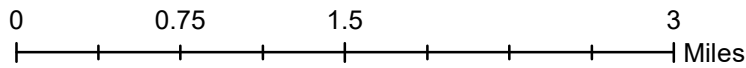
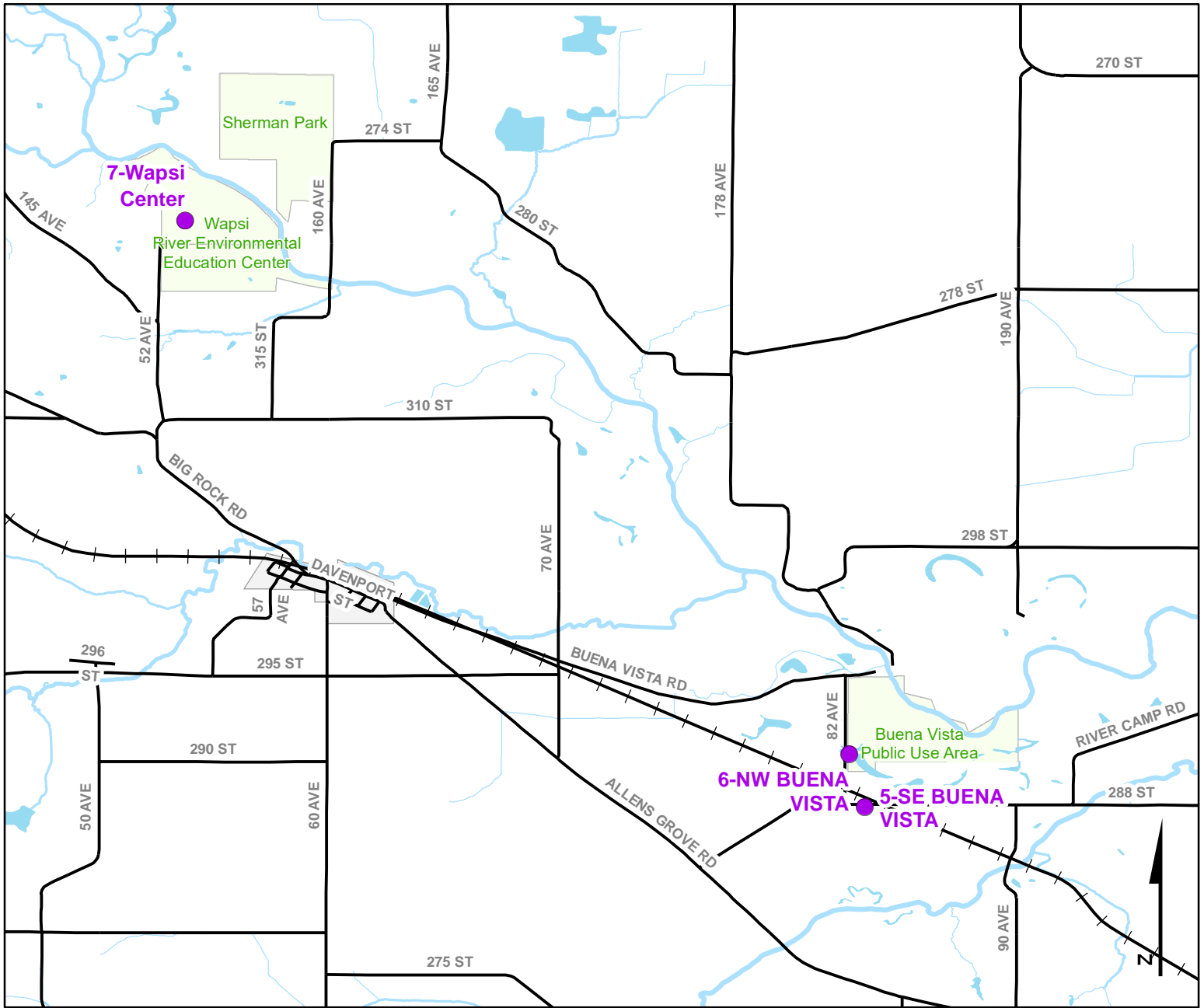


© OpenStreetMap (and) contributors, CC-BY-SA

Volunteer Wildlife Monitoring Program (VWMP) Frog and Toad Survey



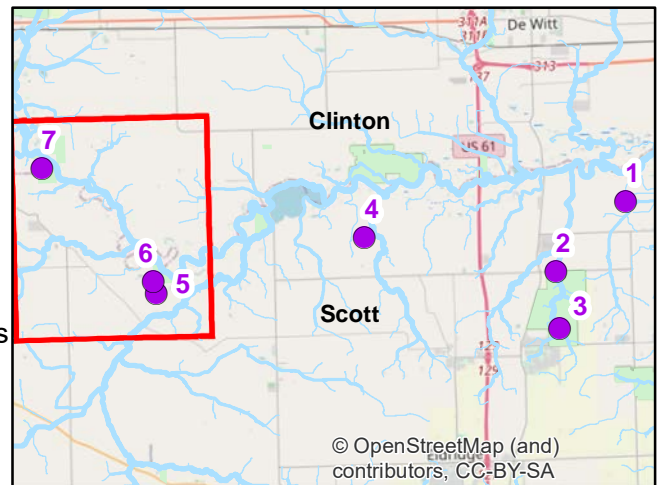
Route ID: 93 County: Scott



DNR
Volunteer
Wildlife
Monitoring
Program

Legend

- Trails
- Survey Stops



VOLUNTEER WILDLIFE MONITORING PROGRAM

Survey Route Description

Route 93

Name Rebecca Baugh

Address 319 E. Laurretta St.

Phone

E-mail rebecca.baugh@scottcountyiowa.com

Site No	Site Name	County	T	R	S	Q	Latitude	Longitude	Wetland Type
1	Z16 MARSH	Scott	80N	4E	9	NE	41.7540784	-90.4922052	Cattail Marsh
2	GLYNN'S CREEK by Golf course	Scott	80N	04E	17	SW	41.7277309	-90.5293946	Timbered Riverine
	Description:	This is where Glynn's Creek intersects with Scott County Park at Pioneer Village.							
3	WET MEADOW	Scott	80N	3E	8	SE	41.7429642	-90.6282460	Wet-Meadow
4	SE BUENA VISTA	Scott	80N	2E	21	NW	41.7235565	-90.7367347	Shrub Marsh
5	NW BUENA VISTA	Scott	80N	2E	16	SW	41.7280409	-90.7380681	Ephemeral Flooded Area
6	Wapsi Center	Scott	81N	01E	36	SW	41.7733487	-90.7944480	Ephemeral Flooded Area
	Description:	This is the ephemeral pond at the Wapsi River Center.							
7	Pride Lake (SCP)	Scott	80N	04E	29		41.7055590	-90.5283110	Permanent Open Water
	Description:	Pride Lake at Scott County Park.							