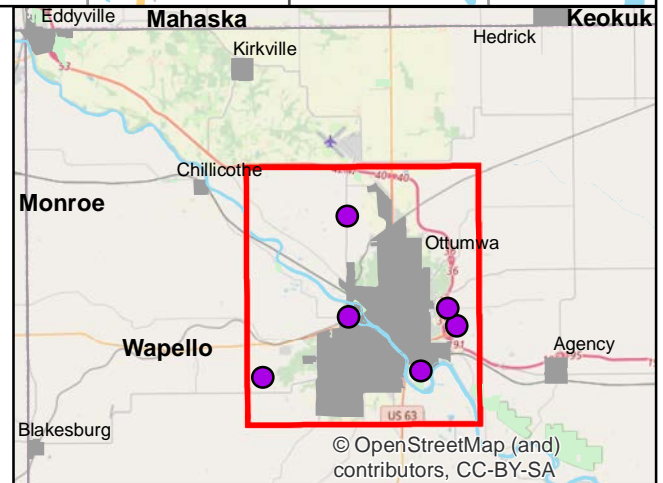
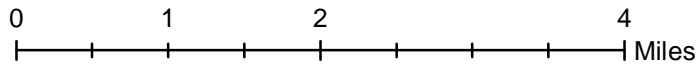
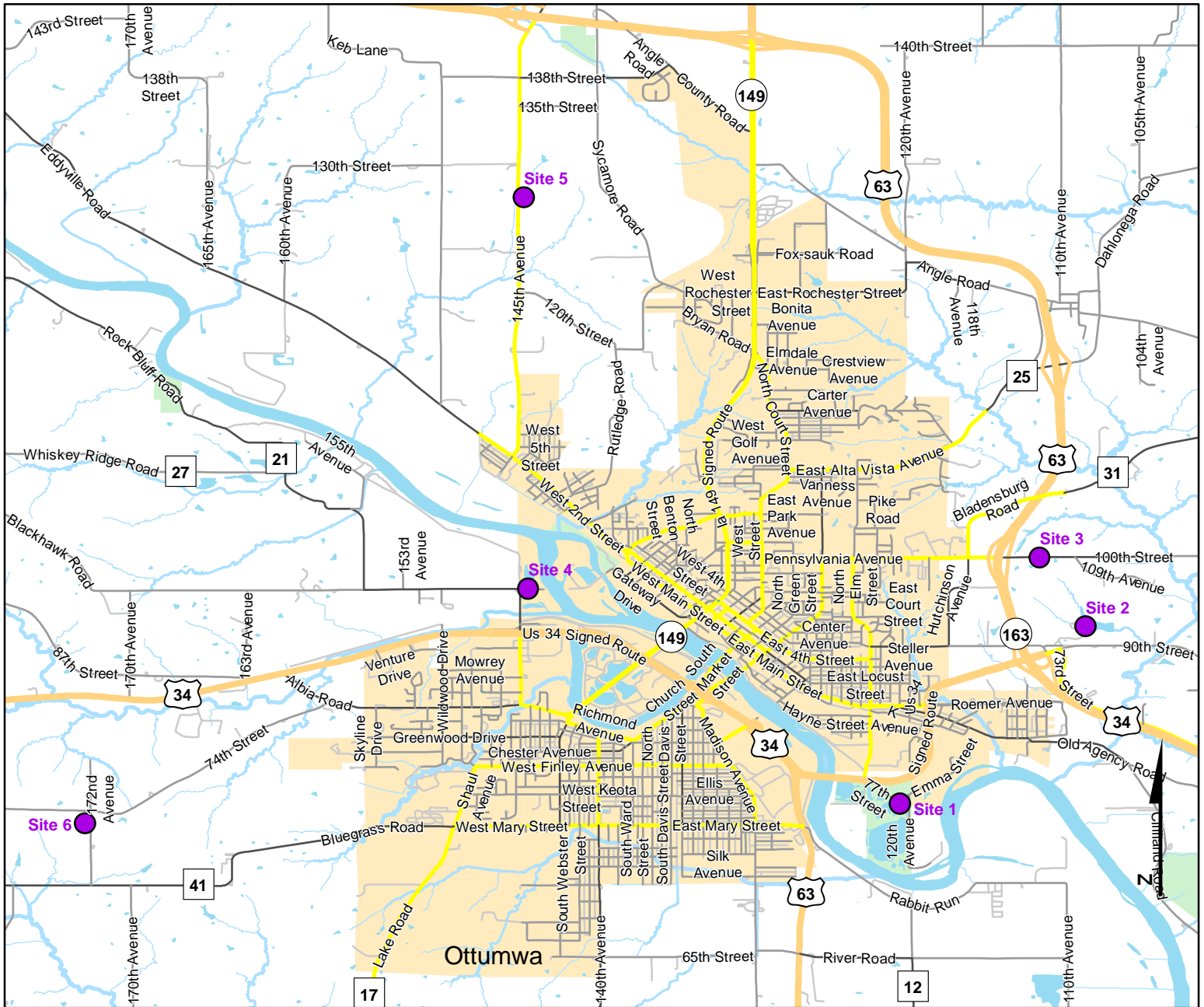




Volunteer Wildlife Monitoring Program (VWMP) Frog and Toad Survey

Route ID: 76 County: Wapello

Click for Google Maps to Site 1: <https://www.google.com/maps/dir/?api=1&destination=40.9974230674,-92.3919864228>



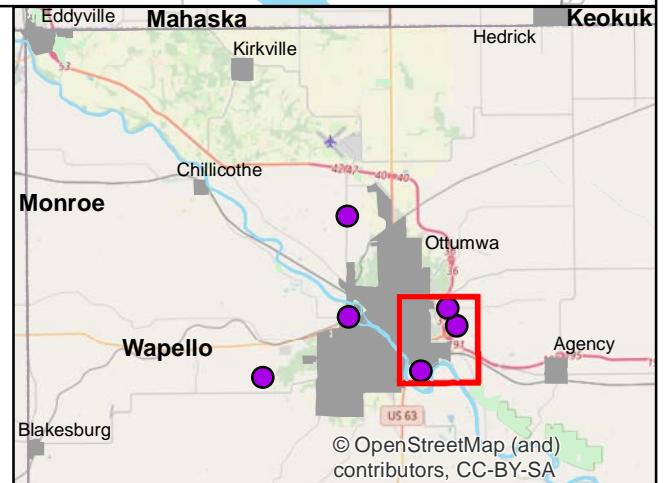
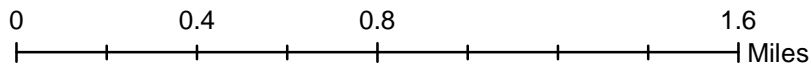
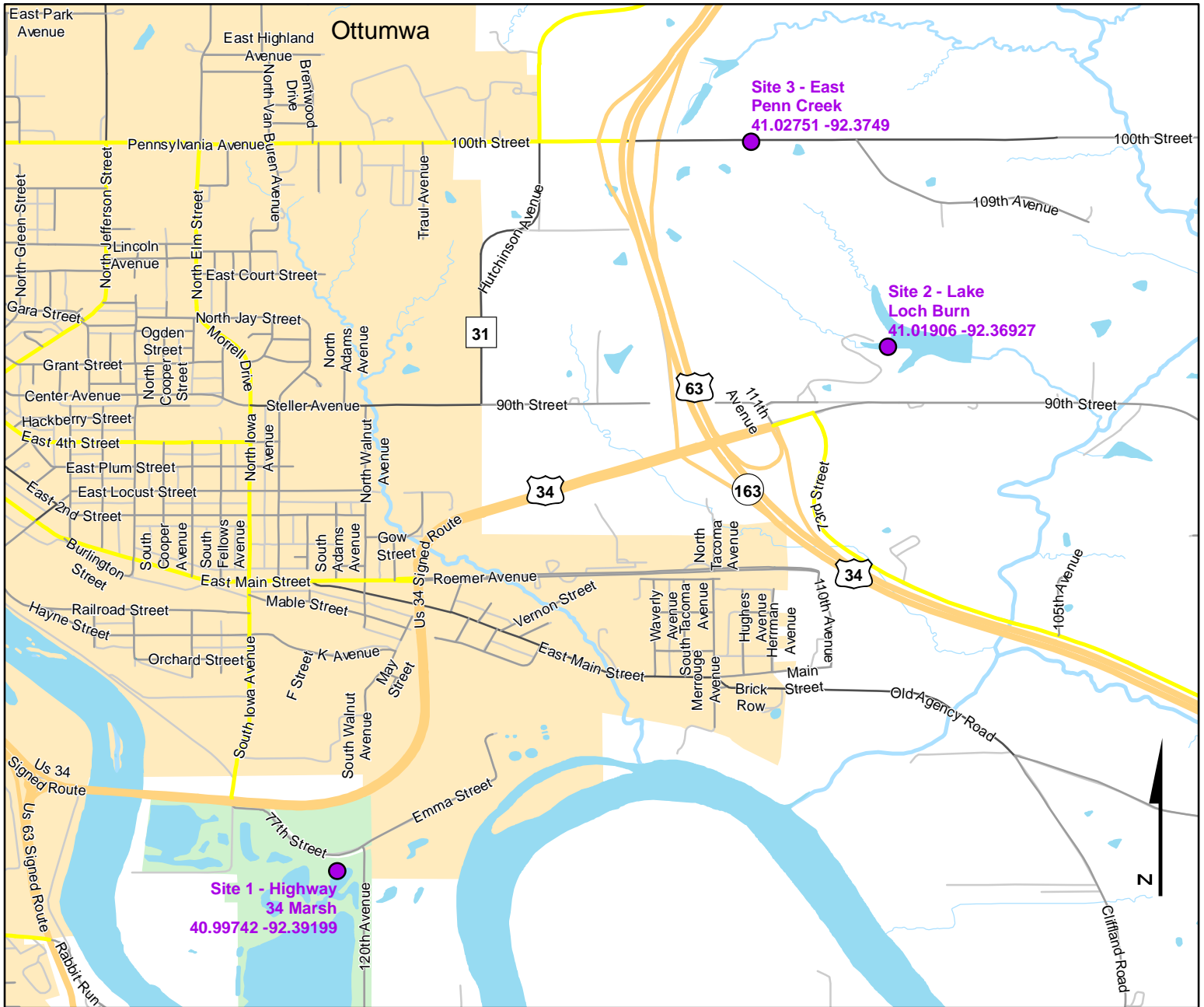
Questions? Contact the VWMP Coordinator at wmp@dnr.iowa.gov. Created on: 2/7/2020



Volunteer Wildlife Monitoring Program (VWMP) Frog and Toad Survey

Route ID: 76 County: Wapello

Click for Google Maps to Site 1: <https://www.google.com/maps/dir/?api=1&destination=40.9974230674,-92.3919864228>



© OpenStreetMap (and contributors), CC-BY-SA

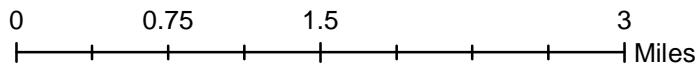
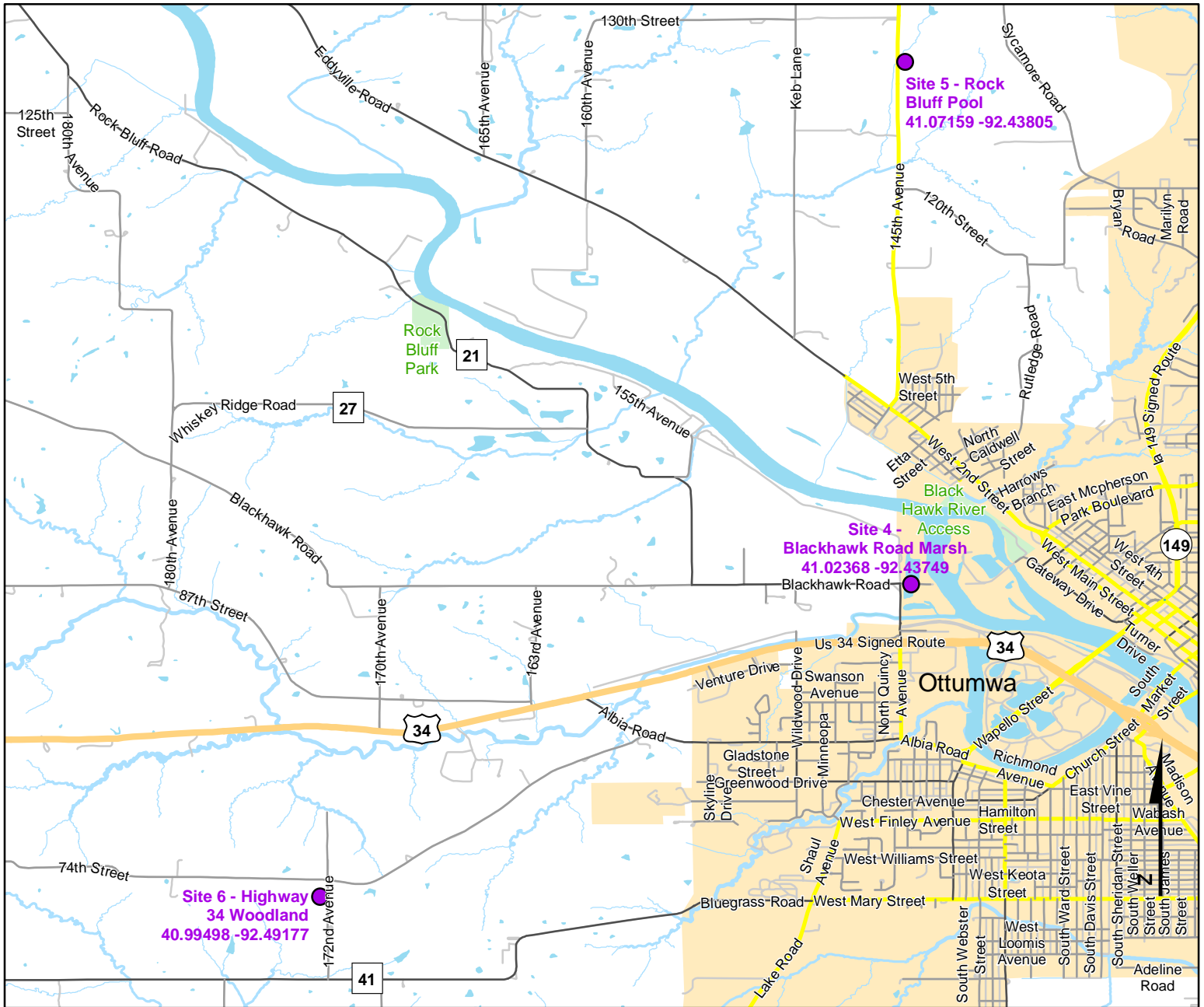
Questions? Contact the VWMP Coordinator at wmp@dnr.iowa.gov. Created on: 2/7/2020



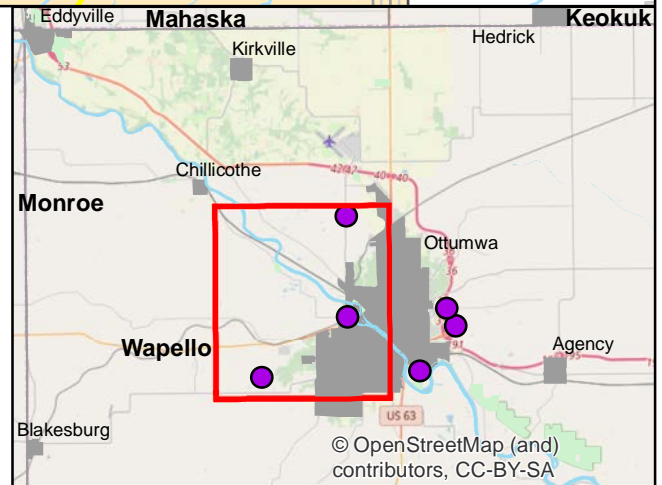
Volunteer Wildlife Monitoring Program (VWMP) Frog and Toad Survey

Route ID: 76 County: Wapello

Click for Google Maps to Site 1: <https://www.google.com/maps/dir/?api=1&destination=40.9974230674,-92.3919864228>



DNR
Volunteer Wildlife Monitoring Program





Frog and Toad Call Survey Route Description

Route ID **76**

Established: 1992

Site Number	Name	County	Latitude	Longitude	Directions
1	Highway 34 Marsh	Wapello	40.9974231	-92.3919864	200 yards south of Hwy 34 between 2 river access roads.
2	Lake Loch Burn	Wapello	41.0190557	-92.3692727	Just south of E. Pennsylvania
3	East Penn Creek	Wapello	41.027509	-92.3749018	3/4 mile east of Bladensburg and Pennsylvania junction, in a small valley. Narrow creek bordered by timber
4	Blackhawk Road Marsh	Wapello	41.0236787	-92.4374915	Between RR tracks and river next to blackhawk road.
5	Rock Bluff Pool	Wapello	41.0715865	-92.4380475	Pond south of intersection of 130th St and 145th Ave, just east off of 145th Ave.
6	Highway 34 Woodland	Wapello	40.9949785	-92.4917729	300 yards south of Highway 34 on right side of road.